

 **ANCHOR**

by **Panasonic**

**PENTA**

**AN  
INTEGRAL  
PART OF  
EVERY  
FAMILY.**

**INDIA'S LARGEST SELLING SWITCH**



**PRICELIST: APRIL 2020**

**PENTA PC**

**PENTA DELUXE, 240V~ 50Hz**



Code	Code	Code	Description	HSN	MRP	PKG
White	Ivory	Dark Brown				
14111	-	-	6A, 1 Way Switch	8536	18	30
14112	-	-	6A, 2 Way Switch	8536	34	30
14113	-	-	6A, Bell Push Switch	8536	34	30
14125	-	-	6A, 1Way Switch Urea Back piece(IP20)	8536	18	30



14111/14125 14112 14113

**PENTA CHERRY, 240V~ 50Hz**



14121	-	-	6A, 1 Way Switch	8536	19	30
14122	-	-	6A, 2 Way Switch	8536	35	30
14123	-	-	6A, Bell Push Switch	8536	35	30
14126	-	-	6A, 1Way Switch Urea Back piece(IP20)	8536	19	30



14121/14126 14122 14123

**SOCKETS, 240V~ 50Hz**

14301	-	-	6A, 2 Pin Socket	8536	32	20
14312	-	-	6A, 2 Pin Socket Urea Backpiece (IP20)	8536	32	20
14302	-	-	6A, 3 Pin Socket	8536	42	10
14303	-	-	6A, Multi Socket For 2 & 3 Pin	8536	44	10
14305	-	-	6A/13A Combine Socket (For All Kind Of Pins)	8536	62	10
14119	-	-	6A, 2in1 Socket Urea Backpiece (IP20)	8536	34	20



14301 / 14312 14302 14303



14305 14119 Urea Back



**SUPPORT FUNCTION**

14309	-	-	USB Charger,1M,1000mA,5V DC	8536	657	10
14609	-	-	10A & 16A Kit Kat Fuse Flush	8536	56	10



14309 14609

**TELEPHONE JACK / NEON LAMP INDICATOR / COMPUTER JACK**

14601	-	-	Neon Indicator 240V~ 50Hz	8531	48	20
14602	-	-	Mini Tel. Jack With Shutter	8536	78	20
14603	-	-	Telephone Jack Double W/O Shutter	8536	99	10



14601 14602 14603

**TV ANTENNA OUTLET**

14606	-	-	T.V. Outlet Mini	8536	49	20
14607	-	-	T.V. Outlet Deluxe	8536	53	10



14606 14607

**FAN REGULATOR, 240V~ 50Hz**

Code	Code	Code	Description	HSN	MRP	PKG
White	Ivory	Dark Brown				
14501	-	-	100W,Mini Fan Regulator Rotary Step	8414	233	10
14502	-	-	100W,Deluxe Fan Regulator Rotary Step	8414	261	10



14501 14502

**DIMMER CONTROLLER, 240V~ 50Hz**

14503	-	-	450W, Mini Dimmer	8543	209	10
14504	-	-	450W, Delux Dimmer	8543	227	10



14503 14504

**POWER SWITCHES (2 FIXING HOLES), 240V~ 50Hz**



14401	-	-	20A, 1 Way Switch	8536	91	10
14402	-	-	20A, 2 Way Switch	8536	120	10
14404	-	-	32A DP Switch W/o Fuse With Neon	8536	187	10



14401 14402 14404

**POWER SOCKETS (2 FIXING HOLES), 240V~ 50Hz**

14307	-	-	20A & 10A Uni. Socket	8536	99	10
-------	---	---	-----------------------	------	----	----



14307

**MOTOR STARTER, 240V~ 50Hz**

52660	-	-	25A, Motor Starter S.P	8536	330	5
-------	---	---	------------------------	------	-----	---



52660

**UNI SWITCH SOCKET COMBINED UNITS, 240V~ 50Hz**

14614	-	-	20A&10A,Combined Unit with 2 Fixing Holes	8536	142	10
14615	-	-	20A&10A,Combined Unit with 4 Fixing Holes	8536	140	10
14616	-	-	20A&10A,Combined Unit Box with Box 2 Fixing Holes	8536	170	6
14310	-	-	20A/10A, SS Combined with Box with Box 4 fixing Holes	8536	170	6



14614 14615



14616 14310

**COMBINED UNIT, 240V~ 50Hz**

14617	-	-	20A/10A,Capton 5-In-1, 2 Fixing Holes	8536	214	6
14618*	-	-	20A/10A,Capton 5-In-1, 4 Fixing Holes	8536	215	6
14620	-	-	20A/10A,Capton 5-In-1, With Box 4 Fixing Holes	8536	230	6



14617 14618 14620



14315

**COMBINED UNIT WITH PLUG, 240V~ 50Hz**

14315	-	-	20A/10A,Capton 5-In-1 With Box & 16A Plug, 4 Fixing Holes	8536	307	6
-------	---	---	---	------	-----	---

\*Not Suitable For Penta Urea Box

**PENTA UREA**

**PENTA DELUXE, 240V~ 50Hz**



Code	Code	Code	Description	HSN	MRP	PKG
White	Ivory	Dark Brown				
38014	50010	38014DB	6A, 1 Way Switch	8536	18	20
38058	51373	38058DB	6A, 1Way Switch, Deluxe ( IP20)	8536	18	20
38025	50020	38025DB	6A, 2 Way Switch	8536	33	20
38047	50042	38047DB	6A, Bell Push Switch	8536	33	20

**PENTA PIANO, 240V~ 50Hz**



38069	50053	-	6A, 1 Way Switch	8536	18	20
38070	50064	-	6A, 2 Way Switch	8536	33	20
38091	50075	-	6A, Bell Push Switch	8536	33	20

**PENTA CHERRY, 240V~ 50Hz**



38193	50144	38193DB	6A, 1 Way Switch	8536	19	20
38194	50145	38194DB	6A, 1Way Switch (IP20)	8536	19	20
38207	50155	38207DB	6A, 2 Way Switch	8536	34	20
38218	50166	38218DB	6A, Bell Push Switch	8536	34	20

**PENTA SOCKETS, 240V~ 50Hz**

38331	50235	38331DB	6A, 2 Pin Socket	8536	31	20
38332	50236	38332DB	6A, 2 Pin Socket (IP20)	8536	31	10
38342	50246	-	6A, 3 Pin Socket	8536	40	10
38364	50279	38364DB	6A, 2-In-1 Socket	8536	34	20
38320	50938	38320DB	6A, 2-In-1 Socket (IP 20)	8536	34	20
38375	50280	38375DB	6A, Multi Socket For 2 & 3 Pin	8536	42	10
38353	50268	-	6A,3-in-1 Socket (2Pin +3 Pin Socket )	8536	40	10
38717	50290	-	6,10 & 13A Combi. Socket (for all kind of pins)	8536	59	20

**TELEPHONE JACK, 240V~ 50Hz**

38444	50326	38444DB	Mini Tel. Jack	8536	74	20
38455	50337	-	Delux Tel. Jack With Shutter	8536	86	10

**NEON LIGHT / TV ANTENNA OUTLET, 240V~ 50Hz**

38273	50359	38273DB	Neon Night Lamp , 240V~ 50Hz	8536	39	20
38400	50370	38400DB	Mini T.V. Outlet	8536	47	20
38411	50381	-	Deluxe T.V. Outlet	8536	50	10

**KIT KAT FUSE FLUSH, 240V~ 50Hz**

38295	50392	38295DB	10A, Mini Kit Kat Fuse	8536	52	10
38309	50406	38309DB	16A Deluxe Kit Kat Fuse	8536	60	10

**DELUXE / S.S. COMBINED, 240V~ 50Hz**

4056	50483	-	6A, 3 Pin S.S. Comb. Deluxe	8536	89	10
38820	50494	38820DB	6A, 2-In-1 S.S. Combined Deluxe	8536	89	10
38841	50508	-	6A, 2-In-1 S.S. Combined With Box	8536	110	5



**PENTA DELUXE SERIES, 240V~ 50Hz**

Code	Code	Code	Description	HSN	MRP	PKG
White	Ivory	Dark Brown				
39989	50961	-	20A, 1 Way Switch	8536	88	10
39993	50964	-	20A, & 10A, Uni Socket	8536	95	10

**CAPTON SERIES, 240V~ 50Hz**

39991	50962	39991DB	20A, 1 Way Switch	8536	93	10
38488	4169	38488DB	16A, 2 Way Switch	8536	114	10
38397	4170	-	16A, 3 Pin Socket	8536	97	10
39994	50965	39994DB	20A, & 10A, Uni Socket	8536	97	10
39992	50963	-	20A, 1 Way Switch with Box	8536	120	10
39995	50966	-	20A, & 10A, Uni Socket With Box	8536	122	10

**CAPTON 20 & 10A S.S COMB. WITH SHUTTER, 240V~ 50Hz**

4216	50643	-	16A, 3 Pin S.S. Combined	8536	137	10
39998	50969	39998DB	20A, & 10A, SS Combined with 4 Fixing Holes	8536	140	10
39999	50970	-	20A, & 10A, SS Combined with 2 Fixing Holes	8536	140	10
38794	4282	-	10/20A, S.S. Combined with Neon Indicator	8536	145	10
39996	50967	-	10/20A, S.S. Combined With JB Box with 2 Fixing Holes	8536	170	6
39593	51238	-	20A,/10A, SS Combined with Box with 4 Fixing Holes	8536	170	6

**5-IN-1 COMBINED UNIT, 240V~ 50Hz**

39550	51250	-	10/20A, Euro Capton, 5-In-1 with 2 Fixing Holes	8536	201	6
38580	4920	38580DB	10/20A, Euro Capton, 5-In-1 with 4 Fixing Holes	8536	201	6
38590	4522	-	10/20A, Neo Capton, 5-In-1 with 4 Fixing Holes	8536	194	6
38579	51103	-	10/20A, Capton, 5-In-1 with Box and 4 Fixing Holes	8536	218	6
39924	51351	-	10/20A, Capton, 5-In-1 with Box & 16A ISI Plug and 4 Fixing Holes	8536	313	6

**5-IN-1 COMBINED UNIT, 240V~ 50Hz, Urea Back Piece**

39981	50981	-	20A & 10A, Euro Capton 5-In-1 with 2 Fixing Holes	8536	201	6
39986	50986	39986DB	20A & 10A, Euro Capton 5-In-1 with 4 Fixing Holes	8536	201	6
39983	50983	-	20A & 10A, Neo Capton 5-In-1 with 4 Fixing Holes	8536	194	6
39984	50984	-	20A & 10A, 5 in 1 with box with 4 fixing Holes	8536	218	6
39985	50985	-	20A & 10A, , Capton 5-in-1 with box & 16A ISI plug, 4 Fixing Holes	8536	313	6

**FAN REGULATOR, 240V~ 50Hz**

38284	50790	38284DB	100W Mini Fan Regulator	8414	219	10
38660	50440	38660DB	100W Deluxe Fan Regulator	8414	247	10

**DIMMER CONTROLLER, 240V~ 50Hz**

38648	50428	38648DB	450W , Mini Dimmer	8543	224	10
38659	50439	38659DB	450W , Deluxe Dimmer	8543	248	10

**GENERAL ACCESSORIES**

**CORD SWITCHES, 240V~ 50Hz**

Code	Code	Code	Description	HSN	MRP	PKG
White	Ivory	Dark Brown				
2527	-	-	6A, 1 Way Bed Switch	8536	45	20
2538	-	-	Cord Through	8536	45	20
2593	-	-	Hanging Bell Push Switch	8536	45	20

**SUPREME FLUSH DIMMER / CONTROLLER, 240V~ 50Hz,**

8534	-	8534DB	450W, Supreme Metallic Flush	8538	291	10
8567	-	8567DB	650W, Supreme Metallic Flush	8538	332	10

**CLASSIC FLUSH DIMMER / CONTROLLER, 240V~ 50Hz**

8556	-	-	650W, Dimmer Classic Flush	8543	332	10
8589	-	-	1000W, Dimmer Classic Flush	8543	399	10

**OPEL SURFACE DIMMER / CONTROLLER, 240V~ 50Hz**

8410	8410IV	-	100W, Opel Fan Regulator	8414	282	10
-	8498	-	450W, Super Surface Dimmer Controller	8543	284	10

**SURFACE SERIES, 240V~ 50Hz**

2301	2301IV	-	6A, Surface 1 Way Switch	8536	35	10
2323	2323IV	-	6A, Surface Bell Push Switch	8536	40	10

**IRON CONNECTOR, 240V~ 50Hz**

6335	-	-	Front Porcelain Iron Connector (Deluxe)	8536	78	10
------	---	---	---	------	----	----

**CEILING ROSE, 240V~ 50Hz**

39017	3257	39017DB	6A, Pilot 2 Plate	8536	25	20
39040	3290	39040DB	6A, Pilot 3 Plate	8536	32	20
39028	3199	39028DB	6A, Jumbo 2 Plate	8536	37	20
39050	3224	-	6A, Jumbo 3 Plate	8536	40	20
39072	50916	51090	6A, Pilot 3 Plate	8536	32	20

**LAMP / PENDANT HOLDER (PLASTIC RING), 240V~ 50Hz**

14706	-	-	6A, Pendent Holder	8536	34	30
39527	51191	-	6A, Angle Holder	8536	36	30
38538	51205	-	6A, Batten Holder	8536	36	30



2527 2538 2593



8534/8567



8556/8589



8410 8498



2301 2323



6335



39017/39040 39028/39050 39072



14706 39527 38538



39797 39800



6506



5081 5070



5376



39094 39083



**3kA**

IS / IEC 60898-1



CM / L-8653085



**3kA**

IS / IEC 60898-1



CM / L-8653085

**LAMP HOLDER (WITH METAL RING), 240V~ 50Hz**

Code	Code	Code	Description	HSN	MRP	PKG
White	Ivory	Dark Brown				
39797	51169	-	6A, Angle Holder	8536	38	30
39800	51170	-	6A, Batten Holder	8536	38	30

**ADAPTOR, 240V~ 50Hz**

6506	51180	-	Adaptor	8536	25	20
------	-------	---	---------	------	----	----

**D.P SWITCH WITHOUT LINK, 240V~ 50Hz**

5081	5081IV	-	32A, Surface D.P Switch W/O Link	8536	133	10
5070	5070IV	-	32A, Flush Pilot D.P Switch W/O Link	8536	133	10

**TP SWITCH WITH NEON, 240V~ 50Hz**

5376	5376IV	-	32A, T.P Switch W/O Fuse	8536	294	6
------	--------	---	--------------------------	------	-----	---

**D.P SWITCH PILOT, 240V~ 50Hz**

39094	5037	39094DB	32A, Surface DP Switch With Neon	8536	153	6
39083	5140	39083DB	32A, Flush DP Switch With Neon	8536	153	6

**UNO MINI MCB**

98236	-	-	6A, SP 'C' Mini MCB	8536	227	12
98237	-	-	10A, SP 'C' Mini MCB	8536	227	12
98238	-	-	16A, SP 'C' Mini MCB	8536	227	12
98239	-	-	20A, SP 'C' Mini MCB	8536	227	12
98240	-	-	25A SP 'C' Mini MCB	8536	227	12
98241	-	-	32A, SP 'C' Mini MCB	8536	227	12
98246	-	-	6A, DP 'C' Mini MCB	8536	422	6
98247	-	-	10A, DP 'C' Mini MCB	8536	422	6
98248	-	-	16A, DP 'C' Mini MCB	8536	422	6
98249	-	-	20A, DP 'C' Mini MCB	8536	422	6
98250	-	-	25A DP 'C' Mini MCB	8536	422	6
98251	-	-	32A, DP 'C' Mini MCB	8536	422	6





33001 33004BK 33007



33025 33022



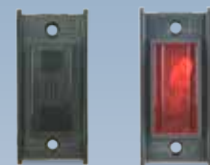
33067BK 33070BK



33052 33055



33040 33085 33088



33100BK 33103BK



33118 33121 33127 33124



33142BK 33145BK



33148BK

SWITCHES, 240V~ 50Hz



Code	Code	Description	HSN	MRP	PKG
White	Black				
33001	33001BK	6A, 1 Way Switch	8536	30	20
33004	33004BK	6A, 2 Way Switch	8536	40	20
33007	33007BK	6A, Bell Push	8536	40	20

2 PIN SOCKET, 240V~ 50Hz

33025	33025BK	6A, 2 Pin Round Socket	8536	40	20
-------	---------	------------------------	------	----	----

2-IN-1 SOCKET, 240V~ 50Hz

33022	33022BK	6A, 2-In-1 Socket	8536	50	10
-------	---------	-------------------	------	----	----

FAN REGULATOR, 240V~ 50Hz

33067	33067BK	100W,Fan Regulator Mini	8414	260	10
33070	33070BK	100W,Fan Regulator Delux	8414	290	10

DIMMER / CONTROLLER, 240V~ 50Hz

33052	33052BK	450W,mini Dimmer	8543	210	10
33055	33055BK	450W,Delux Dimmer	8543	260	10

T.V. OUTLET

33040	33040BK	T.V. Outlet Mini	8536	50	20
-------	---------	------------------	------	----	----

TEL. OUTLET WITH CONNECTOR / JACK

33085	33085BK	Tel. Jack Mini With Shutter	8536	70	20
33088	33088BK	Tel. Jack Deluxe With Shutter 2 Line	8536	90	10

KIT KAT FUSE FLUSH / NEON INDICATOR, 240V~ 50Hz

33100	33100BK	16A/10A,Kit Kat Fuse	8536	50	20
33103	33103BK	Neon Lamp	8536	40	20

POWER SWITCHES & SOCKETS, 240V~ 50Hz



33118	33118BK	20A, 1 Way Switch	8536	100	10
33121	33121BK	20A, 2 Way Switch	8536	120	10
33127	33127BK	20A/10A,Uni Socket With Shutter	8536	100	10
33124	33124BK	32A, D.P.Switch With Neon W/O Fuse	8536	140	10

COMBINED WITH SAFETY SHUTTER, 240V~ 50Hz



33142	33142BK	20A, 3-In-1 S.S. Combined	8536	170	10
33145	33145BK	20A, 5-In-1	8536	220	5
33148	-	20A, 5-In-1 With Box	8536	250	5



White Soft Ivory Azul Grey



Pearl White Jet Silver Copper Gold



Silver Magenta



Maroon Black

PASTEL PLATES

Colour	6A, Switch Size	6A, Socket or Bell Push	20A, Switch-Socket 32 D.P W/O Fuse	20A, S.S Combined 32A D.P With Fuse	20A, 5-In-1
White	33703 WH	33706 WH	33709 WH	33712 WH	33715 WH
Soft Ivory	33703 IV	33706 IV	33709 IV	33712 IV	33715 IV
Azul Grey	33703 AG	33706 AG	33709 AG	33712 AG	33715 AG
MRP	10 /-	10 /-	30 /-	40 /-	40 /-
Std.Pkg.	60	60	40	20	20

METALLIC PLATES

Colour	6A, Switch Size	6A, Socket or Bell Push	20A, Switch-Socket 32 D.P W/O Fuse	20A, S.S Combined 32A D.P With Fuse	20A, 5-In-1
Pearl White	33751 WP	33754 WP	33757 WP	33760 WP	33763 WP
Jet Sliver	33751 JS	33754 JS	33757 JS	33760 JS	33763 JS
Copper Gold	33751 CG	33754 CG	33757 CG	33760 CG	33763 CG
MRP	10 /-	20 /-	30 /-	50 /-	60 /-
Std.Pkg.	60	60	40	20	20

METALLIC 2 - TONE PLATES

Colour	6A, Switch Size	6A, Socket or Bell Push	20A, Switch-Socket 32 D.P W/O Fuse	20A, S.S Combined 32A D.P With Fuse	20A, 5-In-1
Sliver Magenta	33799 SM	33802 SM	33805 SM	33808 SM	33811 SM
MRP	10 /-	20 /-	30 /-	50 /-	60 /-
Std.Pkg.	60	60	40	20	20

SOFT 2 - TONE PLATES

Colour	6A, Switch Size	6A, Socket or Bell Push	20A, Switch-Socket 32 D.P W/O Fuse	20A, S.S Combined 32A D.P With Fuse	20A, 5-In-1
Marron Black	33823 MB	33826 MB	33829 MB	33832 MB	33835 MB
MRP	20 /-	20 /-	50 /-	60 /-	70 /-
Std.Pkg.	60	60	40	20	20

\*Above Plate colours available in all Modules

## INDUSTRIAL PRODUCTS

### 2 POLE D.P SHEET METAL SWITCH PILOT, 240V~ 50Hz

Code	Description	HSN	MRP	PKG
White				
17182	16A, 240V Neutral Link	8537	570	1
17615	16A, 240V D.P	8537	570	1
17626	32A, 240V D.P	8537	1050	1
17692	63A, 240V D.P	8537	1595	1

### 3 POLE T.P SHEET METAL SWITCH PILOT, 240V~ 50Hz

17637	16A, 415 V.T.P	8537	1141	1
17648	32A, 415 V.T.P	8537	1982	1
17659	63A, 415 V.T.P	8537	5118	1
17660	100A, 415 V.T.P	8537	8513	1
17670	200A, 415 V.T.P	8537	11375	1

### 2 POLE CHANGE OVER SWITCH PILOT, 240V~ 50Hz

17717	16A, 415 V	8536	1203	1
17728	32A, 415 V	8536	1676	1

### 3 POLE CHANGE OVER SWITCH PILOT, 240V~ 50Hz

17819	16A, 415 V	8536	1498	1
17820	32A, 415 V	8536	1898	1
17830	63A, 415 V	8536	4835	1

### 4 POLE CHANGE OVER SWITCH PILOT, 240V~ 50Hz

17910	16A, 415 V	8536	1743	1
17921	32A, 415 V	8536	2546	1
17932	63A, 415 V	8536	5970	1
17943	100A, 415 V	8536	10847	1

### PORCELAIN FUSE UNIT PILOT, 240V~ 50Hz

9297	16A, 240V	8536	57	10
9300	16A, 415V (32A-240V)	8536	99	10
9311	32A, 415V (63A-240V)	8536	182	5
9322	63A, 415V	8536	456	1
9333	100A, 415V	8536	805	1
9480	200A, 415V	8536	1355	1

### FUSE UNIT WITH BUS BAR LINK, 240V~ 50Hz

17309	300A - 415V	8536	1894	1
-------	-------------	------	------	---



17182  
17615  
17626

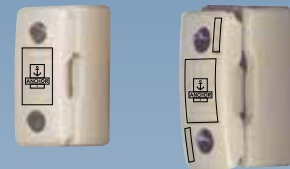
17692  
17637  
17648

17659  
17660  
17670  
17717  
17728



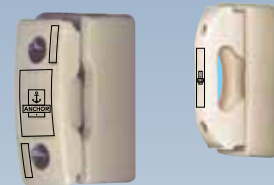
17819  
17820  
17830  
17910

17921  
17932  
17943



9297  
9300

9311



9322

9333  
9480



17309

## SURFACE & DOMESTIC BOXES

### SURFACE MOUNTING BOX FOR SWITCHES

Code	Code	Description	HSN	MRP	PKG
White	Ivory				
7010	7010IV	1 Gang Box	8538	17	20
7021	7021IV	2 Gang Box	8538	26	20
7032	7032IV	3 Gang Box	8538	36	10
7043	7043IV	4 Gang Box	8538	41	10
7054	7054IV	5 Gang Box	8538	47	10
7065	7065IV	6 Gang Box	8538	62	10
7076	7076IV	7 Gang Box	8538	68	10

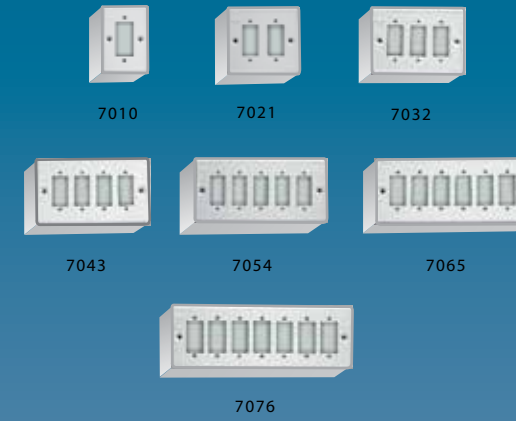
### DOMESTIC SURFACE MOUNTING BOX

7305	7305IV	1 Gang Box	8538	23	10
7112	7112IV	2 Gang Box	8538	30	20
7123	7123IV	3 Gang Box	8538	40	10
7134	7134IV	4 Gang Box	8538	46	10
7145	7145IV	5 Gang Box	8538	49	10
7156	7156IV	6 Gang Box	8538	63	10
7203	7203IV	4 Gang Box (Double Domestic)	8538	59	10
7214	7214IV	5 Gang Box (Double Domestic)	8538	68	10
7393	7393IV	6 Gang Box (Double Domestic)	8538	73	10

Note: These Mounting Boxes are not Suitable for Fan Regulator & Dimmer

### DOMESTIC SURFACE MOUNTING BOX

PB0404AW	PB0404AIV	Plastic Surface Box- 4X4	54	10
PB0404BW	PB0404BIV	Plastic Surface Box, 4X4, 1 Way	57	10
PB0404CW	PB0404CIV	Plastic Surface Box, 4X4, 2 Way	57	10
PB0404DW	PB0404DIV	Plastic Surface Box, 4X4, 3 Way	57	10
PB0407AW	PB0407AIV	Plastic Surface Box- 4X7	73	5
PB0407BW	PB0407BIV	Plastic Surface Box, 4X7, 4 Way	84	5
PB0608AW	PB0608AIV	Plastic Surface Box -6X8	103	5
PB0608BW	PB0608BIV	Plastic Surface Box, 6X8, 8 Way	104	5
PB0810AW	PB0810AIV	Plastic Surface Box- 8X10	146	5
PB0810BW	PB0810BIV	Plastic Surface Box, 8X10, 9 way DP	155	5
PB1012AW	PB1012AIV	Plastic Surface Box- 10X12	193	5
PB1012BW	PB1012BIV	Plastic Surface Box 10X12, 12 way DP	200	5





**Panasonic Life Solutions India Pvt. Ltd.,**

3rd Floor, B Wing, I-Think Techno Campus, Pokharan Road No. 2, Thane (W), Thane - 400 607, Maharashtra.

Tel.: (022) 42228888 | WhatsApp: 9136028606 | Fax: (022) 42228884

Customer Care Cell: (022) 41304130

Email: [info@in.panasonic.com](mailto:info@in.panasonic.com) | [www.lsin.panasonic.com](http://www.lsin.panasonic.com)

Dealers Stamp