



ROMA
Beyond Aspiration

**SWITCH
ON THE
INSPIRATION**



Panasonic Life Solutions India Pvt. Ltd.,
3rd Floor, B Wing, I-Think Techno Campus, Pokharan Road No.2, Thane (W), Thane - 400 607.
T: (9122) 42228888 | WhatsApp no.: 9136028606 | F: (9122) 42228884
Customer Care no.: 022-41304130 / Email: info@in.panasonic.com
www.lsin.panasonic.com

Dealers Stamp

Price List: April 2019

SWITCH TO THE WORLD OF GLAMOUR.



SLIM & SLEEK DESIGN

The special slim & sleek design of the new ROMA range is crafted for the modern generation who want their space to be more than just a space. The unique curve design of the cover plate gives these switches a smooth finish. The curved look makes the space classier and more glamorous.

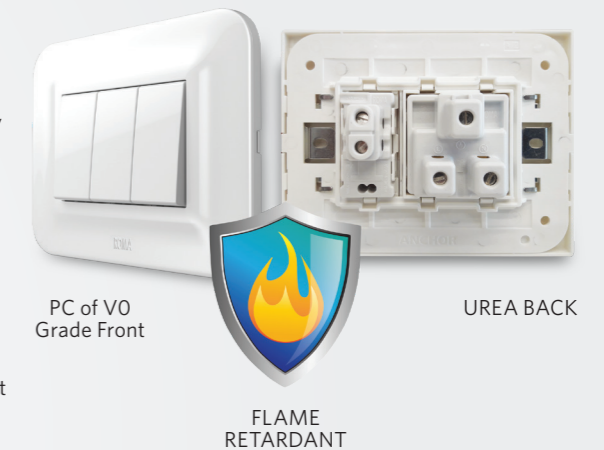


SUPER GLOSSY FINISH

The super glossy finish gives these switches the ultimate premium look. They effortlessly complement the interior decoration of a space. Plus, the design also ensures that dust does not settle easily.

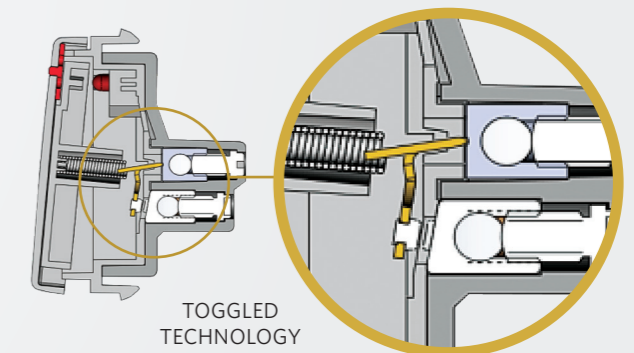
EXTRA SAFETY

Urea back and front PC of V0 grade material used provides extra safety. It has flame retardant properties, which makes the switches safer with a longer lifespan. It also has higher heat resistance properties as compared to PC of other grades and thermoplastics. In addition to this, the moulding of the switches is not easy. The technology used in developing the special designs and shapes involves high cost and hi tech infrastructure, which makes the duplicity of the product



TOGGLED TECHNOLOGY

The all new range of ROMA is not only pleasing to the eyes but also to the ears. Toggle type mechanism is an advanced switch operation technique which provides soft sound. It makes the switches easy to operate and also increases the lifespan of the switch.



SWITCHES & ACCESSORIES

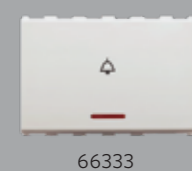


10AX SWITCHES (240V-50Hz)



CODE	DESCRIPTION	HSN	MRP	PKD
66101	10AX, 1Way Switch, 1M	8536	₹ 115	20
66111	10AX, 1Way Switch with Indicator, 1M	8536	₹ 144	20
66102	10AX, 2Way Switch, 1M	8536	₹ 145	20
66103	10A, Bell Push Switch, 1M	8536	₹ 145	20
66133	10A, Bell Push Switch with Indicator, 1M	8536	₹ 158	20
66201	10AX, 1Way Switch, 2M	8536	₹ 149	10
66211	10AX, 1Way Switch with Indicator, 2M	8536	₹ 168	10
66202	10AX, 2Way Switch, 2M	8536	₹ 168	10
66203	10A, Bell Push Switch, 2M	8536	₹ 168	10
66233	10A, Bell Push Switch with Indicator, 2M	8536	₹ 185	10

10A BELL PUSH (240V-50Hz)



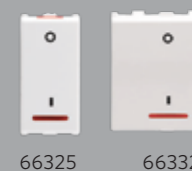
CODE	DESCRIPTION	HSN	MRP	PKD
66333	10A, Bell Push Switch with Indicator, 3M	8536	₹ 209	5

20A SWITCHES (240V-50Hz)



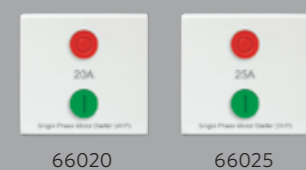
CODE	DESCRIPTION	HSN	MRP	PKD
66104	20A, 1Way Switch, 1M	8536	₹ 164	20
66144	20A, 1Way Switch with Indicator, 1M	8536	₹ 196	20
66105	20A, 2Way Switch, 1M	8536	₹ 180	20
66204	20A, 1Way Switch, 2M	8536	₹ 203	10
66244	20A, 1Way Switch with Indicator, 2M	8536	₹ 223	10
66205	20A, 2Way Switch, 2M	8536	₹ 217	10
66301	20A, 1Way Switch, 3M	8536	₹ 251	5
66311	20A, 1Way Switch with Indicator, 3M	8536	₹ 314	5
66302	20A, 2Way Switch, 3M	8536	₹ 310	5

POWER SWITCHES - HEAVY DUTY (240V-50Hz)



CODE	DESCRIPTION	HSN	MRP	PKD
66325	25A, S.P, 1Way Switch with Indicator, 1M	8536	₹ 238	10
66332	32A, D.P, 1Way Switch with Indicator, 2M	8536	₹ 302	10

MOTOR STARTER SWITCHES - OVERLOAD PROTECTION



CODE	DESCRIPTION	HSN	MRP	PKD
66020	20A, Motor Starter, 2M	8536	₹ 542	10
66025	25A, Motor Starter, 2M	8536	₹ 542	10

SOCKETS WITH SAFETY SHUTTER (240V-50Hz)



CODE	DESCRIPTION	HSN	MRP	PKD
66401	6A, 2Pin Uro Socket, 1M	8536	₹ 112	20
66402	6A, 3Pin Socket, 2M	8536	₹ 149	10
66403	10A, Multi Socket, 2M	8536	₹ 162	10
66404	16A, 3Pin Socket, Tested upto 25A, 2M	8536	₹ 240	10
66414	25A, 3Pin Socket, 2M	8536	₹ 280	10

* 16A,20A,25A Switch not suggested for geyser load. Instead MCB/Motor Stater must be used.

SOCKETS WITH SAFETY SHUTTER (240V-50Hz)



CODE	DESCRIPTION	HSN	MRP	PKD
66405	20A/10A, Twin Socket, 2M	8536	₹ 261	10
66455	6A/16A - Twin Socket	8536	₹ 290	10
66406	20A/10A, Twin Socket, 3M	8536	₹ 304	5
66407	6A/10A/13A, Combi Socket for all Pins, 2M	8536	₹ 270	10

EME FAN REGULATORS & DIMMERS (240V-50Hz)



CODE	DESCRIPTION	HSN	MRP	PKD
66501	100W, Step Fan Regulator, 1M	8414	₹ 438	20
66502	100W, Step Fan Regulator, 2M	8414	₹ 587	10
66503	100W, Step Fan Regulator, 2M	8414	₹ 596	10
66504	100W, Step Fan Regulator (For High Speed Fans)	8414	₹ 607	10
66505	450W, Dimmer, 1M (For Incandescent Lamp)	8543	₹ 387	20
66506	650W, Dimmer, 2M (For Incandescent Lamp)	8543	₹ 527	10
66507	150W, Dimmer, 2M (For LED Lamp)	8543	₹ 1,237	10

SUPPORT MODULES (240V-50Hz)



CODE	DESCRIPTION	HSN	MRP	PKD
66551	RJ11, Tel Jack, Single with Shutter, 1M	8536	₹ 134	20
66552	RJ11, Tel Jack, Double w/o Shutter, 1M	8536	₹ 190	20
66555	RJ45, Receptor with Shutter, 1M	8536	₹ 135	20
66556	RJ45, Computer Socket, Cat 5e, 1M	8536	₹ 489	20
66557	RJ45, Computer Socket, Cat 6, 1M	8536	₹ 558	20
66601	Cord Outlet with Grip, 1M	8536	₹ 111	20
66602	TV Socket Outlet, 1M	8536	₹ 134	20
66603	Buzzer, Dura, 2M	8531	₹ 164	10
66604	Blank Plate, 1M	8538	₹ 32	50
66644	Blank Plate, 2M	8538	₹ 53	20
66606	6A, Overload Protection - Manual Resettable Fuse, 1M	8536	₹ 168	20
66616	16A, Overload Protection - Manual Resettable Fuse, 1M	8536	₹ 168	20
66605R	Indicator - LED (Red), 1M	8536	₹ 158	10
66605N	Indicator - LED (Natural), 1M	8536	₹ 158	10
66605G	Indicator - LED (Green), 1M	8536	₹ 158	10
66608	Satellite Socket	8536	₹ 252	10
66709	USB Charger, Single Port, 1000mA, 5V, 1M	8536	₹ 891	20
66715	USB Charger, Single Port, 2100mA, 5V, 1M	8536	₹ 998	20
66710	USB Charger, Dual Port, 2.0A, 5V, 2M	8536	₹ 1,885	6
66711	HDMI Connector, 1M	8536	₹ 942	10
66712	Audio Video Socket, 1M	8536	₹ 418	10

HOSPITALITY RANGE (240V-50Hz)



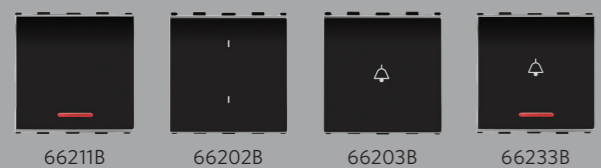
CODE	DESCRIPTION	HSN	MRP	PKD
66701	20A, Electronic Keycard Unit with 30 Sec time delay, 3M	8536	₹ 1,780	6
66702	DND MMR Internal unit (DND Switch, MMR Switch), 2M	8536	₹ 471	5
66703	DND MMR External unit (DND & MMR Indicator & Bell push Switch), 2M	8536	₹ 629	5
66704	20VA, Shaver Socket with Transformer (With 4M Curvy Plate), White	8536	₹ 2,094	5
66714	20VA, Shaver Socket with Transformer (With 4M Square Plate), White	8536	₹ 2,094	5
66705	Bell Call Indicator, 1M	8536	₹ 294	20
66706	Foot Light, LED Based (Cool Day light), 3M	9405	₹ 459	6
66766	Foot Light, LED Based (Warm White light), 3M	9405	₹ 459	6
66707	Foot Light with PIR (Cool Day Light), 2M	8512	₹ 3,612	6
66777	Foot Light with PIR (Warm White), 2M	8512	₹ 3,612	6
66708	PIR Sensor, 2M	8536	₹ 3,140	6

* Combi Socket: Compatible with Plug Size ≤ 46mm.

BLACK SWITCHES & ACCESSORIES

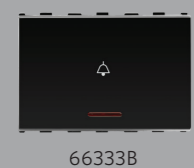


10AX SWITCHES (240V-50Hz)



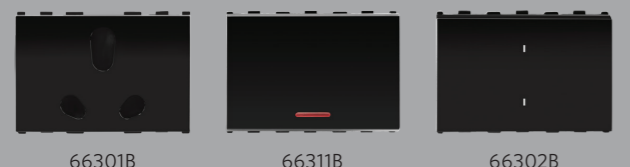
CODE	DESCRIPTION	HSN	MRP	PKD
66101B	10AX, 1Way Switch, 1M	8536	₹ 119	20
66111B	10AX, 1Way Switch with Indicator, 1M	8536	₹ 152	20
66102B	10AX, 2Way Switch, 1M	8536	₹ 149	20
66103B	10A, Bell Push Switch, 1M	8536	₹ 153	20
66133B	10A, Bell Push Switch with Indicator, 1M	8536	₹ 165	20
66201B	10AX, 1Way Switch, 2M	8536	₹ 155	10
66211B	10AX, 1Way Switch with Indicator, 2M	8536	₹ 177	10
66202B	10AX, 2Way Switch, 2M	8536	₹ 177	10
66203B	10A, Bell Push Switch, 2M	8536	₹ 177	10
66233B	10A, Bell Push Switch with Indicator, 2M	8536	₹ 194	10

10A BELL PUSH (240V-50Hz)



CODE	DESCRIPTION	HSN	MRP	PKD
66333B	10A, Bell Push Switch with Indicator, 3M	8536	₹ 221	5

20A SWITCHES (240V-50Hz)



CODE	DESCRIPTION	HSN	MRP	PKD
66104B	20A, 1Way Switch, 1M	8536	₹ 173	20
66144B	20A, 1Way Switch with Indicator, 1M	8536	₹ 206	20
66105B	20A, 2Way Switch, 1M	8536	₹ 189	20
66204B	20A, 1Way Switch, 2M	8536	₹ 213	10
66244B	20A, 1Way Switch with Indicator, 2M	8536	₹ 236	10
66205B	20A, 2Way Switch, 2M	8536	₹ 227	10
66301B	20A, 1Way Switch, 3M	8536	₹ 263	5
66311B	20A, 1Way Switch with Indicator, 3M	8536	₹ 330	5
66302B	20A, 2Way Switch, 3M	8536	₹ 326	5

POWER SWITCHES - HEAVY DUTY (240V-50Hz)



CODE	DESCRIPTION	HSN	MRP	PKDZ
66325B	25A, S.P, 1Way Switch with Indicator, 1M	8536	₹ 250	10
66332B	32A, D.P, 1Way Switch with Indicator, 2M	8536	₹ 318	10

MOTOR STARTER SWITCHES - OVERLOAD PROTECTION



CODE	DESCRIPTION	HSN	MRP	PKD
66020B	20A, Motor Starter, 2M	8536	₹ 568	10
66025B	25A, Motor Starter, 2M	8536	₹ 568	10

SOCKETS WITH SAFETY SHUTTER (240V-50Hz)



CODE	DESCRIPTION	HSN	MRP	PKD
66401B	6A, 2Pin Uro Socket, 1M	8536	₹ 120	20
66402B	6A, 3Pin Socket, 2M	8536	₹ 155	10
66403B	10A, Multi Socket, 2M	8536	₹ 169	10
66404B	16A, 3Pin Socket, Tested Upto 25A, 2M	8536	₹ 250	10
66414B	25A, 3Pin Socket, 2M	8536	₹ 295	10

* 16A,20A,25A Switch not suggested for geyser load. Instead MCB/Motor Stater must be used.

SOCKETS WITH SAFETY SHUTTER (240V-50Hz)



CODE	DESCRIPTION	HSN	MRP	PKD
66405B	20A/10A, Twin Socket, 2M	8536	₹ 274	10
66455B	6A/16A - Twin Socket	8536	₹ 305	10
66406B	20A/10A, Twin Socket, 3M	8536	₹ 320	5
66407B	6A/10A/13A, Combi Socket for all Pins, 2M	8536	₹ 284	10

EME FAN REGULATORS & DIMMERS (240V-50Hz)



CODE	DESCRIPTION	HSN	MRP	PKD
66501B	100W, Step Fan Regulator, 1M	8414	₹ 460	20
66502B	100W, Step Fan Regulator, 2M	8414	₹ 615	10
66503B	100W, Step Fan Regulator, 2M	8414	₹ 625	10
66504B	100W, Step Fan Regulator (For High Speed Fans)	8414	₹ 639	10
66505B	450W, Dimmer, 1M (For Incandescent Lamp)	8543	₹ 408	20
66506B	650W, Dimmer, 2M (For Incandescent Lamp)	8543	₹ 552	10
66507B	150W, Dimmer, 2M (For LED Lamp)	8543	₹ 1,299	10

SUPPORT MODULES



CODE	DESCRIPTION	HSN	MRP	PKD
66551B	RJ11, Tel Jack, Single with Shutter, 1M	8536	₹ 139	20
66552B	RJ11, Tel Jack, Double w/o Shutter, 1M	8536	₹ 199	20
66555B	RJ45, Receptor with shutter, 1M	8536	₹ 141	20
66556B	RJ45, Computer Socket, Cat 5e, 1M	8536	₹ 513	20
66557B	RJ45, Computer Socket, Cat 6, 1M	8536	₹ 587	20
66601B	Cord Outlet with Grip, 1M	8536	₹ 116	20
66602B	TV Socket Outlet, 1M	8536	₹ 139	20
66603B	Buzzer, Dura, 2M	8531	₹ 173	10
66604B	Blank Plate, 1M	8538	₹ 33	50
66644B	Blank Plate, 2M	8538	₹ 57	20
66606B	6A, Overload Protection - Manual Resettable Fuse, 1M	8536	₹ 177	20
66616B	16A, Overload Protection - Manual Resettable Fuse, 1M	8536	₹ 177	20
66605R	Indicator - LED (Red), 1M	8536	₹ 158	10
66605N	Indicator - LED (Natural), 1M	8536	₹ 158	10
66605G	Indicator - LED (Green), 1M	8536	₹ 158	10
66608B	Satellite Socket	8536	₹ 284	10
66709B	USB Charger, Single Port, 1000mA, 5V, 1M	8536	₹ 932	20
66715B	USB Charger, Single Port, 2100mA, 5V, 1M	8536	₹ 1050	20
66710B	USB Charger, Dual Port, 2.0A, 5V, 2M	8536	₹ 1,978	6
66711B	HDMI Connector, 1M	8536	₹ 1,377	10
66712B	Audio Video Socket, 1M	8536	₹ 440	10

HOSPITALITY RANGE



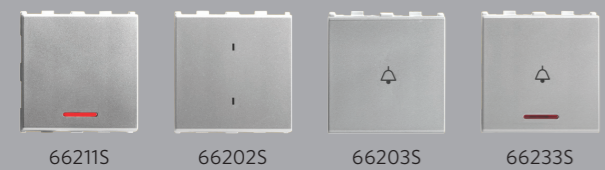
CODE	DESCRIPTION	HSN	MRP	PKD
66701B	20A, Electronic Keycard Unit with 30Sec time delay, 3M	8536	₹ 1,869	6
66702B	DND MMR Internal unit (DND Switch, MMR Switch), 2M	8536	₹ 493	5
66703B	DND MMR External unit (DND Indicator, MMR Indicator & Bell push Switch), 2M	8536	₹ 660	5
66704B	20VA, Shaver Socket with Transformer (With 4M Curvy Plate), Black	8536	₹ 2,199	5
66714B	20VA, Shaver Socket with Transformer (With 4M Square Plate), Black	8536	₹ 2,199	5
66705B	Bell Call Indicator, 1M	8536	₹ 310	20
66706B	Foot Light, LED Based (Cool Day light), 3M	9405	₹ 484	6
66766B	Foot Light, LED Based (Warm White light), 3M	9405	₹ 484	6
66707B	Foot Light with PIR (Cool Day Light), 2M	8512	₹ 3,848	6
66777B	Foot Light with PIR (Warm White), 2M	8512	₹ 3,848	6
66708B	PIR Sensor, 2M	8531	₹ 3,350	6

* Combi Socket: Compatible with Plug Size ≤ 46mm.

SILVER SWITCHES & ACCESSORIES



10AX SWITCHES (240V-50Hz)



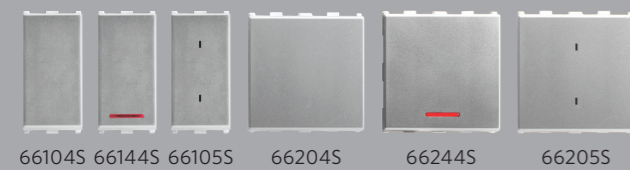
CODE	DESCRIPTION	HSN	MRP	PKD
66101S	10AX, 1Way Switch, 1M	8536	₹ 119	20
66111S	10AX, 1Way Switch with Indicator, 1M	8536	₹ 152	20
66102S	10AX, 2Way Switch, 1M	8536	₹ 149	20
66103S	10A, Bell Push Switch, 1M	8536	₹ 153	20
66133S	10A, Bell Push Switch with Indicator, 1M	8536	₹ 165	20
66201S	10AX, 1Way Switch, 2M	8536	₹ 155	10
66211S	10AX, 1Way Switch with Indicator, 2M	8536	₹ 177	10
66202S	10AX, 2Way Switch, 2M	8536	₹ 177	10
66203S	10A, Bell Push Switch, 2M	8536	₹ 177	10
66233S	10A, Bell Push Switch with Indicator, 2M	8536	₹ 194	10

10A BELL PUSH (240V-50Hz)



CODE	DESCRIPTION	HSN	MRP	PKD
66333S	10A, Bell Push Switch with Indicator, 3M	8536	₹ 221	5

20A SWITCHES (240V-50Hz)



CODE	DESCRIPTION	HSN	MRP	PKD
66104S	20A, 1Way Switch, 1M	8536	₹ 173	20
66144S	20A, 1Way Switch with Indicator, 1M	8536	₹ 206	20
66105S	20A, 2Way Switch, 1M	8536	₹ 189	20
66204S	20A, 1Way Switch, 2M	8536	₹ 213	10
66244S	20A, 1Way Switch with Indicator, 2M	8536	₹ 236	10
66205S	20A, 2Way Switch, 2M	8536	₹ 227	10
66301S	20A, 1Way Switch, 3M	8536	₹ 263	5
66311S	20A, 1Way Switch with Indicator, 3M	8536	₹ 330	5
66302S	20A, 2Way Switch, 3M	8536	₹ 326	5

POWER SWITCHES - HEAVY DUTY (240V-50Hz)



CODE	DESCRIPTION	HSN	MRP	PKD
66325S	25A, S.P, 1Way Switch with Indicator, 1M	8536	₹ 250	10
66332S	32A, D.P, 1Way Switch with Indicator, 2M	8536	₹ 318	10

MOTOR STARTER SWITCHES - OVERLOAD PROTECTION



CODE	DESCRIPTION	HSN	MRP	PKD
66020S	20A, Motor Starter, 2M	8536	₹ 568	10
66025S	25A, Motor Starter, 2M	8536	₹ 568	10

SOCKETS WITH SAFETY SHUTTER (240V-50Hz)



CODE	DESCRIPTION	HSN	MRP	PKD
66401S	6A, 2Pin Uro Socket, 1M	8536	₹ 120	20
66402S	6A, 3Pin Socket, 2M	8536	₹ 155	10
66403S	10A, Multi Socket, 2M	8536	₹ 169	10
66404S	16A, 3Pin Socket, Tested Upto 25A, 2M	8536	₹ 250	10
66414S	25A, 3Pin Socket, 2M	8536	₹ 295	10

* 16A,20A,25A Switch not suggested for geyser load. Instead MCB/Motor Stater must be used.

SOCKETS WITH SAFETY SHUTTER (240V-50Hz)



CODE	DESCRIPTION	HSN	MRP	PKD
66405S	20A/10A, Twin Socket, 2M	8536	₹ 274	10
66455S	6A/16A - Twin Socket	8536	₹ 305	10
66406S	20A/10A, Twin Socket, 3M	8536	₹ 320	5
66407S	6A/10A/13A, Combi Socket for all Pins, 2M	8536	₹ 284	10

EME FAN REGULATORS & DIMMERS (240V-50Hz)



CODE	DESCRIPTION	HSN	MRP	PKD
66501S	100W, Step Fan Regulator, 1M	8414	₹ 460	20
66502S	100W, Step Fan Regulator, 2M	8414	₹ 615	10
66503S	100W, Step Fan Regulator, 2M	8414	₹ 625	10
66504S	100W, Step Fan Regulator (For High Speed Fans)	8414	₹ 639	10
66505S	450W, Dimmer, 1M (For Incandescent Lamp)	8543	₹ 408	20
66506S	650W, Dimmer, 2M (For Incandescent Lamp)	8543	₹ 552	10
66507S	150W, Dimmer, 2M (For LED Lamp)	8543	₹ 1,299	10

SUPPORT MODULES



CODE	DESCRIPTION	HSN	MRP	PKD
66551S	RJ11, Tel Jack, Single with Shutter, 1M	8536	₹ 139	20
66552S	RJ11, Tel Jack, Double w/o Shutter, 1M	8536	₹ 199	20
66555S	RJ45, Receptor with shutter, 1M	8536	₹ 141	20
66556S	RJ45, Computer Socket, Cat 5e, 1M	8536	₹ 513	20
66557S	RJ45, Computer Socket, Cat 6, 1M	8536	₹ 587	20
66601S	Cord Outlet with Grip, 1M	8536	₹ 116	20
66602S	TV Socket Outlet, 1M	8536	₹ 139	20
66603S	Buzzer, Dura, 2M	8531	₹ 173	10
66604S	Blank Plate, 1M	8538	₹ 33	50
66644S	Blank Plate, 2M	8538	₹ 57	20
66606S	6A, Overload Protection - Manual Resettable Fuse, 1M	8536	₹ 177	20
66616S	16A, Overload Protection - Manual Resettable Fuse, 1M	8536	₹ 177	20
66605R	Indicator - LED (Red), 1M	8536	₹ 158	10
66605N	Indicator - LED (Natural), 1M	8536	₹ 158	10
66605G	Indicator - LED (Green), 1M	8536	₹ 158	10
66608S	Satellite Socket	8536	₹ 284	10
66709S	USB Charger, Single Port, 1000mA, 5V, 1M	8536	₹ 932	20
66715S	USB Charger, Single Port, 2100mA, 5V, 1M	8536	₹ 1050	20
66710S	USB Charger, Dual Port, 2.0A, 5V, 2M	8536	₹ 1,978	6
66711S	HDMI Connector, 1M	8536	₹ 1,377	10
66712S	Audio Video Socket, 1M	8536	₹ 440	10

HOSPITALITY RANGE



CODE	DESCRIPTION	HSN	MRP	PKD
66701S	20A, Electronic Keycard Unit with 30Sec time delay, 3M	8536	₹ 1,869	6
66702S	DND MMR Internal unit (DND Switch, MMR Switch), 2M	8536	₹ 493	5
66703S	DND MMR External unit (DND Indicator, MMR Indicator & Bell push Switch), 2M	8536	₹ 660	5
66704S	20VA, Shaver Socket with Transformer (With 4M Curvy Plate), Black	8536	₹ 2,199	5
66714S	20VA, Shaver Socket with Transformer (With 4M Square Plate), Black	8536	₹ 2,199	5
66705S	Bell Call Indicator, 1M	8536	₹ 310	20
66706S	Foot Light, LED Based (Cool Day light), 3M	9405	₹ 484	6
66766S	Foot Light, LED Based (Warm White light), 3M	9405	₹ 484	6
66707S	Foot Light with PIR (Cool Day Light), 2M	8512	₹ 3,848	6
66777S	Foot Light with PIR (Warm White), 2M	8512	₹ 3,848	6
66708S	PIR Sensor, 2M	8531	₹ 3,350	6

* Combi Socket: Compatible with Plug Size ≤ 46mm.



PURE

COLOUR	MODULE	1 MODULE	2 MODULE	3 MODULE	4 MODULE	6 MODULE	8 MODULE HORIZONTAL	8 MODULE VERTICAL	9 MODULE HORIZONTAL	12 MODULE	16 MODULE	18 MODULE
WHITE CURVE DESIGN	CODE	66801WH	66802WH	66803WH	66804WH	66806WH	66808WH	66888WH	66809WH	66812WH	66816WH	66818WH
	HSN	8538	8538	8538	8538	8538	8538	8538	8538	8538	8538	8538
WHITE SQUARE DESIGN	CODE	66901WH	66902WH	66903WH	66904WH	66906WH	66908WH	66988WH	66909WH	66912WH	66916WH	66918WH
	HSN	8538	8538	8538	8538	8538	8538	8538	8538	8538	8538	8538
	MRP (₹)	115	115	146	173	238	305	305	378	413	423	440
	PKG	10	10	10	10	10	10	5	10	5	5	5

CLEAR

GLASS PLATE	MODULE	1 MODULE	2 MODULE	3 MODULE	4 MODULE	6 MODULE	8 MODULE HORIZONTAL	8 MODULE VERTICAL	12 MODULE	16 MODULE	18 MODULE
PURE WHITE	CODE	66901GPW	66902GPW	66903GPW	66904GPW	66906GPW	66908GPW	66988GPW	66912GPW	66916GPW	66918GPW
	CODE	66901GSB	66902GSB	66903GSB	66904GSB	66906GSB	66908GSB	66988GSB	66912GSB	66916GSB	66918GSB
AQUA BLUE	CODE	66901GAB	66902GAB	66903GAB	66904GAB	66906GAB	66908GAB	66988GAB	66912GAB	66916GAB	66918GAB
	HSN	8538	8538	8538	8538	8538	8538	8538	8538	8538	8538
	MRP (₹)	680	680	877	1,011	1,444	1,804	1,804	2,243	2,521	2,630
	PKG	5	5	5	5	5	5	5	5	5	5

BOLD

COLOUR	MODULE	1 MODULE	2 MODULE	3 MODULE	4 MODULE	6 MODULE	8 MODULE HORIZONTAL	8 MODULE VERTICAL	9 MODULE HORIZONTAL	12 MODULE	16 MODULE	18 MODULE
BLACK CURVE DESIGN	CODE	66801BL	66802BL	66803BL	66804BL	66806BL	66808BL	66888BL	66809BL	66812BL	66816BL	66818BL
	CODE	66901BL	66902BL	66903BL	66904BL	66906BL	66908BL	66988BL	66909BL	66912BL	66916BL	66918BL
BLACK SQUARE DESIGN	HSN	8538	8538	8538	8538	8538	8538	8538	8538	8538	8538	8538
	MRP (₹)	121	121	152	177	248	320	320	393	433	444	460
	PKG	10	10	10	10	10	10	5	10	5	5	5

SHEEN

METAL PLATE	MODULE	1 MODULE	2 MODULE	3 MODULE	4 MODULE	6 MODULE	8 MODULE HORIZONTAL	8 MODULE VERTICAL	12 MODULE	16 MODULE	18 MODULE
GOLD	CODE	66901GD	66902GD	66903GD	66904GD	66906GD	66908GD	66988GD	66912GD	66916GD	66918GD
	HSN	8538	8538	8538	8538	8538	8538	8538	8538	8538	8538
	MRP (₹)	747	747	874	1,024	1,343	1,533	1,533	2,237	2,763	2,874
Brushed Aluminium	CODE	66901BA	66902BA	66903BA	66904BA	66906BA	66908BA	66988BA	66912BA	66916BA	66918BA
	MRP (₹)	635	635	743	869	1,142	1,304	1,304	1,900	2,349	2,442
	PKG	5	5	5	5	5	5	5	5	5	5

Do not use "Hard Cleaning Agent" for cleaning purpose.

CLASSY

COLOUR	MODULE	1 MODULE	2 MODULE	3 MODULE	4 MODULE	6 MODULE	8 MODULE HORIZONTAL	8 MODULE VERTICAL	9 MODULE HORIZONTAL	12 MODULE	16 MODULE	18 MODULE
SILVER CURVE DESIGN	CODE	66801SL	66802SL	66803SL	66804SL	66806SL	66808SL	66888SL	66809SL	66812SL	66816SL	66818SL
	CODE	66901SL	66902SL	66903SL	66904SL	66906SL	66908SL	66988SL	66909SL	66912SL	66916SL	66918SL
SILVER SQUARE DESIGN	HSN	8538	8538	8538	8538	8538	8538	8538	8538	8538	8538	8538
	MRP (₹)	121	121	152	177	248	320	320	393	433	444	460
	PKG	10	10	10	10	10	10	5	10	5	5	5

HUE

COLOUR PLATE WITH FRAME	MODULE	1 MODULE	2 MODULE	3 MODULE	4 MODULE	6 MODULE	8 MODULE HORIZONTAL	8 MODULE VERTICAL	9 MODULE HORIZONTAL	12 MODULE	16 MODULE	18 MODULE
SEA BLUE	CODE	66801SBG	66802SBG	66803SBG	66804SBG	66806SBG	66808SBG	66888SBG	66809SBG	66812SBG	66816SBG	66818SBG
ORIENTAL MAROON	CODE	66801OMS	66802OMS	66803OMS	66804OMS	66806OMS	66808OMS	66888OMS	66809OMS	66812OMS	66816OMS	66818OMS
COPPER WHITE	CODE	66801WHC	66802WHC	66803WHC	66804WHC	66806WHC	66808WHC	66888WHC	66809WHC	66812WHC	66816WHC	66818WHC
LAMP BLACK	CODE	66801LBC	66802LBC	66803LBC	66804LBC	66806LBC	66808LBC	66888LBC	66809LBC	66812LBC	66816LBC	66818LBC
	HSN	8538	8538	8538	8538	8538	8538	8538	8538	8538	8538	8538
WOODY	MRP (₹)	157	157	202	232	324	413	413	510	567	573	600
	CODE	66801WDB	66802WDB	66803WDB	66804WDB	66806WDB	66808WDB	66888WDB	66809WDB	66812WDB	66816WDB	66818WDB
	MRP (₹)	248	248	320	368	517	662	662	815	908	917	960
	PKG.	5	5	5	5	5	5	5	5	5	5	5

Do not use "Hard Cleaning Agent" for cleaning purpose.

MINI MODULAR MCB



Mini Modular MCB SP



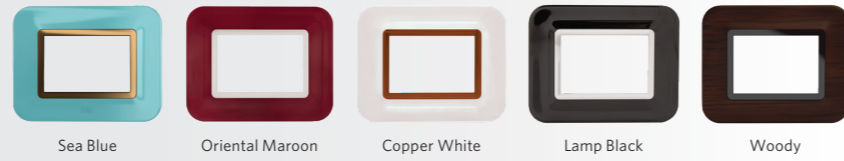
CODE	DESCRIPTION	HSN	MRP (₹)	PKG
WHITE BLACK SILVER			WHITE / BLACK / SILVER	
66151 66151B 66151S	ROMA 6A SP 'C' MINI MCB	8536	230 / 250 / 250	12
66152 66152B 66152S	ROMA 10A SP 'C' MINI MCB	8536	230 / 250 / 250	12
66153 66153B 66153S	ROMA 16A SP 'C' MINI MCB	8536	230 / 250 / 250	12
66154 66154B 66154S	ROMA 20A SP 'C' MINI MCB	8536	230 / 250 / 250	12
66155 66155B 66155S	ROMA 25A SP 'C' MINI MCB	8536	230 / 250 / 250	12
66156 66156B 66156S	ROMA 32A SP 'C' MINI MCB	8536	230 / 250 / 250	12

Mini Modular MCB DP



CODE	DESCRIPTION	HSN	MRP (₹)	PKG
WHITE BLACK SILVER			WHITE / BLACK / SILVER	
66157 66157B 66157S	ROMA 6A DP 'C' MINI MCB	8536	420 / 460 / 460	12
66158 66158B 66158S	ROMA 10A DP 'C' MINI MCB	8536	420 / 460 / 460	12
66159 66159B 66159S	ROMA 16A DP 'C' MINI MCB	8536	420 / 460 / 460	12
66160 66160B 66160S	ROMA 20A DP 'C' MINI MCB	8536	420 / 460 / 460	12
66161 66161B 66161S	ROMA 25A DP 'C' MINI MCB	8536	420 / 460 / 460	12
66162 66162B 66162S	ROMA 32A DP 'C' MINI MCB	8536	420 / 460 / 460	12

HUE



COLOUR PLATE FRAME	Module	1 Module	2 Module	3 Module	4 Module	6 Module	8 Module Horizontal	8 Module Square	9 Module Horizontal	12 Module	16 Module	18 Module
Sea Blue	Code	66801SBG-C	66802SBG-C	66803SBG-C	66804SBG-C	66806SBG-C	66808SBG-C	66809SBG-C	66812SBG-C	66816SBG-C	66818SBG-C	
	HSN	8538	8538	8538	8538	8538	8538	8538	8538	8538	8538	
	MRP	94	94	121	139	194	248	248	306	340	360	
Oriental Maroon	Code	66801OMS-C	66802OMS-C	66803OMS-C	66804OMS-C	66806OMS-C	66808OMS-C	66809OMS-C	66812OMS-C	66816OMS-C	66818OMS-C	
	HSN	8538	8538	8538	8538	8538	8538	8538	8538	8538	8538	
	MRP	94	94	121	139	194	248	248	306	340	360	
Copper White	Code	66801WHC-C	66802WHC-C	66803WHC-C	66804WHC-C	66806WHC-C	66808WHC-C	66809WHC-C	66812WHC-C	66816WHC-C	66818WHC-C	
	HSN	8538	8538	8538	8538	8538	8538	8538	8538	8538	8538	
	MRP	94	94	121	139	194	248	248	306	340	360	
Lamp Black	Code	66801LBC-C	66802LBC-C	66803LBC-C	66804LBC-C	66806LBC-C	66808LBC-C	66809LBC-C	66812LBC-C	66816LBC-C	66818LBC-C	
	HSN	8538	8538	8538	8538	8538	8538	8538	8538	8538	8538	
	MRP	94	94	121	139	194	248	248	306	340	360	
Woody	Code	66801WDB-C	66802WDB-C	66803WDB-C	66804WDB-C	66806WDB-C	66808WDB-C	66809WDB-C	66812WDB-C	66816WDB-C	66818WDB-C	
	HSN	8538	8538	8538	8538	8538	8538	8538	8538	8538	8538	
	MRP	185	185	239	275	387	497	497	611	681	720	
	PKG.	5	5	5	5	5	5	5	5	5	5	

Do not use * Hard Cleaning Agent* for cleaning purpose.

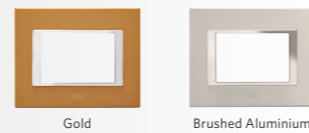
CLEAR



COLOUR PLATE FRAME	Module	1 Module	2 Module	3 Module	4 Module	6 Module	8 Module Horizontal	8 Module Square	12 Module	16 Module	18 Module
Pure White	Code	66901GPW-C	66902GPW-C	66903GPW-C	66904GPW-C	66906GPW-C	66908GPW-C	66988GPW-C	66912GPW-C	66916GPW-C	66918GPW-C
	HSN	8538	8538	8538	8538	8538	8538	8538	8538	8538	8538
	MRP	617	617	796	918	1314	1639	1639	2016	2292	2390
Space Black	Code	66901GSB-C	66902GSB-C	66903GSB-C	66904GSB-C	66906GSB-C	66908GSB-C	66988GSB-C	66912GSB-C	66916GSB-C	66918GSB-C
	HSN	8538	8538	8538	8538	8538	8538	8538	8538	8538	8538
	MRP	617	617	796	918	1314	1639	1639	2016	2292	2390
Aqua Blue	Code	66901GAB-C	66902GAB-C	66903GAB-C	66904GAB-C	66906GAB-C	66908GAB-C	66988GAB-C	66912GAB-C	66916GAB-C	66918GAB-C
	HSN	8538	8538	8538	8538	8538	8538	8538	8538	8538	8538
	MRP	617	617	796	918	1314	1639	1639	2016	2292	2390
	PKG.	5	5	5	5	5	5	5	5	5	5

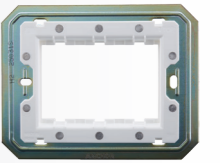
Do not use * Hard Cleaning Agent* for cleaning purpose.

SHEEN

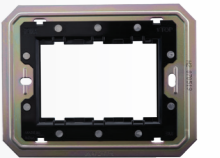


Metal PLATE FRAME	Module	1 Module	2 Module	3 Module	4 Module	6 Module	8 Module Horizontal	8 Module Square	12 Module	16 Module	18 Module
Gold	Code	66901GD-C	66902GD-C	66903GD-C	66904GD-C	66906GD-C	66908GD-C	66988GD-C	66912GD-C	66916GD-C	66918GD-C
	HSN	8538	8538	8538	8538	8538	8538	8538	8538	8538	8538
	MRP	684	684	793	931	1213	1368	1368	2010	2534	2634
Brushed Aluminium	Code	66901BA-C	66902BA-C	66903BA-C	66904BA-C	66906BA-C	66908BA-C	66988BA-C	66912BA-C	66916BA-C	66918BA-C
	HSN	8538	8538	8538	8538	8538	8538	8538	8538	8538	8538
	MRP	572	572	662	776	1012	1139	1139	1673	2120	2202
	PKG.	5	5	5	5	5	5	5	5	5	5

Do not use * Hard Cleaning Agent* for cleaning purpose.

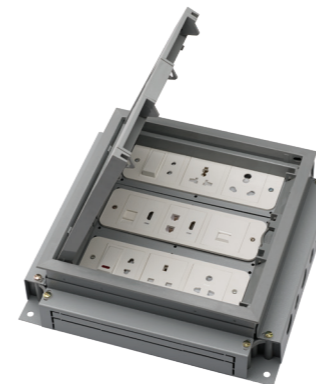


Base Frame for Collar Plates	Module	1 Module	2 Module	3 Module	4 Module	6 Module	8 Module Horizontal	8 Module Square	9 Module Horizontal	12 Module	16 Module	18 Module
	Code	66801C-I	66802C-I	66803C-I	66804C-I	66806C-I	66808C-I	66888C-I	66809C-I	66812C-I	66816C-I	66818C-I
	HSN	8538	8538	8538	8538	8538	8538	8538	8538	8538	8538	8538
	MRP	63	63	81	93	130	165	165	204	227	229	240



Base Frame for Glass & Metal Plates	Module	1 Module	2 Module	3 Module	4 Module	6 Module	8 Module Horizontal	8 Module Square	12 Module	16 Module	18 Module
	Code	66901MG-I	66902MG-I	66903MG-I	66904MG-I	66906MG-I	66908MG-I	66988MG-I	66912MG-I	66916MG-I	66918MG-I
	HSN	8538	8538	8538	8538	8538	8538	8538	8538	8538	8538
	MRP	63	63	81	93	130	165	165	227	229	240

FLOOR JUNCTION BOX



CODE	DESCRIPTION	HSN CODE	MRP (₹)	PKG
66770	18Module Floor Junction Box	8538	7100/-	1

FEATURES :

- Floor Junction Box with Powder coating
- Load Bearing capacity up to 1 Ton
- Suitable for Metal trunking and conduit cut outs of 20mm and 25 mm
- Pre-assembled with Roma Classic plates-without accessories.
- Overall Dimensions : 320(w) X 320(d) X 85(h)mm