

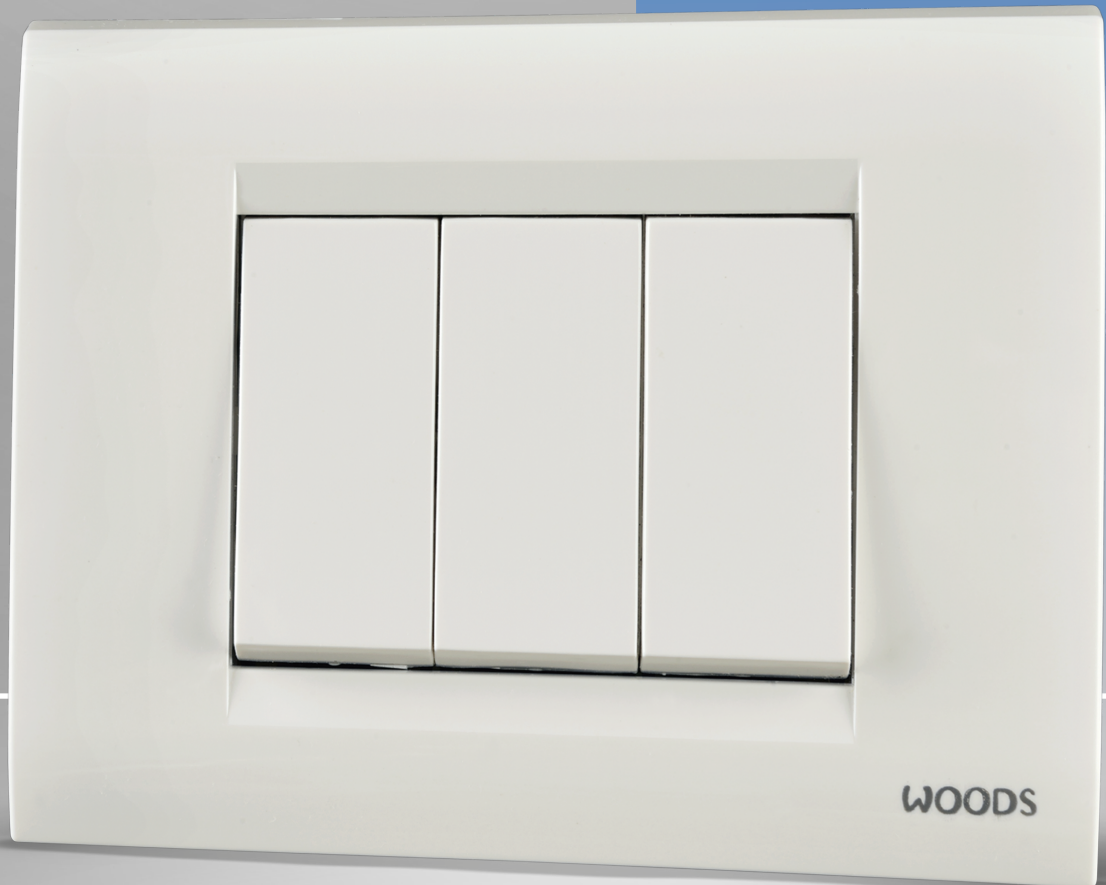
 **ANCHOR**

by **Panasonic**

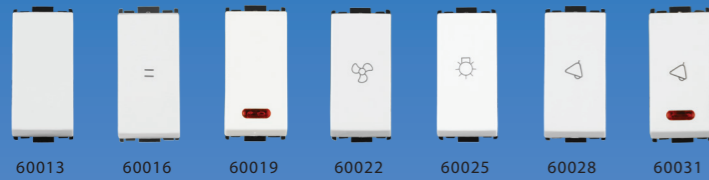


**WOODS**

**FOR THOSE  
WHO TURN  
CLASS INTO  
A STATEMENT**



**PRICELIST: APRIL 2020**



60013 60016 60019 60022 60025 60028 60031



60034 60037 60040 60043 60046



60058 60061 60064 60067 60070 60073



60085 60088



60100 60106 60109 / 60110 60112 60018



60154 60157



60166 60172 / 61865 60175 60178 60181

SWITCHES 10AX RATED, 240V~, SP



Code	Description	HSN	MRP	PKG
60013	10AX 1 Way Switch	8536	95	20
60016	10AX 2 Way Switch	8536	124	20
60019	10AX 1 Way Switch With Indicator	8536	128	20
60022	10AX 1 Way Switch With Fan Mark	8536	121	20
60025	10AX 1 Way Switch With Light Mark	8536	121	20
60028	10A Bell Push Switch	8536	125	20
60031	10A Bell Push Switch With Indicator	8536	141	20
60034	10AX 1 Way Switch Large	8536	131	10
60037	10AX 2 Way Switch Large	8536	146	10
60040	10AX 1 Way Switch With Indicator Large	8536	146	10
60043	10A Bell Push Switch Large	8536	141	10
60046	10A Bell Push Switch With Indicator Large	8536	163	10

SWITCHES 20AX RATED, 240V~, SP

Code	Description	HSN	MRP	PKG
60058	20A 1 Way Switch	8536	146	20
60061	20A 2 Way Switch	8536	163	20
60064	20A 1 Way Switch With Indicator	8536	167	20
60067	20A 1 Way Switch Large	8536	168	10
60070	20A 2 Way Switch Large	8536	187	10
60073	20A 1 Way Switch With Indicator Large	8536	196	10

POWER SWITCHES, 240V~

Code	Description	HSN	MRP	PKG
60085	25A S.P.1 Way Switch With Indicator	8536	215	20
60088	32A D.P. Main Switch With Indicator	8536	273	10

SOCKETS 6A / 10A / 13A / 20A, 240V~

Code	Description	HSN	MRP	PKG
60100	6A 2 Pin URO Socket	8536	103	20
60106	6A Multi Socket For 2 and 3 Pin Plug	8536	140	10
60109	10A/20A Twin Socket (Tested Up To 25A)	8536	224	10
60110	6A/16A Twin Socket, 2M	8536	247	10
60112	6A/10A/13A Combi Socket for all types of Pins	8536	247	10
60018	6A, 3 Pin Socket	8536	135	10

MOTOR STARTER SWITCH SINGLE PHASE, 240V~

Code	Description	HSN	MRP	PKG
60154	20A Motor Starter Switch	8536	472	10
60157	25A Motor Starter Switch	8536	472	10

FAN REGULATORS & DIMMERS, 240V~, 50Hz

Code	Description	HSN	MRP	PKG
60166	Fan Step Regulator Tiny EME 100W	8414	370	10
60172	Fan Step Regulator 100W	8414	498	10
61865	High speed fan Step regulator 100W	8414	516	10
60175	Mini 450 W Dimmer	8543	380	10
60178	Dimmer 650 W (For Incandescent Lamp)	8543	517	10
60181	Dimmer 1000 W (For Incandescent Lamp)	8543	680	10



60217 61859 61856 60220 60229 (Suitable for Amps, KRONE, Systimax Jacks) 61862 60265 60226



60232 CAT 5 60268 CAT 6 60241 60205 60208 60250 60244



60235 60271 60148 60282 60281 60256



60259 60223 60334 60253



For Outside The Room For Inside The Room Final Look Outside The Room 60637



60289 60202 Final Look Inside The Room



60298

SUPPORT MODULE

Code	Description	HSN	MRP	PKG
60217	Telephone Jack RJ11 Single With Shutter	8536	118	20
61859	RJ45 Computer Socket Cat 6	8536	481	20
61856	RJ45 Computer Socket Cat 5e	8536	399	10
60220	Telephone Jack RJ11 Double W/O Shutter	8536	171	10
60229	Adaptor only For At &T / Lucent Amps Avaya Cat5	8536	125	10
61862	RJ45 Receptor	8536	117	10
60265	Adaptor For At &T / Lucent Cat 6 With Shutter	8536	130	10
60226	Computer / Modem Jack RJ45 With Shutter	8536	219	10
60232	Computer / Modem Jack Cat 5 With Shutter	8536	975	10
60268	Computer Jack Cat 6 For At &T/ Lucent	8536	1084	10
60241	Fuse Unit For 16A Or 10A	8536	128	20
60205	Cord Outlet With Grip	8536	102	20
60208	TV Antena Outlet	8536	119	20
60250	Bell Indicator	8536	234	10
60244	Neon Indicator (Red)	8531	84	10
60235	Blank Plate Single	8538	27	20
60271	Buzzer	8531	151	10
60148	1000mA,5VDC, USB Charger,1M	8536	783	10
60281	2500mA,5VDC, USB Charger,2M	8536	1465	10
60282	2100mA,5VDC, USB Charger,2M	8536	788	10
60256	PIR Sensor (Wall Mounting ),12A,240~,50Hz Detector	8536	2673	4
60259	Compact Speake 3 w. rms	8536	349	10
60223	Volume Controller	8536	164	10
60334	Indicator / Night Lamp With LED (Long Life)	8536	229	10
60253	Down Light / Foot Light (LED - White) With Variable Shutter Regulates Light Output (3 Module White cool day Light)	8512	441	10

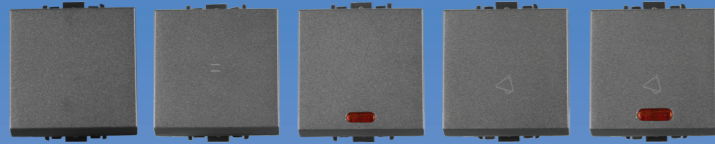
HOTEL & HOSPITALITY RANGE 240V~ (UNIT 5 NOS) DND/MMR

60637	Indicator marked Do Not DISTURB Indicator marked MAKE MY ROOM Bell Push (To operate from outside the room) + Switch marked Do Not DISTURB Switch marked MAKE MY ROOM (To operate from inside the room)	8536	1014	5
60289	32A D.P. Switch Operate by Key Ring Tag PC (With Frame & Front Plate) 2 module (complete Unit)	8536	537	5
60202	20A 30 Seconds Time Delay Electronic Key Card Unit ( Without frame & Plate) 3 module (supplied without card )	8536	1524	5
60298	Shaver Socket With Transformer 110/240V (with mounting frame & front plate) 4 module	8536	1635	5

\* 16A,20A,25A Switch not suggested for geyser load. Instead Motor Starter must be used.



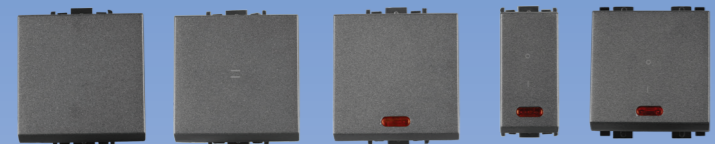
90013 90016 90019 90022 90025 90028 90031



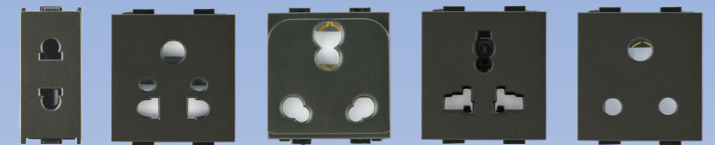
90034 90037 90040 90043 90046



90058 90061 90064



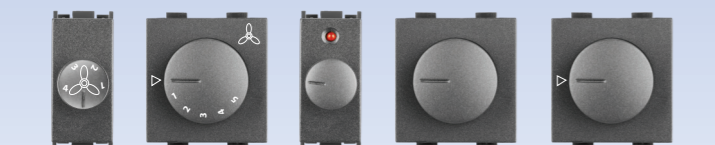
90067 90070 90073 90085 90088



60100 90106 90109 / 90110 90112 90018



90154 90157



90166 90172/91865 90175 90178 90181

SWITCHES 10AX RATED, 240V~, SP



Code	Description	HSN	MRP	PKG
90013	10AX 1 Way Switch	8536	99	20
90016	10AX 2 Way Switch	8536	141	20
90019	10AX 1 Way Switch With Indicator	8536	144	20
90022	10AX 1 Way Switch With Fan Mark	8536	138	20
90025	10AX 1 Way Switch With Light Mark	8536	138	20
90028	10A Bell Push Switch	8536	142	20
90031	10A Bell Push Switch With Indicator	8536	161	20
90034	10AX 1 Way Switch Large	8536	146	10
90037	10AX 2 Way Switch Large	8536	166	10
90040	10AX 1 Way Switch With Indicator Large	8536	166	10
90043	10A Bell Push Switch Large	8536	161	10
90046	10A Bell Push Switch With Indicator Large	8536	186	10

SWITCHES 20AX RATED, 240V~, SP

Code	Description	HSN	MRP	PKG
90058	20A 1 Way Switch	8536	167	20
90061	20A 2 Way Switch	8536	186	20
90064	20A 1 Way Switch With Indicator	8536	191	20
90067	20A 1 Way Switch Large	8536	189	10
90070	20A 2 Way Switch Large	8536	210	10
90073	20A 1 Way Switch With Indicator Large	8536	222	10

POWER SWITCHES, 240V~

Code	Description	HSN	MRP	PKG
90085	25A S.P. 1 Way Switch With Indicator	8536	240	20
90088	32A D.P. Main Switch With Indicator	8536	310	10

SOCKETS 6A / 10A / 13A / 20A, 240V~

Code	Description	HSN	MRP	PKG
90100	6A 2 Pin URO Socket	8536	116	20
90106	6A Multi Socket For 2 and 3 Pin Plug	8536	160	10
90109	10A/20A Twin Socket (Tested Up To 25A)	8536	255	10
90110	6A/16A Twin Socket (ISI)	8536	281	10
90112	6A/10A/13A Combi Socket For All types of Pins	8536	280	10
90018	6A, 3 Pin Socket ISI	8536	154	10

MOTOR STARTER SWITCH SINGLE PHASE, 240V~

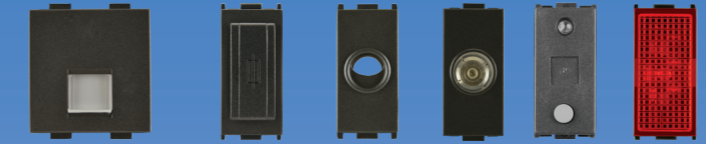
Code	Description	HSN	MRP	PKG
90154	20A Motor Starter Switch	8536	532	10
90157	25A Motor Starter Switch	8536	532	10

FAN REGULATORS & DIMMERS, 240V~, 50Hz

Code	Description	HSN	MRP	PKG
90166	Fan Step Regulator Tiny EME 100W ISI	8414	416	10
90172	Fan Step Regulator 100W ISI	8414	563	10
91865	High speed fan step regulator 100W	8414	581	10
90175	Mini 450 W Dimmer	8543	428	10
90178	Dimmer 650 W (For Incandescent Lamp)	8543	582	10
90181	Dimmer 1000 W (For Incandescent Lamp)	8543	768	10



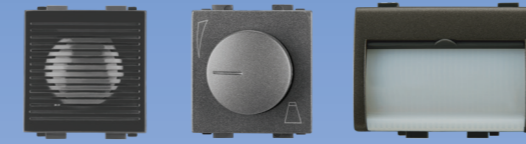
90217 91859 91856 90220 90229 91862 (Suitable for Amps, KRONE, Systemax Jacks) 90265 90226



90232 CAT 5 90268 CAT 6 90241 90205 90208 90250 90244



90235 90271 90148 90282 90281 90256



90259 90223 90253



For Outside The Room For Inside The Room Final Look Outside The Room



90289 90202 Final Look Inside The Room



90298

SUPPORT MODULE

Code	Description	HSN	MRP	PKG
90217	Telephone Jack RJ11 Single With Shutter	8536	134	20
91859	RJ45 Computer Socket Cat 6	8536	501	10
91856	RJ45 Computer Socket Cat 5e	8536	437	10
90220	Telephone Jack RJ11 Double W/O Shutter	8536	193	20
90229	Adaptor only For At &T / Lucent Amps Avaya Cat5	8536	141	10
91862	RJ 45 Receptor	8536	133	10
90265	Adaptor For At &T / Lucent Cat 6 With Shutter	8536	146	10
90226	Computer / Modem Jack RJ45 With Shutter	8536	250	10
90232	Computer / Modem Jack Cat 5 With Shutter	8536	1103	10
90268	Computer Jack Cat 6 For At &T/ Lucent	8536	1230	10
90241	Fuse Unit For 16A Or 10A	8536	146	20
90205	Cord Outlet With Grip	8536	113	20
90208	TV Antena Outlet	8536	134	20
90250	Bell Indicator	8536	263	10
90244	Neon Indicator RED	8531	95	10
90235	Blank Plate Single	8538	28	20
90271	Buzzer	8531	170	10
90148	1000mA, 5VDC, USB Charger, 1m	8536	875	10
90281	2500mA, 5VDC, USB Charger, 2M	8536	1544	10
90282	2100mA, 5VDC, USB Charger, 1M	8536	830	10
90256	PIR Sensor (Wall Mounting ), 12A, 240~, 50Hz	8536	2853	4
90259	Compact Speake 3.w rms	8536	394	10
90223	Volume Controller	8536	186	10
90253	Down Light / Foot Light (LED - White) With Variable Shutter Regulates Light Ouput (3 module white cool day light)	8414	496	10

HOTEL & HOSPITALITY RANGE

90637	Indicator marked Do Not DISTURB Indicator marked MAKE MY ROOM Bell Push (To operate from outside the room) + Switch marked Do Not DISTURB Switch marked MAKE MY ROOM (To operate from inside the room)	8536	1146	5
90289	32A D.P. Switch Operate by Key Ring Tag PC (With Frame & Front Plate) 2 module (complete Unit)	8536	605	5
90202	20A 30 Seconds Time Delay Electronics Key Card Unit ( Without frame & Plate) 3 module (Supplied without card)	8536	1720	5
90298	Shaver Socket With Transformer 110/240V (with mounting frame & front plate) 4 module	8536	1845	5

\* 16A, 20A, 25A Switch not suggested for geyser load. Instead Motor Starter must be used.

**STELLA** White  
Front Cover Plates with Base Frame



White

**Matrix** Glossy Finish  
Front Cover Plates with Base Frame



White - WH



Ivory-IV

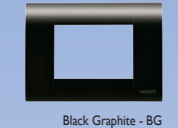
**Matrix** Metallic Finish  
Front Cover Plates with Base Frame



Twilight Grey - TG



Jet Silver - JS

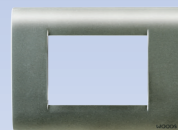


Black Graphite - BG

**Matrix** Hairline Finish  
Front Cover Plates with Base Frame



Hairline Brown - HW



Hairline Silver - HS

**Matrix** Natural Finish  
Front Cover Plates with Base Frame



Rose Wood - RW



American Cherry - AC

**GLOSSY FINISH**

GLOSSY FINISH	1 Module	2 Module	3 Module	4 Module	6 Module	8 Module (horizontal)	8 Module (rectangular)	9 Module (horizontal)	12 Module	16 Module	18 Module
WHITE	61700WH	61703WH	61706WH	61709WH	61712WH	61715WH	61718WH	61820WH	61721WH	61724WH	61727WH
HSN CODE	8538	8538	8538	8538	8538	8538	8538	8538	8538	8538	8538
MRP	84	85	105	121	174	217	217	267	277	310	325
PKG	10	10	10	10	10	10	5	10	5	5	5

**COLOUR GLOSSY FINISH**

COLOUR GLOSSY FINISH	1 Module	2 Module	3 Module	4 Module	6 Module	8 Module (horizontal)	8 Module (rectangular)	9 Module (horizontal)	12 Module	16 Module	18 Module
WHITE	60301WH	60304WH	60307WH	60310WH	60313WH	60316WH	60319WH	-	60322WH	60325WH	60328WH
IVORY	60301IV	60304IV	60307IV	60310IV	60313IV	60316IV	60319IV	-	60322IV	60325IV	60328IV
HSN CODE	8538	8538	8538	8538	8538	8538	8538	-	8538	8538	8538
MRP	79	80	99	114	164	204	204	-	261	292	306
PKG	10	10	10	10	10	10	5	-	5	5	5

**COLOUR METALLIC FINISH**

COLOUR METALLIC FINISH	1 Module	2 Module	3 Module	4 Module	6 Module	8 Module (horizontal)	8 Module (rectangular)	9 Module (horizontal)	12 Module	16 Module	18 Module
TWILIGHT GREY	60337TG	60340TG	60343TG	60346TG	60349TG	60352TG	60355TG	-	60358TG	60361TG	60364TG
JET SILVER	60337JS	60340JS	60343JS	60346JS	60349JS	60352JS	60355JS	-	60358JS	60361JS	60364JS
BLACK GRAPHIRE	60337BG	60340BG	60343BG	60346BG	60349BG	60352BG	60355BG	-	60358BG	60361BG	60364BG
HSN CODE	8538	8538	8538	8538	8538	8538	8538	-	8538	8538	8538
MRP	100	100	123	144	207	279	279	-	344	380	401
PKG	10	10	10	10	10	10	5	-	5	5	5

**COLOUR HAIRLINE FINISH**

COLOUR HAIRLINE FINISH	1 Module	2 Module	3 Module	4 Module	6 Module	8 Module (horizontal)	8 Module (rectangular)	9 Module (horizontal)	12 Module	16 Module	18 Module
HAIRLINE BROWN	60478HW	60481HW	60484HW	60487HW	60490HW	60493HW	60497HW	-	60499HW	60502HW	60331HW
HAIRLINE SILVER	60478HS	60481HS	60484HS	60487HS	60490HS	60493HS	60497HS	-	60499HS	60502HS	60331HS
HSN CODE	8538	8538	8538	8538	8538	8538	8538	-	8538	8538	8538
MRP	100	100	123	144	207	279	279	-	344	380	401
PKG	10	10	10	10	10	10	5	-	5	5	5

**COLOUR NATURAL FINISH**

COLOUR NATURAL FINISH	1 Module	2 Module	3 Module	4 Module	6 Module	8 Module (horizontal)	8 Module (rectangular)	9 Module (horizontal)	12 Module	16 Module	18 Module
ROSE WOOD	60373RW	60376RW	60379RW	60382RW	60385RW	60388RW	60391RW	-	60394RW	60397RW	60400RW
AMERICAN CHEERY	60373AC	60376AC	60379AC	60382AC	60385AC	60388AC	60391AC	-	60394AC	60397AC	60400AC
HSN CODE	8538	8538	8538	8538	8538	8538	8538	-	8538	8538	8538
MRP	100	100	123	144	207	279	279	-	344	380	401
PKG	10	10	10	10	10	10	5	-	5	5	5



**Panasonic Life Solutions India Pvt. Ltd.,**

3rd Floor, B Wing, I-Think Techno Campus, Pokharan Road No. 2, Thane (W), Thane - 400 607, Maharashtra.

Tel.: (022) 42228888 | WhatsApp: 9136028606 | Fax: (022) 42228884

Customer Care Cell: (022) 41304130

Email: [info@in.panasonic.com](mailto:info@in.panasonic.com) | [www.lsin.panasonic.com](http://www.lsin.panasonic.com)

Dealers Stamp