

# BCH MAXIMUM RETAIL PRICE

- Motor Starters
- Submersible Pump Starters
- Flat Cables for Submersible Pumps



## PRICE LIST

Effective: 5th July 2021



BCH  
ELECTRIC  
LIMITED



BHARTIA

BCH

## Modern facilities at Faridabad & Rudrapur

### Our Strengths

- ◆ State-of-the-art product development and R&D
- ◆ Modern manufacturing facilities
- ◆ Tool room with latest facilities
- ◆ Serving customers for five decades
- ◆ Presence in ~50 locations
- ◆ 650 channel partners
- ◆ ISO 14001:2015 and ISO 9001:2015 certified company

### Core Values

- ◆ Integrity
- ◆ Nurturing People
- ◆ Commitment to Customers
- ◆ Striving for Excellence
- ◆ Long Term Thinking

### Quality Policy

We as a member of BCH Electric Limited manufacturer of Low Voltage Switchgear & Controlgear products, are fully committed to provide Quality products and service in compliance with applicable Statutory and Regulatory requirements, to meet or exceed the customer need and expectations through -

- ◆ Continual improvement
- ◆ Involvement of employees
- ◆ Setting Quality objectives
- ◆ Training and development of employees

### Health & Safety Policy

We as a member of BCH Electric Limited manufacturer of Low Voltage Switchgear & Controlgear products, are fully committed to conduct Business in compliance to applicable Health & Safety legislation and regulation.

We shall continually improve through -

- ◆ Provide Safe & Healthy working conditions for the prevention of work related injury and ill health.
- ◆ Develop & maintain the Health & Safety objectives & targets and conduct health & safety programs for achieving the objectives and target.
- ◆ The prevention of accidents through the identification, assessment and elimination of workplace hazards and the promotion of health & safety awareness among its employees and contractors.
- ◆ Encourage employee's participation and consultation in matters affecting the health, safety and well being of our people and seek suggestions from our employees of ways in which health, safety & well being can be furthered.

The Health & safety policy is publicly available on request.

### Environmental Policy

We as a member of BCH Electric Limited manufacturer of Low Voltage Switchgear & Controlgear products, are fully committed to conduct Business in compliance to applicable Environmental legislation and regulation.

We shall continually improve through -

- ◆ Provide a framework for setting and reviewing environmental objectives and targets.
- ◆ Regularly review the impact of our activities on environment and strive to reduce the pollution/waste.
- ◆ Involve employees in our environmental program and provide necessary training to enable them to discharge their responsibilities towards environment management.
- ◆ Sustain the program of continual improvement in environment in environmental performance incorporating suitable metrics and monitoring.

The Environment policy is publicly available on request.



[www.bchindia.com](http://www.bchindia.com)







BCH

# Motor Starters & Submersible Pump Starters

## Motor Starters 01-05

- |   | Page No. |
|---|----------|
| ■ Shakti - DOL (Shakti WP & Shakti) & Auto DOL Starters       | 01       |
| ■ Shakti - Semi & Fully Automatic Star Delta Starters         | 01       |
| ■ Citation - DOL & Semi Automatic Star Delta Starters         | 02       |
| ■ Citation - Fully Automatic Star Delta Starters              | 03       |
| ■ Citation - FASD Starters with Electronic Over Current Relay | 03       |
| ■ Reversing DOL, DOL - 1-Ph & Industrial DOL                  | 04       |
| ■ Mini Manual 1-Ph & 3Ph, Manual Star-Delta & Wireless Modem  | 05       |

## Submersible Pump Starters 06-08

- |  |    |
|--|----|
| ■ 3-Ph SPS - Citation - DOL & SD   | 06 |
| ■ 3-Ph SPS - Shakti - DOL  | 06 |
| ■ 3-Ph SPS - Citation P - DOL & SD  | 07 |
| ■ 3-Ph SPS - Shakti P - DOL         | 07 |
| ■ 1-Ph SPS   | 08 |

## Oil Immersed Starters & Spares 09

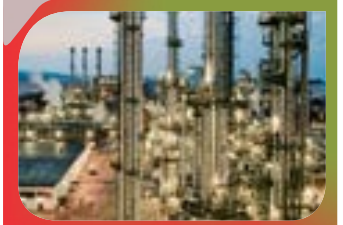
- |  |    |
|--|----|
| ■ Oil Immersed DOL & Star Delta Starters (SASD & FASD) | 09 |
|--|----|

## Others 10-13

- |  |    |
|--|----|
| ■ Contactors - (2P CPG, 4P NHD & 3P+1 Aux) & Citation Series | 10 |
| ■ Overload Relays - Citation 3P, WP 3P & 2P                  | 11 |
| ■ Spares for Motor Starters & Panels                         | 12 |
| ■ Spare Contact Kits, Coils & Carrier for Motor Starters     | 13 |
| ■ Spares for P series SPS & Dual Meter                       | 13 |
| ■ Coil Band Master Table                                     | 13 |

MCB / MCCB 14

Wires & Cables 15



# Motor Starters-Shakti.....



BCH

Shakti DOL Starter

## Shakti WP DOL Starter (190-400V AC Coil)

HSN CODE : 8536



| Cat Code (Shakti WP) | Overload Relay Range (A) | Contactors Type | Contactors rating | MRP [₹] | Cat Code (Shakti) | MRP [₹] |
|----------------------|--------------------------|-----------------|-------------------|---------|-------------------|---------|
| SAWPGZA              | 2.4 - 3.8                | Shakti          | 12 A              | 2825    |                   |         |
| SAWPHZA              | 3.8 - 6.0                | Shakti          | 12 A              | 2825    |                   |         |
| SAWPJZA              | 6.0 - 9.3                | Shakti          | 12 A              | 2825    |                   |         |
| SAWPGZ               | 2.4 - 3.8                | Shakti          | 20 A              | 2865    | SAGZ              | 3050    |
| SAWPHZ               | 3.8 - 6.0                | Shakti          | 20 A              | 2865    | SAHZ              | 3050    |
| SAWPJZ               | 6.0 - 9.3                | Shakti          | 20 A              | 2865    | SAJZ              | 3050    |
| SAWPKZ               | 8.9 - 13.5               | Shakti          | 20 A              | 2865    | SAKZ              | 3050    |
| SAWPLZ               | 13.2 - 20.0              | Shakti          | 20 A              | 3015    | SALZ              | 3330    |
| SAWPMZ               | 17.4 - 24.0              | Shakti          | 20 A              | 3165    | SAMZ              | 3460    |
| SAWPKZ-BT            | 8.9 - 13.5               | Shakti          | 20 A              | 3680    |                   |         |
| SAWPLZ-BT            | 13.2 - 20.0              | Shakti          | 20 A              | 3840    |                   |         |
| SAWPMZ-BT            | 17.4 - 24.0              | Shakti          | 20 A              | 4040    |                   |         |

Shakti WP DOL Starter  
(Big Enclosure)



## Shakti Auto-Start DOL Starter ( With 5-Sec delay Auto Switch )

3 Position Selection (Manual - Manual SPP - Auto)

HSN CODE : 8536

| Cat Code | Overload Relay Range (A) | Contactors Type | Contactors rating | MRP [₹] |
|----------|--------------------------|-----------------|-------------------|---------|
| ASXJZ    | 6.0 - 9.3                | Shakti          | 20 A              | 5035    |
| ASXKZ    | 8.9 - 13.5               | Shakti          | 20 A              | 5035    |
| ASXLZ    | 13.2 - 20.0              | Shakti          | 20 A              | 5280    |
| ASXMZ    | 17.4 - 24.0              | Shakti          | 20 A              | 5585    |

## Shakti Semi Automatic Star Delta Starter with 260-400V AC Coil

HSN CODE : 8536

| Cat Code     | Overload Relay Range (A) | Contactors Type | Contactors rating | MRP [₹] |
|--------------|--------------------------|-----------------|-------------------|---------|
| SASSHLEG     | 3.8 - 6.0                | Shakti          | 16 A              | 10190   |
| SASSJLEG     | 6.0 - 9.3                | Shakti          | 16 A              | 10190   |
| SASSKLEG     | 8.9 - 13.5               | Shakti          | 16 A              | 10190   |
| SASSKLEG/LOR | 13.2 - 20.0              | Shakti          | 16 A              | 10390   |
| SASSKLEG-M   | 17.4 - 24.0              | Shakti          | 16 A              | 10735   |

## Shakti Fully Automatic Star Delta Starter with 260-400V AC Coil & Electronic Timer

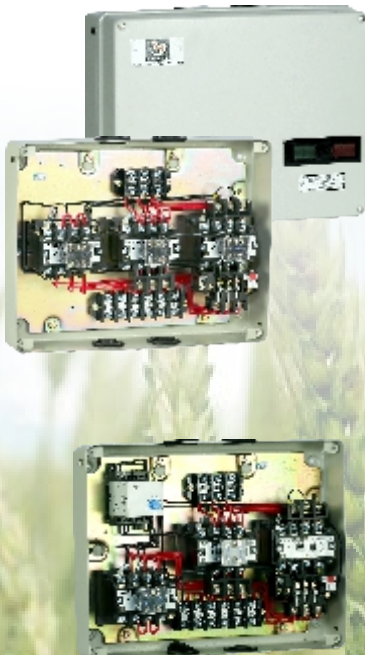
HSN CODE : 8536

| Cat Code     | Overload Relay Range (A) | Contactors Type | Contactors rating | MRP [₹] |
|--------------|--------------------------|-----------------|-------------------|---------|
| SASAHLEG     | 3.8 - 6.0                | Shakti          | 16 A              | 11265   |
| SASAJLEG     | 6.0 - 9.3                | Shakti          | 16 A              | 11265   |
| SASAKLEG     | 8.9 - 13.5               | Shakti          | 16 A              | 11265   |
| SASAKLEG/LOR | 13.2 - 20.0              | Shakti          | 16 A              | 11460   |
| SASAKLEG/MOR | 17.4 - 24.0              | Shakti          | 16 A              | 11785   |

For prices of interior, please contact sales.

For other Coil Voltages, kindly refer 'Coil Voltage Master Table' at page 13

Effective from 05.07.2021





# Motor Starters-Citation

## Citation DOL Motor Starter



BCH

HSN CODE : 8536

| Cat Code   | HP / KW at 3Ø, 415V, 50Hz | Overload Relay Range (A) | Contactor Type | Contactor Rating | MRP [₹] | Cat Code (Open Execution) | MRP [₹] |
|------------|---------------------------|--------------------------|----------------|------------------|---------|---------------------------|---------|
| NADLEN     | 0.5 / 0.37                | 0.72 - 1.14              | C00N           | 16 A             | 4120    | NADLENI                   | 4010    |
| NAELEN     | 0.75 / 0.55               | 1.07 - 1.70              | C00N           | 16 A             | 4120    | NAELENI                   | 4010    |
| NAFLEN     | 1 / 0.75                  | 1.58 - 2.50              | C00N           | 16 A             | 4120    | NAFLENI                   | 4010    |
| NAGLEN     | 2 / 1.5                   | 2.4 - 3.8                | C00N           | 16 A             | 4120    | NAGLENI                   | 4010    |
| NAHLEN     | 3 / 2.2                   | 3.8 - 6.0                | C00N           | 16 A             | 4120    | NAHLENI                   | 4010    |
| NAJLEN     | 5 / 3.7                   | 6.0 - 9.3                | C00N           | 16 A             | 4120    | NAJLENI                   | 4010    |
| NAKLEN     | 7.5 / 5.5                 | 8.9 - 13.5               | C00N           | 16 A             | 4120    | NAKLENI                   | 4010    |
| NALLEN     | 10 / 7.5                  | 13.2 - 20.0              | C00N           | 16 A             | 4365    | NALLENI                   | 4255    |
| NALLEN/MOR | 12.5 / 10                 | 17.4 - 24.0              | CP20           | 20 A             | 5235    | NALLENI/MOR               | 5110    |



## Citation DOL Motor Starter

### (A) with NHD Contactor

HSN CODE : 8536

| Cat Code   | HP / KW at 3Ø, 415V, 50Hz | Overload Relay Range (A) | Contactor Type | Contactor Rating | MRP [₹] |
|------------|---------------------------|--------------------------|----------------|------------------|---------|
| NAMLEN     | 15 / 11                   | 17.4 - 24.0              | N0N            | 25A              | 6910    |
| NAMLEN/NOR | 15 / 11                   | 22.0 - 30.0              | N0N            | 25A              | 7525    |
| NAPLEN/MOR | 15 / 11                   | 17.4 - 24.0              | N01N           | 32A              | 9340    |
| NAPLEN     | 20 / 15                   | 23.0 - 32.0              | N01N           | 32A              | 9730    |
| NANLEN     | 20 / 15                   | 22.0 - 30.0              | N1N            | 40A              | 10760   |
| NAQLEN     | 25 / 18.5                 | 26.0 - 40.0              | N1N            | 40A              | 10920   |
| NACT1LEN   | 25 / 18.5                 | 24.4 - 39.0              | N1N            | 40A              | 16510   |



### (B) 30 & 40 HP DOL Starter

| Cat Code             | HP / KW at 3Ø, 415V, 50Hz | Overload Relay Range (A) | Contactor Type | Contactor Rating | MRP [₹] |
|----------------------|---------------------------|--------------------------|----------------|------------------|---------|
| <b>New</b> CEHFRGDM* | 30 / 22                   | 36.0 - 52.0 (FR)         | Freedom        | 50A              | 18295   |
| NACT2LEDM            | 30 / 22                   | 37.6 - 60.0              | Citation D     | 40A              | 22660   |
| NACT2LEEM            | 40 / 30                   | 37.6 - 60.0              | Citation E     | 70A              | 29090   |

\*CEHFRGDM consist of Freedom Contactor & Freedom Overload Relay

## Citation Semi Automatic Star Delta Starter with NHD Contactor

HSN CODE : 8536

| Cat Code                 | HP / KW at 3Ø, 415V, 50Hz | Overload Relay Range (A) | Contactor Type | Contactor Rating | MRP [₹] |
|--------------------------|---------------------------|--------------------------|----------------|------------------|---------|
| NASSJLEN                 | 10 / 7.5                  | 6.0 - 9.3                | C00N           | 16A              | 11090   |
| NASSKLEN                 | 15 / 11                   | 8.9 - 13.5               | C00N           | 16A              | 11090   |
| NASSKLEN/LOR             | 15 / 11                   | 13.2 - 20.0              | C00N           | 16A              | 11430   |
| NASSLLEN                 | 20 / 15                   | 13.2 - 20.0              | N0N            | 25A              | 16835   |
| NASSMLEN                 | 25 / 18.5                 | 17.4 - 24.0              | N0N            | 25A              | 16940   |
| NASSPLEN                 | 25 / 18.5                 | 23.0 - 32.0              | N0N            | 25A              | 18295   |
| NASS01PLEN               | 35 / 26                   | 23.0 - 32.0              | N01N           | 32A              | 20880   |
| NASS01QLEN               | 40 / 30                   | 26.0 - 40.0              | N01N           | 32A              | 21065   |
| NASSNLEN                 | 35 / 26                   | 22.0 - 30.0              | N1N            | 40A              | 29725   |
| NASS01CT1LEN             | 40 / 30                   | 24.4 - 39.0              | N01N           | 32A              | 31350   |
| <b>New</b> NASSFRGCLEC4M | 40 / 30                   | 29.0 - 42.0 (FR)         | C4             | 32A              | 33190   |



# Motor Starters-Citation.....



## Citation Fully Automatic Star Delta Starter with NHD Contactor & Pneumatic Timers

HSN CODE : 8536

| Cat Code     | HP / KW at 3Ø, 415V, 50Hz | Overload Relay Range (A) | Contactor Type | Contactor Rating | MRP [₹] |
|--------------|---------------------------|--------------------------|----------------|------------------|---------|
| NASAGLEN     | 3 / 2.2                   | 2.4 - 3.8                | C00N           | 16A              | 15260   |
| NASAHLEN     | 5 / 3.7                   | 3.8 - 6.0                | C00N           | 16A              | 15260   |
| NASAJLEN     | 10 / 7.5                  | 6.0 - 9.3                | C00N           | 16A              | 15260   |
| NASAKLEN     | 15 / 11                   | 8.9 - 13.5               | C00N           | 16A              | 15260   |
| NASAKLEN/LOR | 15 / 11                   | 13.2 - 20.0              | C00N           | 16A              | 16000   |
| NASALLEN     | 20 / 15                   | 13.2 - 20.0              | N0N            | 25A              | 19280   |
| NASAMLEN     | 25 / 18.5                 | 17.4 - 24.0              | N0N            | 25A              | 19380   |
| NASAPLEN     | 30 / 22                   | 23.0 - 32.0              | N0N            | 25A              | 20185   |
| NASA01PLEN   | 35 / 26                   | 23.0 - 32.0              | N01N           | 32A              | 24155   |
| NASANLEN     | 35 / 26                   | 22.0 - 30.0              | N1N            | 40A              | 33875   |
| NASAQLEN     | 40 / 30                   | 26.0 - 40.0              | N1N            | 40A              | 34070   |
| NASACT1LEN   | 40 / 30                   | 24.4 - 39.0              | N1N            | 40A              | 38205   |

## Citation Fully Automatic Star Delta Starter with Citation M Contactor & Pneumatic Timers

HSN CODE : 8536



| Cat Code      | HP / KW at 3Ø, 415V, 50Hz | Overload Relay Range (A) | Contactor Type | Contactor Rating | MRP [₹] |
|---------------|---------------------------|--------------------------|----------------|------------------|---------|
| NASACT1LEDM   | 40 / 30                   | 24.4 - 39.0              | D              | 40A              | 46270   |
| NASACT2LEDM   | 50 / 37                   | 37.6 - 60.0              | D              | 40A              | 47005   |
| NASACT2LEEM   | 75 / 55                   | 37.6 - 60.0              | E              | 70A              | 80365   |
| NASACT3LEEM   | 85 / 65                   | 56.4 - 90.0              | E              | 70A              | 85475   |
| NASACT3LECM5M | 100 / 75                  | 56.4 - 90.0              | M-5            | 110A             | 110205  |
| NASACT4LECM5M | 135 / 100                 | 84.6 - 135.0             | M-5            | 110A             | 112675  |
| NASACT4LENM   | 150 / 110                 | 84.6 - 135.0             | N              | 140A             | 142765  |
| NASACT5LECM6M | 250 / 185                 | 131.6 - 210.0            | S              | 300A             | 212095  |
| NASACT6LECM6M | 375 / 280                 | 188.0 - 300.0            | S              | 300A             | 240000  |



## Fully Automatic Automatic Star Delta Starter with Citation M Contactor, Pneumatic Timer & Electronic Over Current Relay with Ammeter & Voltmeter

HSN CODE : 8536

| Cat Code          | HP / KW at 3Ø, 415V, 50Hz | EOCR Range (A)                           | Contactor Type (Citation) | Contactor Rating | MRP [₹] |
|-------------------|---------------------------|--|---------------------------|------------------|---------|
| NASASS60LEDM-P    | 50 / 37                   | 5-60 Amp                                 | D                         | 40A              | 54810   |
| NASASS60LEEM-P    | 75 / 55                   | 5-60 Amp                                 | E                         | 70A              | 85740   |
| NASA2CTD1CLEM5M-P | 100 / 75                  | 0.5-6 Amp<br>(with CT 100/5) (2CT model) | M-5                       | 110A             | 121430  |
| NASA2CT150LEM5M-P | 135 / 100                 | 0.5-6 Amp<br>(with CT 150/5) (2CT model) | M-5                       | 110A             | 125800  |

For other Coil Voltages, kindly refer 'Coil Voltage Master Table' at page 13



# Motor Starters-Citation.....

## DOL Reversing Starter

HSN CODE : 8536



| Cat Code | HP / KW at 3Ø, 415V, 50Hz | Overload Relay Range (A) | Contactor Type | Contactor Rating | MRP [₹] |
|----------|---------------------------|--------------------------|----------------|------------------|---------|
| NARFLEN  | 1/0.75                    | 1.58 - 2.50              | C00N           | 16 A             | 10250   |
| NARGLEN  | 2/1.5                     | 2.4 - 3.8                | C00N           | 16 A             | 10250   |
| NARHLEN  | 3/2.2                     | 3.8 - 6.0                | C00N           | 16 A             | 10250   |
| NARJLEN  | 5/3.7                     | 6.0 - 9.3                | C00N           | 16 A             | 10250   |
| NARKLEN  | 7.5/5.5                   | 8.9 - 13.5               | C00N           | 16 A             | 10250   |
| NARLLEN  | 10/7.5                    | 13.2 - 20.0              | N0N            | 25 A             | 14460   |
| NARMLLEN | 15/11                     | 17.4 - 24.0              | N1N            | 40 A             | 17500   |
| NARNLEN  | 20/15                     | 22.0 - 30.0              | N1N            | 40 A             | 19035   |

## 1-Phase DOL with 2P CPG Contactor & 2P Overload Relay

HSN CODE : 8536



| Cat Code  | HP / KW at 1Ø, 220V, 50Hz | Overload Relay Range (A) | Contactor Type | Contactor Rating | MRP [₹] |
|-----------|---------------------------|--------------------------|----------------|------------------|---------|
| NAAEBW-SP | -                         | 1.07 - 1.70              | 2P CPG         | 12A              | 2790    |
| NAAHBW-SP | 0.75 / 0.55               | 3.8 - 6.0                | 2P CPG         | 12A              | 2790    |
| NAHBW-SP  | 0.75 / 0.55               | 3.8 - 6.0                | 2P CPG         | 16A              | 2825    |
| NAAJBW-SP | 1 / 0.75                  | 6.0 - 9.3                | 2P CPG         | 12A              | 2790    |
| NAJBW-SP  | 1 / 0.75                  | 6.0 - 9.3                | 2P CPG         | 16A              | 2825    |
| NAKBW-SP  | 1.5 / 1.10                | 8.9 - 13.5               | 2P CPG         | 16A              | 2825    |
| NAALBW-SP | 2 / 1.5                   | 13.2 - 20.0              | 2P CPG         | 20A              | 2895    |
| NALBW-SP  | 2 / 1.5                   | 13.2 - 20.0              | 2P CPG         | 25A              | 3160    |
| NAMBW-SP  | 3 / 2.2                   | 17.4 - 24.0              | 2P CPG         | 25A              | 3210    |

# Motor Starters-Freedom.....

## Industrial DOL Starters with Freedom Contactor & Overload Relay

HSN CODE : 8536



| Cat Code | HP / KW at 3Ø, 415V, 50Hz | Overload Relay Range (A) | Contactor Type | Contactor Rating | MRP [₹] |
|----------|---------------------------|--------------------------|----------------|------------------|---------|
| CEBFM    | 0.5/0.37                  | 1.0-1.4                  | Freedom        | 9 A              | 3125    |
| CEBGM    | 0.75/0.55                 | 1.3-1.8                  | Freedom        | 9 A              | 3125    |
| CEBHM    | 1.0/0.75                  | 1.7-2.4                  | Freedom        | 9 A              | 3125    |
| CEBJM    | 1.5/1.1                   | 2.2-3.1                  | Freedom        | 9 A              | 3125    |
| CEBKM    | 2.0/1.5                   | 2.8-4.0                  | Freedom        | 9 A              | 3125    |
| CEBMM    | 3.0/2.2                   | 4.5-6.5                  | Freedom        | 9 A              | 3125    |
| CEBPM    | 5.0/3.7                   | 7.5-11                   | Freedom        | 9 A              | 3125    |
| CECPM    | 5.0/3.7                   | 7.5-11                   | Freedom        | 12 A             | 3205    |
| CECQM    | 7.5/5.5                   | 10-14                    | Freedom        | 12 A             | 3205    |
| CEDQM    | 7.5/5.5                   | 10-14                    | Freedom        | 18 A             | 4055    |
| CEDRM    | 10/7.5                    | 13-19                    | Freedom        | 18 A             | 4055    |

For other Coil Voltages, kindly refer 'Coil Voltage Master Table' at page 13

# Motor Starters-Mini



BCH

## 1- Phase Mini Manual Motor Starter upto 4HP (Surface Mounting)

HSN CODE : 8536

| Cat Code   | Recommended HP<br>1Ø, 240V | Overload Relay<br>Range (A) | MRP<br>[₹] | Cat Code<br>(with UV Coil) | MRP<br>[₹] |
|------------|----------------------------|-----------------------------|------------|----------------------------|------------|
| AMLE-10-SP | -                          | 0.23 - 0.47                 | 1445       | AMLEH-10-SP                | 1940       |
| AMLE-20-SP | -                          | 0.46 - 0.80                 | 1445       | AMLEH-20-SP                | 1940       |
| AMLE-30-SP | 1 / 8                      | 0.85 - 1.55                 | 1445       | AMLEH-30-SP                | 1940       |
| AMLE-40-SP | 1 / 6                      | 1.60 - 3.20                 | 1445       | AMLEH-40-SP                | 1940       |
| AMLE-50-SP | 0.5 / 0.75                 | 3.50 - 6.50                 | 1445       | AMLEH-50-SP                | 1940       |
| AMLE-60-SP | 1 to 2                     | 6.80 - 11.7                 | 1445       | AMLEH-60-SP                | 1940       |
| AMLE-70-SP | 2 to 3                     | 11.0 - 20.0                 | 1445       | AMLEH-70-SP                | 1940       |



For flush mounting replace 'E' by 'C' and reduce price by ₹ 50

## 3- Phase Mini Manual Motor Starter upto 10 HP (Surface Mounting)

HSN CODE : 8536

| Cat Code | Recommended HP<br>3Ø, 415V | Overload Relay<br>Range (A) | MRP<br>[₹] | Cat Code<br>(with UV Coil) | MRP<br>[₹] |
|----------|----------------------------|-----------------------------|------------|----------------------------|------------|
| AMLE-10  | -                          | 0.23 - 0.47                 | 1940       | AMLEN-10                   | 2230       |
| AMLE-20  | -                          | 0.46 - 0.80                 | 1940       | AMLEN-20                   | 2230       |
| AMLE-30  | 0.50 / 0.75                | 0.85 - 1.55                 | 1940       | AMLEN-30                   | 2230       |
| AMLE-40  | 1.00 / 1.50                | 1.60 - 3.20                 | 1940       | AMLEN-40                   | 2230       |
| AMLE-50  | 3.00                       | 3.50 - 6.50                 | 1940       | AMLEN-50                   | 2230       |
| AMLE-60  | 5.00                       | 6.80 - 11.7                 | 1940       | AMLEN-60                   | 2230       |
| AMLE-70  | 10.00                      | 11.0 - 20.0                 | 1940       | AMLEN-70                   | 2230       |



For flush mounting replace 'E' by 'C' and reduce price by ₹ 50

## Manual Star Delta Starter (with 260-400V AC Coil)

HSN CODE : 8536

| Cat Code | HP at<br>3Ø, 415V, 50Hz | Overload Relay<br>Range (A) | Contactur<br>Type | Contactur<br>Rating | MRP<br>[₹] |
|----------|-------------------------|-----------------------------|-------------------|---------------------|------------|
| HASSGLEG | 3 HP                    | 2.4 - 3.8                   | C00N              | 16 A                | 6145       |
| HASSHLEG | 5 HP                    | 3.8 - 6.0                   | C00N              | 16 A                | 6145       |
| HASSJLEG | 10 HP                   | 6.0 - 9.3                   | C00N              | 16 A                | 6145       |
| HASSKLEG | 15 HP                   | 8.9 - 13.5                  | N0N               | 25 A                | 6990       |

HSN CODE : 8538

|         |                                    |  |  |  |      |
|---------|------------------------------------|--|--|--|------|
| HASSW15 | Spare switch for 15 HP MSD Starter |  |  |  | 2625 |
|---------|------------------------------------|--|--|--|------|



# Wireless Modem

## Wireless Modem

(Compatible With The Complete BCH Starter Family)

HSN Code : 8517 62 30 (GST 18%)

| Cat Code | Description    | MRP<br>[₹] |
|----------|----------------|------------|
| BCH-GSM  | Wireless Modem | On request |



For other Coil Voltages, kindly refer 'Coil Voltage Master Table' at page 13





# Motor Starters-Citation & Shakti.....

## Citation Submersible Pump Starter with 3-Position Selection (with Auto Switch) with or without MCB option

DOL (3-Ph)

HSN CODE : 8536



| Overload Relay Range (A) | Contactor Type | Contactor Rating | DOL (without Short Circuit Protection) |         | Premium DOL (with Short Circuit Protection) MCB |         |
|--------------------------|----------------|------------------|--|---------|---|---------|
|                          |                |                  | Cat Code                               | MRP [₹] | Cat Code  | MRP [₹] |
| 1.58 - 2.50              | C00N           | 16 A             | CPEYNAFN*                              | 9065    | --  | --      |
| 2.4 - 3.8                | C00N           | 16 A             | CPEYNAGN*                              | 9065    | --  | --      |
| 3.8 - 6.0                | C00N           | 16 A             | CPEYNAHN*                              | 9065    | --  | --      |
| 6.0 - 9.3                | C00N           | 16 A             | CPEYNAJN*                              | 9065    | CPPYNAJN*                                       | 12875   |
| 8.9 - 13.5               | C00N           | 16 A             | CPEYNAKN*                              | 9065    | CPPYNAKN*                                       | 12875   |
| 13.2 - 20.0              | C00N           | 16 A             | CPEYNALN*                              | 9715    | CPPYNALN*                                       | 13775   |
| 17.4 - 24.0              | N0N            | 25 A             | CPEYNAMN*                              | 10550   | CPPYNAMN*                                       | 15235   |
| 23.0 - 32.0              | N01N           | 32 A             | CPEYNA01PN                             | 12015   | --  | --      |

## Citation Submersible Pump Starter with 3-Position Selection (with Auto Switch) with or without MCB / MCCB option

STAR DELTA (3-Ph)

HSN CODE : 8536



| Overload Relay Range (A) | Contactor Type | Contactor Rating | Star Delta (without Short Circuit Protection) |         | Premium Star Delta (with Short Circuit Protection) MCB or MCCB |         |
|--------------------------|----------------|------------------|---|---------|--|---------|
|                          |                |                  | Cat Code                                      | MRP [₹] | Cat Code   | MRP [₹] |
| 3.8 - 6.0                | C00N           | 16 A             | CPSDEYHN*                                     | 17485   | --   | --      |
| 6.0 - 9.3                | C00N           | 16 A             | CPSDEYJN*                                     | 17485   | CPSPDYJN*  | 21050   |
| 8.9 - 13.5               | C00N           | 16 A             | CPSDEYKN*                                     | 17485   | CPSPDYKN*  | 21050   |
| <b>New</b> 13.2 - 20.0   | C00N           | 16 A             | CPSDEYLN-C00                                  | 17795   | --   | --      |
| <b>New</b> 17.4 - 24.0   | CP20           | 20 A             | CPSDEYMN-CP20                                 | 19555   | --   | --      |
| 13.2 - 20.0              | N0N            | 25 A             | CPSDEYLN                                      | 21035   | CPSPDYLN   | 25130   |
| 17.4 - 24.0              | N0N            | 25 A             | CPSDEYMN                                      | 22160   | CPSPDYMN   | 27155   |
| 23.0 - 32.0              | N01N           | 32 A             | CPSDEY01PN                                    | 27800   | --   | --      |
| 22.0 - 30.0              | N1N            | 40 A             | CPSDEYNN                                      | 34630   | CPSPDYNN   | 38245   |
| 26.0 - 40.0              | N1N            | 40 A             | CPSDEYQN                                      | 35140   | CPSPDYQN   | 38780   |
| 24.4 - 39.0              | N1N            | 40 A             | CPSDEYCT1N                                    | 37700   | CPSPDYCT1N   | 44720   |
| 37.6 - 60.0              | Citation E     | 70 A             | CPSDEYCT2M                                    | 61295   | CPSPDYCT2M   | 69000   |
| 56.4 - 90.0              | Citation E     | 70 A             | CPSDEYECT3M                                   | 66695   | --   | --      |
| 56.4 - 90.0              | Citation M-5   | 110 A            | CPSDEYCT3M                                    | 86245   | CPSPDYCT3M   | 90945   |
| 84.6 - 135.0             | Citation M-5   | 110 A            | CPSDEYCT4M                                    | 88970   | CPSPDYCT4M   | 96740   |



## Shakti DOL Submersible Pump Starter (with Auto Switch) 3-Ph

HSN CODE : 8536



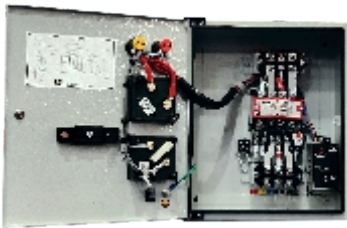
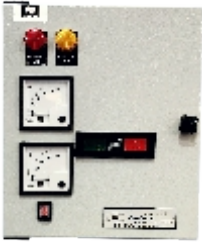
| Overload Relay Range (A) | Description | Contactor Type | Contactor Rating | 3 Position Selection (Manual - Manual SPP - Auto) |         |
|--------------------------|-------------|----------------|------------------|---|---------|
|                          |             |                |                  | Cat Code  | MRP [₹] |
| 2.4 - 3.8                | Shakti      | Shakti         | 20 A             | CPEYSAGZ  | 8515    |
| 3.8 - 6.0                | Shakti      | Shakti         | 20 A             | CPEYSAHZ  | 8515    |
| 6.0 - 9.3                | Shakti      | Shakti         | 20 A             | CPEYSAJZ  | 8515    |
| 8.9 - 13.5               | Shakti      | Shakti         | 20 A             | CPEYSAKZ  | 8515    |
| 13.2 - 20.0              | Shakti      | Shakti         | 20 A             | CPEYSALZ  | 9420    |
| 17.4 - 24.0              | Shakti      | Shakti         | 20 A             | CPEYSAMZ  | 9915    |

For 380 - 415 V coil voltage replace suffix "Z" with "N" in the Cat. Code

For Auto switch with 5 min time delay option, kindly contact nearest sales office

For other Coil Voltages, kindly refer 'Coil Voltage Master Table' at page 13

# Motor Starters - Citation P & Shakti P .....



## Citation Submersible Pump Starter



DOL (3-Ph)

HSN CODE : 8536

| Type          | Overload Relay Range (A) | Contactor Rating | Cat Code   | Coil   | MRP [₹] |
|---------------|--------------------------|------------------|------------|--------|---------|
| CITATION P10  | 1.58 - 2.5               | 16 A             | CPEYNBF*   | N & G  | 8800    |
| CITATION P10  | 2.4 - 3.8                | 16 A             | CPEYNBG*   | N & G  | 8800    |
| CITATION P10  | 3.8 - 6                  | 16 A             | CPEYNBH*   | N & G  | 8800    |
| CITATION P10  | 6 - 9.3                  | 16 A             | CPEYNBJ*   | N & G  | 8800    |
| CITATION P10  | 8.9 - 13.5               | 16 A             | CPEYNBK*   | N & G  | 8800    |
| CITATION P10  | 13.2 - 20                | 16 A             | CPEYNBL*   | N & G  | 9060    |
| CITATION P10B | 13.2 - 20                | 20 A             | CPEYNBL2*  | N & G  | 9240    |
| CITATION P10H | 17.4 - 24                | 25 A             | CPEYNBM*   | N & G  | 9590    |
| CITATION P11  | 23 - 32                  | 32 A             | CPEYNBP01* | N & WB | 10725   |
| CITATION P11  | 26 - 40                  | 32 A             | CPEYNBQ01* | N & WB | 10870   |
| CITATION P12  | 26 - 40                  | 40 A             | CPEYNBQ*   | N & WB | 11190   |

\*For spare Contactor refer page 10

## Citation Submersible Pump Starter



STAR DELTA (3-Ph)

HSN CODE : 8536

| Type          | Overload Relay Range (A) | Contactor Rating | Cat Code     | Coil      | MRP [₹] |
|---------------|--------------------------|------------------|--------------|-----------|---------|
| CITATION P20  | 6 - 9.3                  | 16 A             | CPSDEYNBJ*   | N & G     | 16985   |
| CITATION P20  | 8.9 - 13.5               | 16 A             | CPSDEYNBK*   | N & G     | 16985   |
| CITATION P20  | 13.2 - 20                | 16 A             | CPSDEYNBL*   | N & G     | 17145   |
| CITATION P20A | 13.2 - 20                | 20 A             | CPSDEYNBL2*  | N, LV & G | 18090   |
| CITATION P20A | 17.4 - 24                | 20 A             | CPSDEYNBM2*  | N, LV & G | 18190   |
| CITATION P20B | 23 - 32                  | 25 A             | CPSDEYNBP*   | N, LV & G | 20975   |
| CITATION P20H | 22 - 30                  | 32 A             | CPSDEYNB01N* | N & WB    | 21540   |
| CITATION P20H | 23 - 32                  | 32 A             | CPSDEYNB01P* | N & WB    | 21555   |
| CITATION P20H | 26 - 40                  | 32 A             | CPSDEYNB01Q* | N & WB    | 21775   |
| CITATION P21  | 26 - 40                  | 40 A             | CPSDEYNBQ*   | N & WB    | 26490   |

\*For spare Contactor refer page 10

## Shakti DOL Submersible Pump Starter (3-Ph)



HSN CODE : 8536

| Type       | Overload Relay Range (A) | Contactor Rating | Cat Code | Coil       | MRP [₹] |
|------------|--------------------------|------------------|----------|------------|---------|
| SHAKTI P6  | 1.58 - 2.5               | 12 A             | CPEYSBF* | Z & N & MB | 7880    |
| SHAKTI P6  | 2.4 - 3.8                | 12 A             | CPEYSBG* | Z & N & MB | 7880    |
| SHAKTI P6  | 3.8 - 6                  | 12 A             | CPEYSBH* | Z & N & MB | 7880    |
| SHAKTI P6  | 6 - 9.3                  | 12 A             | CPEYSBJ* | Z & N & MB | 7880    |
| SHAKTI P10 | 8.9 - 13.5               | 20 A             | CPEYSBK* | Z & N & MB | 8080    |
| SHAKTI P10 | 13.2 - 20                | 20 A             | CPEYSBL* | Z & N & MB | 8780    |
| SHAKTI P10 | 17.4 - 24                | 20 A             | CPEYSBM* | Z & N & MB | 9240    |

\*For spare Contactor refer page 12

For other Coil Voltages, kindly refer 'Coil Voltage Master Table' at page 13

Effective from 05.07.2021





# Motor Starters - 1-Ph SPS

**BCH**

## 1-Phase SPS With 2P Contactor + Overload Relay (Ammeter + Voltmeter) with 160-220V AC Coil

**HSN CODE : 8536**


| HP at 1Ø, 220V, 50Hz | Overload Relay Range (A) | Contactor Rating | Cat Code           | Run Capacitor (mfd) | Start Capacitor (mfd) | MRP [₹]     |      |
|----------------------|--------------------------|------------------|--------------------|---------------------|-----------------------|-------------|------|
| 0.5 / 0.75 HP        | 3.8 - 6.0                | 12 Amp           | CPNSHBW-SPE        | 25                  | 80/100                | 4895        |      |
|                      |                          |                  | CPNSHBW-SP         | 25                  | 80/100                | 4995        |      |
| 0.5 / 0.75 HP        | 3.8 - 6.0                | 16 Amp           | CPNSHBW-SP(RC36)   | 36                  | 80/100                | 5035        |      |
|                      |                          |                  | CPNSHBW-RC25-SC120 | 25                  | 100/120               | 5155        |      |
|                      |                          |                  | CPNSHBW-RC30-SC200 | 30                  | 150/200               | 5830        |      |
|                      |                          |                  | CPNSJBW-SPE        | 36                  | 100/120               | 5010        |      |
| 1 HP                 | 6.0 - 9.3                | 12 Amp           | CPNSJBW-SP         | 36                  | 100/120               | 5160        |      |
|                      |                          |                  | CPNSJBW-RC20SC100  | 20                  | 80/100                | 5125        |      |
|                      |                          |                  | CPNSJBW-RC25SC100  | 25                  | 80/100                | 5200        |      |
|                      |                          |                  | CPNSJBW-RC50SC100  | 50                  | 80/100                | 5355        |      |
|                      |                          |                  | 16 Amp             | CPNSJBW-RC60SC150   | 60                    | 120/150     | 5600 |
|                      |                          |                  |                    | CPNSJBW-RC72SC150   | 72                    | 120/150     | 5720 |
|                      |                          |                  |                    | CPNSJBW-SP(RC30)    | 30                    | 100/120     | 5200 |
|                      |                          |                  |                    | CPNSJBW-SP(RC50)    | 50                    | 100/120     | 5200 |
| 1.5 HP               | 8.9 - 13.5               | 12 Amp           | CPNSJBW-SP(SC100)  | 36                  | 80/100                | 5550        |      |
|                      |                          |                  | CPNSJBW-RC36-SC200 | 36                  | 150/200               | 5940        |      |
|                      |                          |                  | 16 Amp             | CPNSKBW-SPE         | 50                    | 120/150     | 5480 |
|                      |                          |                  |                    | CPNSKBW-SP          | 50                    | 120/150     | 5600 |
|                      |                          |                  | 16 Amp             | CPNSKBW-RC30SC120   | 30                    | 100/120     | 5515 |
|                      |                          |                  |                    | CPNSKBW-RC36SC120   | 36                    | 100/120     | 5535 |
|                      |                          |                  |                    | CPNSKBW-SP(RC36)    | 36                    | 120/150     | 5575 |
|                      |                          |                  |                    | CPNSKBW-SP(RC72)    | 36+36                 | 120/150     | 5750 |
| 2 HP                 | 13.2 - 20.0              | 16 Amp           | CPNSKBW-RC50-SC200 | 50                  | 150/200               | 6130        |      |
|                      |                          |                  | CPNSLBW-SP         | 72                  | 150/200               | 5995        |      |
|                      |                          |                  | CPNSLBW-SP (2RC36) | 36+36               | 150/200               | 6085        |      |
|                      |                          |                  | CPNSLBW-RC100SC150 | 100                 | 120/150               | 6040        |      |
|                      |                          |                  | CPNSLBW-RC90SC150  | 45+45               | 120/150               | 6040        |      |
|                      |                          |                  | CPNSLBW-SP(SC150)  | 72                  | 120/150               | 6155        |      |
|                      |                          |                  | CPNSLBW-RC72-SC250 | 72                  | 200/250               | 6495        |      |
|                      |                          |                  | 3 HP               | 17.4 - 24.0         | 20 Amp                | CPNSMBW-SPE | 100  |
| CPNSMBW-SP           | 100                      | 200/250          |                    |                     |                       | 6795        |      |
| 25 Amp               | CPNSMBW-SP(2RC50)        | 50+50            |                    |                     |                       | 200/250     | 6920 |
|                      | CPNSNBW-SP               | 100              |                    |                     |                       | 200/250     | 7065 |
| 5 HP                 | 23.0 - 32.0              | 32 A & 12 A      | CPNSNBW-SP(2RC50)  | 50+50               | 200/250               | 7265        |      |
|                      |                          |                  | 40 A & 16 A        | CPNSPBW-SPE         | 100+50                | 200/250     | 9200 |
|                      |                          |                  |                    | CPNSPBW-SP          | 100+50                | 200/250     | 9520 |
|                      |                          |                  | CPNSPBW-SP(3RC50)  | 50+50+50            | 200/250               | 9750        |      |

\*Suffix "D" in Cat Code for Dry Run Protection panel (only Extra Terminal is provided to connect Dry Run unit)

\*\*For 170-240V coil, replace "BW" in above cat code with "BBW"

## 1-Phase SPS for Oil Filled Pumps (With Ammeter + Voltmeter)

**HSN CODE : 8536**


| Cat Code      | HP at 1Ø, 220V, 50Hz | Relay Range (A) | Run Capacitor (mfd) | MRP [₹] |
|---------------|----------------------|-----------------|---------------------|---------|
| CPPM50-25-SP  | 0.5 / 0.75 HP        | 3.5 - 6.5       | 25                  | 3525    |
| CPPM50H-25-SP | 0.5 / 0.75 HP        | 3.5 - 6.5       | 25                  | 4010    |
| CPPM60-25-SP  | 1 HP                 | 6.8 - 11.7      | 25                  | 3550    |
| CPPM60H-36-SP | 1 HP                 | 6.8 - 11.7      | 36                  | 4035    |
| CPPM60-50-SP  | 1.5 HP               | 6.8 - 11.7      | 50                  | 3735    |
| CPPM60H-50-SP | 1.5 HP               | 6.8 - 11.7      | 50                  | 4250    |
| CPPM70-50-SP  | 2 HP                 | 11.0 - 20.0     | 50                  | 3795    |
| CPPM70H-50-SP | 2 HP                 | 11.0 - 20.0     | 50                  | 4310    |

Effective from 05.07.2021

For other Coil Voltages, kindly refer 'Coil Voltage Master Table' at page 13

# Motor Starters-Oil Immersed

## DOL Starter - 3 Phase

HSN CODE : 8536

| Cat. Code | Overload Relay Range (A) | HRC Fuse Rating (EE Type) (max) | MRP [₹] |
|-----------|--------------------------|---------------------------------|---------|
| OISWPGT   | 2.4 - 3.8                | 16A                             | 3660    |
| OISWPHT   | 3.8 - 6.0                | 20A                             | 3660    |
| OISWPJT   | 6.0 - 9.3                | 25A                             | 3660    |
| OISWPKT   | 8.9 - 13.5               | 36A                             | 3660    |
| OISWPLT   | 13.2 - 20.0              | 50A                             | 3730    |
| OISWPMT   | 17.4 - 24.0              | 63A                             | 4040    |

Note : The last alphabet in the Cat No. indicates coil voltage : N-380-415VAC ; T-220-400VAC ; Y-240-400VAC

## Star Delta Starter - Fully Automatic

HSN CODE : 8536

| Cat. Code | Overload Relay Range (A) | HRC Fuse Rating (EE Type) (max) | MRP [₹] |
|-----------|--------------------------|---------------------------------|---------|
| OISDAWPJ* | 6.0 - 9.3                | 20A                             | 10580   |
| OISDAWPK* | 8.9 - 13.5               | 32A                             | 10580   |
| OISDAWPL* | 13.2 - 20.0              | 35A                             | 10580   |
| OISDAWPM* | 17.4 - 24.0              | 50A                             | 11315   |
| OISDAWPP* | 23.0 - 32.0              | 63A                             | 11850   |



## Star Delta Starter - Semi Automatic

HSN CODE : 8536

| Cat. Code | Overload Relay Range (A) | HRC Fuse Rating (EE Type) (max) | MRP [₹] |
|-----------|--------------------------|---------------------------------|---------|
| OISDSWPJ* | 6.0 - 9.3                | 20A                             | 9500    |
| OISDSWPK* | 8.9 - 13.5               | 32A                             | 9500    |
| OISDSWPL* | 13.2 - 20.0              | 35A                             | 9500    |
| OISDSWPM* | 17.4 - 24.0              | 50A                             | 10210   |
| OISDSWPP* | 23.0 - 32.0              | 63A                             | 10715   |

## Star Delta Starter - Fully Automatic with Auto Unit SPP & 3 Position Auto Manual Switch

HSN CODE : 8536

| Cat. Code | Overload Relay Range (A) | HRC Fuse Rating (EE Type) (max) | MRP [₹] |
|-----------|--------------------------|---------------------------------|---------|
| OISDYWPJ* | 6.0 - 9.3                | 20A                             | 12385   |
| OISDYWPK* | 8.9 - 13.5               | 32A                             | 12385   |
| OISDYWPL* | 13.2 - 20.0              | 35A                             | 12385   |
| OISDYWPM* | 17.4 - 24.0              | 50A                             | 13170   |
| OISDYWPP* | 23.0 - 32.0              | 63A                             | 13780   |

## Star Delta Starter - Fully Automatic with Ammeter & Voltmeter

HSN CODE : 8536

| Cat. Code  | Overload Relay Range (A) | HRC Fuse Rating (EE Type) (max) | MRP [₹] |
|------------|--------------------------|---------------------------------|---------|
| OISDPYWPL* | 13.2 - 20.0              | 35 A                            | 15225   |
| OISDPYWPM* | 17.4 - 24.0              | 50 A                            | 16020   |
| OISDPYWPP* | 23.0 - 32.0              | 63 A                            | 16755   |

'N' for 380-415VAC coil & 'Y' for 240-400VAC coil

## Spares for Oil Starter

HSN CODE : 8538

| Description  | Cat No.                   | MRP [₹]  |     |
|--|---------------------------|----------|-----|
| Contact kit without coil for DOL - Power & Auxiliary contacts (set of fix contact, moving contact, hex screws, spring washer, spring clip, spring cap, contact spring) | OCK                       | 480      |     |
| Power kit without coil for all 3 contactor of star delta starter (fix contact, moving contact, hex screw, spring washer, spring clip, spring cap, contact spring )     | Upto L Relay - OCKSD20    | 1185     |     |
|  | M, P Relay OCKSD30        | 1370     |     |
| Auxiliary Contact Kit set for Star Delta Starter   | Upto L Relay - OCKSDAUX20 | 315      |     |
|  | M, P Relay OCKSDAUX30     | 315      |     |
| Coil -Main & Delta Contactor   | 220-400V                  | OCT      | 560 |
|  | 240-400V                  | OCY      | 560 |
|  | 380-415V                  | OCN      | 560 |
| Coil -Star Contactor   | 220-400V                  | OCT-STAR | 355 |
|  | 240-400V                  | OCY-STAR | 355 |
|  | 380-415V                  | OCN-STAR | 355 |
| ON-Push Button   | OPB-ON                    | 150      |     |
| OFF-Push Button  | OPB-OFF                   | 150      |     |
| Incoming Mounting KIT for 20A  | OCTKSD20                  | 160      |     |
| Incoming Mounting KIT for 30A  | OCTKSD30                  | 225      |     |



# Contactors



## 'NHD' Series 2 Pole Contactor

HSN CODE : 8536

| AC# Rating at 240 V AC |          | Cat Code | MRP [₹] |
|------------------------|----------|----------|---------|
| AC-1 (A)               | AC-3 (A) |          |         |
| 20                     | 12       | CPG212*  | 1320    |
| 25                     | 16       | CPG216*  | 1500    |
| 35                     | 20       | CPG220*  | 1970    |
| 40                     | 25       | CPG225*  | 2220    |
| 40                     | 32       | CPG232*  | 2545    |
| 50                     | 40       | CPG240*  | 2730    |

## 'NHD' Series 4 Pole Contactor

HSN CODE : 8536

| Size | AC1 (A) | AC3 Rating at 415 V AC |      |      | Cat Code | MRP [₹] |
|------|---------|------------------------|------|------|----------|---------|
|      |         | (A)                    | HP   | KW   |          |         |
| CP12 | 20      | 12                     | 7.5  | 5.5  | CP12*    | 2490    |
| 00   | 20      | 16                     | 10   | 7.5  | C00N*    | 2820    |
| CP20 | 30      | 20                     | 12.5 | 9.3  | CP20*    | 3620    |
| 0    | 32      | 25                     | 15   | 11   | N0N*     | 5040    |
| 01   | 40      | 32                     | 20   | 15   | N01N*    | 6360    |
| 1    | 50      | 40                     | 25   | 18.5 | N1N*     | 7740    |

HSN CODE : 8538

|                                    |          |         |     |
|------------------------------------|----------|---------|-----|
| Auxiliary Contact Blocks - NHD/CPG | 1 NO     | 001CB10 | 285 |
| Auxiliary Contact Blocks - NHD/CPG | 1 NO+1NC | 001CB11 | 340 |
| Auxiliary Contact Blocks - NHD/CPG | 2NO      | 001CB20 | 340 |
| Auxiliary Contact Blocks - NHD/CPG | 2NC      | 001CB02 | 340 |

**New**

## 'NHD' Series 3 Pole + 1 Aux Contactor\*

HSN CODE : 8536

| Size | AC1 (A) | AC3 Rating at 415 V |      |      | Cat Code | MRP [₹] |
|------|---------|---------------------|------|------|----------|---------|
|      |         | (A)                 | HP   | KW   |          |         |
| CA12 | 20      | 12                  | 7.5  | 5.5  | CA12N ■  | 2210    |
| CA16 | 20      | 16                  | 10   | 7.5  | CA16N ■  | 2520    |
| CA20 | 30      | 20                  | 12.5 | 9.3  | CA20N ■  | 3205    |
| NA25 | 32      | 25                  | 15   | 11   | NA25N ■  | 4465    |
| NA32 | 40      | 32                  | 20   | 15   | NA32N ■  | 5630    |
| NA40 | 50      | 40                  | 25   | 18.5 | NA40N ■  | 6720    |

\*Auxiliary contact is at left side in 3P+1 Aux Contactor



## Citation Series 3 Pole Contactor

HSN CODE : 8536

| Contactor Size | AC# Rating at 415 V |         | Cat Code  | MRP [₹] | Cat Code  | MRP [₹] |
|----------------|---------------------|---------|-----------|---------|-----------|---------|
|                | AC-3 (A)            | HP / KW |           |         |           |         |
| D              | 40                  | 30 / 22 | MC10DN22* | 9290    | MC10DN11* | 8180    |
| E              | 70                  | 50 / 37 | MC10EN22* | 16650   | MC10EN11* | 16310   |

HSN CODE : 8536

| Contactor Size | AC# Rating at 415 V |          |           | Aux. Contact | Cat Code   | MRP [₹] |
|----------------|---------------------|----------|-----------|--------------|------------|---------|
|                | AC-1 (A)            | AC-3 (A) | HP / KW   |              |            |         |
| M-5            | 150                 | 110      | 80 / 60   | 1 NO + 1 NC  | MCE15MN3*5 | 21090   |
| N              | 300                 | 140      | 100 / 75  | 1 NO + 1 NC  | MCE15NN3*7 | 31460   |
| S              | 315                 | 300      | 220 / 160 | 1 NO + 1 NC  | MCE15SN3*7 | 49360   |

For other Coil Voltages, kindly refer 'Coil Voltage Master Table' at page 13



# Overload Relay for Starters

## Citation-M Overload Relays ( Direct Mounting ) with built in single phase protection

HSN CODE : 8536

HSN CODE : 8538

| Cat Code    | Overload Relay Range (A) | MRP [₹] | Terminal Block for individual mounting | MRP [₹] |
|-------------|--------------------------|---------|--|---------|
| MC305ANA3A  | 0.195 - 0.31             | 1560    |  |         |
| MC305ANA3B  | 0.30 - 0.48              | 1560    |  |         |
| MC305ANA3C  | 0.47 - 0.75              | 1560    |  |         |
| MC305ANA3D  | 0.72 - 1.14              | 1560    |  |         |
| MC305ANA3E  | 1.07 - 1.70              | 1560    | (Incoming) MC305TB1                    | 180     |
| MC305ANA3F  | 1.58 - 2.50              | 1560    | (Outgoing) MC305TB3                    | 180     |
| MC305ANA3G  | 2.40 - 3.80              | 1560    |  |         |
| MC305ANA3H  | 3.80 - 6.00              | 1560    |  |         |
| MC305ANA3J  | 6.00 - 9.30              | 1560    |  |         |
| MC305ANA3K  | 8.90 - 13.50             | 1560    |  |         |
| MC305ANA3L  | 13.20 - 20.0             | 1720    |  |         |
| MC305ANA3M  | 17.4 - 24.0              | 1900    | (Incoming) MC305TB2                    | 180     |
| MC305ANA3N* | 22.0 - 30.0              | 2460    | (Outgoing) MC305TB3                    | 180     |
| MC305ANA3P* | 23.0 - 32.0              | 2480    |  |         |
| MC305ANA3Q* | 26.0 - 40.0              | 2700    |  |         |

\*Overload relay type 'N', 'P' &amp; 'Q' must be used with terminal block MC305TB3



## CT Operated Overload Relays-Individual Mounting

HSN CODE : 8536

| Cat Code      | Overload Relay Range (A) | MRP [₹] |
|---------------|--------------------------|---------|
| CT1MC305ANA3C | 24.4 - 39.0              | 3660    |
| CT2MC305ANA3C | 37.6 - 60.0              | 4710    |
| CT3MC305ANA3C | 56.4 - 90.0              | 5790    |
| CT4MC305ANA3C | 84.6 - 135.0             | 5880    |
| CT5MC305ANA3C | 131.6 - 210.0            | 8900    |
| CT6MC305ANA3C | 188.0 - 300.0            | 10630   |
| CT7MC305ANA3C | 263.2 - 420.0            | 11000   |
| CT8MC305ANA3C | 376.0 - 600.0            | 12240   |



## 2 Pole Overload Relays ( Direct Mounting )

HSN CODE : 8536

| Cat Code   | Overload Relay Range (A) | MRP [₹] |
|------------|--------------------------|---------|
| MC307ANA2F | 1.58 - 2.50              | 815     |
| MC307ANA2G | 2.40 - 3.80              | 815     |
| MC307ANA2H | 3.80 - 6.00              | 815     |
| MC307ANA2J | 6.00 - 9.30              | 815     |
| MC307ANA2K | 8.90 - 13.50             | 815     |
| MC307ANA2L | 13.20 - 20.0             | 940     |
| MC307ANA2M | 17.4 - 24.0              | 1005    |
| MC307ANA2N | 22.0 - 30.0              | 1175    |
| MC307ANA2P | 23.0 - 32.0              | 1200    |



## WP Overload Relays for Shakti WP & Oil Starter

HSN CODE : 8536

| Cat Code                   | Overload Relay Range (A) | MRP [₹] |
|----------------------------|--------------------------|---------|
| MC307ANA3J / MC307ANA3J-OS | 6.00 - 9.30              | 1440    |
| MC307ANA3K / MC307ANA3K-OS | 8.90 - 13.50             | 1440    |
| MC307ANA3L / MC307ANA3L-OS | 13.20 - 20.0             | 1600    |
| MC307ANA3M / MC307ANA3M-OS | 17.4 - 24.0              | 1770    |
| MC307ANA3N                 | 22.0 - 30.0              | 2130    |
| MC307ANA3P                 | 23.0 - 32.0              | 2195    |



# Spares for Starter.....

## Spares for Shakti Starters

HSN CODE : 8538

| Cat. No.         | Description                         | MRP [₹] |
|------------------|-------------------------------------|---------|
| SHA              | Contact Kit*                        | 1315    |
| SHAA             | Contact Kit 12A (3P+1 Aux)**        | 1070    |
| SHZ              | Coil 190- 400 V                     | 425     |
| SHCC             | Contact carrier                     | 170     |
| SHPB             | Extended Button Assembly            | 285     |
| SHCO             | Contact for DOL                     | 2535    |
| SHACO            | Contact for Star Delta              | 2810    |
| SHCOA            | Shakti 3PH 12A                      | 2195    |
| NCPYAU*-5S or 5M | SPP (for ASX & OISDY)-6 Wire        | 1395    |
| CPTB630          | Terminal Block 30A 6-way (Auto DOL) | 285     |
| CPAMS-3P/ASX     | Auto Manual Switch 3-pos (Auto DOL) | 480     |

\* Shakti Kit consist of - 8 Fixed main contacts, 4 moving main contacts, 4 springs & 4 retainers

\*\* Shakti 3P+1 Aux Kit consist of - 6 Fixed main contacts, 3 moving main contacts, 2 Aux main contacts, 1 Aux moving contact, 4 springs & 4 retainers

## Spares for 3-Phase Submersible Pump Starter

HSN CODE : 8538

| Cat. No.          | Description                   | MRP [₹] |
|-------------------|-------------------------------|---------|
| NCPYAU*-5S or 5M  | SPP (3 Position SPS)-6 wire   | 1295    |
| BCHSPP1*-5S or 5M | SPP 6-wire                    | 1170    |
| CPAM25            | Ammeter 25A                   | 610     |
| CPAM50            | Ammeter 50A                   | 610     |
| CPAM100           | Ammeter 100A                  | 645     |
| CPVM500           | Voltmeter 500V                | 610     |
| SPSATG            | Electronic Timer (Star Delta) | 1220    |
| CPTB215           | Terminal Block 15A 2 way      | 65      |
| CPTB360           | Terminal Block 60A 3 way      | 215     |
| CPTB660           | Terminal Block 60A 6 way      | 355     |
| CPTB3100          | Terminal Block 100A 3 way     | 735     |
| CPMB              | Mounting Bracket Set          | 130     |
| CPAMS-2P          | Auto Manual Switch 2 position | 365     |
| CPAMS-3P          | Auto Manual Switch 3 position | 390     |
| CPVSS             | Voltmeter Selector Switch     | 395     |
| HEA11GM-PB        | Start PB ( Green )            | 200     |
| HEA11RM-PB        | Stop PB ( Red )               | 200     |
| HCB10             | Aux Block (1 NO)              | 100     |
| HCB01             | Aux Block (1 NC)              | 100     |
| HFB2PAH           | LED-Amber (R-Y-B)             | 325     |
| HFB2XAM           | LED-Amber (Motor Trip)        | 215     |
| HFB2XRM           | LED-RED (415 VAC)             | 215     |

## Spares for Citation M Starters

HSN CODE : 8538

| Cat. No.                  | Description   | MRP [₹]             |                   |
|---------------------------|---|---------------------|-------------------|
| SP100PB3                  | Start & Stop reset button unit assembly for DOL & SD (upto 150HP) | 335                 |                   |
| SP100CB                   | Start actuator Block for DOL                                      | 290                 |                   |
| SP100CBS                  | Start actuator Block for SD                                       | 290                 |                   |
| SP100TB                   | Terminal Block for Star Delta Starters                            | 275                 |                   |
| CPTB975                   | Terminal Block for SD Starters (40-50 HP)                         | 855                 |                   |
| SPSATG                    | Electronic Timer (Star Delta)                                     | 1220                |                   |
| For 250-375 HP SD Starter |   |                     |                   |
| TSFB-R                    | Push Button (RED)   | 250                 |                   |
| TSFB-G                    | Push Button (Green)   | 250                 |                   |
| 050N1                     | Aux Contact Block(1NO+1NC)  | 315                 |                   |
| Discontinued Cat Code     | SPP Type  | Alternate* Cat Code | SPP used in       |
| CPAU*- 5*                 | 2-Pos SPP   | NCPAU*- 5*          | 2-Pos SPS         |
| CPYAU*- 5*                | 3-Pos SPP   | NCPYAU*- 5*         | 3-Pos SPS         |
| CPNYAU*- 5*               | 3-Pos SPP   | NCPNYAU*- 5*        | Oil SD & Auto DOL |

\*Extra plate to be used alongwith alternate SPP

## Spares for 1-Phase Submersible Pump Starter

HSN CODE : 8538

| Cat. No. | Description  | MRP [₹] |
|----------|--|---------|
| ILR-B    | "ON" Indication Lamp                                   | 85      |
| SPAM-10  | Ammeter 10A  | 610     |
| SPAM-15  | Ammeter 15A  | 610     |
| SPAM-25  | Ammeter 25A  | 610     |
| SPAM-50  | Ammeter 50A  | 610     |
| SPVM-300 | Voltmeter 300V   | 610     |
| CPTB530  | Terminal Block 30A 5 way (Mini Version)                | 140     |
| CPTB530H | Terminal Block 30A 5 way (Contr. Version)              | 230     |
| CPTB330  | Terminal Block 30A 3 way                               | 100     |
| CPTB240  | Terminal Block 40A 2 way                               | 145     |
| SPGC     | "ON" Push Button GREEN upto 24A relay range            | 280     |
| SPGB     | "ON" Push Button GREEN For 32A relay range             | 280     |
| SPRC     | "OFF" Push Button RED                                  | 225     |
| MC305TB4 | Add-on Terminal Block for 23-32A relay (outgoing side) | 180     |

## Spares for Freedom DOL

HSN CODE : 8538

| Cat. No. | Description         | MRP [₹] |
|----------|---------------------|---------|
| C320SCB  | Start Contact Block | 195     |
| CEPBI    | Push Button - Green | 100     |
| CEPBO    | Push Button - Red   | 100     |

# Spares for Starter.....



BCH

## KIT for NHD

HSN CODE : 8538

| Contactor Rating | 4P KIT Cat Code | MRP [₹] | 3P+1 Aux KIT Cat Code | MRP [₹] | 1P KIT Cat Code | MRP [₹] |
|------------------|-----------------|---------|-----------------------|---------|-----------------|---------|
| 12A              | SP90E1          | 1185    | SP90E2                | 1080    | SP90E01         | 315     |
| 16A              | SP90A1          | 1325    | SP90A2                | 1210    | SP90A01         | 350     |
| 20A              | SP90F1          | 2090    | SP90F2                | 1900    | SP90F01         | 540     |
| 25A              | SP90B1          | 3020    | SP90B2                | 2750    | SP90B01         | 770     |
| 32A              | SP90D1          | 3585    | SP90D2                | 3265    | SP90D01         | 915     |
| 40A              | SP90C1          | 4035    | SP90C2                | 3670    | SP90C01         | 1025    |

\* 4P Kit consist of - 8 Fixed main contacts, 4 moving main contacts, 4 springs &amp; 4 retainers

\* 3P+1 Aux Kit consist of - 6 Fixed main contacts, 3 moving main contacts, 2 Aux main contacts, 1 Aux moving contact, 4 springs &amp; 4 retainers

## KIT for CPG

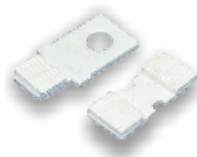
HSN CODE : 8538

| Contactor Rating | Cat Code  | MRP [₹] |
|------------------|-----------|---------|
| 12A              | CPG122PSP | 610     |
| 16A              | CPG162PSP | 650     |
| 20A              | CPG202PSP | 1045    |
| 25A              | CPG252PSP | 1640    |
| 32A              | CPG322PSP | 1795    |
| 40A              | CPG402PSP | 2020    |

\* 2P Kit consist of - 4 Fixed contacts, 2 moving contacts, 2 springs &amp; 2 retainers

## Spare Coil & Carrier

| Contactor                | Cat. No. | MRP [₹] |
|--------------------------|----------|---------|
| Magnet Coil for NHD/ CPG | SP90MC*  | 435     |
| Carrier for NHD          | SP90CC   | 190     |
| Carrier for CPG          | CPG2PCC  | 120     |



## COIL VOLTAGE : MASTER TABLE

|                | PRODUCT              | 160-220V | 170-240V | 220-240V | 230-360V   | 260-400V | 310-400V | 190-400V   | 230-420V   | 275-420V | 380-415V | 415V     | 440V     | 550V     |
|----------------|----------------------|----------|----------|----------|------------|----------|----------|------------|------------|----------|----------|----------|----------|----------|
|                | WORKING VOLTAGE BAND | 136-242V | 145-264V | 187-264V | 195.5-396V | 221-440V | 264-440V | 161.5-440V | 195.5-462V | 234-462V | 323-456V | 353-456V | 374-484V | 468-605V |
| CPG 2P         | CPG216               | BW       | BBW      | H        | -          | -        | -        | -          | -          | -        | N        | -        | -        | -        |
|                | CPG225               | BW       | BBW      | H        | -          | -        | -        | -          | -          | -        | N        | -        | -        | -        |
|                | CPG240               | BW       | BBW      | H        | -          | -        | -        | -          | -          | -        | N        | -        | -        | -        |
| SHAKTI         | SHAKTI DOL           | -        | -        | -        | -          | G        | -        | Z          | ZB         | -        | N        | -        | -        | -        |
|                | SHAKTI STAR DELTA    | -        | -        | -        | -          | G        | -        | Z          | -          | MB       | N        | -        | -        | -        |
| NHD 4P         | CP12, C00N, CP20     | -        | -        | H        | -          | G        | -        | -          | -          | MB       | N        | -        | C        | D        |
|                | N0N                  | -        | -        | H        | LV         | G        | -        | -          | -          | MB       | N        | -        | C        | D        |
|                | N01N                 | -        | -        | H        | LV         | -        | WB       | -          | -          | -        | N        | -        | -        | -        |
|                | N1N                  | -        | -        | H        | -          | -        | WB       | -          | -          | -        | N        | -        | C        | D        |
| CITATION       | C4 & MC10D           | -        | -        | -        | -          | -        | -        | -          | -          | -        | -        | M        | C        | D        |
|                | MC10EN               | -        | -        | -        | -          | -        | -        | -          | -          | -        | -        | M        | C        | D        |
| FREEDOM SERIES | MCE15L TO M5         | -        | -        | -        | -          | -        | -        | -          | -          | -        | -        | M        | C        | D        |
|                | MCE15N, Q & S        | -        | -        | -        | -          | -        | -        | -          | -          | -        | -        | M        | C        | D        |

\* For N1N DL Coil (340-460V) option is available

\* For Citation E &amp; M-5 (70A &amp; 110A) LA Coil (320-400V) option is available

## Spares for P series SPS

HSN CODE : 8538

| Cat Code                        | Description                                 | MRP [₹] |
|---------------------------------|---|---------|
| CPRS-ON-OFF                     | ROCKER SWITCH ON-OFF                        | 75      |
| CPTB210                         | 10A, 2 way TB for P series SPS              | 60      |
| CPLED-R                         | LED RED 415V                                | 230     |
| CPLED-A                         | LED AMBER 415V                              | 230     |
| SP100CBP                        | Start Actuator block for P series SPS       | 290     |
| CPAM10-WH, CPAM15-WH, CPAM25-WH | Ammeter with White Bezel (for Shakti P SPS) | 610     |
| CPVM500-WH                      | Voltmeter 500V White Bezel                  | 610     |

## Dual Meter

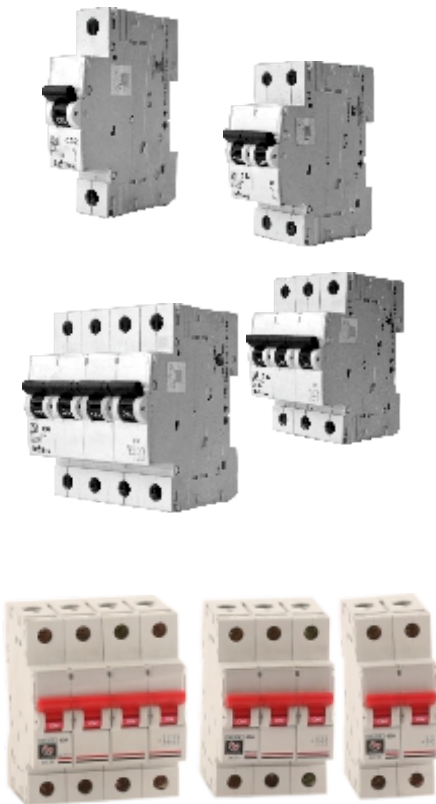
HSN CODE : 9030

| Cat. No.  | MRP [₹] |
|---|---------|
| CPAM10VM300, CPAM15VM300, CPAM25VM300, CPAM30VM300, CPAM50VM300 | 840     |
| CPAM10VM500, CPAM15VM500, CPAM30VM500, CPAM60VM500              | 900     |
| CPAM30-60VM500S72   | 875     |
| CPAM60-120VM500S72  | 945     |
| CPAM30-60VM500S96   | 1115    |
| CPAM60-120VM500S96  | 1250    |



# MCB/Isolator/MCCB/Distribution Boxes

BCH



## MCB - B CURVE

HSN Code : 8536

| Rated Current | SP  | DP   | TP   | FP   |
|---------------|-----|------|------|------|
| 6 - 32A       | 240 | 785  | 1245 | 1675 |
| 40A           | 560 | 1235 | 1900 | 2395 |
| 63A           | 560 | 1235 | 1900 | 2395 |

## MCB - C CURVE

HSN Code : 8536

| Rated Current | SP  | SPN  | DP   | TP   | TPN  | FP   |
|---------------|-----|------|------|------|------|------|
| 6 - 32A       | 240 | 730  | 785  | 1245 | 1560 | 1675 |
| 40A           | 560 | 1090 | 1235 | 1900 | 2115 | 2395 |
| 63A           | 560 | 1090 | 1235 | 1900 | 2115 | 2395 |

Order in multiple of SP-12 Nos., SPN-6 Nos., DP-6 Nos., TP-4 Nos., TPN-3 Nos., FP-3 Nos.

## ISOLATORS

HSN Code : 8536

| Poles | Standard Pack of | Rated Current | Cat. No.    | MRP [₹] |
|-------|------------------|---------------|-------------|---------|
| 2P    | 6 units          | 40A           | BCHISODP40  | 500     |
|       | 6 units          | 63A           | BCHISODP63  | 605     |
| 3P    | 4 units          | 40A           | BCHISOTP40  | 900     |
|       | 4 units          | 63A           | BCHISOTP63  | 1005    |
| 4P    | 3 units          | 40A           | BCHISOFFP40 | 1055    |
|       | 3 units          | 63A           | BCHISOFFP63 | 1125    |

## MCCB

HSN Code : 8536

| I <sub>cu</sub> (Overload Setting) | Rated Current                           | Cat Code   | MRP [₹] |
|------------------------------------|---|------------|---------|
| 10kA @<br>(Fixed)                  | 100, 80<br>(with spreader terminals)    | XFE***G    | 2200    |
|                                    | 100, 80<br>(without spreader terminals) | XFE***G-WT | 2090    |
|                                    | 63, 50, 40, 32, 25, 20, 16              | XFE***G    | 1990    |

### Code - Current Rating

| Rating | 16A | 20A | 25A | 32A | 40A | 50A | 63A | 80A | 100A |
|--------|-----|-----|-----|-----|-----|-----|-----|-----|------|
| *Code  | 016 | 020 | 025 | 032 | 040 | 050 | 063 | 080 | 100  |

MCCB of any other rating can be offered on request, for more details please refer to Industrial product price list or contact sales team

## MCB/MCCB Enclosure

HSN Code : 8537

| Type          | Product                    | Description        | Cat Code     | MRP [₹] |
|---------------|----------------------------|--------------------|--------------|---------|
| MCB Enclosure | Enclosure only without MCB | SP, ONE WAY MCB DB | BCHOWMCBDBSP | 530     |
|               |                            | DP, ONE WAY MCB DB | BCHOWMCBDBDP | 530     |
|               |                            | TP, ONE WAY MCB DB | BCHOWMCBDBTP | 570     |
|               |                            | FP, ONE WAY MCB DB | BCHOWMCBDBFP | 570     |

HSN Code : 8536

|                |                             |                   |        |      |
|----------------|-----------------------------|-------------------|--------|------|
| MCCB Enclosure | Enclosure only without MCCB | F1 MCCB Enclosure | F1EU3P | 1010 |
|----------------|-----------------------------|-------------------|--------|------|

Above MCB/MCCB with the enclosure serves as an ideal solution for main switch.



Complete range of BCH MCB Distribution Boxes are available.

For more details please refer to Comprehensive price list or contact sales team.

# Wires & Cables.....



BCH Three Core Flat Cables with annealed bare & bunched copper conductor insulated & sheathed with PVC for submersible pump motors for voltage grade 1100 V as per I.S. 694 / 2010, conforming to & marked with I.S. 694 / 2010 upto 35 sqmm.

### 3 Core Flat Cable PVC Insulated Type CS- 500 Mtrs MOQ

HSN Code : 8544

| BCH Code | Flat Cable  | LP Per 500 Mtrs in [₹] | Remark    |
|----------|---|------------------------|-----------|
| CS0010BM | 1.0 Sqmm x 3 core Flat cable for Submersible Pumps  |                        |           |
| CS0015BM | 1.5 Sqmm x 3 core Flat cable for Submersible Pumps  |                        |           |
| CS0025BM | 2.5 Sqmm x 3 core Flat cable for Submersible Pumps  |                        |           |
| CS0040BM | 4.0 Sqmm x 3 core Flat cable for Submersible Pumps  |                        | Also      |
| CS0060BM | 6.0 Sqmm x 3 core Flat cable for Submersible Pumps  | Contact                | Available |
| CS0080BM | 8.0 Sqmm x 3 core Flat cable for Submersible Pumps  | Sales office           | in 100 &  |
| CS0100BM | 10.0 Sqmm x 3 core Flat cable for Submersible Pumps |                        | 1000 mtr  |
| CS0160BM | 16.0 Sqmm x 3 core Flat cable for Submersible Pumps |                        | Packing   |
| CS0250BM | 25.0 Sqmm x 3 core Flat cable for Submersible Pumps |                        |           |
| CS0350BM | 35.0 Sqmm x 3 core Flat cable for Submersible Pumps |                        |           |

BCH Three Core Flat Cables with annealed bare & bunched copper conductor insulated & sheathed with PVC for submersible pump motors for voltage grade 1100 V as per I.S. 694 / 2010, conforming to & marked with I.S. 694 / 2010 upto 16 sqmm. with higher insulation & sheath thicknesses with greater mechanical strength.

### 3 Core Flat Cable PVC Insulated Thick Type CFT- 500 Mtrs MOQ

HSN Code : 8544

| BCH Code      | Flat Cable   | LP Per 500 Mtrs in [₹] | Remark    |
|---------------|--|------------------------|-----------|
| CFT-03-0010BM | 1.0 Sqmm x 3 core Flat cable Thick for Submersible Pumps |                        |           |
| CFT-03-0015BM | 1.5 Sqmm x 3 core Flat cable Thick for Submersible Pumps |                        | Also      |
| CFT-03-0025BM | 2.5 Sqmm x 3 core Flat cable Thick for Submersible Pumps |                        | Available |
| CFT-03-0040BM | 4.0 Sqmm x 3 core Flat cable Thick for Submersible Pumps | Contact                | in 100 &  |
| CFT-03-0060BM | 6.0 Sqmm x 3 core Flat cable Thick for Submersible Pumps | Sales office           | 1000 mtr  |
| CFT-03-0100BM | 10 Sqmm x 3 core Flat cable Thick for Submersible Pumps  |                        | Packing   |
| CFT-03-0160BM | 16 Sqmm x 3 core Flat cable Thick for Submersible Pumps  |                        |           |

BCH Three Core Flat Cables with annealed bare & bunched copper conductor XLPE insulated & sheathed with PVC for use in submersible pump motors for voltage grade 1100 V suitable for heavy duty and undervoltage / overvoltage supply areas.

### 3 Core Flat Cable XLPE Insulated Type CFTX- 500 Mtrs MOQ

HSN Code : 8544

| BCH Code       | Flat Cable  | LP Per 500 Mtrs in [₹] | Remark    |
|----------------|---|------------------------|-----------|
| CFTX-03-0015BM | 1.5 Sqmm x 3 core Flat cable XLPE insulated Thick for Submersible Pumps |                        |           |
| CFTX-03-0025BM | 2.5 Sqmm x 3 core Flat cable XLPE insulated Thick for Submersible Pumps |                        | Also      |
| CFTX-03-0040BM | 4.0 Sqmm x 3 core Flat cable XLPE insulated Thick for Submersible Pumps |                        | Available |
| CFTX-03-0060BM | 6.0 Sqmm x 3 core Flat cable XLPE insulated Thick for Submersible Pumps | Contact                | in 100 &  |
| CFTX-03-0080BM | 8.0 Sqmm x 3 core Flat cable XLPE insulated Thick for Submersible Pumps | Sales office           | 1000 mtr  |
| CFTX-03-0100BM | 10 Sqmm x 3 core Flat cable XLPE insulated Thick for Submersible Pumps  |                        | Packing   |
| CFTX-03-0160BM | 16 Sqmm x 3 core Flat cable XLPE insulated Thick for Submersible Pumps  |                        |           |

BCH Three Core Flat Cables with annealed bare & bunched copper conductor XLPE insulated & sheathed with PVC for use in submersible pump motors for voltage grade 1100 V suitable for heavy duty and undervoltage / overvoltage supply areas, with higher cross sectional area of conductors.

HSN Code : 8544

| BCH Code        | Flat Cable  | LP Per 500 Mtrs in [₹] | Remark       |
|-----------------|---|------------------------|--------------|
| CFTHX-03-0040BM | 4.0 Sqmm x 3 core Flat cable XLPE insulated Thick for Submersible Pumps |                        | Contact      |
| CFTHX-03-0060BM | 6.0 Sqmm x 3 core Flat cable XLPE insulated Thick for Submersible Pumps |                        | Sales office |

\* LP of flat cables are subject to change without notice.

Effective from 05.07.2021





**BCH**

# Price List

## General Terms & Conditions

Prices are subject to change without any prior notice and will be applicable as prevailing at the time of dispatch.

- The prices are ex-works basis..
- The prices given in this list are effective as on date and are subject to change without notice.
- Maximum Retail Price (MRP) mentioned are inclusive of GST.
- The List Prices (LP) mentioned are exclusive of GST.
- The duties, taxes and other statutory levies are based on rates prevailing at the time of billing. Any subsequent revision of those rates having retrospective effective shall be to customer's account.
- In case where any GST exemption has been claimed, the purchaser is responsible for providing the necessary GST exemption form within the specified period, failing which the purchaser would be liable for the payment of full GST plus applicable interest and penalties
- All Prices are in Indian Rupees (₹).
- Alteration made after receipt of confirmation of order are subject to price & delivery revisions and any other expenses or levies
- The dispute, if any, will be resolved mutually by discussion. However, if no settlement is forthcoming then, the Courts at New Delhi shall only have territorial jurisdiction to hear and decide the dispute.

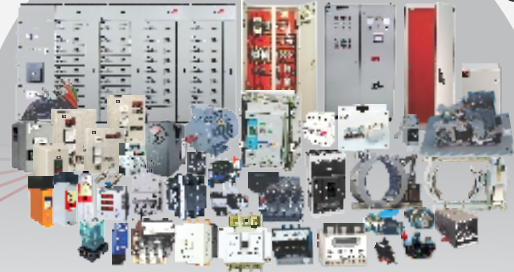
## Warranty

All products, unless specifically mentioned otherwise, shall have warranty, against manufacturing defects for a period of 18\* months from the date of invoicing & 24 months from date of manufacturing whichever is later subject to the provision of proper usage and does not cover defects arising out of fire, accident, inefficient maintenance, faulty operation and willful or accidental damage. The manufacturer shall not be liable for any consequential loss, injury or damages attributable to defect or failure of its products.

\* Proof of purchase to be retained to avail warranty.

- Power Control Products
- Starters & Submersible Pump Starters
- Industrial Enclosures
- Industrial Products
- Wires & Cables
- Motor Control Products
- Power Bus Duct
- Customised Solution
- Automation

*a strong commitment to serve better always ...*



**BHARTIA**

**BCH**

# BCH ELECTRIC LIMITED



[www.bchindia.com](http://www.bchindia.com)



**1800-103-9262**

[customercare@bchindia.com](mailto:customercare@bchindia.com)

Visit us at : [www.bchindia.com](http://www.bchindia.com)

**Corporate Office :** 1105, New Delhi House, 27, Barakhamba Road, New Delhi - 110 001 Tel. : 91-11- 43673100

**CIN :** U31103WB1965PLC026427, **Customercare No.** 1800-103-9262, **E-mail :** [marketing@bchindia.com](mailto:marketing@bchindia.com)

**Registered Office :** Block 1E, 216, Acharya Jagadish Chandra Bose Road, Kolkata - 700 017

**Works 1 :** 20/4, Mathura Road, Faridabad - 121 006 (Haryana) Tel. : 0129-4063000/4293000 Fax : 0129-2304016

**Works 2 :** 64-68, Sector-7, IIE, Pant Nagar, Rudrapur, Udham Singh Nagar - 263 153 (Uttarakhand) Tel. : 05944-250214/16 Fax : 05944-250215

**Sales Offices :**

**Ahmedabad**  
103, Aaron,  
Nr. SBI Laghuudyug branch,  
Behind Sakar-1  
Gandhinagar Railway station,  
Ellis bridge, Ahmedabad - 380006  
Tel. : 079-26589719  
E-mail.: [ahmedabad@bchindia.com](mailto:ahmedabad@bchindia.com)

**Bangalore**  
2nd Floor, 130/5,  
K.H. Road (Double road),  
Bangalore - 560 027  
Tel. : 080-41144879 / 22236759  
E-mail : [bangalore@bchindia.com](mailto:bangalore@bchindia.com)

**Bhubaneswar**  
Mallick Commercial  
Complex Plot No.: A/69, unit - 3  
Bhubaneswar - 751 001  
Tel.: 0674-2380988  
E-mail.: [bhubaneswar@bchindia.com](mailto:bhubaneswar@bchindia.com)

**Chandigarh (Panchkula)**  
SCO -129, 2nd Floor,  
MDC, Sector-5 Panchkula,  
Haryana-134 114  
Tel.: 0172-5078957 / 5049905  
E-mail.: [chandigarh@bchindia.com](mailto:chandigarh@bchindia.com)

**Chennai**  
Flat No. 3A, 3rd Floor,  
Sree Apartments,  
No.508, TTK Road,  
Alwarpet, Chennai 600 018  
Tel.: 044-24337046, 24337047  
E-mail : [chennai@bchindia.com](mailto:chennai@bchindia.com)

**Coimbatore**  
87, Dr. Nanjappa Road,  
Coimbatore - 641 018  
Tel. : 0422-2305311 / 2302599  
E-mail : [coimbatore@bchindia.com](mailto:coimbatore@bchindia.com)

**Delhi 1**  
801, Akash Deep Building,  
28A, Barakhamba Road,  
New Delhi - 110 001  
Tel. : 011-23313878 / 43518200  
E-mail : [delhi@bchindia.com](mailto:delhi@bchindia.com)

**Delhi 2**  
710, Deepali Building, 92  
Nehru Place, New Delhi - 110 019  
Tel. : 011-45720334  
E-mail : [delhi2@bchindia.com](mailto:delhi2@bchindia.com)

**Dehradun**  
8, Co-operative Industrial Estate,  
Patel Nagar, Dehradun-248001  
E-mail : [dehradun@bchindia.com](mailto:dehradun@bchindia.com)

**Faridabad**  
20/4, Mathura Road,  
Faridabad - 121 006 (Haryana)  
Telfax : 0129-4293009  
E-mail : [faridabad@bchindia.com](mailto:faridabad@bchindia.com)

**Hyderabad**  
1-8-303/48/13/102, Arya One,  
2nd Floor, P. G. Road,  
Secunderabad - 500 003  
Tel. : 040-66206263/27890306  
Fax : 040-66207273  
E-mail : [hyderabad@bchindia.com](mailto:hyderabad@bchindia.com)

**Indore**  
330-331, Indraprastha Tower,  
3rd Floor, 6, M.G. Road,  
Indore - 452 001  
Tel. : 0731-2510011 / 2510012  
E-mail : [indore@bchindia.com](mailto:indore@bchindia.com)

**Jaipur**  
25, Hathroi, Gopalbari,  
Jaipur - 302 001  
Tel. : 0141-2363521  
E-mail : [jaipur@bchindia.com](mailto:jaipur@bchindia.com)

**Jamshedpur**  
3rd Floor, Aastha Trade Centre,  
'Q' Road, Bistupur,  
Jamshedpur - 831 001  
Tel. : 0657-2321097/2321481  
E-mail : [jamshedpur@bchindia.com](mailto:jamshedpur@bchindia.com)

**Kolkata**  
Block 1E, 216,  
Acharya Jagadish Chandra Bose Road,  
Kolkata - 700 017  
Tel. : 033-22871728 / 46021884  
E-mail : [kolkata@bchindia.com](mailto:kolkata@bchindia.com)

**Lucknow**  
Madan Plaza, 3rd Floor,  
14, Station Road,  
Lucknow - 226 001  
Tel. : 0522-4025597/4025997  
E-mail : [lucknow@bchindia.com](mailto:lucknow@bchindia.com)

**Ludhiana**  
S.C.O - 18, 2nd Floor,  
Feroze Gandhi Market,  
Ludhiana - 140 001  
Tel. : 0161-5021807/5022808  
E-mail : [ludhiana@bchindia.com](mailto:ludhiana@bchindia.com)

**Mumbai**  
A-151, Mittal Tower,  
Nariman Point,  
Mumbai - 400 021  
Tel. : 022-22822947/22850162  
Fax : 022-22822858  
E-mail : [mumbai@bchindia.com](mailto:mumbai@bchindia.com)

**Pune**  
8, Sarosh Bhavan,  
16-B/1, Dr. Ambedkar Road,  
Pune - 411 001  
Tel. : 020-41210002  
E-mail : [pune@bchindia.com](mailto:pune@bchindia.com)

**Raipur**  
2nd Floor, Building No. B-234,  
Indira Gandhi Vyavasayik Parisar,  
Pandri, Raipur - 492 004  
Tel. : 0771-4020213 / 4045053  
E-mail : [raipur@bchindia.com](mailto:raipur@bchindia.com)

**Trichy**  
2B, Kannagi Street,  
Ayyappa Nagar, K.K.Nagar  
Trichy - 620 021, Tamilnadu  
Tel.: 0431-4040497  
E-mail.: [trichy@bchindia.com](mailto:trichy@bchindia.com)

**Vadodara**  
301, Third Floor, "Florence Classic",  
10, Ashapuri Co-Op. Hsg. Soc. Ltd., Opp. VUDA Housing,  
Near Cow Circle, Akota, Vadodara - 390 020  
Tel. : 0265-2345068/2345069  
Telefax : 0265-2345068,  
E-mail : [vadodara@bchindia.com](mailto:vadodara@bchindia.com)

**Other Branch Locations**

**Cochin :** [cochin@bchindia.com](mailto:cochin@bchindia.com), **Guwahati :** [guwahati@bchindia.com](mailto:guwahati@bchindia.com), **Vishakapatnam :** [vizag@bchindia.com](mailto:vizag@bchindia.com), **Surat :** [surat@bchindia.com](mailto:surat@bchindia.com)

**Resident Engineer Locations**

|           |               |            |             |             |
|-----------|---------------|------------|-------------|-------------|
| Anantapur | Kanpur        | Nashik     | Salem       | Yamunanagar |
| Bhopal    | Katni         | Patna      | Siliguri    |             |
| Calicut   | Karimnagar    | Puducherry | Surat       |             |
| Gurgaon   | Kota          | Rajkot     | Tirunelveli |             |
| Jalandhar | Midnapur      | Ranchi     | Udaipur     |             |
| Jalgaon   | Muzaffarnagar | Rourkela   | Vapi        |             |
| Jodhpur   | Nagpur        | Rudrapur   | Vijayawada  |             |

Since product improvement is a continuous process, the data furnished in this brochure may undergo revision without prior notice.