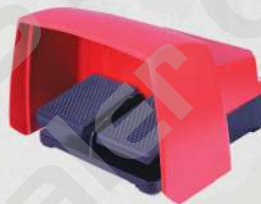


PRICE LIST

w.e.f. 15 October 2021



BRISK®


MICRO SWITCHES

1-3

B3 Series
 B1 Series

- Fin Type
- QC Type
- T Type

Elements


LIMIT SWITCHES

3-6

Precision Series
 BEST Series
 Standard Series
 Compact Series
 Miniature Series
 BLS Series


FOOT SWITCHES

7-10

Mini Series
 Medium Series
 Heavy Series

- Single Pedal
- Double Pedal


SAFETY LIGHT CURTAIN

11

Parallel Beam Type
 Controller for Safety Light Curtain

- Controller with Normal Relay
- Controller with Safety Relay


SWITCH MODE POWER SUPPLY (SMPS)

12

Panel Mount

- Premium Series
- Economics Series

DIN Rail Mount

- Premium Series
- Economics Series

BRISK INDUSTRIES PVT LTD

Reg. Office: Unit No. 10, Gr. Floor, Madhani Estate, Senapati Bapat Marg, Dadar (W), Mumbai: 400 028
Email ID: info@brisk.co.in / mumbai@brisk.co.in, Mobile: +91 9969012108 / 9969012106
Factory : Plot No.: A/8, Junnar Taluka Ind. Co-Op Soc. Ltd., Kandali, Narayangoan, Pune: 412 412
Email ID: pune@brisk.co.in, Mobile: 8600095788 / 9833872107, website: www.brisk.co.in
Corporate Identity No. U28910MH2013PTC244175



MINIATURE MICRO SWITCHES

Sr. No.	Description	Product Code			MRP per Unit (Rs.)	Std. Pkg. (Nos.) per box
		A Screw Terminal	B Solder Terminal	C Push On Terminal		
1	Basic Switch (Pin Plunger)	B3A 00	B3B 00	B3C 00	68	50
2	Short Plain Lever	B3A 01	B3B 01	B3C 01	75	40
3	Medium Plain Lever	B3A 02	B3B 02	B3C 02	80	40
4	Extended Plain Lever	B3A 03	B3B 03	B3C 03	85	40
5	Extra Extended Plain Lever (60mm)	B3A 04	B3B 04	B3C 04	91	40
6	Short Roller Lever	B3A 05	B3B 05	B3C 05	81	40
7	Medium Roller Lever	B3A 06	B3B 06	B3C 06	85	40
8	Medium Lever with V Notch	B3A 07	B3B 07	B3C 07	86	40
9	Medium Stimulated Lever	B3A 08	B3B 08	B3C 08	86	40
10	Plain Leaf	B3A 09	B3B 09	B3C 09	86	20
11	Roller Leaf	B3A 10	B3B 10	B3C 10	92	20
12	Finger Push Button - S.P.	B3A 15	B3B 15	B3C 15	100	20
13	Finger Push Button - D.P.	B3A 16	B3B 16	B3C 16	200	20
14	Push Button - S.P.	B3A 17	B3B 17	B3C 17	100	20
15	Push Button - D.P.	B3A 18	B3B 18	B3C 18	200	20
16	Z Long Lever	B3A 24	B3B 24	B3C 24	110	20

WITH EFFECT FROM : 15th October 2021

Terms and Conditions :

1. This Price List supersedes all our previous Price Lists.
2. Prices are subject to change without prior notice.
3. FOR Ex Factory/Godown (P&F and Frieght charges will be extra).
4. All disputes,if any, are Subject to Mumbai Jurisdiction only.
5. No Warrant/Guarantee for burning or damage of the products.

BRISK INDUSTRIES PVT LTD

Reg. Office: Unit No. 10, Gr. Floor, Madhani Estate, Senapati Bapat Marg, Dadar (W), Mumbai: 400 028
Email ID: info@brisk.co.in / mumbai@brisk.co.in, Mobile: +91 9969012108 / 9969012106

Factory : Plot No.: A/8, Junnar Taluka Ind. Co-Op Soc. Ltd., Kandali, Narayangoan, Pune: 412 412
Email ID: pune@brisk.co.in, Mobile: 8600095788 / 9833872107, website: www.brisk.co.in
Corporate Identity No. U28910MH2013PTC244175



STANDARD MICRO SWITCHES

Sr. No.	Description	Fin type Base with Solder Terminals 5A/250 VAC		T' Type Base with Screw Terminals 15A/250 VAC		Q.C. Type Base with Screw Terminals 10A/250 VAC		Std.Pkg. (Nos.) per box
		Order Code	MRP per Unit (Rs.)	Order Code	MRP per Unit (Rs.)	Order Code	MRP per Unit (Rs.)	
1	Basic Micro Switch (Pin Plunger)	Fin-01	218	T-01	263	Q-01	#	10
2	Long Plain Lever	Fin-02	263	T-02	308	Q-02	#	10
3	Short Roller Lever	Fin-03	269	T-03	315	Q-03	#	10
4	Long Roller Lever	Fin-04	275	T-04	320	Q-04	#	10
5	Flexible Leaf	Fin-05	253	T-05	298	Q-05	#	10
6	Flexible Roller Leaf	Fin-06	258	T-06	312	Q-06	#	10
7	Finger Push Button	Fin-07	279	T-07	323	Q-07	#	10
8	Compact Overtravel Plunger	Fin-08	284	T-08	328	Q-08	#	10
9	Extended Overtravel Plunger	Fin-09	293	T-09	332	Q-09	#	10
10	Panel Mount Plunger	Fin-10	298	T-10	339	Q-10	#	10
11	Panel Mount Roller Plunger (Cross)	Fin-11	328	T-11	363	Q-11	#	10
12	Panel Mount Roller Plunger (Across)	Fin-12	328	T-12	363	Q-12	#	10
13	Short Plain Lever (R.A)	Fin-13	269	T-13	287	Q-13	#	10
14	Short Plain Roller Lever (R.A.)	Fin-14	275	T-14	309	Q-14	#	10
15	Medium Plain Lever (R.A.)	Fin-15	279	T-15	329	Q-15	#	10
16	Medium Plain Roller Lever (R.A.)	Fin-16	285	T-16	335	Q-16	#	10
17	Plain PVC Lever (R.A.)	Fin-17	322	T-17	344	Q-17	#	10
18	Panel Mount Roller Plunger (Auxiliary)	Fin-18	334	T-18	372	Q-18	#	10
19	Panel Mount Plunger (Auxiliary)	Fin-19	327	T-19	359	Q-19	#	10
20	Short Panel Lever (Plastic Type)	Fin-20	275	T-20	309	Q-20	#	10
21	SP. Extended Overtravel Plunger	BMS-7	335	-	-	-	-	10

Price will be given on request.

WITH EFFECT FROM : 15th October 2021

Terms and Conditions :

1. This Price List supersedes all our previous Price Lists.
2. Prices are subject to change without prior notice.
3. FOR Ex Factory/Godown (P&F and Frieght charges will be extra).
4. All disputes,if any, are Subject to Mumbai Jurisdiction only.
5. No Warrant/Guarantee for burning or damage of the products.

BRISK INDUSTRIES PVT LTD

Reg. Office: Unit No. 10, Gr. Floor, Madhani Estate, Senapati Bapat Marg, Dadar (W), Mumbai: 400 028
Email ID: info@brisk.co.in / mumbai@brisk.co.in, Mobile: +91 9969012108 / 9969012106

Factory : Plot No.: A/8, Junnar Taluka Ind. Co-Op Soc. Ltd., Kandali, Narayangoan, Pune: 412 412
Email ID: pune@brisk.co.in, Mobile: 8600095788 / 9833872107, website: www.brisk.co.in
Corporate Identity No. U28910MH2013PTC244175



MINIATURE & STANDARD LIMIT SWITCHES

Sr. No.	Description	Type	Product Code	MRP per Unit (Rs)
A	MINIATURE LIMIT SWITCHES			
1	Top Push Rod	Normal	BML-P	464
2	Top Push Rod	Snap	BML-PS	502
3	Top Push Roller	Normal	BML-R	560
4	Top Push Roller	Snap	BML-RS	580
5	Roller Lever	Normal	BML-RL	565
6	Roller Lever	Snap	BML-RLS	576
B	STANDARD LIMIT SWITCHES			
1	Std. Aluminium Housing (with roller lever) 1 NO + 1 NC	Normal	LSR	624
2	Std. Aluminium Housing (with roller lever) 1 NO + 1 NC	Snap	LSRS	648
3	Std. Aluminium Housing (with push rod actuation) 1 NO + 1 NC	Normal	LSP	520
4	Std. Aluminium Housing (with push rod actuation) 1 NO + 1 NC	Snap	LSPS	544
C	OIL TIGHT LIMIT SWITCHES			
1	Oil Tight Aluminium Housing (with roller lever) 1 NO + 1 NC	Normal	LSR-O	784
2	Oil Tight Aluminium Housing (with roller lever) 1 NO + 1 NC	Snap	LSRS-O	808
3	Oil Tight Aluminium Housing (with push rod actuator) 1 NO + 1 NC	Normal	LSP-O	840
4	Oil Tight Aluminium Housing (with push rod actuator) 1 NO + 1 NC	Snap	LSPS-O	864
D	Standard LIMIT SWITCHES - Spares			
1	Bracket Roller Assembly Lever for LSR		LSR-BRAL	150

WITH EFFECT FROM : 15th October 2021

Terms and Conditions :

1. This Price List supersedes all our previous Price Lists.
2. Prices are subject to change without prior notice.
3. FOR Ex Factory/Godown (P&F and Frieght charges will be extra).
4. All disputes,if any, are Subject to Mumbai Jurisdiction only.
5. No Warrant/Guarantee for burning or damage of the products.

BRISK INDUSTRIES PVT LTD

Reg. Office: Unit No. 10, Gr. Floor, Madhani Estate, Senapati Bapat Marg, Dadar (W), Mumbai: 400 028
Email ID: info@brisk.co.in / mumbai@brisk.co.in, Mobile: +91 9969012108 / 9969012106

Factory : Plot No.: A/8, Junnar Taluka Ind. Co-Op Soc. Ltd., Kandali, Narayangoan, Pune: 412 412
Email ID: pune@brisk.co.in, Mobile: 8600095788 / 9833872107, website: www.brisk.co.in

Corporate Identity No. U28910MH2013PTC244175



ELEMENTS

Sr. No.	Description	Order Code	MRP per Unit (Rs.)	Std. Pkg. (Nos.) per box
A	OPEN TYPE LIMIT SWITCHES			
1	Open Execution (with push rod) 1 NO + 1 NC, Normal Action	LSO	194	10
2	Open Execution (with push rod) 1 NO + 1 NC, Snap Action	LSOS	224	10
3	Open Execution (with push rod & cover) 1 NO + 1 NC, Normal Action	LSO-ES	325	10
4	Open Execution (with push rod & cover) 1 NO + 1 NC, Snap Action	LSOS-ES	325	10
5	Open Execution (with cover) 1 NO + 1 NC, Normal Action	LSO-001	273	10
6	Open Execution (with cover) 1 NO + 1 NC, Snap Action	LSOS-001	304	10
7	Open Execution 1 NO + 1 NC, Normal Action	BML-001	174	10
8	Open Execution 1 NO + 1 NC, Snap Action	BMLS-001	210	10
9	BLS & BEST Element 1 NO + 1 NC, Snap Action	BSE	413	10
10	Compact Limit Switch Element 1NO + 1NC, Snap Action	CSE	413	10
11	POT of 5K Ohms	POT P5K	775	1
12	POT of 10K Ohms	POT P10K	775	1
13	POPO SWITCH	POPO	400	10
14	B1 RC - Rubber Cap	B1RC	150	10

PRECISION LIMIT SWITCHES

Sr. No.	Description	Order Code	MRP per Unit (Rs.)	Std. Pkg. (Nos.) per box
1	Without Operator ; 1NO+1NC	BPS - 001	438	5
2	With Top Push Button Operator ; 1NO+1NC	BPS - 101	565	5
3	With Top Push Roller Operator ; 1NO+1NC	BPS - 102	565	5
4	With Top Push Roller Operator (assembled at right angle to contact block) ; 1NO+1NC	BPS - 103	565	5
5	With Six Inch Lever Operator (right hand mounting) ; 1NO+1NC	BPS - 104	565	10
6	With Six Inch Lever Operator (left hand mounting) ; 1NO+1NC	BPS - 105	565	10
7	With Roller Lever Operator (right hand mounting) ; 1NO+1NC	BPS - 106	565	5
8	With Roller Lever Operator (left hand mounting) ; 1NO+1NC	BPS - 107	565	5
9	Short Lever Operator; 1NO+1NC	BPS - 108	565	5
10	Short Lever with Roller Operator; 1NO+1NC	BPS - 109	565	5
11	Without Operator ; 2NO+2NC	BPS - 002	657	5
12	With Top Push Button Operator ; 2NO+2NC	BPS - 201	782	5
13	With Top Push Roller Operator ; 2NO+2NC	BPS - 202	782	5
14	With Top Push Roller Operator (assembled at right angle to contact block) ; 2NO+2NC	BPS - 203	782	5
15	With Six Inch Lever Operator (right hand mounting) ; 2NO+2NC	BPS - 204	782	10
16	With Six Inch Lever Operator (left hand mounting) ; 2NO+2NC	BPS - 205	782	10
17	With Roller Lever Operator (right hand mounting) ; 2NO+2NC	BPS - 206	782	5
18	With Roller Lever Operator (left hand mounting) ; 2NO+2NC	BPS - 207	782	5
19	Short Lever Operator; 2NO+2NC	BPS - 208	782	5
20	Short Lever with Roller Operator ,2NO+2NC	BPS - 209	782	5

WITH EFFECT FROM : 15th October 2021

Terms and Conditions :

1. This Price List supersedes all our previous Price Lists.
2. Prices are subject to change without prior notice.
3. FOR Ex Factory/Godown (P&F and Frieght charges will be extra).
4. All disputes,if any, are Subject to Mumbai Jurisdiction only.
5. No Warrant/Guarantee for burning or damage of the products.

BRISK INDUSTRIES PVT LTD

Reg. Office: Unit No. 10, Gr. Floor, Madhani Estate, Senapati Bapat Marg, Dadar (W), Mumbai: 400 028
Email ID: info@brisk.co.in / mumbai@brisk.co.in, Mobile: +91 9969012108 / 9969012106
Factory : Plot No.: A/8, Junnar Taluka Ind. Co-Op Soc. Ltd., Kandali, Narayangoan, Pune: 412 412
Email ID: pune@brisk.co.in, Mobile: 8600095788 / 9833872107, website: www.brisk.co.in
Corporate Identity No. U28910MH2013PTC244175



BLS (OIL TIGHT) LIMIT SWITCHES

Sr. No.	Description	Product Code	MRP per Unit (Rs.)
1	Roller Lever with R 38	BLS-01	1200
2	Roller Lever with R 50	BLS-02	1200
3	Roller Lever with R 64	BLS-03	1200
4	Roller Lever with R 76	BLS-04	1200
5	Yoke Roller Lever	BLS-05	1350
6	Adjustable Roller Lever	BLS-06	1200
7	Adjustable Rod Lever	BLS-07	1200
8	Top Plunger (Push Button)	BLS-08	1200
9	Top Roller Plunger	BLS-09	1200
10	Side Plunger (Push Button)	BLS-10	1350
11	Side Roller Plunger	BLS-11	1350
12	Wobble Lever	BLS-12	1200
13	Adjustable Base	BLS-16	1200
14	Adjustable Side Plunger	BLS-17	1350

BEST LIMIT SWITCHES

Sr. No.	Description	Product Code	MRP Per Unit (Rs.)
1	Roller Lever with R 38 (Snap)	BEST-01	1315
2	RollerLever with R 50 (Snap)	BEST-02	1350
3	Roller Lever with R 64 (Snap)	BEST-03	1308
4	Roller Lever with R 76 (Snap)	BEST-04	1308
5	Yoke Roller Lever (Snap)	BEST-05	1470
6	Adjustable Roller Lever (Snap)	BEST-06	1308
7	Adjustable Rod Lever (Snap)	BEST-07	1308
8	Top Plunger (Push Button) (Snap)	BEST-08	1308
9	Top Roller Plunger (Snap)	BEST-09	1308
10	Side Plunger (Push Button) (Snap)	BEST-10	1308
11	Side Roller Plunger (Snap)	BEST-11	1308
12	Wobble Lever (Snap)	BEST-12	1308
13	With Push Rod (Normal)	BEST-13 P	1288
14	With Push Rod (Snap)	BEST-13 PS	1308
15	With Normal Roller Lever (Normal)	BEST-14 P	1338
16	With Normal Roller Lever (Snap)	BEST-14 PS	1358
17	With Angular Roller Lever (Normal)	BEST-15 P	1338
18	With Angular Roller Lever (Snap)	BEST-15 PS	1358

WITH EFFECT FROM : 15th October 2021

Terms and Conditions :

1. This Price List supersedes all our previous Price Lists.
2. Prices are subject to change without prior notice.
3. FOR Ex Factory/Godown (P&F and Frieght charges will be extra).
4. All disputes,if any, are Subject to Mumbai Jurisdiction only.
5. No Warrant/Guarantee for burning or damage of the products.

BRISK INDUSTRIES PVT LTD

Reg. Office: Unit No. 10, Gr. Floor, Madhani Estate, Senapati Bapat Marg, Dadar (W), Mumbai: 400 028
Email ID: info@brisk.co.in / mumbai@brisk.co.in, Mobile: +91 9969012108 / 9969012106

Factory : Plot No.: A/8, Junnar Taluka Ind. Co-Op Soc. Ltd., Kandali, Narayangoan, Pune: 412 412
Email ID: pune@brisk.co.in, Mobile: 8600095788 / 9833872107, website: www.brisk.co.in
Corporate Identity No. U28910MH2013PTC244175



COMPACT LIMIT SWITCHES (BCL Series)

Sr. No.	Description	Order Code	MRP per Unit (Rs.)
1	Roller Lever	BCL-701	735
2	Adjustable Roller Lever	BCL-706	750
3	Adjustable Rod	BCL-707	725
4	Top Plunger (Push Button)	BCL-708	635
5	Top Roller Plunger	BCL-709	635
6	Angular Roller Lever	BCL-710	585
7	Spring Wobble Lever	BCL-711	580
8	Wobble Rod	BCL-712	580

WITH EFFECT FROM : 15th October 2021

Terms and Conditions :

1. This Price List supersedes all our previous Price Lists.
2. Prices are subject to change without prior notice.
3. FOR Ex Factory/Godown (P&F and Frieght charges will be extra).
4. All disputes,if any, are Subject to Mumbai Jurisdiction only.
5. No Warrant/Guarantee for burning or damage of the products.

BRISK INDUSTRIES PVT LTD

Reg. Office: Unit No. 10, Gr. Floor, Madhani Estate, Senapati Bapat Marg, Dadar (W), Mumbai: 400 028
Email ID: info@brisk.co.in / mumbai@brisk.co.in, Mobile: +91 9969012108 / 9969012106
Factory : Plot No.: A/8, Junnar Taluka Ind. Co-Op Soc. Ltd., Kandali, Narayangoan, Pune: 412 412
Email ID: pune@brisk.co.in, Mobile: 8600095788 / 9833872107, website: www.brisk.co.in
Corporate Identity No. U28910MH2013PTC244175



FOOT SWITCHES

Sr. No.	Product Code	Description	No. Contact	Remark	MRP per Unit (Rs.)
BFS - 00 Series					
1	BFS-00	6 Amp. 250 VAC without wire	1NO 1NC	—	315
2	BFS-00 / C2.2	6 Amp. 250 VAC with 2 core 2 meter wire	1NO 1NC	—	440
3	BFS-00 / C2.4	6 Amp. 250 VAC with 2 core 4 meter wire	1NO 1NC	—	550
4	BFS-00 / A / C2.2	10 Amp. 250 VAC with 2 core 2 meter wire	1NO 1NC	∅	500
5	BFS-00 / D / C2.5	6 Amp. 250 VAC with 2 core 5 meter wire with DB 9 Female Connector.	1NO 1NC	∅	1000
6	BFS-00 / D / C2.10	6 Amp. 250 VAC with 2 core 10 meter wire with DB 9 Female Connector.	1NO 1NC	∅	1375
7	BFS-00 / T / C4.3	6 Amp. 250 VAC with 4 core 3 meter wire	2NO 2NC	—	1408
8	BFS-00 / T / C4.5	6 Amp. 250 VAC with 4 core 5 meter wire	2NO 2NC	—	1917
9	BFS-00 / T / D / C4.5	6 Amp. 250 VAC with 4 core 5 meter wire with DB 9 Connector	2NO 2NC	∅	2025
10	BFS-00 / T / D / C4.10	6 Amp. 250 VAC with 4 core 10 meter wire with DB 9 Connector	2NO 2NC	∅	2400
11	BFS-00/USB/LC/C5	USB Left Click foot switch, with 5 meter wire.		∅	2025
12	BFS-00/USB/RC/C5	USB Right Click foot switch, with 5 meter wire.		∅	2025
13	BFS-00/USB/T/C5	USB Twin Foot Switch, with 5 meter wire.		∅	4625
14	BFS-00/USB/T/H/C5	USB Twin Foot Switch, with 5 meter wire.		∅	5015
BFS - 01 Series					
15	BFS-01 / A	10Amp. 250V AC without Wire.	1NO 1NC	—	450
16	BFS-01 / A / C2.2	10Amp.250V AC with 2 core 2 meter wire	1NO 1NC	—	575
17	BFS-01 / A / C2.3	10Amp. 250V AC with 2 core 3 meter wire	1NO 1NC	—	650
18	BFS-01 / A / C3.2	10Amp. 250V AC with 3 core 2 meter wire	1NO 1NC	—	650
19	BFS-01 / A / C3.3.1	10Amp. 250V AC with 3 core 3.1 meter wire	1NO 1NC	—	745
20	BFS-01 / A / T / C4.3	10Amp.250V AC with 4 core 3 meter wire	2NO 2NC	—	1968
21	BFS-01 / A / T / C2.3.2	10Amp.250V AC with 2 core 3.2 meter wire (both pedals are Grey Colour)	2NO 2NC	—	1868
22	BFS-01 / A / T / H / C4.3	Twin Foot Switch, 10 Amp.250V AC with 4 core 3 meter wire with Handle.	2NO 2NC	∅	2600
23	BFS-01 / A / TR / H / C6.2	Tripple Foot Switch, 10 Amp.250V AC with 6 core 2 meter wire with Handle.	3NO 3NC	∅	4900
BFS - 02 Series					
24	BFS-02 / A	10Amp. 250V AC	1NO 1NC	—	580
25	BFS-02/ A / C2.2	10Amp. 250V AC with 2 core 2 meter wire	1NO 1NC	—	705
26	BFS-02/ A / C3.2	10Amp. 250V AC with 3 core 2 meter wire	1NO 1NC	—	785
27	BFS-02/ A / C2.4	10Amp. 250V AC with 2 core 4 meter wire	1NO 1NC	—	808
28	BFS-02/ D / C2.3	10Amp. 250V AC with 2 core 3 meter wire; with DB9 female type connector	1NO 1NC	∅	1095

Note: ∅ - Delivery period will be 5 to 6 weeks

WITH EFFECT FROM : 15th October 2021

Terms and Conditions :

1. This Price List supersedes all our previous Price Lists.
2. Prices are subject to change without prior notice.
3. FOR Ex Factory/Godown (P&F and Frieght charges will be extra).
4. All disputes,if any, are Subject to Mumbai Jurisdiction only.
5. No Warrant/Guarantee for burning or damage of the products.

BRISK INDUSTRIES PVT LTD

Reg. Office: Unit No. 10, Gr. Floor, Madhani Estate, Senapati Bapat Marg, Dadar (W), Mumbai: 400 028
 Email ID: info@brisk.co.in / mumbai@brisk.co.in, Mobile: +91 9969012108 / 9969012106
 Factory : Plot No.: A/8, Junnar Taluka Ind. Co-Op Soc. Ltd., Kandali, Narayangoan, Pune: 412 412
 Email ID: pune@brisk.co.in, Mobile: 8600095788 / 9833872107, website: www.brisk.co.in
 Corporate Identity No. U28910MH2013PTC244175



FOOT SWITCHES

Sr. No.	Product Code	Description	No. Contact	Remark	MRP per Unit (Rs.)
BFS - 03 Series					
30	BFS-03 / B	15Amp. 250V AC	1NO 1NC	—	865
31	BFS-03/ B / C2.2	15Amp. 250V AC with 2 core 2 meter wire	1NO 1NC	—	989
32	BFS-03/ Z / C2.2	Push to ON; Push to OFF 10Amp. 250V AC with 2 core 2 meter wire	P O P O	∅	1205
BFS - 04 Series					
33	BFS-04 / B	15Amp. 250V AC (Micro Switch)	1NO 1NC	—	1998
34	BFS-04 / B / C2.2	15Amp. 250V AC (Micro Switch) with 2 core 2 meter wire	1NO 1NC	—	2123
35	BFS-04 / X	10Amp. 500V AC	1NO 1NC	—	2198
36	BFS-04 / XX	10Amp. 500V AC	2NO 2NC	—	2406
37	BFS-04 / Z / C2.2	Push to ON; Push to OFF 10Amp. 250V AC with 2 core 2 meter wire	P O P O	∅	2656
38	BFS-04 / Z / C2.6	Push to ON; Push to OFF 10Amp. 250V AC with 2 core 6 meter wire	P O P O	∅	2925
BFS - 05 Series					
39	BFS-05 / B	15Amp. 250V AC (Micro Switch)	1NO 1NC	—	2308
40	BFS-05 / B / T	Twin Foot Switch; 15Amp. 250V AC	1NO 1NC	—	5985
41	BFS-05 / B / C2.2	15Amp. 250V AC (Micro Switch) with 2 core 2 meter wire	1NO 1NC	—	2400
42	BFS-05 / X	10Amp. 500V AC	1NO 1NC	—	2418
43	BFS-05 / X / T	Twin Foot Switch; 10Amp. 500V AC	1NO 1NC	—	6235
44	BFS-05 / X / C2.2	10Amp. 500V AC with 2 core 2 meter wire	1NO 1NC	—	2545
45	BFS-05 / XX	10Amp. 500V AC	2NO 2NC	—	2625
46	BFS-05 / XX / T	Twin Foot Switch; 10Amp. 500V AC	2NO 2NC	—	6610
47	BFS-05 / Z / C2.2	Push to ON; Push to OFF 10Amp. 250V AC with 2 core 2 meter wire	P O P O	∅	2830
48	BFS-05 / Z / C2.4	Push to ON; Push to OFF 10Amp. 250V AC with 2 core 4 meter wire	P O P O	∅	2955
49	BFS-05 / Z / C2.6	Push to ON; Push to OFF 10Amp. 250V AC with 2 core 6 meter wire	P O P O	∅	3080
BFS - 06 Series					
50	BFS-06 / C2.2	6Amp. 250V AC Capsule type with 2 core 2 meter wire	P O P O	∅	1050
BFS - 07 Series					
51	BFS-07 / Y	10Amp. 250V AC Trigger type	1NO 1NC	∅	1150
BFS - 08 Series					
52	BFS-08 / LS	10Amp. 500V AC Heavy Duty Foot Switch	2 NO 2 NC	—	4235
53	BFS-08 / LS / C4.2 / WP	10Amp. 500V AC with 4 core 2 meter wire and water proof foot switch	2NO 2NC	∅	6735
54	BFS-08 / LS / YB	10Amp. 500V AC Heavy Duty Foot Switch (Left Pedal Yellow, Right Pedal Blue)	2NO 2NC	∅	4500
55	BFS-08 / LS / C3.3 / YB	10Amp. 500V AC Heavy Duty Foot Switch with 3 core 3 meter wire (Left Pedal Yellow, Right Pedal Blue)	2NO 2NC	∅	4925
56	BFS-08 / LS / H	10Amp. 500V AC Heavy Duty Foot Switch with Handle	2NO 2NC	—	5625
57	BFS-08 / LS / H / LYRB	10Amp. 500V AC Heavy Duty Foot Switch with Handle with Left Pedal Yellow & Right Pedal Blue	2NO 2NC	∅	6225
58	BFS-08 / BE / LYRB / G2 /	10Amp. 500V AC Heavy Duty Foot Switch with Handle	2NO 2NC	∅	12645
59	BFS-08 / X2	10Amp. 500V AC Heavy Duty Foot Switch with Double Pedal	2NO 2NC	—	4460
60	BFS-08 / XX2	10Amp. 500V AC Heavy Duty Foot Switch with Handle, Without Guard	4NO 4NC	—	4895
61	BFS-08 / LS / YB / DR22	10Amp. 500V AC Heavy Duty Foot Switch (Left Pedal Yellow, Right Pedal Blue) with 22mm Drill at cable entry instead of glad	2NO 2NC	∅	4935
BFS - 09 Series					
62	BFS-09 / LS	10Amp. 500V AC Heavy Duty Foot Switch	2NO 2NC	—	4835
63	BFS-09 / LS / C4.2 / WP	10Amp. 500V AC with 4 core 2 meter wire and water proof foot switch	2NO 2NC	∅	7335
64	BFS-09 / X2	10Amp. 500V AC Heavy Duty Foot Switch with Guard	2NO 2NC	—	5065
65	BFS-09 / XX2	10Amp. 500V AC Heavy Duty Foot Switch with Double Pedal	4NO 4NC	—	5495

Note: ∅ - Delivery period will be 5 to 6 weeks

WITH EFFECT FROM : 15th October 2021

Terms and Conditions :

1. This Price List supersedes all our previous Price Lists.
2. Prices are subject to change without prior notice.
3. FOR Ex Factory/Godown (P&F and Freight charges will be extra).
4. All disputes, if any, are Subject to Mumbai Jurisdiction only.
5. No Warrant/Guarantee for burning or damage of the products.



BRISK INDUSTRIES PVT LTD

Reg. Office: Unit No. 10, Gr. Floor, Madhani Estate, Senapati Bapat Marg, Dadar (W), Mumbai: 400 028
 Email ID: info@brisk.co.in / mumbai@brisk.co.in, Mobile: +91 9969012108 / 9969012108
 Factory : Plot No.: A/B, Junnar Taluka Ind. Co-Op Soc. Ltd., Kandali, Narayangoan, Pune: 412 412
 Email ID: pune@brisk.co.in, Mobile: 9600099786 / 9633672107, website: www.brisk.co.in
 Corporate Identity No. U28910MH2013PTC244175



FOOT SWITCHES

Sr. No.	Product Code	Description	No. Contact	Remark	MRP per Unit (Rs.)
BFS - 10 Series					
66	BFS-10 / X	10Amp. 500V AC Heavy Duty	1NO 1NC	—	3076
67	BFS-10 / XX	10Amp. 500V AC Heavy Duty	2NO 2NC	—	3285
68	BFS-10 / X / L	10Amp. 500V AC Heavy Duty with Latch	1NO 1NC	—	3989
69	BFS-10 / XX / L	10Amp. 500V AC Heavy Duty with Latch	2NO 2NC	—	4215
70	BFS-10 / X2	10Amp. 500V AC Heavy Duty	2NO 2NC	—	3355
71	BFS-10 / XX2	10Amp. 500V AC Heavy Duty	4NO 4NC	—	3738
72	BFS-10 / XX / P5K	Foot Switch with 5K Ohms POT	2NO 2NC	Ø	7445
73	BFS-10 / XX / P10K	Foot Switch with 10K Ohms POT	2NO 2NC	Ø	7445
BFS - 11 Series					
74	BFS-11 / X	10Amp. 500V AC Heavy Duty	1NO 1NC	—	2759
75	BFS-11 / XX	10Amp. 500V AC Heavy Duty	2NO 2NC	—	2968
76	BFS-11 / X / L	10Amp. 500V AC Heavy Duty with Latch	1NO 1NC	—	3675
77	BFS-11 / XX / L	10Amp. 500V AC Heavy Duty with Latch	2NO 2NC	—	3898
78	BFS-11 / X2	10Amp. 500V AC Heavy Duty, with 3 Position	2NO 2NC	—	3075
79	BFS-11 / XX2	10Amp. 500V AC Heavy Duty, with 3 Position	4NO 4NC	—	3425
80	BFS-11 / XX / P5K	Foot Switch with 5K Ohms POT	2NO 2NC	Ø	7125
81	BFS-11 / XX / P10K	Foot Switch with 10K Ohms POT	2NO 2NC	Ø	7125
BFS - 12 Series					
82	BFS-12 / X	10Amp. 500V AC Heavy Duty	1NO 1NC	—	3900
83	BFS-12 / XX	10Amp. 500V AC Heavy Duty	2NO 2NC	—	4118
84	BFS-12 / X / L	10Amp. 500V AC Heavy Duty with Latch	1NO 1NC	—	4761
85	BFS-12 / XX / L	10Amp. 500V AC Heavy Duty with Latch	2NO 2NC	—	4988
86	BFS-12 / X2	10Amp. 500V AC Heavy Duty, with 3 Position	2NO 2NC	—	4334
87	BFS-12 / XX2	10Amp. 500V AC Heavy Duty, with 3 Position	4NO 4NC	—	4768
88	BFS-12 / XX / P5K	Foot Switch with 5K Ohms POT	2NO 2NC	Ø	8696
89	BFS-12 / XX / P10K	Foot Switch with 10K Ohms POT	2NO 2NC	Ø	8696
90	BFS-12 / X / PC	10Amp. 500V AC Heavy Duty, with PC Cover	1NO 1NC	—	3308
91	BFS-12 / XX / PC	10Amp. 500V AC Heavy Duty, with PC Cover	2NO 2NC	—	3524
92	BFS-12 / X / L / PC	10Amp. 500V AC Heavy Duty with Latch	1NO 1NC	—	3391
93	BFS-12 / XX / L / PC	10Amp. 500V AC Heavy Duty with Latch	2NO 2NC	—	3598
94	BFS-12 / X2 / PC	10Amp. 500V AC Heavy Duty, with PC Cover	2NO 2NC	—	3646
95	BFS-12 / XX2 / PC	10Amp. 500V AC Heavy Duty, with PC Cover	4NO 4NC	—	4045
96	BFS-12 / XX / P5K / PC	Foot Switch with 5K Ohms POT	2NO 2NC	Ø	7689
97	BFS-12 / XX / P10K / PC	Foot Switch with 10K Ohms POT	2NO 2NC	Ø	7689
98	BFS-12 / Z / C2.2 / PC	Foot Switch with 2 core 2 meter wire & POPO SWITCH, with PC Cover	2NO 2NC	Ø	4243
98	BFS-12 / PNP / NO / DC	Foot Switch with PNP type Proximity Sensor		Ø	5150
99	BFS-12 / NPN / NO / DC	Foot Switch with NPN type Proximity Sensor		Ø	5150
BFS - 13 Series					
100	BFS-13 / A	10Amp. 250V AC without wire	1NO 1NC	—	606
101	BFS-13 / A / C2.2	10Amp. 250V AC with 2 core 2 meter wire	1NO 1NC	—	731
102	BFS-13 / A / C2.3	10Amp. 250V AC with 2 core 3 meter wire	1NO 1NC	—	806
103	BFS-13 / Z / C2.2	Push to ON; Push to OFF 10Amp. 250V AC with 2 core 2 meter wire	PO PO	Ø	969
104	BFS-13 / Z / C2.6	Push to ON; Push to OFF 10Amp. 250V AC with 2 core 6 meter wire	PO PO	Ø	1219

Note: Ø - Delivery period will be 5 to 6 weeks

WITH EFFECT FROM : 15th October 2021

Terms and Conditions :

1. This Price List supersedes all our previous Price Lists.
2. Prices are subject to change without prior notice.
3. FOR Ex Factory/Godown (P&F and Freight charges will be extra).
4. All disputes, if any, are Subject to Mumbai Jurisdiction only.
5. No Warrant/Guarantee for burning or damage of the products.

BRISK INDUSTRIES PVT LTD

Reg. Office: Unit No. 10, Gr. Floor, Madhani Estate, Senapati Bapat Marg, Dadar (W), Mumbai: 400 028
Email ID: info@brisk.co.in / mumbai@brisk.co.in, Mobile: +91 9969012108 / 9969012106
Factory : Plot No : A/8, Jumar Taluka Ind. Co-Op Soc. Ltd., Kandali, Narayangan, Pune: 412 412
Email ID: pune@brisk.co.in, Mobile: 8600095788 / 9833872107, website: www.brisk.co.in
Corporate Identity No. U28910MH2013PTC244175



FOOT SWITCHES

Sr. No.	Product Code	Description	No. Contact	Remark	MRP per Unit (Rs.)
BFS - 14 Series					
105	BFS-14 / LS	10 Amps. 500V AC	1NO 1NC	—	1665
106	BFS-14 / LS / C3.2 / WP	10 Amps. 500V AC with 3 core 2 meter wire and water proof foot switch	1NO 1NC	∅	4050
BFS - 15 Series					
107	BFS-15 / LS	10 Amps. 500V AC	1NO 1NC	—	2880
108	BFS-15 / LS / C3.2 / WP	10 Amps. 500V AC with 3 core 2 meter wire and water proof foot switch	1NO 1NC	∅	5266
BFS - 16 Series					
109	BFS - 16 / B	15 Amp. 250V AC, without wire	1NO 1NC	—	851
110	BFS - 16 / B / C2.2	15 Amp. 250V AC, with 2 core 2 meter wire	1NO 1NC	—	976
BFS - 17 Series					
111	BFS-17	6 Amp. 250V AC	1NO 1NC	∅	451
112	BFS-17 / C2.2	6 Amp. 250V AC with 2 core 2 meter wire	1NO 1NC	∅	576
BFS - 18 Series					
113	BFS-18 / LS	10 Amp. 500V AC, 2 DPDT-CO	2NO 2NC	—	6765
114	BFS-18 / LS / C4.2 / WP	10Amp. 500V AC with 4 core 2 meter wire and water proof foot switch	2NO 2NC	∅	9275
115	BFS-18 / X2	10 Amp. 500V AC, 2 SPDT-DB	2NO 2NC	—	7115
116	BFS-18 / XX2	10 Amp. 500V AC, 2 DPDT-DB	4NO 4NC	—	7625
BFS - 19 Series					
117	BFS-19/LS	10 Amp. 500V AC, 2 DPDT-CO	1NO 1NC	—	1980
118	BFS-19 / LS / C3.2 / WP	10 Amps. 500V AC with 3 core 2 meter wire and water proof foot switch	1NO 1NC	∅	4480
BFS - 20 Series					
119	BFS-20/LS	10 Amp. 500V AC, DPDT-Com, wall mounting	1NO 1NC	∅	4961
120	BFS-20/X	10 Amp. 500V AC, SPDT-DB, wall mounting	1NO 1NC	∅	5293
121	BFS-20/XX	10 Amp. 500V AC, DPDT-DB, wall mounting	2NO 2NC	∅	5624
BFS - 21 Series					
122	BFS-21/B	15 Amp. 250V AC, SPDT	1NO 1NC	—	2145
123	BFS-21/X	10 Amp. 500V AC, SPDT-DB	1NO 1NC	—	2219
124	BFS-21/XX	10 Amp. 500V AC, DPDT-DB	2NO 2NC	—	2406
BFS - 22 Series					
125	BFS-22/B	15 Amp. 250V AC, SPDT	1NO 1NC	—	2438
126	BFS-22/X	10 Amp. 500V AC, SPDT-DB	1NO 1NC	—	2515
127	BFS-22/XX	10 Amp. 500V AC, DPDT-DB	2NO 2NC	—	2700

Note: ∅ - Delivery period will be 5 to 6 weeks

WITH EFFECT FROM : 15th October 2021

Terms and Conditions :

1. This Price List supersedes all our previous Price Lists.
2. Prices are subject to change without prior notice.
3. FOR Ex Factory/Godown (P&F and Frieght charges will be extra).
4. All disputes,if any, are Subject to Mumbai Jurisdiction only.
5. No Warrant/Guarantee for burning or damage of the products.

Safety Light Curtain -**(Parallel type for Hand / Object detection)**

Sr. No.	Description	Over all Height (in mm)	Protected Height (in mm)	Dual Output (PNP-NC)	MRP per Unit (Rs.)
				Order Code (Standard Model)	
1	6 Channel 6 Parallel beams (20mm pitch)	180	100	BLCD-L-6-20	19800
2	12 Channel 12 Parallel beams (20mm pitch)	300	220	BLCD-L-12-20	30500
3	18 Channel 18 Parallel beams (20mm pitch)	420	340	BLCD-L-18-20	41213
4	24 Channel 24 Parallel beams (20mm pitch)	540	460	BLCD-L-24-20	51925
5	30 Channel 30 Parallel beams (20mm pitch)	660	580	BLCD-L-30-20	66200
6	36 Channel 36 Parallel beams (20mm pitch)	780	700	BLCD-L-36-20	76913
7	6 Channel 6 Parallel beams (30mm pitch)	250	150	BLCD-L-6-30	21225
8	12 Channel 12 Parallel beams (30mm pitch)	430	330	BLCD-L-12-30	32300
9	18 Channel 18 Parallel beams (30mm pitch)	610	510	BLCD-L-18-30	43000
10	24 Channel 24 Parallel beams (30mm pitch)	790	690	BLCD-L-24-30	53350
11	30 Channel 30 Parallel beams (30mm pitch)	970	870	BLCD-L-30-30	68000
12	36 Channel 36 Parallel beams (30mm pitch)	1150	1050	BLCD-L-36-30	80488
13	6 Channel 6 Parallel beams (40mm pitch)	300	200	BLCD-L-6-40	22200
14	12 Channel 12 Parallel beams (40mm pitch)	540	440	BLCD-L-12-40	33875
15	18 Channel 18 Parallel beams (40mm pitch)	780	680	BLCD-L-18-40	45125
16	24 Channel 24 Parallel beams (40mm pitch)	1020	920	BLCD-L-24-40	55950
17	30 Channel 30 Parallel beams (40mm pitch)	1260	1160	BLCD-L-30-40	71375
18	36 Channel 36 Parallel beams (40mm pitch)	1500	1400	BLCD-L-36-40	84375

Controller

Sr. No.	Description	Input Voltage	Relay Type (2NO+2NC)	Order Code	MRP per Unit (Rs.)
1	Wall Mount Controller for Safety Light Curtain	110 VAC	Normal	BLCC-P-110	11875
2	Wall Mount Controller for Safety Light Curtain	230 VAC	Normal	BLCC-P-230	11250
3	Wall Mount Controller for Safety Light Curtain	110 VAC	Safety	BLCC-P-110-SR	14375
4	Wall Mount Controller for Safety Light Curtain	230 VAC	Safety	BLCC-P-230-SR	13750

WITH EFFECT FROM : 15th October 2021

Terms and Conditions :

1. This Price List supersedes all our previous Price Lists.
2. Prices are subject to change without prior notice.
3. FOR Ex Factory/Godown (P&F and Frieght charges will be extra).
4. All disputes,if any, are Subject to Mumbai Jurisdiction only.
5. No Warrant/Guarantee for burning or damage of the products.

BRISK INDUSTRIES PVT LTD

Reg. Office: Unit No. 10, Gr. Floor, Madhani Estate, Senapati Bapat Marg, Dadar (W), Mumbai: 400 028
Email ID: info@brisk.co.in / mumbai@brisk.co.in, Mobile: +91 9969012108 / 9969012106
Factory : Plot No.: A/8, Jumar Taluka Ind. Co-Op Soc. Ltd., Kandali, Narayanganj, Pune: 412 412
Email ID: pune@brisk.co.in, Mobile: 8600095788 / 9833872107, website: www.brisk.co.in
Corporate Identity No. U28910MH2013PTC244175



SWITCH MODE POWER SUPPLY (SMPS) PANEL MOUNT

Sr. No.	Product Code	Description	Minimum Order Qty (Nos.)	MRP per Unit (Rs.)
Standard Series - Panel Mount				
1	SES - 60 - 24	SMPS - 60 watt, Output 24VDC @ 2.5Amps.max	10	2715
2	SES - 120 - 24	SMPS - 120 watt, Output 24VDC @ 5Amps.max	10	3181
3	SES - 150 - 24	SMPS - 150 watt, Output 24VDC @ 6.25mps.max	10	3693
Premium Series - Panel Mount				
4	PES - 50 - 24	SMPS - 50 watt, Output 24VDC @ 2.1Amps.	5	3648
5	PES - 100 - 24	SMPS - 100 watt, Output 24VDC @ 4.2Amps.	5	4608
6	PES - 120 - 24	SMPS - 120 watt, Output 24VDC @ 5mps.	5	5235

SWITCH MODE POWER SUPPLY (SMPS) DIN RAIL MOUNT

Sr. No.	Product Code	Description	Minimum Order Qty (Nos.)	MRP per Unit (Rs.)
Standard Series - Din Rail Mount				
7	SDR - 75 - 24 - 110	SMPS - 75 watt, Output 24VDC @ 3.13Amps.max, Input 110 VAC	10	4150
8	SDR - 75 - 24 - 230	SMPS - 75 watt, Output 24VDC @ 3.13Amps.max, Input 230 VAC	10	4146
9	SDR - 150 - 24 - 110	SMPS - 150 watt, Output 24VDC @ 6.25Amps.max, Input 110 VAC	10	4625
10	SDR - 150 - 24 - 230	SMPS - 150 watt, Output 24VDC @ 6.25Amps.max, Input 230 VAC	10	4451
Premium Series - Din Rail Mount				
11	PDR - 60 - 24 - 110	SMPS - 60 watt, Output 24VDC @ 2.5Amps.max, Input 110 VAC	5	5165
12	PDR - 60 - 24 - 230	SMPS - 60 watt, Output 24VDC @ 2.5Amps.max, Input 230 VAC	5	4914
13	PDR - 120 - 24 - 110	SMPS - 120 watt, Output 24VDC @ 5.0Amps.max, Input 110 VAC	5	5920
14	PDR - 120 - 24 - 230	SMPS - 120 watt, Output 24VDC @ 5.0Amps.max, Input 230 VAC	5	5458

WITH EFFECT FROM : 15th October 2021

Terms and Conditions :

1. This Price List supersedes all our previous Price Lists.
2. Prices are subject to change without prior notice.
3. FOR Ex Factory/Godown (P&F and Frieght charges will be extra).
4. All disputes,if any, are Subject to Mumbai Jurisdiction only.
5. No Warrant/Guarantee for burning or damage of the products.



Dealer's and Stockist of :



All Electrical needs under one Roof
Everything in Electrical Goods

HEAD OFFICE

251-A/3B, 2ndFloor,
Mangaldas Building, Luhar Chawl,
Mangaldas Road, Mumbai - 400 002.
Tel. : 022-40060261

BHOSARI BRANCH

Shop -10, Jay Tulja Bhavani Complex,
Plot No. BG 74A, Opp. Century Enka,
Telco Road, MIDC Bhosari, Pune - 411026.
E-mail : reliablepune26@gmail.com

CHAKAN BRANCH

Plot No.A-15, Phase-II,
MIDC Chakan Industrial area,
Near Hyundai, Sawardhari, Taluka Khed,
Dist. Pune-410501.
E-mail : info@reliablepune.com

CUSTOMER CARE :

+91 020 27110099
customercare@reliablepune.com