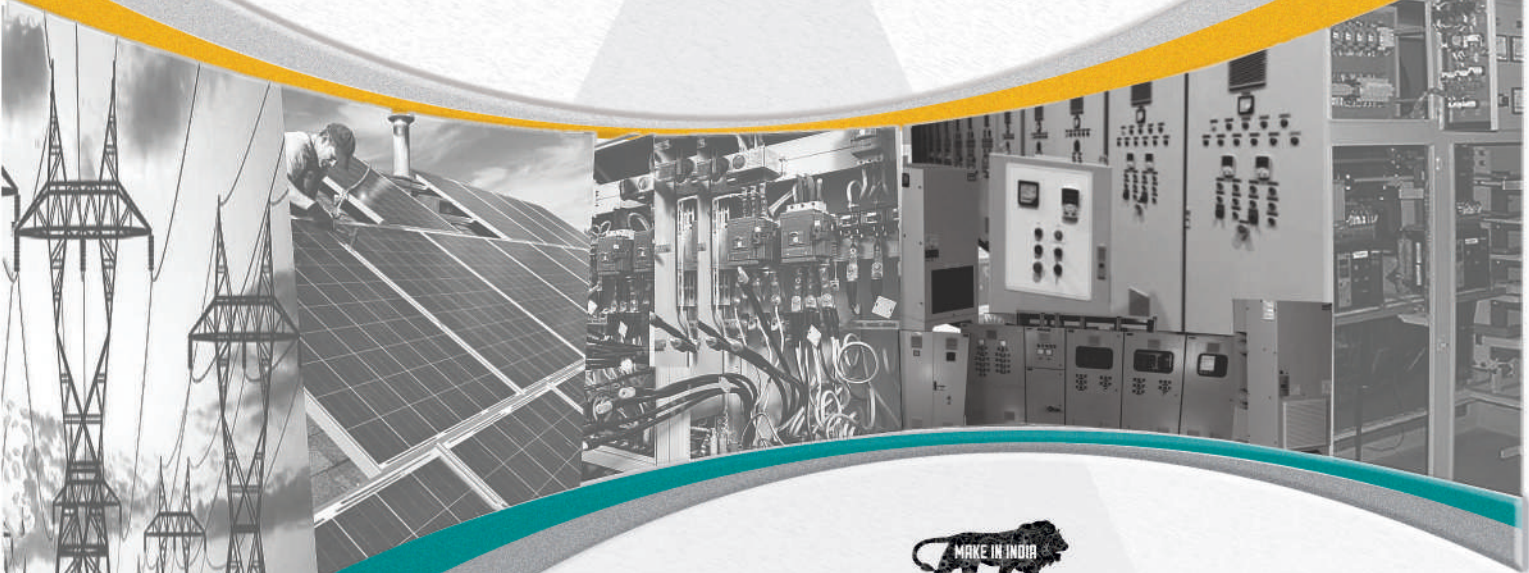




ELETTRO[®]

Built For
The Challenge

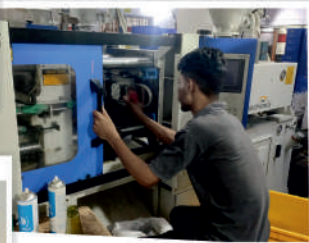


CE  ROHS'  IP 54 IP 55 IP 65 IP 67



ELETTRO[®]

Built For
The Challenge



We warmly look forward to establishing, reinforcing & expanding long term relationship with the reliable client's globally.



Established under the team of experience for more than 10 years. **ELETTRO** has created its presence in both domestic & international market's. We as an professional manufacture os Air-Vent, SS & PA 66 Cable ties, ABS / IP 65 Junction Box , Push Button Station, Camera Box, Fan Finger Guard, MCB Channel, Toggle Switches, L.T. Control Switches, Polyamide Conduit flexible Gland & Pipe. MC 4 Connector, Polyamide Handle, Self Adhesive Gasket Tape, Lock's, Hinges.We integrate R & D, Innovation, Creation, manufacturing & sales together.

ELETTRO is been empowered with a team of more then 75 employees in our company including 8 administrators, 5 intermediate & perfect moulds, thermoplastic injections, pressing & hardware parts, Each of our products is a high-end one, designed, developed & produced by complete implementation of International Organization for Standardization.

ELETTRO have a network of more then 200 Dealers & 250 OEMS across INDIA, We also into export to various Country like U.A.E., SINGAPORE, MALAYSIA, CANADA, BANGLADESH & SOUTHEAST ASIA etc...

ELETTRO GROWTH STRATEGY

- Customized Products.
- Pre-after sales assistance
- Quality that speaks itself
- Monitoring of Customer's satisfaction & feedback.
- Think strategically
- Understand the Relationship between New Technologies & Cost Efficiencies.



SELF LOCKING PA 66 CABLE TIES

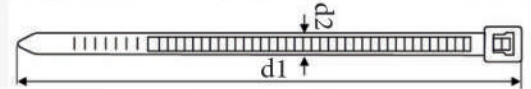
CE ROHS⁺ HSN CODE: 39235090

STANDARD SERIES

PRODUCT CODE	STD PKG	STD PKG (PCS/PAC)	Price List	NOMINAL OVERALL LENGTH		STRAP WIDTH		MAX BUNDLE CABLE DIAMETER		THICKNESS	MIN LOOP TENSILE STRENGTH	
	PIECES/PAC	CTN/PAC		d1 mm	inch	d2 mm	inch	mm	inch		mm	kgf
ET 100 x 2.5	100	600	45.00	100	4	2.5	0.10	20	0.79	0.9	8	18
	1000	60	410.00									
ET 150 x 2.5	100	400	67.00	150	6	2.5	0.10	35	1.38	1.2	8	18
ET 150 x 3.6	100	300	110.00	150	6	3.6	0.14	35	1.38	1.2	18	40
ET 200 x 3.6	100	200	132.00	200	8	3.6	0.14	45	1.77	1.2	18	40
ET 200 x 4.8	100	150	195.00	200	8	4.8	0.19	45	1.77	1.3	23	50
ET 250 x 3.6	100	150	175.00	250	10	3.6	0.14	65	2.56	1.2	18	40
ET 250 x 4.8	100	150	230.00	250	10	4.8	0.19	60	2.36	1.3	23	50
ET 300 x 3.6	100	150	215.00	300	12	3.6	0.14	75	2.95	1.2	18	40
ET 300 x 4.8	100	150	310.00	300	12	4.8	0.19	75	2.95	1.3	23	50
ET 300 x 7.6	100	60	610.00	300	12	7.6	0.30	75	2.95	1.4	54.4	120
ET 350 x 4.8	100	120	340.00	350	14	4.8	0.19	90	3.60	1.3	23	50
ET 400 x 4.8	100	90	425.00	400	16	4.8	0.19	105	4.20	1.3	23	50
ET 450 x 4.8	100	60	455.00	450	18	4.8	0.19	115	4.53	1.3	23	50



Technical Details	
• Material	PA 66 UL Certified 94V-2
• Operating Temp	-10°C to 130°C
• Oxygen Index	25% - 28%
• Smoke Density	Flaming 35 No Flaming 13



Note:

- Price For Black Colour Cable Ties Will be 2.5% Additional
- Price For Coloured Cable Ties Will be 15% Additional
- Price For Weather Proof UV Cable Ties Will be 25% Additional
- Payment Terms 15 Days Credit From the Date of Invoice

TAG TYPE SERIES

HSN CODE: 39235090

PRODUCT CODE	PIECES/PAC	CTN/PAC	PER/PAC	d1 mm	inch	d2 mm	inch	mm	inch	mm	kgf	lbs
ET-T 100 x 2.5	100	400	100.00	100	4	2.5	0.10	20	0.79	0.9	8	18
	1000	40	950.00									



CABLE TIE GUN

HSN CODE: 39269099



PRODUCT CODE	PIECES/PER BOX	CTN/PAC	PER/PC	Fit For Wide mm	Thickness mm
ET 600A	20	40	1290.00	2.2 to 4.8	up to 1.6

SCREW TYPE TIE MOUNT

HSN CODE: 39269099

PRODUCT CODE	STD PKG	PER/PC	SIZE (mm)	Mounting Method (mm)	For max. Cable Tie Width (mm)
ET 4 (PA)	100 Nos	2.60	22.5x16x9.8	6mm Screw	8.5
ET 4 (PPCP)	100 Nos	1.10	22.5x16x9.8	6mm Screw	8.5





S.S.316 ROLLER BALL 4.6 mm CABLE TIES

CE ROHS HSN CODE 73269060



PRODUCT CODE	STD PKG (PCS/PAC)	PRICE LIST PER/PC		NOMINAL OVERALL LENGTH		STRAP WIDTH		MAX DIAMETER SINGLE LOOP		THICKNESS	MIN LOOP TENSILE STRENGTH	
	PIECES/PAC	UNCOATED	COATED	mm	inch	mm	inch	mm	inch		mm	kgf
ET-ST100X4.6	100	11.00	12.75	100	4	4.6	0.18	27	1.1	0.25	68	150
ET-ST150X4.6	100	12.00	14.00	150	6	4.6	0.18	43	1.7	0.25	68	150
ET-ST200X4.6	100	12.50	14.50	200	8	4.6	0.18	59	2.3	0.25	68	150
ET-ST260X4.6	100	14.50	17.00	250	10	4.6	0.18	75	3	0.25	68	150
ET-ST300X4.6	100	15.00	17.50	300	12	4.6	0.18	86	3.4	0.25	68	150
ET-ST360X4.6	100	15.50	18.00	360	14.4	4.6	0.18	97	3.95	0.25	68	150
ET-ST450X4.6	100	17.50	20.25	450	18	4.6	0.18	121	4.95	0.25	68	150
ET-ST520X4.6	100	19.00	22.00	520	20.8	4.6	0.18	140	5.72	0.25	68	150
ET-ST620X4.6	100	23.00	26.00	620	24.8	4.6	0.18	167	6.82	0.25	68	150
ET-ST680X4.6	100	25.00	33.00	680	27.20	4.6	0.18	183	7.48	0.25	68	150
ET-ST840X4.6	100	27.00	36.00	840	33.6	4.6	0.18	227	9.25	0.25	68	150
ET-ST1000X4.6	100	28.50	38.00	1000	40	4.6	0.18	270	11	0.25	68	150

S.S.316 ROLLER BALL 7.9 mm CABLE TIES

CE ROHS HSN CODE 73269060

PRODUCT CODE	PIECES/PAC	PRICE LIST PER/PC		NOMINAL OVERALL LENGTH		STRAP WIDTH		MAX DIAMETER SINGLE LOOP		THICKNESS	MIN LOOP TENSILE STRENGTH	
		UNCOATED	COATED	mm	inch	mm	inch	mm	inch		mm	kgf
ET-ST100X7.9	100	16.00	19.75	100	4	7.9	0.32	27	1.1	0.25	136	300
ET-ST150X7.9	100	17.00	21.90	150	6	7.9	0.32	43	1.7	0.25	136	300
ET-ST200X7.9	100	19.25	25.00	200	8	7.9	0.32	59	2.3	0.25	136	300
ET-ST260X7.9	100	20.00	26.25	250	10	7.9	0.32	75	3.0	0.25	136	300
ET-ST300X7.9	100	24.00	31.00	300	12	7.9	0.32	86	3.4	0.25	136	300
ET-ST360X7.9	100	25.50	32.50	360	14.4	7.9	0.32	97	3.95	0.25	136	300
ET-ST400X7.9	100	27.70	39.00	400	16	7.9	0.32	118	4.60	0.25	136	300
ET-ST520X7.9	100	31.00	45.00	520	20.8	7.9	0.32	140	5.72	0.25	136	300
ET-ST620X7.9	100	35.00	51.00	620	24.8	7.9	0.32	167	6.82	0.25	136	300
ET-ST680X7.9	100	36.00	54.50	680	27.20	7.9	0.32	183	7.48	0.25	136	300
ET-ST840X7.9	100	43.50	66.00	840	33.6	7.9	0.32	227	9.25	0.25	136	300
ET-ST1000X7.9	100	51.00	77.50	1000	40	7.9	0.32	270	11.0	0.25	136	300





AIR - VENT

CE ROHS HSN CODE: 84213100

(VALUE & ECONOMIC SERIES)

CAT No.	ITEM	PRICE	Std Pkg
ETAV-01	130mmX130mm (SCREW FIT)	56.00	300 Nos
ETAV-01 VP	130mmX130mm(SCREW FIT) (VALUE PACK-10 Nos.)	515.00	30 Packs
ETAV-02	147mmX147mm (SNAP FIT)	82.00	200 Nos
ETAV-02 VP	147mmX147mm (SNAP FIT) (VALUE PACK-10 Nos.)	740.00	24 Packs
ETAV-03	184mmX184mm (SCREW FIT)	150.00	150 Nos
ETAV-03 VP	184mmX184mm (SCREW FIT) (VALUE PACK-10 Nos)	1305.00	16 Packs
ETAV-04	203mmX203mm (SNAP FIT)	190.00	100 Nos
ETAV-04 VP	203mmX203mm (SNAP FIT) (VALUE PACK-10 Nos.)	1770.00	12 Packs
ETAV-05	238mmX238mm (SCREW FIT)	260.00	60 Nos
ETAV-05 VP	238mmX238mm (SCREW FIT) (VALUE PACK-5 Nos.)	1200.00	12 Packs
ETAV-06	255mmX255mm (SNAP FIT)	350.00	60 Nos
ETAV-06 VP	255mmX255mm (SNAP FIT) (VALUE PACK-5 Nos.)	1650.00	12 Packs
ETAV-09	325mmX325mm (SNAP FIT)	690.00	25 Nos
ETAV-10	117mmx117mm (SNAP FIT)	75.00	100 Nos
ETAV-11	90mmX90mm (SCREW FIT)	54.00	200 Nos
ETAV-204/DT	204mmX204mm (DOOM TYPE)	255.00	50 Nos



Colour Shade - RAL-7032 / 7035

AIR - VENT (OVAL DESIGN)

(PREMIUM SERIES)

CE ROHS HSN CODE: 84213100



CAT No.	ITEM	PRICE	Std Pkg
ETAV-130/4	130mm x 130mm (SCREW FIT)	68.00	300 Nos
ETAV-150/SF-4	150mm x 150mm (SNAP FIT)	93.00	200 Nos
ETAV-184/6	184mm x 184mm (SCREW FIT)	180.00	150 Nos
ETAV-204/SF-4/6	204mm x 204mm (SNAP FIT)	210.00	100 Nos
ETAV-238/8	238mm x 238mm (SCREW FIT)	315.00	60 Nos
ETAV-255/SF-6/8	255mm x 255mm (SNAP FIT)	370.00	60 Nos

Colour Shade - RAL7035

(WITH E.P.D.M GASKETING)

CE ROHS IP 54 / 55 HSN CODE: 84213100

CAT No.	ITEM	PRICE	Std Pkg
ETAV150/SF-4 EG	150mmX150mm (With E.P.D.M GASKETING)	145.00	100 Nos
ETAV204/SF-4/6 EG	204mmX204mm (With E.P.D.M GASKETING)	275.00	100 Nos
ETAV255/SF-6/8 EG	255mmX255mm (With E.P.D.M GASKETING)	450.00	50 Nos
ETAV117/SF-3/3.5 EG	117mmX117mm (With E.P.D.M GASKETING)	90.00	100 Nos
ETAV204/DT-1 EG	204mmX204mm (With E.P.D.M Gasketing) (Doom Type)	300.00	50 Nos



Colour Shade - RAL7035



JUNCTION BOX

CE ROHS HSN CODE: 85359040

P. S JUNCTION BOX W/O Connector IP-65

CAT No.	ITEM	PRICE	Std Pkg
ET-9020	88mmX88mmX53mm	145.00	100 Nos
ET-9040	98mmX98mmX61mm	185.00	100 Nos
ET-9060	139mmX119mmX70mm	320.00	50 Nos
ET-9100	167mmX125mmX82mm	470.00	30 Nos
ET-9250	200mmX160mmX98mm	635.00	30 Nos
ET-9350	260mmX210mmX117mm	1300.00	10 Nos



Colour Shade - RAL-7035

Material-P.S

CAT No.	ITEM	PRICE	Std Pkg
ET-9020E	88mmX88mmX53mm With Connector 2.5sq.mm	180.00	100 Nos
ET-9040E	98mmX98mmX61mm With Connector 4/6sq.mm	220.00	100 Nos
ET-9060E	139mmX119mmX70mm With Connector 10sq.mm	393.00	50 Nos
ET-9100E	167mmX125mmX82mm With Connector 16sq.mm	715.00	30 Nos
ET-9250E	200mmX160mmX98mm With Connector 16/25 sq.mm	1133.00	30 Nos
ET-9350E	260mm x 210mm x117mm With Connector 16/25 sq.mm	-----	10 Nos

A.B.S JUNCTION BOX With IP-55/65

HSN CODE: 85359040 CE ROHS



Colour Shade - RAL-7035

Material-A.B.S

CAT No.	ITEM	Without Gourmet Price	Transparent Price	Std Pkg
ET-10107	100mmX100mmX70mm	95.00	132.00	150 Nos
ET-15117	150mmX110mmX70mm	155.00	193.00	75 Nos
ET-15157	150mmX150mmX70mm	180.00	220.00	75 Nos
ET-20107	200mmX100mmX70mm	185.00	231.00	50 Nos
ET-20168	200mmX155mmX80mm	235.00	285.00	50 Nos
ET-26208	255mmX200mmX80mm	340.00	440.00	30 Nos
ET-302512	300mmX250mmX120mm	625.00	1000.00	20 Nos
ET-302515	300mmX250mmX150mm	690.00	1040.00	10 Nos
ET-403512	400mmX350mmX120mm	1350.00	1540.00	7 Nos

A.B.S JUNCTION BOX With IP-67

CE ROHS HSN CODE: 85359040

CAT No.	ITEM	With Gourmet Price	Transparent Price	Std Pkg
ET-6001	110mmX110mmX110mm	240.00	300.00	50 Nos
ET-6002	155mmX115mmX110mm	300.00	375.00	50 Nos



Material-A.B.S
Colour Shade - RAL-7035

PUSH BUTTON STATION

HSN CODE: 85369090 CE ROHS

Colour Shade - RAL-7035 Material-A.B.S

CAT No.	ITEM	PRICE	Std Pkg
ETPB-01	Push Button Station 1 Way	62.00	150 Nos
ETPB-02	Push Button Station 2 Way	82.00	120 Nos
ETPB-03	Push Button Station 3 Way	106.00	60 Nos
ETPB-04	Push Button Station 4 Way	122.00	60 Nos



CAMERA BOX

CE ROHS HSN CODE: 85359040

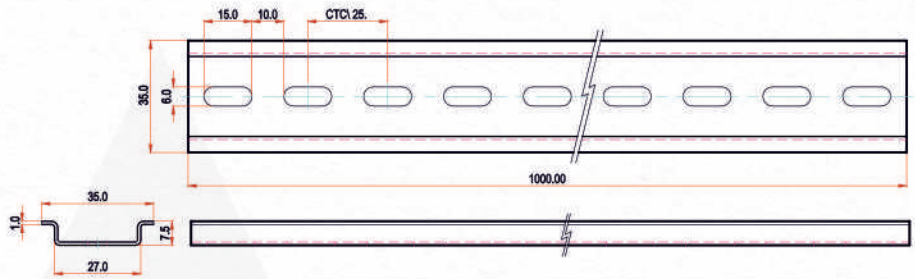
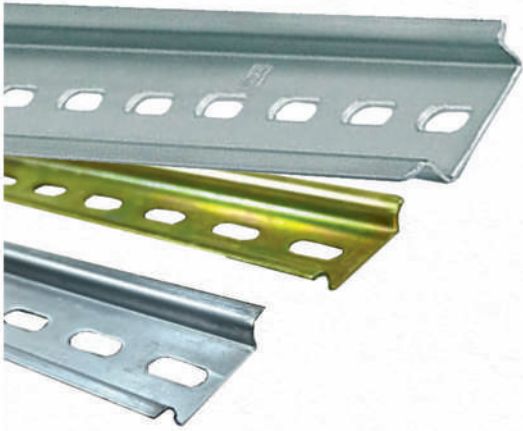


Material- P.P.
Colour Shade - White

CAT NO	SIZE	RATE/ PC	STD PACK
ETCB-01	100mmx100mmx70mm	53.00	200 NOS
ETCB-02	100mmx100mmx50mm	30.00	360 NOS

DIN RAIL MCB CHANNEL

CE ROHS⁺ HSN CODE: 85359090



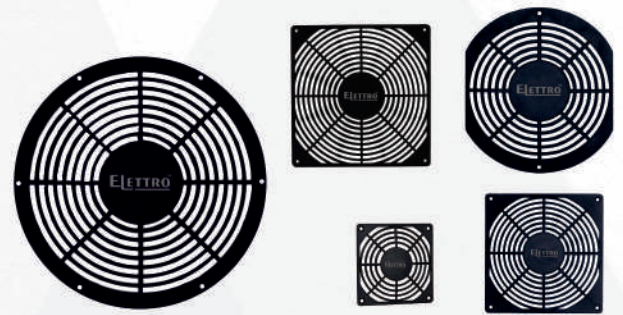
CAT No.	ITEM	PRICE	Std Pkg
ETMC-01	DIN RAIL MCB CHANNEL SIZE : 35mm x 7.5mm x 1mm	-----	100 Nos

Prices Are On Request

FAN FINGER GUARD

CE ROHS⁺ HSN CODE: 84149090

CAT NO	ITEM	PRICE	Std Pkg
ETFG-01	4 Inch Finger Guard	9.50	500 Nos
ETFG-02	6 Inch Finger Guard (Oval)	19.00	300 Nos
ETFG-03	6 Inch Finger Guard (Square)	20.00	300 Nos
ETFG-04	8 Inch Finger Guard (Oval)	39.00	300 Nos
ETFG-05	8 Inch Finger Guard (Square)	39.00	300 Nos
ETFG-06	3 Inch (80mmx80mm / Square)	8.50	500 Nos
ETFG-07	3.5 Inch (80mmx80mm / Square)	9.00	500 Nos
ETAB-01	Air breather	25.00	1000 Nos



Colour Shade - Black

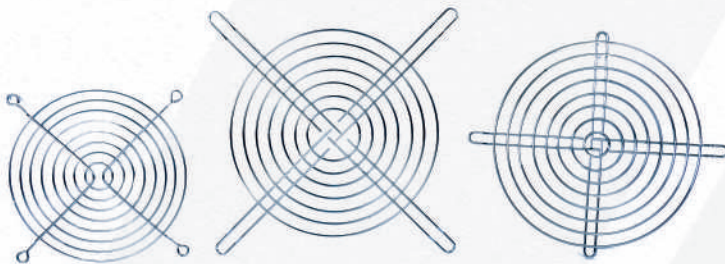
Screw Fit

Material-ABS

METAL FAN FINGER GUARD

CE ROHS⁺ HSN CODE 84149040

● Prices are on Request.



Colour Shade - Crome plated

Screw Fit

Material- M.S.

CAT NO	ITEM	Std Pkg
ETMG-01	4 Inch Metal Guard Square (Thk. 1.6mm - 8 Ring)	1000 Nos
ETMG-02	6 Inch Metal Guard Oval (Thk. 1.6mm - 7 Ring)	400 Nos
ETMG-03	6 Inch Metal Guard Square(Thk. 1.6mm - 8 Ring)	200 Nos
ETMG-04	8 Inch Metal Guard Oval (Thk. 1.6mm - 11 Ring)	200 Nos
ETMG-05	8 Inch Metal Guard Square(Thk. 1.6mm - 11 Ring)	200 Nos

DOCUMENT HOLDER

CE ROHS⁺ HSN CODE: 39261019

CAT No.	ITEM	PRICE	Std Pkg
ETDH-01	Small Document Holder (A-5 Size)	80.00	100 Nos
ETDH-02	Big Document Holder 35mm Deep (A-4 Size)	160.00	50 Nos
ETDH-03	Big Document Holder 17mm Deep (A-4 Size)	155.00	100 Nos



Colour Shade - RAL-7035

Material-A.B.S



TOGGLE SWITCHES

6A / 10A / 15A 250AC SINGLE & DOUBLE POLE

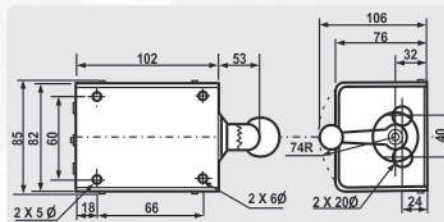


CAT NO	DESCRIPTION	RATING	TONIMAL	RATE/PC	STD PACK
ETS-601	SPST ON- OFF	6A	Screw	66.00	30 NOS
ETS-602	SPDT ON ON	6A	Screw	75.00	30 NOS
ETS-603	SPDT ON-OFF-ON	6A CENTRE OFF	Screw	75.00	30 NOS
ETS-606	DPST ON-OFF	6A	Screw	86.00	30 NOS
ETS-607	DPDT ON ON	6A	Screw	94.00	30 NOS
ETS-608	DPDT ON-OFF-ON	6A CENTRE OFF	Screw	94.00	30 NOS
ETS-1001	SPST ON- OFF	10A	Screw	72.00	30 NOS
ETS-1002	SPDT ON ON	10A	Screw	76.00	30 NOS
ETS-1003	SPDT ON-OFF-ON	10A CENTRE OFF	Screw	76.00	30 NOS
ETS-1006	DPST ON-OFF	10A	Screw	87.00	30 NOS
ETS-1007	DPDT ON ON	10A	Screw	95.00	30 NOS
ETS-1008	DPDT ON-OFF-ON	10A CENTRE OFF	Screw	95.00	30 NOS
ETS-1501	SPST ON- OFF	15A	Screw	88.00	30 NOS
ETS-1502	SPDT ON ON	15A	Screw	98.00	30 NOS
ETS-1503	SPDT ON-OFF-ON	15A CENTRE OFF	Screw	98.00	30 NOS
ETS-1506	DPST ON-OFF	15A	Screw	103.00	30 NOS
ETS-1507	DPDT ON ON	15A	Screw	120.00	30 NOS
ETS-1508	DPDT ON-OFF-ON	15A CENTRE OFF	Screw	120.00	30 NOS

L.T. CONTROL SWITCHES

RANG & SEQUENCE

RATING	ON-OFF	REVERSING	CHANGEOVER
16 Amps. 440 Volts AC 50 Hz.	SIT EO.16	SIT EO.16	SIT EO.16



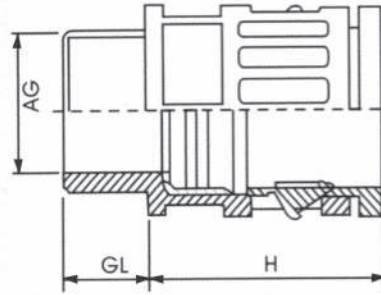
● Prices are on Request.

CAT NO	DESCRIPTION	STD.PKG
ET-16	BAKELITE HANDLE ROUND MODEL 16 AMP 440 V	50 NOS
ET-16SH	STEEL HANDLE ROUND MODEL 16 AMP 440 V	50 NOS
ET-32SH	32 AMP. 440V REVERSE FORWARD SWITCH WITH STEEL HANDLE	50 NOS



POLYAMIDE FLEXIBLE CONDUIT GLAND

CE ROHS⁺ HSN CODE: 39172190



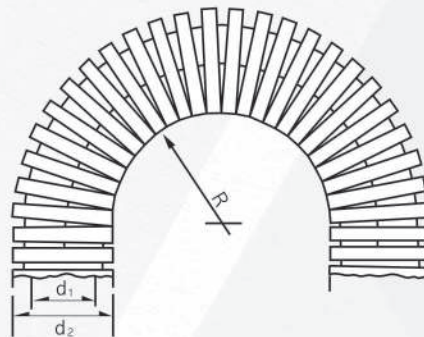
Technical Details :

Material	Polyamide 6
Temperature Range	-40°C to +105°C Continuous, +150°C Short Term
Resistant	Alcohol, Benzol, Greases, Mineral Oil, Diesel Fuel, Sea Water, Petrol, etc.
Approvals	CE ROHS ⁺

CAT NO BLACK	CONDUIT SIZE	PRICE LIST	PIECES/PAC	(AG)mm	(AG)mm Thread Length	(GL)mm	(H)mm
ETG-7	ETP-10	11.00	100	12.3	6.5	11.5	18
ETG-9	ETP-13.5	14.00	100	15	10	11.5	19
ETG-11	ETP-16	18.50	100	18.4	12.5	12	23
ETG-13.5	ETP-18.5	21.00	100	20.2	14.3	12	12
ETG-16	ETP-22	26.00	100	22.3	17.0	13	27
ETG-21	ETP-28	33.00	50	28	23	13	33
ETG-29	ETP-34	53.00	25	36.7	29	15	35
ETG-36	ETP-42	71.00	20	46.7	36	15	38.5
ETG-48	ETP-54	96.00	10	59	53	16	39

POLYAMIDE FLEXIBLE CONDUIT

CE ROHS⁺ HSN CODE: 39172190



Technical Details :

Material	Polyamide 6
Flexural Strength	950 kg / cm ²
Flexural Modulus	26,000 kg / cm ²
Tensile Strength	700 kg / cm ²
Impact Strength	25 kg / cm ²
Temperature Range	-40°C to +105°C Continuous, +150°C Short Term
Resistant	Alcohol, Benzol, Greases, Mineral Oil, Diesel Fuel, Sea Water, Petrol, etc.
Protection Class	IP 67
Approvals	CE ROHS ⁺

CAT NO BLACK	CONDUIT GLAND SIZE	PRICE/MTR	PACKING/MTR	ROLL/STD PACK	INNER DIAMETER d1 (mm)	OUTER DIAMETER d2 (mm)	BENDING RADIUS R (mm) ± 10%
ETP-10	ETG-7	28.00	100	20	6.4	10.0	20
ETP-13.5	ETG-9	30.00	100	18	9.6	13.0	30
ETP-16	ETG-11	42.00	50	18	11.8	15.8	40
ETP-18.5	ETG-13.5	48.00	50	18	14.3	18.5	42
ETP-22	ETG-16	52.00	50	18	15.9	21.2	45
ETP-28	ETG-21	80.00	50	12	21.7	28.5	55
ETP-34	ETG-29	110.00	25	10	27.8	34.5	60
ETP-42	ETG-36	148.00	25	10	36.0	42.5	65
ETP-54	ETG-48	240.00	15	10	48.3	54.5	80



MC 4 CONNECTOR

HSN CODE :85389000

Model No. SY-MC4-1



● Prices are on Request.

SPECIFICATION

- Housing material PPO Material
- Contact material Copper with tin plated
- Suitable for cable cross section : 2.5 mm² -6.0mm²
- Resistance Less than 0.3 m
- Pin dimensions 4 φmm
- Rated Voltage: TUV 1000V DC/UL 600V DC
- Rated Current : 20A -30A

SALIENT FEATURES

- Provides UV protection to the connection
- Snap fit locking arrangement
- Resistance Less than 0.3 m
- TUV Certified
- Ip67 Protection
- Low contact resistance
- Tested as per international standards

POLYAMIDE HANDLE

HSN CODE: 39269099



ETPL-09



ETPL-06



ETPL-07



ETPL-07-1



ETBL-01



ETSL-01

SR.No.	CAT No.	ITEM	PRICE	Std Pkg
1	ETPL-06	Polyamide Handle 120 mm	26.00	500 Nos
2	ETPL-07	Polyamide Small Pocket Handle 94mm	17.00	1000 Nos
3	ETPL-07-1	Polyamide Big Pocket Handle 109mm	27.00	500 Nos
4	ETPL-09	Polyamide Handle 90 mm	8.50	500 Nos
5	ETSL-01	Polyamide Slide Lock (Lever Latch)	11.00	2000 Nos
6	ETBL-01	Polyamide Blanker 22.5mm	5.50	2000 Nos

SELF ADHESIVE GASKET TAPE

HSN CODE: 39199020

PRODUCT SPECIFICATIONS

- Self Life : 1 Years
- Adhesive Side : Single Side
- Peeling Strength : >550gms / 25mm
- Material : EVA FOAM
- Tape Type : Single Side Gasket Type
- Adhesive Type : Pressure Sensitive
- Colour : Black
- Prices are on Request.

PRODUCT SPECIFICATIONS

- Use commonly in sealing Industrial electrical panels, compartments with application even in Bus & Truck body, these Tape most commonly use EVA Foam as the substrate and are coated with an Acrylic Adhesive , Commonly Available in Black Colour .
- Thickness : 3mm, 5mm & 6mm ,
- Widths : 15mm to 100mm.



Distubutors Network



- **Head Office (Mumbai)**
- **Distributors**
- **Dealers**
- ★ **Manufacturing Unit (Daman)**



Approved Certificate

Valuable Customers

Herein, we feel proud to apprise you that presently we are Market Leader in manufacturing Quality Product. Major chunk of our products is used by

- State Electricity Board • Defense • Power Supply Co.
- Railways • Telecom system • Automation • Cement Factories
- Steel Plants • Petrochemical • Power Projects.

Our consistent reputed clientele are

- Power Grid Corporation • ONGC • BHEL • Railways • BEL
- Instrumentation Ltd. • Bharat Bijlee • BCH • Reliance
- HFCL • Siemens • Jain Irrigation sys Ltd
- GE Power • Larsen & Toubro Ltd. • Crompton Greaves Ltd.
- ABB Ltd, Schneider • Amara Raja Power Systems
- Raychem RPG, etc.

We are on approved list of all the major Consultants. Moreover we are exporting our products to various countries in the • Middle East • South East Asia.

Our product conforms to CE, ROHS, ERDA, IP54, IP55, IP65 standards. We serve our Customer with tailor-made item to suit their specific need.



ELETTRO[®]

Built **F**or
The Challenge

Authorised Dealer