



Way Ahead

Analog Expertise

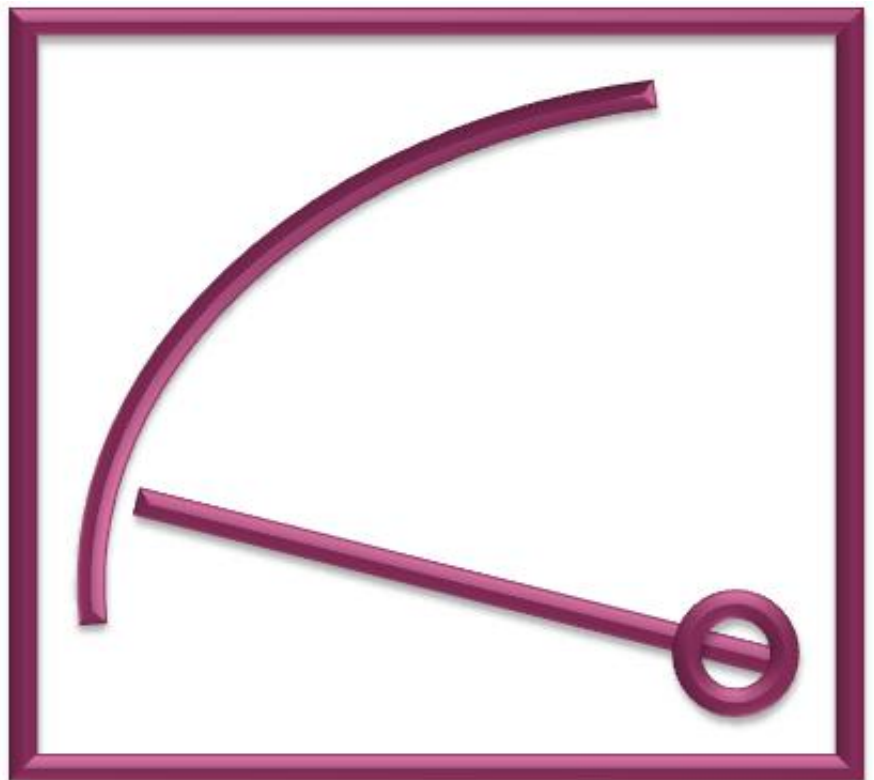


**Rishabh Instruments Pvt. Ltd.**

Price List w.e.f July 2021

# Index

<b>Analog Expertise</b>	<b>Page No.</b>
Analog Panel Meters	01
CAM Switches	06
Current Transformers	11
DC Shunts	44
<b>Terms and conditions</b>	<b>45</b>



# Analog Panel Meters



## 90° Scale

Group	Type	Description	48x48	72x72	96x96	144x144
			mm	mm	mm	mm
			LP (INR)			
<b>Moving Iron AC Meters</b>			<b>EQ41</b>	<b>EQ71</b>	<b>EQ91</b>	<b>EQ11</b>
EQ	Voltmeter	6, 10, 15, 25, 30, 40, 50, 75, 100, 110, 120, 125, 132.5, 133.33, 150, 250, 300V	515	470	540	790
		400, 500, 600, 750V	605	515	595	880
		Non Standard Voltmeter/Non Std PT Operated Voltmeter/Other than above ranges (upto 1000V)	695	605	685	1,025
	Milli -Ammeter	100, 150, 250, 400, 500, 600, 750mA	505	460	505	695
		1, 1.2, 1.25, 1.5, 2.5, 4, 5, 6, 10, 15, 20, 25, CT Operated 5A/1A Secondary	505	450	470	665
		30, 40, 50, 60A	710	540	575	790
Ammeter	100A	-	540	575	790	
	Non Standard Ammeter/Other than above ranges (upto 100A)	755	685	720	1,005	
<b>Moving Iron AC Meters with In-built Selector Switch</b>			<b>SS71</b>	<b>SS91</b>		
SS	Voltmeter / Ammeter	Inbuilt selector switch type Ammeters & Voltmeters (EQ-SWT)	-	730	815	-
<b>Moving Coil DC Meters</b>			<b>PQ41</b>	<b>PQ71</b>	<b>PQ91</b>	<b>PQ11</b>
PQ	Milli -Voltmeter	15**, 25**, 40**, 50 mV	825	715	780	-
		60, 75, 100, 150, 250, 400, 600 & 750mV	795	690	750	1,325
		1, 1.5, 2.5, 4, 5, 6, 10, 15, 20, 25, 30V	795	690	815	1,325
	Voltmeter	40, 50, 60, 100, 150, 200, 250, 300V	905	795	850	1,335
		400, 500, 600V	985	805	930	1,390
		Non Standard Voltmeter/Other than above ranges (upto 1000V)	1,245	1,130	1,210	1,650
Micro-Ammeter	15**, 25**, 40**, 50*, 60*, 75uA	1,020	940	1,040	-	
	100, 150, 200, 250, 400, 500, 600, 750uA	895	815	850	1,335	
Milli -Ammeter	1, 1.5, 2.5, 4, 5, 6, 10, 15, 20, 25, 40, 60, 100, 150, 200, 250, 300, 400, 500, 600, 750mA	760	690	750	1,255	
	1, 1.5, 2.5, 4, 5, 6, 10, 15, 20, 25A	760	690	750	1,255	
	30, 40, 60A	920	795	850	1,515	
	100A	-	930	940	1,620	
	4-20mA	885	825	875	1,450	
Ammeter	Non Standard Ammeter/Other than above ranges (upto 100A)	-	1,100	1,120	1,935	

\*\* Class 5, \* Class 2.5



# Analog Panel Meters



## 90° Scale

Group	Type	Description	48x48	72x72	96x96	144x144
			mm	mm	mm	mm
			LP (INR)			
<b>Moving Coil AC Meters with Rectifier</b>			<b>VQ41</b>	<b>VQ71</b>	<b>VQ91</b>	<b>VQ11</b>
VQ	Voltmeter	6**, 10**, 15**, 20**, 25**, 40**, 50*, 60*, 75, 100, 120, 125, 150, 250, 300, 400, 500, 600V	1,260	1,070	1,215	1,705
		Non Standard Voltmeter/Other than above ranges (upto 600V)	1,465	1,240	1,415	1,865
	Micro-Ammeter	100, 150, 250, 400, 50, 600, 750uA	1,165	1,080	1,120	1,630
	Milli -Ammeter	1, 1.5, 2.5, 4, 5, 6, 10, 15, 20, 25, 30, 40, 60, 75, 100mA	1,025	950	1,015	1,555
		150, 250, 400, 600, 750mA	1,145	1,070	1,130	1,675
	Ammeter	1, 1.5, 2.5, 4, 5A	-	1,190	1,260	1,795
6, 10A		-	-	1,335	1,910	
		Non Standard Ammeter/Other than above ranges (upto 10A)	-	-	1,415	1,975

\*\* Class 5, \* Class 2.5

<b>Pointer type Frequency Meters with Built In Transducer</b>			<b>ZQ41</b>	<b>ZQ71</b>	<b>ZQ91</b>	<b>ZQ11</b>
ZQ	Frequency Meter	45-50-55 Hz, 45-55-65 Hz, 55-60-65 Hz	1,070	1,015	1,100	1,180
		380-400-420 Hz, 360-400-440 Hz	-	980	1,050	1,130

<b>Vibrating Reed type Frequency Meters</b>			<b>FQ71</b>	<b>FQ91</b>	<b>FQ11</b>	
FQ	Frequency Meter	45-50-55 Hz, 47-50-53 Hz	-	950	985	-

<b>Power Factor Meters with Built In Transducer</b>			<b>CQ71</b>	<b>CQ91</b>	<b>CQ11</b>	
CQ	Power Factor Meter	1Ph. (Not Applicable for CQ71) & 3Ph. balanced load		1,650	1,695	1,790
		3Ph., 3W unbalanced load (D2C)		-	3,720	4,185
		3Ph., 4W unbalanced load (V3C)		-	4,545	5,085

Cap 0.8-1-0.3 Ind (Bal load), Cap 0.8-1-0.8 Ind (Bal load), Cap 0.5-1-0.5 Ind (Bal & Unbal Load) for 1 Phase meter PF range will be Cap 0.5-1-0.5 Ind only.

Operating frequency 60Hz - Please contact to nearest sales office.

<b>Active (W) / Reactive (B) Power Meters with Built In Transducer</b>			<b>WQ91</b>	<b>WQ11</b>	
WQ	Active Power Meter (Wattmeter)	Single Element Single Phase (E1W)		1,810	2,025
		Single Element 3 Phase 3 Wire Balanced Load (D1W)		2,160	2,310
		Two Element 3 Phase 3 Wire Unbalanced Load (D2W)		2,875	3,190
		Single Element 3 Phase 4 Wire Balanced Load (V1W)		2,365	2,520
		Three Element 3 Phase 4 Wire Unbalanced Load (V3W)		3,560	3,955
WQ	Re-active Power Meter (VAr Meter)	Single Element Single Phase (E1B)		1,810	2,025
		Single Element 3 Phase 3 Wire Balanced Load (D1B)		2,160	2,310
		Two Element 3 Phase 3 Wire Unbalanced Load (D2B)		2,875	3,190
		Single Element 3 Phase 4 Wire Balanced Load (V1B)		2,365	2,520
		Three Element 3 Phase 4 Wire Unbalanced Load (V3B)		3,560	3,955

Please Specify Measuring Range, Primary & Secondary Voltage & Current While Ordering. Allowable λ factor ranges 0.5 - 1.5

<b>Synchroscope Meters</b>			<b>SQ91</b>	<b>SQ11</b>
SQ	Synchroscope	110/100V, 127/120V, 240/220V, 440/380V, 480/415V ( LED TYPE)	2,570	3,895

<b>Maximum Demand Ammeters - BIQ / BIEQ</b>			<b>BI41</b>	<b>BI71</b>	<b>BE71</b>	<b>BI91</b>	<b>BE91</b>
MDI	Ammeter	.../1A/1.2/5/6A (8 minutes / 15 minutes)	1,820	1,620	2,010	1,535	1,880
		.../1A/1.2/5/6A ( 20 minutes )	-	2,485	2,770	2,770	2,900



# Analog Panel Meters



## 240° Scale

Group	Type	Description	48x48	72x72	96x96	144x144
			mm	mm	mm	mm
			LP (INR)			
<b>Moving Coil DC Meters</b>			<b>PL41</b>	<b>PL71</b>	<b>PL91</b>	<b>PL11</b>
PL	Milli-Voltmeter	50, 60, 75, 100, 150, 250, 400, 600 & 750 mV	-	1,310	1,385	1,625
		1, 1.5, 2.5, 4, 5, 6, 10, 15, 25, 30, 40, 50, 60, 75, 100V	1,420	1,310	1,385	1,625
	Voltmeter	150, 200, 250, 300, 400, 500, 600V	-	1,310	1,385	1,625
		Non Standard Voltmeter/Other than above ranges (upto 600V)	-	1,400	1,490	1,750
	Micro-Ammeter	50*, 60*, 75, 100uA	-	1,385	1,715	1,760
		100, 150, 250, 400, 500, 600uA	-	1,250	1,330	1,690
	Milli-Ammeter	1, 1.5, 2.5, 4, 5, 6, 10, 15, 20, 25, 40, 50, 60, 100, 150, 200, 250, 300, 400, 500, 600, 750 mA	-	1,195	1,275	1,490
		1, 1.5, 2.5, 4, 5, 6, 10, 15, 20, 25A	-	1,195	1,275	1,490
	Ammeter	30, 40, 50, 60A	-	-	1,555	1,625
		4-20mA	1,490	1,355	1,420	1,680
Non Standard Ammeter/Other than above ranges (upto 60A)		-	1,455	1,535	1,780	

\* Class 2.5

<b>Moving Coil AC Meters with Rectifier</b>			<b>VL71</b>	<b>VL91</b>	<b>VL11</b>
VL	Voltmeter	6**, 10**, 20**, 25**, 40**, 50*, 60*, 100, 110, 120, 125, 132.5, 133.33, 150, 200, 250, 300, 400, 500, 600V	1,520	1,615	1,850
		Non Standard Voltmeter/Other than above ranges (upto 600V)	1,625	1,705	1,975
	Ammeter	1A & 5A CT operated	1,645	1,725	1,965

\*\* Class 5, \* Class 2.5

<b>Frequency Meters with Built In Transducer</b>			<b>ZL91</b>	<b>ZL11</b>
ZL	Frequency Meter	45-50-55 Hz, 45-55-65 Hz, 55-60-65 Hz	1,965	2,155
		380-400-420 Hz, 360-400-440 Hz	2,065	2,255

<b>Power Factor Meters with Built In Transducer</b>			<b>CL91</b>	<b>CL11</b>
CL	Power Factor Meter	1Ph. & 3Ph. balanced load	3,125	3,985
		3Ph., 3W unbalanced load (D2C)	5,680	6,540
		3Ph., 4W unbalanced load (V3C)	6,200	7,050

Cap 0.8-1-0.3 Ind (Balanced load), Cap 0.8-1-0.8 Ind (Balanced load), Cap 0.5-1-0.5 Ind (Balanced & Unbalanced Load).

For 1 Phase meter PF range will be Cap 0.5-1-0.5 Ind and for CL91 / CL11 - Class 1.5 applicable only.

Operating frequency 60Hz - Please contact to nearest sales office.

<b>Active (W) / Reactive (B) Power Meters with Built-in Transducer</b>			<b>WL91</b>	<b>WL11</b>
WL	Active Power Meter (Wattmeter)	Single Element Single Phase (E1W)	3,750	3,920
		Single Element 3 Phase 3 Wire Balanced Load (D1W)	3,590	3,750
		Two Element 3 Phase 3 Wire Unbalanced Load (D2W)	5,295	5,465
		Single Element 3 Phase 4 Wire Balanced Load (V1W)	3,750	3,920
		Three Element 3 Phase 4 Wire Unbalanced Load (V3W)	4,845	4,990
WL	Re-active Power Meter (VAr Meter)	Single Element Single Phase (E1B)	3,750	3,920
		Single Element 3 Phase 3 Wire Balanced Load (D1B)	3,590	3,750
		Two Element 3 Phase 3 Wire Unbalanced Load (D2B)	5,295	5,465
		Single Element 3 Phase 4 Wire Balanced Load (V1B)	3,750	3,920
		Three Element 3 Phase 4 Wire Unbalanced Load (V3B)	4,845	4,990

Please Specify Measuring Range, Primary & Secondary Voltage & Current While Ordering. Allowable λ factor ranges 0.5 - 1.5



# Analog Panel Meters

Extra Charges Applicable for 90 deg / 240 deg deflection meters	LP (INR)
Standard Scale [e.g. 300/5A (If separate scale is required)]	30
Non-Standard Scale [e.g. RPM, m/min., %, BAR etc. (If separate scale is required)]	55
Customised Scale [Like rpm, m/min., %, BAR etc. This is a surcharge for non standard scale along with the meter price = LP + surcharge	40
Ammeter (x1) (without suppression)	-
Ammeter (x2) or (x3) suppression (for EQ meters only)	-
Ammeter (x5) or (x6) suppression (for EQ meters only)	30
Ammeter (x2) or (x6) suppression (for VQ & VL meters only)	40
Dual Range with three terminals (for EQ 96 and EQ 144 sizes only)	80
Centre Zero (for PQ, PL, WQ & WL meters only)	30
Zero between left & centre (for PQ, PL, WQ & WL meters only)	35
Zero suppression (1.....5V DC) for PQ or PL meters	40
Additional numbering / marking / red mark	35
Coloured Sectors (red/green) per sector	35
Black scale & yellow / white pointer marking & number	65
Customised frequency EQ (40Hz.....400Hz)	40
Calibration at position other than perpendicular	35
Accuracy Class 1	35
Dual scale with two terminals	40
Triple scale with two terminals	55
Red Pointer Assembly 72x72 or 96x96	65
Spares	LP (INR)
Glass ( 48,72,96,144 mm)	25
Glass with zero adjustment ( 48,72,96,144mm)	30
Anti glare Glass ( 48,72,96,144mm)	65
MDI Glass with Zero Adjustment Knob	60
Colour Bezel (White, Blue, Red, Yellow)	45
Clamp-strap with screw (set of 2)	25
Swivel fixing clamp (set of 2)	25
Spring clips (only for 48, set of 2)	45
Bezel / black frame	35
Full Back Cover as per IP-20	45
Rubber Gasket 72 Size	50
Rubber Gasket 96 Size	55
IP 65 protection kit ( 72 / 96 size)	100
24V DC Illumination kit	170



# Analog Panel Meters



## ANSI Standard Meters

### Challenger Series

		Model	361	362	363	364
		Length x Height (mm)	45.7 x 57.4	76.2 x 58.5	95.3 x 73.9	131.7 x 103
		Round Cut out (mm)	40	54	54	70
Moving Iron AC Meters			EQ1C	EQ2C	EQ3C	EQ4C
EQ	Ammeters	Ammeters - Upto 30A	515	455	515	705
		Ammeters - 40 to 60A	605	550	575	820
	Voltsmeters	Voltsmeters - Upto 300V	540	475	550	775
		Voltsmeters - 400 to 600V	585	550	575	835
Moving Coil DC Meters			PQ1C	PQ2C	PQ3C	PQ4C
PQ	Ammeters	Ammeters - 100 to 500uA	835	835	980	1,275
		Ammeter s- 1mA to 30A	715	660	705	1,190
		Ammeter s- 40 to 60A	-	715	765	1,320
	Voltsmeters	Voltsmeter s- Upto 30V	715	660	705	1,190
		Voltsmeter s- 40 to 300V	810	745	800	1,215
		Voltsmeter s- 400 to 600V	895	800	885	1,275
Frequency Meters			ZQ1C	ZQ2C	ZQ3C	ZQ4C
ZQ	Frequency Meter 45-55Hz, 45-65Hz, 55-65Hz - 110V/240V/415V		-	965	1,025	-

### Anush Series

		Model	11	12
		L x H - In mm	55.6 x 47.2	79.2 x 67.5
		Round Cutout (mm)	39	56
Moving Iron AC Meters			EQ1A	EQ2A
EQ	Ammeters	Ammeters - Upto 30A	-	455
		Ammeters - 40 to 60A	-	530
	Voltsmeters	Voltsmeters - Upto 300V	-	515
		Voltsmeters - 400 to 600V	-	530
Moving Coil DC Meters			PQ1A	PQ2A
PQ	Ammeters	Ammeter - 100 to 500uA	820	-
		Ammeter - 1mA to 30A	645	-
		Ammeter - 40 to 60A	715	-
	Voltsmeters	Voltsmeter - Upto 30V	645	-
		Voltsmeter - 40 to 300V	725	-
		Voltsmeter - 400 to 600V	790	-

### Two In One Meters

Model	Type	Description	96x96 mm	144x144 mm
<b>Moving Iron AC meters</b>			<b>EQ9T</b>	<b>EQ1T</b>
EQ 2 in1		AC Moving Iron Low rating (<30A) Ammeter - Voltmeter combination Meters	845	1,335
		AC Moving Iron High rating (30A & above) Ammeter - Voltmeter combination Meters	990	1,475
		AC Moving Iron Voltmeter - Voltmeter combination Meters	895	1,405
		AC Moving Iron Low rating (<30A) Ammeter - Low rating Ammeter (<30A) combination Meters	845	1,335
		AC Moving Iron High rating (30A & above) Ammeter - Low rating (<30A) Ammeter combination Meters	990	1,475
		<b>Frequency Meters</b>		
2 in1	ZQ 2 in1	Frequency - Frequency combination meters	1,500	1,985
<b>Moving Coil DC meters</b>			<b>PQ9T</b>	<b>PQ1T</b>
PQ 2 in1		DC Moving Coil Low rating (<30A) Ammeter - Voltmeter combination Meters	1,335	1,820
		DC Moving Coil High rating (30A & above) Ammeter - Voltmeter combination Meters	1,490	1,950
		DC Moving Coil Voltmeter - Voltmeter combination Meters	1,275	1,770
		DC Moving Coil Low rating (<30A) Ammeter - Low rating (<30A) Ammeter combination Meters	1,335	1,820
		DC Moving Coil High rating (30A & above) Ammeter - Low rating (<30A) Ammeter combination Meters	1,490	1,950

### Run - Hour Meters

Model	Type	Description	72x72 mm	96x96 mm
<b>Rish Elapsed Time Meters (Hour meters)</b>			<b>ET71</b>	<b>ET91</b>
ETM	Hour meters	Voltage AC Input : 100-125 / 200-250 / 380-440V 50Hz & 60Hz	1,900	2,140



## Breaker Control (TNC) Switches

Description	LP (INR)	
	TSR	
	25 A	32 A
TNC 1NO 1NC 60D	820	985
TNC 2NO 2NC 60D	995	1,185

## Spring Return Switches

Description	LP (INR)	
	CSR	
	16 A	25 A
ON OFF SPRING RETURN 90D 1P OFF	485	740
ON OFF SPRING RETURN 90D 2P OFF	510	835
ON OFF SPRING RETURN 90D 3P OFF	580	1,000
ON OFF SPRING RETURN 90D 4P OFF	680	1,090

Description	LP (INR)	
	CSR	
	16 A	25 A
DOUBLE THROW SPRING RETURN 60D 1P 2W OFF	510	835
DOUBLE THROW SPRING RETURN 60D 2P 2W OFF	745	1,090
DOUBLE THROW SPRING RETURN 60D 3P 2W OFF	815	1,355

Description	LP (INR)	
	CSR	
	16 A	25 A
SPRING RETURN 60D 1P 2W W/OFF	465	835
SPRING RETURN 60D 2P 2W W/OFF	680	1,090
SPRING RETURN 60D 3P 2W W/OFF	740	1,355



## Reverse Forward Switches

Order code	Description	LP (INR)
CRF1-D45L2XXOFS000	RF 45D 2POLE 25A	525
CRF1-D60L2XXOFS000	RF 60D 2POLE 25A	525
CRF1-E45L2XXOFS000	RF 45D 2POLE 32A	620
CRF1-E60L2XXOFS000	RF 60D 2POLE 32A	620
CRF1-F45L2XXOFS000	RF 45D 2POLE 40A	1,600
CRF1-F60L2XXOFS000	RF 60D 2POLE 40A	1,600
CRF1-G45L2XXOFS000	RF 45D 2POLE 63A	1,940
CRF1-G60L2XXOFS000	RF 60D 2POLE 63A	1,940
CRF1-D45L3XXOFS000	RF 45D 3POLE 25A	690
CRF1-D60L3XXOFS000	RF 60D 3POLE 25A	690
CRF1-E45L3XXOFS000	RF 45D 3POLE 32A	790
CRF1-E60L3XXOFS000	RF 60D 3POLE 32A	790
CRF1-F45L3XXOFS000	RF 45D 3POLE 40A	1,800
CRF1-F60L3XXOFS000	RF 60D 3POLE 40A	1,800
CRF1-G45L3XXOFS000	RF 45D 3POLE 63A	2,140
CRF1-G60L3XXOFS000	RF 60D 3POLE 63A	2,140





## Instrumentation Switches

Description	LP (INR)			
	CST4			
	6A (PS/MS)	10A	16A	20A
Ammeter Selector Switch - Line Currents with OFF, 4 Pos.	220	265	325	365
Ammeter Selector Switch - Line Currents with Neutral with OFF, 5 Pos.	225	270	330	375
Voltmeter Selector Switch -Voltage between phases with OFF, 4 Pos.	160	245	295	345
Voltmeter Selector Switch - Voltage between phases and individual phases to neutral with OFF, 7 Pos.	290	480	555	595
Voltmeter Selector Switch - Voltage between phases to neutral with OFF, 4 Pos.	280	325	405	440

Note :PS - Plastic Shaft Switch with IP20 / MS - Metal Shaft Switch



## Changeover Switches

RISHCAM - COFF 60 / COFF 90 / CWOFF 90	Description	LP (INR)									
		CST1				CSS1				CSH1	
		6A (PS/MS)	10A	16A	20A	25A	32A	40A	63A	100A	200A
With OFF 60 Deg / 90 Deg / 90 Deg without OFF	1P 2W	140	255	295	300	315	355	470	625	3,120	4,485
	2P 2W	180	300	330	390	425	490	635	945	4,540	6,810
	3P 2W	220	370	440	545	630	680	800	1,260	5,865	8,700
	4P 2W	270	430	510	670	830	880	965	1,595	7,470	10,955

RISHCAM - PCF90	Description	LP (INR)									
		CST1				CSS1				CSH1	
		6A (PS/MS)	10A	16A	20A	25A	32A	40A	63A	100A	200A
Phase Changeover With OFF 90 Deg	1P 3W	160	215	255	295	300	390	570	610	2,560	3,640
	2P 3W	205	255	325	405	490	560	645	840	3,745	5,230
	3P 3W	245	300	345	465	590	615	955	1,300	3,990	5,570
DB Phase Changeover With OFF 90 Deg	3P 1W	-	-	-	-	-	-	-	760	-	-

## Isolator Switches

RISHCAM - I60 / 90 / 90 CR	Description	LP (INR)									
		CST3				CSS3				CSH3	
		6A (PS/MS)	10A	16A	20A	25A	32A	40A	63A	100A	200A
Isolator 60 / 90 / 90 Deg CR	1P ON-OFF	105	200	235	245	260	315	390	460	2,345	2,995
	2P ON-OFF	140	225	265	285	310	360	465	590	2,880	3,850
	3P ON-OFF	150	295	325	365	420	455	550	770	3,530	4,835
	4P ON-OFF	180	305	345	415	495	525	635	945	4,245	5,860

RISHCAM - I45	Description	LP (INR)									
		CST3				CSS3				CSH3	
		6A (PS/MS)	10A	16A	20A	25A	32A	40A	63A	100A	200A
Isolator 45 Deg	1P ON-OFF	120	165	225	240	250	350	425	505	-	-
	2P ON-OFF	160	205	265	300	340	390	520	645	-	-
	3P ON-OFF	190	245	290	380	440	520	605	880	-	-

## Multistep Switches

RISHCAM - MOFF (3 WAY)	Description	LP (INR)									
		CST2				CSS2				CSH2	
		6A (PS/MS)	10A	16A	20A	25A	32A	40A	63A	100A	200A
With OFF 90 Deg	1P 3W	160	290	305	315	305	380	540	600	3,120	4,710
	2P 3W	225	335	370	440	500	535	760	850	4,515	7,095
	3P 3W	310	440	625	670	735	805	1,005	1,285	5,895	9,245
	4P 3W	395	560	750	820	905	1,005	1,320	1,545	7,395	11,645

RISHCAM - MOFF (4 WAY)	Description	LP (INR)									
		CST2				CSS2				CSH2	
		6A (PS/MS)	10A	16A	20A	25A	32A	40A	63A	100A	200A
With OFF 60 Deg	1P 4W	185	260	440	485	530	585	665	875	2,780	3,975
	2P 4W	310	475	525	540	560	640	820	1,025	3,975	6,180
	3P 4W	435	435	810	860	905	1,050	1,390	1,555	10,745	13,860

RISHCAM - MOFF (5 WAY)	Description	LP (INR)									
		CST2				CSS2				CSH2	
		6A (PS/MS)	10A	16A	20A	25A	32A	40A	63A	100A	200A
With OFF 60 Deg	1P 5W	200	405	510	570	655	670	810	940	2,815	4,045
	2P 5W	365	620	675	770	875	1,025	1,060	1,310	4,035	6,230

PS - Plastic Shaft Switch with IP20 / MS - Metal Shaft Switch

# CAM Switches



## Multistep Switches

RISHCAM - MOFF (6 WAY)	Description	LP (INR)									
		CST2				CSS2				CSH2	
		6A (PS/MS)	10A	16A	20A	25A	32A	40A	63A	100A	200A
With OFF 45 Deg	1P 6W	265	270	495	545	590	675	700	1,110	-	-
	2P 6W	435	425	715	800	905	1,100	1,400	1,785	-	-

RISHCAM - MOFF (7 WAY)	Description	LP (INR)									
		CST2				CSS2				CSH2	
		6A (PS/MS)	10A	16A	20A	25A	32A	40A	63A	100A	200A
With OFF 45 Deg	1P 7W	275	445	530	585	670	695	720	1,100	-	-

RISHCAM - MOFF (8 WAY)	Description	LP (INR)									
		CST2				CSS2				CSH2	
		6A (PS/MS)	10A	16A	20A	25A	32A	40A	63A	100A	200A
With OFF 30 Deg	1P 8W	300	370	525	610	-	-	-	-	-	-

RISHCAM - MOFF (9 WAY)	Description	LP (INR)									
		CST2				CSS2				CSH2	
		6A (PS/MS)	10A	16A	20A	25A	32A	40A	63A	100A	200A
With OFF 30 Deg	1P 9W	310	445	525	650	-	-	-	-	-	-

RISHCAM - MOFF (10 WAY)	Description	LP (INR)									
		CST2				CSS2				CSH2	
		6A (PS/MS)	10A	16A	20A	25A	32A	40A	63A	100A	200A
With OFF 30 Deg	1P 10W	355	460	710	945	-	-	-	-	-	-

RISHCAM - MOFF (11 WAY)	Description	LP (INR)									
		CST2				CSS2				CSH2	
		6A (PS/MS)	10A	16A	20A	25A	32A	40A	63A	100A	200A
With OFF 30 Deg	1P 11W	430	505	655	805	-	-	-	-	-	-

RISHCAM - MWOFF (3 WAY)	Description	LP (INR)									
		CST2				CSS2				CSH2	
		6A (PS/MS)	10A	16A	20A	25A	32A	40A	63A	100A	200A
Without OFF 60 Deg	1P 3W	150	275	310	315	390	405	615	690	2,585	4,115
	2P 3W	225	405	435	570	710	695	770	905	4,535	5,815
	3P 3W	310	505	645	685	740	795	1,110	1,305	4,895	9,385
	4P 3W	395	560	740	840	925	975	2,120	2,370	5,245	10,245

RISHCAM - MWOFF (4 WAY)	Description	LP (INR)									
		CST2				CSS2				CSH2	
		6A (PS/MS)	10A	16A	20A	25A	32A	40A	63A	100A	200A
Without OFF 90 Deg	1P 4W	170	295	380	415	470	485	660	930	3,120	3,300
	2P 4W	245	435	445	510	550	600	805	1,020	4,695	7,755
	3P 4W	335	500	700	780	860	945	1,030	1,370	6,245	10,245

RISHCAM - MWOFF (5 WAY)	Description	LP (INR)									
		CST2				CSS2				CSH2	
		6A (PS/MS)	10A	16A	20A	25A	32A	40A	63A	100A	200A
Without OFF 60 Deg	1P 5W	195	310	405	465	510	650	820	1,030	2,780	3,995
	2P 5W	365	350	550	705	820	890	1,130	1,420	4,020	9,630

PS - Plastic Shaft Switch with IP20 / MS - Metal Shaft Switch

# CAM Switches



## Multistep Switches

RISHCAM - MWOFF (6 WAY)	Description	LP (INR)									
		CST2				CSS2				CSH2	
		6A (PS/MS)	10A	16A	20A	25A	32A	40A	63A	100A	200A
Without OFF 60 Deg	1P 6W	215	265	510	540	580	670	770	970	4,515	8,695
	2P 6W	420	505	680	845	1,020	1,040	1,055	1,345	8,895	11,430

RISHCAM - MWOFF (7 WAY)	Description	LP (INR)									
		CST2				CSS2				CSH2	
		6A (PS/MS)	10A	16A	20A	25A	32A	40A	63A	100A	200A
Without OFF 45 Deg	1P 7W	265	335	385	530	685	690	820	1,210	-	-

RISHCAM - MWOFF (8 WAY)	Description	LP (INR)									
		CST2				CSS2				CSH2	
		6A (PS/MS)	10A	16A	20A	25A	32A	40A	63A	100A	200A
Without OFF 45 Deg	1P 8W	270	545	575	610	695	720	810	1,160	-	-

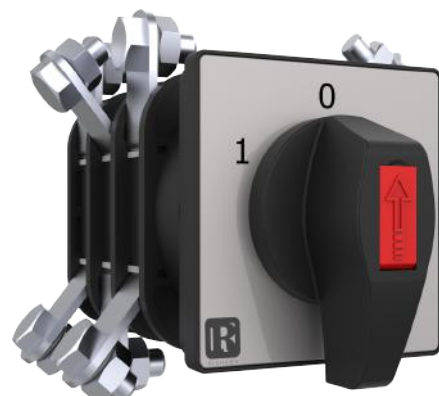
RISHCAM - MWOFF (9 WAY)	Description	LP (INR)									
		CST2				CSS2				CSH2	
		6A (PS/MS)	10A	16A	20A	25A	32A	40A	63A	100A	200A
Without OFF 30 Deg	1P 9W	310	440	900	975	-	-	-	-	-	-

RISHCAM - MWOFF (10 WAY)	Description	LP (INR)									
		CST2				CSS2				CSH2	
		6A (PS/MS)	10A	16A	20A	25A	32A	40A	63A	100A	200A
Without OFF 30 Deg	1P 10W	335	585	995	1,080	-	-	-	-	-	-

RISHCAM - MWOFF (11 WAY)	Description	LP (INR)									
		CST2				CSS2				CSH2	
		6A (PS/MS)	10A	16A	20A	25A	32A	40A	63A	100A	200A
Without OFF 30 Deg	1P 11W	580	610	1,050	1,140	-	-	-	-	-	-

RISHCAM - MWOFF (12 WAY)	Description	LP (INR)									
		CST2				CSS2				CSH2	
		6A (PS/MS)	10A	16A	20A	25A	32A	40A	63A	100A	200A
Without OFF 30 Deg	1P 12W	650	690	1,100	1,210	-	-	-	-	-	-

PS - Plastic Shaft Switch with IP20 / MS - Metal Shaft Switch



# Metering Current Transformers

## 3 in 1 CT with RJ12 connection

Secondary Current : 100mA

KMAT	Description	Primary Current (A)	Class 1	
			VA	LP (INR)
XRJ1	CTB 3PH RJ12 75mm wide	60	0.25	1,010
	CTB 3PH RJ12 75mm wide	100	0.25	1,065
	CTB 3PH RJ12 75mm wide	125	0.25	1,075
	CTB 3PH RJ12 75mm wide	160	0.25	1,085
XRJ2	CTB 3PH RJ12 105mm wide	60	0.25	1,085
	CTB 3PH RJ12 105mm wide	100	0.25	1,110
	CTB 3PH RJ12 105mm wide	125	0.35	1,115
	CTB 3PH RJ12 105mm wide	160	0.5	1,120
XRJ3	CTB 3PH RJ12 105mm wide	250	0.5	1,155
	CTB 3PH RJ12 140mm wide	250	0.25	1,175
	CTB 3PH RJ12 140mm wide	400	0.25	1,200
XRJ4	CTB 3PH RJ12 140mm wide	630	0.25	1,245
	CTB 3PH RJ12 215mm wide	750	0.5	1,270
	CTB 3PH RJ12 215mm wide	800	0.5	1,290

Note :- Above CTs will be supplied with detachable cable length of 2 meters

## 3 Phase Nano CT

Secondary Current : 100mA

Description	Primary Current (A)	Class 0.5	
		VA	LP (INR)
X308 - CTB 3PH 65/8	63	0.1	740
X306 - CTB 3PH 90/15	125	0.1	780
X307 - CTB 3PH 116/26	250	0.1	895

## 3 Phase Nano CT with RJ12 connection

Secondary Current : 100mA

Description	Primary Current (A)	Class 0.5	
		VA	LP (INR)
X308 - CTB 3PH RJ12 65/8	63	0.1	850
X306 - CTB 3PH RJ12 90/15	125	0.1	890
X307 - CTB 3PH RJ12 116/26	250	0.1	1,010

Note :- Above CTs will be supplied with integrated cable length of 2 meters



Rishabh Instruments Pvt. Ltd.

# Metering Current Transformers



## 3 Phase CTs

Standard Secondary current: 5A

Group	Primary Current (A)	Class 0.5		Class 1		Class 3	
		VA	LP (INR)	VA	LP (INR)	VA	LP (INR)
<b>Rish Xmer 3 PH 75/15(60)</b>							
X301	100	-	-	1	1,235	2.5	1,115
	125	-	-	1.5	1,235	2.5	1,160
	150	1.5	1,235	1.5	1,235	2.5	1,220
	160	1.5	1,255	1.5	1,245	2.5	1,235
<b>Rish Xmer 3 PH 105/21(40)</b>							
X302	100	-	-	1	865	2	855
	125	-	-	1.5	885	2.5	880
	150	-	-	1.5	895	2.5	885
	160	1.5	920	1.5	910	2.5	895
	200	1.5	965	1.5	950	2.5	945
	250	1.5	1,015	1.5	1,005	2.5	995
<b>Rish Xmer 3 PH 140/31(40)</b>							
X303	250	1.5	1,005	1.5	995	2.5	990
	300	2.5	1,030	2.5	1,025	3.75	1,010
	400	2.5	1,025	2.5	1,025	3.75	1,015
	500	2.5	1,075	2.5	1,065	3.75	1,055
<b>Rish Xmer 3 PH 185/27(45)</b>							
X304	40	-	-	-	-	1.25	925
	60	-	-	-	-	1.5	950
	80	-	-	-	-	1.5	960
	100	-	-	1.5	990	1.5	975
	150	-	-	1.5	1,040	1.5	1,025
	200	-	-	2.5	1,110	2.5	1,095
	250	-	-	2.5	1,200	2.5	1,180
	300	-	-	5	1,255	5	1,240
	400	-	-	5	1,295	5	1,280
	500	-	-	5	1,355	5	1,300
<b>Rish Xmer 3 PH 185/37(45)</b>							
X305	300	-	-	2.5	845	2.5	835
	400	-	-	5	915	5	895
	500	-	-	5	1,040	5	1,015
	600	-	-	5	1,065	5	1,050
	800	-	-	5	1,095	5	1,095

Notes :

1. Please add INR 290 for 1A secondary current (Before ordering, please check feasibility with local sales office)
2. Please add INR 90 for Busbar Mounting Kit
3. Please add INR 70 for DIN rail Mounting Kit
4. For any non-standard item, please contact local sales office

**Rishabh Instruments Pvt. Ltd.**

**\$ For productwise approbations, please contact local sales office**

# Metering Current Transformers



## Split Core CT

Standard Secondary current: 5A

Group	Primary Current (A)	Class 0.5		Class 1		Class 3	
		VA	LP (INR)	VA	LP (INR)	VA	LP (INR)
<b>Rish Xmer 93/30SC (40)</b>							
XS01	100	-	-	1.5	1,540	3.5	1,540
	150	-	-	1.75	1,540	3.75	1,540
	200	-	-	2.5	1,540	5	1,540
	250	-	-	3.75	1,860	6.25	1,860
	300	2.5	1,885	5	1,860	6.25	1,860
	400	3.75	1,885	6.25	1,860	10	1,860
<b>Rish Xmer 105/50SC (50)</b>							
XS05	100	-	-	1.5	3,365	-	-
	125	-	-	1.5	3,400	-	-
	150	-	-	1.75	3,430	-	-
	200	1.5	3,475	3.75	3,475	-	-
	250	2.5	3,535	5	3,535	-	-
	300	2.5	3,595	5	3,595	-	-
	400	5	3,700	7.5	3,700	-	-
	500	5	3,805	7.5	3,805	-	-
	600	6.25	3,915	10	3,915	-	-
	750	7.5	4,080	12.5	4,080	-	-
800	7.5	4,140	12.5	4,140	-	-	
<b>Rish Xmer 125/50SC (40)</b>							
XS02	250	1	2,115	2.5	2,115	-	-
	300	2.5	2,115	3.75	2,115	-	-
	400	2.5	2,115	3.75	2,115	-	-
	500	3.75	2,115	5	2,115	-	-
	600	5	2,225	7.5	2,225	-	-
	750	7.5	2,225	10	2,225	-	-
	800	7.5	2,225	10	2,225	-	-
	1000	10	2,225	15	2,225	-	-
	1200	10	2,500	15	2,500	-	-
	1250	10	2,500	15	2,500	-	-
	1500	10	2,785	15	2,785	-	-
	1600	10	2,785	15	2,785	-	-
	2000	10	3,060	15	3,060	-	-



# Metering Current Transformers



## Split Core CT

Standard Secondary current: 5A

Group	Primary Current (A)	Class 0.5		Class 1		Class 3	
		VA	LP (INR)	VA	LP (INR)	VA	LP (INR)
<b>Rish Xmer 155/80SC (40)</b>							
XS03	250	1	3,445	2.5	3,445	-	-
	300	1.5	3,445	3.75	3,445	-	-
	400	2.5	3,445	3.75	3,445	-	-
	500	3.75	3,445	5	3,445	-	-
	600	5	3,445	7.5	3,445	-	-
	750	7.5	3,445	10	3,445	-	-
	800	7.5	3,605	10	3,605	-	-
	1000	10	3,605	15	3,605	-	-
	1200	15	3,605	30	3,605	-	-
	1250	15	3,605	30	3,605	-	-
	1500	20	3,605	45	3,605	-	-
	1600	20	3,605	45	3,605	-	-
	2000	20	4,690	45	4,690	-	-
	2500	25	4,690	45	4,690	-	-
	3000	30	4,690	45	4,690	-	-
<b>Rish Xmer 195/80SC (64)</b>							
XS04	500	1.25	4,885	5	4,885	-	-
	600	1.25	4,885	5	4,885	-	-
	750	5	4,885	10	4,885	-	-
	800	7.5	5,110	10	5,110	-	-
	1000	10	5,110	20	5,110	-	-
	1200	15	5,270	20	5,270	-	-
	1250	15	5,270	20	5,270	-	-
	1500	20	5,550	30	5,550	-	-
	1600	20	5,550	30	5,550	-	-
	2000	25	5,820	30	5,820	-	-
	2500	25	5,820	30	5,820	-	-
	3000	30	5,820	45	5,820	-	-
	4000	30	6,105	45	6,105	-	-
	5000	30	6,105	45	6,105	-	-

Notes :

1. Please add INR 120 for 1A secondary current (Before ordering, please check feasibility with local sales office)
2. For any non-standard item, please contact local sales office

# Metering Current Transformers



## Compact Split Core CT

Group	Primary Current / Secondary Current	Class 1		Class 3	
		VA	LP (INR)	VA	LP (INR)
<b>Compact Split Core CT 36-18</b>					
XCS1	60/1A	-	-	0.2	1,515
	75/1A	-	-	0.2	1,525
	80/1A	-	-	0.2	1,530
	100/1A	-	-	0.2	1,535
<b>Compact Split Core CT 50-18</b>					
XCS2	100/1A	-	-	0.2	2,110
	125/1A	-	-	0.2	2,110
	150/1A	0.2	2,125	-	-
	150/5A	0.2	2,125	-	-
	200/1A	0.2	2,135	-	-
	200/5A	0.2	2,135	-	-
	250/1A	1	2,145	-	-
	250/5A	1	2,145	-	-
<b>Compact Split Core CT 50-32</b>					
XCS3	200/1A	-	-	0.2	2,135
	250/1A	0.2	2,145	-	-
	250/5A	0.2	2,145	-	-
	300/1A	0.2	2,155	-	-
	300/5A	0.2	2,155	-	-
	400/1A	0.2	2,170	-	-
	400/5A	0.2	2,170	-	-
	500/1A	0.2	2,180	-	-
	500/5A	0.2	2,180	-	-



# Metering Current Transformers

## Resin Cast CT

Standard Secondary current : 5A

Group	Primary Current (A)	Type OD/ID (Axial)	Class 0.5		Class 1.0	
			VA	LP (INR)	VA	LP (INR)
<b>LTRC-1 80/30(50)</b>						
	60	80/30(50)	-	-	1.5	765
XRC1	100	80/30(50)	2.5	845	5	765
	125	80/30(50)	2.5	875	5	795
	150	80/30(50)	3.75	890	5	805
	160	80/30(50)	3.75	895	5	810
<b>LTRC-2 90/50(40)</b>						
	200	90/50(40)	3.75	715	7.5	645
XRC2	250	90/50(40)	3.75	810	10	740
	300	90/50(40)	5	810	10	740
	320	90/50(40)	5	810	10	740
<b>LTRC-3 110/72(40)</b>						
	400	110/72(40)	5	845	10	765
XRC3	500	110/72(40)	7.5	880	15	800
	600	110/72(40)	15	910	15	825
	630	110/72(40)	15	915	15	830
<b>LTRC-4 135/85(40)</b>						
	800	135/85(40)	15	965	15	875
XRC4	1,000	135/85(40)	15	1,030	15	930
	1,200	135/85(40)	15	1,085	15	985
<b>LTRC-5 165/115(40)</b>						
	1,500	165/115(40)	15	1,295	15	1,175
XRC5	1,600	165/115(40)	15	1,380	15	1,255
	2,000	165/115(40)	15	1,535	15	1,395
<b>LTRC-6 195/130(40)</b>						
	2,500	195/130(40)	15	2,035	15	1,850
XRC6	3,000	195/130(40)	15	2,185	15	1,985
	3,200	195/130(40)	15	2,625	15	2,385
<b>LTRC-7 230/165(40)</b>						
	3,000	230/165(40)	15	2,740	15	2,490
XRC7	3,200	230/165(40)	15	2,850	15	2,590
<b>LTRC-8 295/200(40)</b>						
	4,000	295/200(40)	15	3,785	15	3,440
XRC8	5,000	295/200(40)	15	4,830	15	4,390
<b>LTRC-9 Wound Primary CT 83/W(45)</b>						
	10	83/W(45)	5	890	5	855
	15	83/W(45)	5	890	5	855
	20	83/W(45)	5	890	5	855
XRC9	25	83/W(45)	5	890	5	855
	30	83/W(45)	5	890	5	855
	40	83/W(45)	5	890	5	855
	50	83/W(45)	5	890	5	855

Note :

1. Please add INR 120 for 1A secondary current (Before ordering, please check feasibility with local sales office)
2. For any non-standard item, please contact local sales office

# Protection Current Transformers



## Resin Cast CT - Protection Class

Group	Primary Current (A)	Type OD/ID (Axial)	5A Secondary			1A Secondary		
			VA	Class	LP (INR)	VA	Class	LP (INR)
<b>LTRC-1 80/30(50)</b>								
XRC1	100	80/30(50)	1.5	5P5	1,220	1.5	5P5	1,335
	125	80/30(50)	1.5	5P5	1,220	1.5	5P5	1,340
	150	80/30(50)	1	5P10	1,310	1	5P10	1,440
	160	80/30(50)	1	5P10	1,310	1.25	5P10	1,440
<b>LTRC-2 90/50(40)</b>								
XRC2	200	90/50(40)	1.25	5P5	1,690	1.5	5P5	1,860
	250	90/50(40)	1.5	5P5	1,690	2.5	5P5	1,860
	300	90/50(40)	1.5	5P5	1,700	1	5P10	1,870
	320	90/50(40)	1.5	5P5	1,710	1	5P10	1,880
<b>LTRC-3 110/72(40)</b>								
XRC3	400	110/72(40)	1	5P5	1,720	1	5P5	1,890
	500	110/72(40)	1	5P5	1,725	1.50	5P5	1,895
	600	110/72(40)	1.5	5P5	1,730	1.75	5P5	1,900
	630	110/72(40)	1.5	5P5	1,735	1.75	5P5	1,905
<b>LTRC-4 135/85(40)</b>								
XRC4	800	135/85(40)	2.5	5P5	2,035	1.75	5P10	2,245
	1000	135/85(40)	3.75	5P5	2,035	1.75	5P10	2,245
	1200	135/85(40)	5	5P5	2,085	2.5	5P10	2,295
	1250	135/85(40)	5	5P5	2,125	2.5	5P10	2,335
<b>LTRC-5 165/115(40)</b>								
XRC5	1250	165/115(40)	2.5	5P5	2,960	1.75	5P10	3,255
	1500	165/115(40)	3.75	5P5	2,960	2.5	5P10	3,255
	1600	165/115(40)	5	5P5	2,960	2.5	5P10	3,255
	2000	165/115(40)	6.25	5P5	2,995	2.5	5P10	3,295
<b>LTRC-6 195/130(40)</b>								
XRC6	2500	195/130(40)	3.75	5P10	4,040	5	5P10	4,435
	3000	195/130(40)	3.75	5P10	4,040	6.25	5P10	4,435
	3200	195/130(40)	3.75	5P10	4,040	7.5	5P10	4,435
<b>LTRC-7 230/165(40)</b>								
XRC7	3000	230/165(40)	3.75	5P10	4,420	5	5P10	4,860
	3200	230/165(40)	3.75	5P10	4,420	5	5P10	4,860
<b>LTRC-8 295/200(40)</b>								
XRC8	4000	295/200(40)	10	5P10	5,880	15	5P10	6,465
	5000	295/200(40)	10	5P10	6,685	20	5P10	7,350

Note :

1. For any non-standard item, please contact local sales office



# Metering Current Transformers



## Wound Primary Type : Rish Xmer

Standard Secondary current: 5A

Group	Primary Current (A)	Class 0.2		Class 0.5		Class 1	
		VA	LP (INR)	VA	LP (INR)	VA	LP (INR)
<b>Rish Xmer 62/W</b>							
XW01	1	1	560	2.5	525	5	500
	2.5	1	560	2.5	525	5	500
	5	1	560	2.5	525	5	500
	7.5	1	560	2.5	525	5	500
	10	1	560	2.5	525	5	500
	15	1	560	2.5	525	5	500
	20	1	560	2.5	525	5	500
	25	1	560	2.5	525	5	500
	30	1	560	2.5	525	5	500
<b>Rish Xmer 74/W</b>							
XW02	1	1.5	705	5	650	10	620
	2.5	1.5	705	5	650	10	620
	5	1.5	705	5	650	10	620
	7.5	1.5	705	5	650	10	620
	10	1.5	705	5	650	10	620
	15	1.5	705	5	650	10	620
	20	1.5	705	5	650	10	620
	25	1.5	705	5	650	10	620
	30	1.5	705	5	650	10	620
	40	1.5	705	5	650	10	620
	50	1.5	705	5	650	10	620
	60	1.5	705	5	650	10	620

Note :

1. Please add INR 120 for 1A secondary current (Before ordering, please check feasibility with local sales office)
2. For any non-standard item, please contact local sales office



# Metering Current Transformers



## Busbar Type : Rish Xmer

Standard Secondary current: 5A

Group	Primary Current (A)	Type OD/ID (Axial)	Class 0.5		Class 1	
			VA	LP (INR)	VA	LP (INR)
<b>Rish Xmer 45/14 (40)</b>						
XM01	30	45/14 (40)	-	-	1	520
	40	45/14 (40)	-	-	1	505
	50	45/14 (40)	-	-	1.5	320
	60	45/14 (40)	-	-	1.5	320
	75	45/14 (40)	1.5	340	2.5	325
	80	45/14 (40)	1.5	340	2.5	325
	100	45/14 (40)	1.5	345	3.75	340
	120	45/14 (40)	2.5	350	3.75	340
	125	45/14 (40)	2.5	350	3.75	340
	150	45/14 (40)	2.5	405	5	340
	200	45/14 (40)	3.75	435	7.5	405
	250	45/14 (40)	5	465	7.5	425
	300	45/14 (40)	5	475	10	455
<b>Rish Xmer 45/21 (40)</b>						
XM02	50	45/21 (40)	-	-	1.5	355
	60	45/21 (40)	-	-	1.5	355
	75	45/21 (40)	-	-	2.5	355
	80	45/21 (40)	1	355	2.5	355
	100	45/21 (40)	1.5	375	3.75	375
	120	45/21 (40)	1.5	375	3.75	375
	125	45/21 (40)	2.5	375	3.75	375
	150	45/21 (40)	2.5	390	5	390
	200	45/21 (40)	3.75	390	5	390
	250	45/21 (40)	5	390	5	390
	300	45/21 (40)	5	415	5	390
	400	45/21 (40)	5	440	5	425
<b>Rish Xmer 50/14 (30)</b>						
XM03	40	50/14 (30)	-	-	1	340
	50	50/14 (30)	-	-	1.5	320
	60	50/14 (30)	-	-	1.5	325
	75	50/14 (30)	-	-	1.5	300
	80	50/14 (30)	-	-	1.5	300
	100	50/14 (30)	2.5	380	3.75	325
	120	50/14 (30)	2.5	415	3.75	345
	125	50/14 (30)	2.5	415	3.75	345
	150	50/14 (30)	3.75	420	5	350
	200	50/14 (30)	3.75	435	5	375
	250	50/14 (30)	5	455	7.5	385
	300	50/14 (30)	7.5	470	7.5	400

# Metering Current Transformers



## Busbar Type : Rish Xmer

Standard Secondary current: 5A

Group	Primary Current (A)	Type OD/ID (Axial)	Class 0.5		Class 1	
			VA	LP (INR)	VA	LP (INR)
<b>Rish Xmer 50/14 (50)</b>						
XM04	30	50/14 (50)	-	-	1	605
	40	50/14 (50)	-	-	1	590
	50	50/14 (50)	1.5	620	1.5	590
	60	50/14 (50)	1.5	620	1.5	590
	75	50/14 (50)	2.5	620	5	620
	80	50/14 (50)	2.5	560	5	560
	100	50/14 (50)	3.75	595	5	480
	120	50/14 (50)	3.75	500	5	495
	125	50/14 (50)	3.75	500	5	495
	150	50/14 (50)	5	525	7.5	525
	200	50/14 (50)	7.5	525	10	525
	250	50/14 (50)	10	595	12.5	560
	300	50/14 (50)	10	675	12.5	560
<b>Rish Xmer 50/21 (30)</b>						
XM05	50	50/21 (30)	-	-	1	300
	60	50/21 (30)	-	-	1	300
	75	50/21 (30)	-	-	1.5	300
	80	50/21 (30)	1	420	2.5	300
	100	50/21 (30)	1.5	425	2.5	310
	120	50/21 (30)	2.5	380	2.5	310
	125	50/21 (30)	2.5	385	3.75	315
	150	50/21 (30)	2.5	390	5	325
	200	50/21 (30)	3.75	400	5	335
	250	50/21 (30)	5	405	5	340
	300	50/21 (30)	5	420	7.5	350
	400	50/21 (30)	5	460	7.5	390
<b>Rish Xmer 50/21 (50)</b>						
XM06	50	50/21 (50)	1	595	2.5	595
	60	50/21 (50)	1.5	595	3.75	595
	75	50/21 (50)	1.5	595	3.75	560
	80	50/21 (50)	2.5	595	5	595
	100	50/21 (50)	2.5	600	5	560
	120	50/21 (50)	3.75	605	5	570
	125	50/21 (50)	5	610	5	585
	150	50/21 (50)	5	620	10	605
	200	50/21 (50)	10	625	12.5	610
	250	50/21 (50)	10	630	15	620
	300	50/21 (50)	7.5	635	12.5	625
	400	50/21 (50)	10	640	15	630



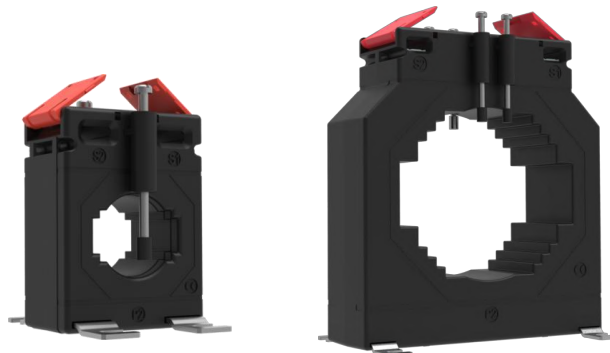
# Metering Current Transformers



## Busbar Type : Rish Xmer

Standard Secondary current: 5A

Group	Primary Current (A)	Type OD/ID (Axial)	Class 0.5		Class 1	
			VA	LP (INR)	VA	LP (INR)
<b>Rish Xmer 50/30 (30)</b>						
XM07	75	50/30 (30)	-	-	1	300
	80	50/30 (30)	-	-	1.5	300
	100	50/30 (30)	1	325	2.5	305
	120	50/30 (30)	1	320	2.5	305
	125	50/30 (30)	1	325	2.5	310
	150	50/30 (30)	2.5	325	3.75	310
	200	50/30 (30)	2.5	345	5	325
	250	50/30 (30)	5	365	5	345
	300	50/30 (30)	5	375	5	350
	400	50/30 (30)	5	380	6.25	355
	500	50/30 (30)	5	385	6.25	360
	600	50/30 (30)	5	390	7.5	365
<b>Rish Xmer 50/30 (50)</b>						
XM08	50	50/30 (50)	-	-	1.5	430
	60	50/30 (50)	-	-	1.5	435
	75	50/30 (50)	-	-	2.5	440
	80	50/30 (50)	-	-	2.5	440
	100	50/30 (50)	1	510	3.75	460
	120	50/30 (50)	2.5	510	5	465
	125	50/30 (50)	2.5	510	5	465
	150	50/30 (50)	5	500	5	465
	200	50/30 (50)	5	515	7.5	475
	250	50/30 (50)	5	540	10	475
	300	50/30 (50)	5	545	10	500
	400	50/30 (50)	10	585	12.5	510
	500	50/30 (50)	10	625	12.5	525
	600	50/30 (50)	10	665	15	560



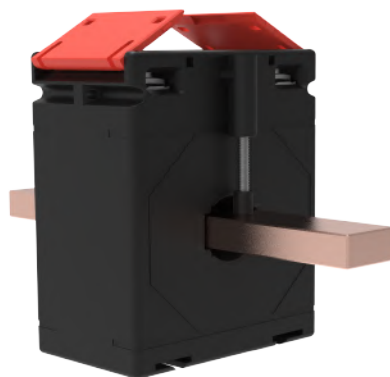
# Metering Current Transformers



## Busbar Type : Rish Xmer

Standard Secondary current: 5A

Group	Primary Current (A)	Type OD/ID (Axial)	Class 0.2s		Class 0.2		Class 0.5		Class 1	
			VA	LP (INR)	VA	LP (INR)	VA	LP (INR)	VA	LP (INR)
<b>Rish Xmer 62/R</b>										
XM09	50	62/R	-	-	-	-	-	-	1.5	440
	60	62/R	-	-	-	-	-	-	2.5	445
	75	62/R	-	-	-	-	1.5	660	2.5	540
	80	62/R	-	-	-	-	2.5	665	2.5	540
	100	62/R	-	-	1.5	705	2.5	675	5	600
	120	62/R	-	-	1.5	720	3.75	680	5	605
	125	62/R	-	-	1.5	725	3.75	685	5	610
	150	62/R	2.5	1,320	2.5	730	5	705	7.5	625
	200	62/R	5	1,320	5	760	7.5	720	10	645
	250	62/R	5	1,320	5	785	10	745	15	665
	300	62/R	5	1,320	5	830	10	770	15	685
	400	62/R	5	1,320	10	870	15	810	15	730
	500	62/R	-	-	10	905	15	855	15	785
	600	62/R	-	-	10	920	15	880	15	810
<b>Rish Xmer 62/20 (40)</b>										
XM10	50	62/20 (40)	-	-	-	-	-	-	1.5	440
	60	62/20 (40)	-	-	-	-	-	-	2.5	445
	75	62/20 (40)	-	-	-	-	1.5	660	3.75	590
	80	62/20 (40)	-	-	-	-	2.5	665	3.75	590
	100	62/20 (40)	1.5	1,455	1.5	740	2.5	675	5	600
	120	62/20 (40)	1.5	1,455	1.5	740	3.75	680	5	605
	125	62/20 (40)	1.5	1,455	1.5	740	3.75	685	5	610
	150	62/20 (40)	2.5	1,455	2.5	730	5	705	7.5	625
	200	62/20 (40)	3.75	1,455	5	745	7.5	720	10	645
	250	62/20 (40)	3.75	1,455	5	765	10	745	15	665
	300	62/20 (40)	5	1,455	5	790	10	770	15	685
	400	62/20 (40)	5	1,455	10	835	15	810	15	730
	500	62/20 (40)	5	1,455	10	835	15	810	15	730



# Metering Current Transformers



## Busbar Type : Rish Xmer

Standard Secondary current: 5A

Group	Primary Current (A)	Type OD/ID (Axial)	Class 0.2s		Class 0.2		Class 0.5		Class 1	
			VA	LP (INR)	VA	LP (INR)	VA	LP (INR)	VA	LP (INR)
<b>Rish Xmer 62/30 (40)</b>										
XM11	50	62/30 (40)	-	-	-	-	-	-	1.25	460
	60	62/30 (40)	-	-	-	-	-	-	1.5	460
	75	62/30 (40)	-	-	-	-	-	-	2.5	460
	80	62/30 (40)	-	-	-	-	-	-	2	460
	100	62/30 (40)	1	1,440	1	525	1.5	520	3.75	465
	120	62/30 (40)	1	1,440	1	540	2.5	525	3.75	470
	125	62/30 (40)	1	1,440	1	540	2.5	525	3.75	475
	150	62/30 (40)	2.5	1,440	1.5	545	3.75	540	7.5	485
	200	62/30 (40)	5	1,440	3.75	560	5	550	10	500
	250	62/30 (40)	5	1,440	5	585	5	565	10	525
	300	62/30 (40)	5	1,440	3.75	600	10	590	15	540
	400	62/30 (40)	5	1,440	10	645	12.5	630	15	580
	500	62/30 (40)	5	1,440	10	650	12.5	640	15	585
	600	62/30 (40)	7.5	1,440	10	685	15	660	20	605
	750	62/30 (40)	10	1,440	10	720	15	675	15	625
	800	62/30 (40)	10	1,440	10	720	15	675	15	640
<b>Rish Xmer 62/30 (50)</b>										
XM12	50	62/30 (50)	-	-	-	-	-	-	1.5	675
	60	62/30 (50)	-	-	-	-	-	-	2.5	675
	75	62/30 (50)	-	-	-	-	2.5	705	2.5	675
	80	62/30 (50)	-	-	-	-	2.5	705	3.75	675
	100	62/30 (50)	1.25	1,485	1.25	760	2.5	740	5	705
	120	62/30 (50)	1.25	1,485	1.25	760	5	740	5	705
	125	62/30 (50)	1.25	1,485	1.25	760	5	740	5	705
	150	62/30 (50)	2.5	1,485	2	790	5	740	7.5	705
	200	62/30 (50)	5	1,485	3.75	790	10	740	15	705
	250	62/30 (50)	5	1,485	5	800	15	760	15	720
	300	62/30 (50)	5	1,485	5	800	15	760	15	720
	400	62/30 (50)	10	1,485	6.25	825	15	770	30	740
	500	62/30 (50)	10	1,485	7.5	835	15	800	30	770
	600	62/30 (50)	10	1,485	10	870	20	835	30	800
	750	62/30 (50)	10	1,485	10	965	20	920	30	890
	800	62/30 (50)	10	1,485	10	1,005	20	935	30	905

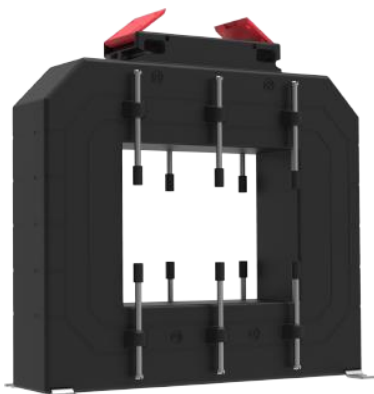
# Metering Current Transformers



## Busbar Type : Rish Xmer

Standard Secondary current: 5A

Group	Primary Current (A)	Type OD/ID (Axial)	Class 0.2s		Class 0.2		Class 0.5		Class 1	
			VA	LP (INR)	VA	LP (INR)	VA	LP (INR)	VA	LP (INR)
<b>Rish Xmer 62/40 (40)</b>										
XM13	100	62/40 (40)	-	-	-	-	-	-	1.5	335
	120	62/40 (40)	-	-	-	-	-	-	1.5	340
	125	62/40 (40)	-	-	-	-	-	-	1.5	340
	150	62/40 (40)	-	-	-	-	-	-	2.5	345
	200	62/40 (40)	1	1,405	1	405	1.5	390	3.75	365
	250	62/40 (40)	1.5	1,405	1.5	420	2.5	405	5	385
	300	62/40 (40)	1.5	1,405	1.5	435	5	420	5	390
	400	62/40 (40)	2.5	1,405	2.5	470	5	455	5	390
	500	62/40 (40)	2.5	1,405	5	475	5	460	7.5	390
	600	62/40 (40)	3.75	1,405	7.5	495	7.5	465	10	390
	750	62/40 (40)	5	1,405	10	500	10	465	10	390
800	62/40 (40)	5	1,405	10	510	10	475	10	390	
<b>Rish Xmer 74/20 (45)</b>										
XM14	40	74/20 (45)	-	-	-	-	-	-	1.5	960
	50	74/20 (45)	-	-	-	-	1	1,050	2.5	960
	60	74/20 (45)	-	-	-	-	1	1,050	3.75	965
	75	74/20 (45)	-	-	-	-	1.5	1,050	5	965
	80	74/20 (45)	-	-	-	-	2.5	1,050	5	965
	100	74/20 (45)	1.5	1,555	1.5	925	5	890	7.5	870
	120	74/20 (45)	1.5	1,555	1.5	935	5	910	10	875
	125	74/20 (45)	1.5	1,555	1.5	960	5	925	10	875
	150	74/20 (45)	2.5	1,555	2.5	995	7.5	960	12.5	915
	200	74/20 (45)	5	1,555	5	765	10	730	15	705
	250	74/20 (45)	5	1,555	5	805	10	770	15	720
	300	74/20 (45)	5	1,555	7.5	825	15	790	15	730
	400	74/20 (45)	5	1,555	10	850	15	820	20	770
	500	74/20 (45)	5	1,555	10	850	15	820	15	770



# Metering Current Transformers



## Busbar Type : Rish Xmer

Standard Secondary current: 5A

Group	Primary Current (A)	Type OD/ID (Axial)	Class 0.2s		Class 0.2		Class 0.5		Class 1	
			VA	LP (INR)	VA	LP (INR)	VA	LP (INR)	VA	LP (INR)
<b>Rish Xmer 74/30 (45)</b>										
XM15	40	74/30 (45)	-	-	-	-	-	-	1.5	850
	50	74/30 (45)	-	-	-	-	-	-	1.5	855
	60	74/30 (45)	-	-	-	-	-	-	2.5	855
	75	74/30 (45)	-	-	-	-	1.5	985	2.5	855
	80	74/30 (45)	-	-	-	-	1.5	875	3.75	855
	100	74/30 (45)	1.5	1,605	1.5	895	2.5	875	5	855
	120	74/30 (45)	1.5	1,605	1.5	720	2.5	700	5	630
	125	74/30 (45)	1.5	1,605	1.5	725	2.5	705	5	650
	150	74/30 (45)	1.5	1,605	1.5	690	5	675	7.5	665
	200	74/30 (45)	2.5	1,605	2.5	760	10	770	15	755
	250	74/30 (45)	2.5	1,605	2.5	790	10	780	15	755
	300	74/30 (45)	5	1,605	5	805	10	790	15	765
	400	74/30 (45)	5	1,605	7.5	880	15	850	20	790
	500	74/30 (45)	5	1,605	10	885	15	855	20	800
	600	74/30 (45)	5	1,605	15	890	15	870	20	820
	750	74/30 (45)	7.5	1,605	20	1,010	20	985	30	905
800	74/30 (45)	10	1,605	30	1,030	30	1,005	30	925	
<b>Rish Xmer 74/40 (45)</b>										
XM16	40	74/40 (45)	-	-	-	-	-	-	1	590
	50	74/40 (45)	-	-	-	-	-	-	1.5	595
	60	74/40 (45)	-	-	-	-	-	-	1.5	605
	75	74/40 (45)	-	-	-	-	-	-	2.5	605
	80	74/40 (45)	-	-	-	-	-	-	2.5	605
	100	74/40 (45)	1	1,690	-	-	1.5	700	3.75	620
	120	74/40 (45)	1	1,690	-	-	1.5	705	2.5	630
	125	74/40 (45)	1	1,690	-	-	1.5	635	2.5	630
	150	74/40 (45)	1.5	1,690	1	680	3.75	645	5	630
	200	74/40 (45)	2.5	1,690	2.5	700	5	665	10	635
	250	74/40 (45)	5	1,690	3.75	700	5	665	10	640
	300	74/40 (45)	5	1,690	5	705	10	670	15	645
	400	74/40 (45)	5	1,690	10	750	10	715	15	650
	500	74/40 (45)	5	1,690	10	785	15	750	20	680
	600	74/40 (45)	5	1,690	15	810	15	780	20	700
	750	74/40 (45)	5	1,690	15	820	15	780	20	705
800	74/40 (45)	7.5	1,690	15	820	15	780	20	705	
1000	74/40 (45)	10	1,690	15	825	15	785	20	710	

# Metering Current Transformers



## Busbar Type : Rish Xmer

Standard Secondary current: 5A

Group	Primary Current (A)	Type OD/ID (Axial)	Class 0.2s		Class 0.2		Class 0.5		Class 1	
			VA	LP (INR)	VA	LP (INR)	VA	LP (INR)	VA	LP (INR)
<b>Rish Xmer 74/50 (45)</b>										
XM17	100	74/50 (45)	-	-	-	-	-	-	1.5	455
	120	74/50 (45)	-	-	-	-	-	-	1.5	465
	125	74/50 (45)	-	-	-	-	-	-	1.5	465
	150	74/50 (45)	-	-	-	-	-	-	2.5	475
	200	74/50 (45)	-	-	-	-	1.5	555	3.75	500
	250	74/50 (45)	1.5	1,775	1.5	590	2.5	555	5	510
	300	74/50 (45)	1.5	1,775	1.5	610	5	580	7.5	540
	400	74/50 (45)	2.5	1,775	2.5	610	5	580	7.5	545
	500	74/50 (45)	5	1,775	5	620	7.5	585	10	560
	600	74/50 (45)	5	1,775	7.5	630	10	595	12.5	585
	750	74/50 (45)	5	1,775	10	670	12.5	635	15	595
	800	74/50 (45)	7.5	1,775	10	680	12.5	645	15	620
1000	74/50 (45)	10	1,775	10	740	12.5	705	15	665	
<b>Rish Xmer 86/40 (45)</b>										
XM18	50	86/40 (45)	-	-	-	-	-	-	1.5	765
	60	86/40 (45)	-	-	-	-	-	-	1.5	765
	75	86/40 (45)	-	-	-	-	-	-	2.5	770
	80	86/40 (45)	-	-	-	-	-	-	2.5	770
	100	86/40 (45)	1.5	1,860	1.5	770	2.5	770	5	770
	120	86/40 (45)	1.5	1,860	1.5	790	2.5	770	5	770
	125	86/40 (45)	1.5	1,860	1.5	790	2.5	770	5	770
	150	86/40 (45)	2.5	1,860	2.5	750	5	685	10	635
	200	86/40 (45)	5	1,860	2.5	720	7.5	710	15	670
	250	86/40 (45)	10	1,860	5	790	7.5	770	15	700
	300	86/40 (45)	10	1,860	10	820	15	810	15	725
	400	86/40 (45)	10	1,860	15	855	15	845	20	765
	500	86/40 (45)	5	1,860	15	890	30	885	30	800
	600	86/40 (45)	7.5	1,860	15	915	30	905	30	820
	750	86/40 (45)	7.5	1,860	15	960	30	955	30	875
	800	86/40 (45)	10	1,860	15	985	30	955	30	720
1000	86/40 (45)	10	1,860	15	1,000	30	955	30	780	

# Metering Current Transformers



## Busbar Type : Rish Xmer

Standard Secondary current: 5A

Group	Primary Current (A)	Type OD/ID (Axial)	Class 0.2s		Class 0.2		Class 0.5		Class 1	
			VA	LP (INR)	VA	LP (INR)	VA	LP (INR)	VA	LP (INR)
<b>Rish Xmer 86/50 (45)</b>										
XM19	100	86/50 (45)	-	-	-	-	1	675	1.5	600
	120	86/50 (45)	-	-	-	-	1.5	675	2.5	605
	125	86/50 (45)	-	-	-	-	1.5	680	2.5	610
	150	86/50 (45)	-	-	-	-	2.5	685	5	620
	200	86/50 (45)	2.5	1,940	1	715	5	715	7.5	640
	250	86/50 (45)	2.5	1,940	1.5	715	7.5	730	10	660
	300	86/50 (45)	5	1,940	3.75	715	7.5	665	10	660
	400	86/50 (45)	7.5	1,940	5	725	15	665	15	660
	500	86/50 (45)	7.5	1,940	10	675	15	665	20	665
	600	86/50 (45)	10	1,940	15	705	15	665	20	670
	750	86/50 (45)	7.5	1,940	15	710	15	675	20	675
	800	86/50 (45)	10	1,940	12.5	835	20	800	30	740
	1000	86/50 (45)	10	1,940	20	890	30	855	30	800
	1200	86/50 (45)	12.5	1,940	20	830	30	800	30	750
1250	86/50 (45)	12.5	1,940	20	845	30	810	30	770	
<b>Rish Xmer 86/60 (45)</b>										
XM20	100	86/60 (45)	-	-	-	-	-	-	1	595
	120	86/60 (45)	-	-	-	-	-	-	1.5	555
	125	86/60 (45)	-	-	-	-	-	-	2.5	555
	150	86/60 (45)	-	-	-	-	-	-	2.5	560
	200	86/60 (45)	-	-	-	-	1.5	650	3.75	590
	250	86/60 (45)	-	-	-	-	2.5	665	5	605
	300	86/60 (45)	2.5	1,940	1.5	730	5	685	7.5	625
	400	86/60 (45)	3.75	1,940	2.5	760	10	715	12.5	650
	500	86/60 (45)	5	1,940	3.75	760	10	715	15	660
	600	86/60 (45)	5	1,940	5	760	15	715	15	665
	750	86/60 (45)	5	1,940	10	810	15	765	20	705
	800	86/60 (45)	7.5	1,940	12.5	835	20	790	20	720
	1000	86/60 (45)	10	1,940	15	870	20	825	30	780
	1200	86/60 (45)	10	1,940	15	880	20	835	30	835
	1250	86/60 (45)	10	1,940	15	935	20	890	20	845
	1500	86/60 (45)	10	1,940	15	985	20	935	20	885
1600	86/60 (45)	10	1,940	15	1,010	20	965	20	915	



# Metering Current Transformers



## Busbar Type : Rish Xmer

Standard Secondary current: 5A

Group	Primary Current (A)	Type OD/ID (Axial)	Class 0.2s		Class 0.2		Class 0.5		Class 1	
			VA	LP (INR)	VA	LP (INR)	VA	LP (INR)	VA	LP (INR)
<b>Rish Xmer 100/100V (45)</b>										
XR01	400	100/100V (45)	-	-	-	-	2.5	1,010	5	915
	500	100/100V (45)	-	-	-	-	2.5	1,035	5	935
	600	100/100V (45)	-	-	-	-	2.5	1,065	5	960
	750	100/100V (45)	-	-	-	-	2.5	1,095	5	1,005
	800	100/100V (45)	-	-	-	-	5	1,110	10	1,015
	1000	100/100V (45)	-	-	5	1,190	10	1,165	15	1,070
	1200	100/100V (45)	5	1,655	5	1,240	10	1,215	15	1,125
	1250	100/100V (45)	5	1,655	5	1,285	10	1,230	15	1,135
	1500	100/100V (45)	5	1,655	5	1,330	15	1,310	30	1,200
	1600	100/100V (45)	7.5	1,655	10	1,420	15	1,325	30	1,250
	2000	100/100V (45)	7.5	1,655	10	1,460	15	1,440	30	1,255
	2500	100/100V (45)	10	1,655	10	1,570	15	1,530	20	1,280
<b>Rish Xmer 100/130V (45)</b>										
XR02	400	100/130V(45)	-	-	-	-	2.5	1,080	5	970
	500	100/130V(45)	-	-	-	-	2.5	1,130	5	1,015
	600	100/130V(45)	-	-	-	-	2.5	1,190	5	1,070
	750	100/130V(45)	-	-	-	-	2.5	1,255	5	1,135
	800	100/130V(45)	-	-	-	-	5	1,300	10	1,170
	1000	100/130V(45)	-	-	-	-	10	1,390	15	1,260
	1200	100/130V(45)	-	-	-	-	10	1,480	15	1,350
	1250	100/130V(45)	-	-	-	-	10	1,525	15	1,395
	1500	100/130V(45)	-	-	5	1,665	15	1,640	30	1,500
	1600	100/130V(45)	-	-	5	1,730	15	1,705	30	1,565
	2000	100/130V(45)	-	-	5	1,920	15	1,760	30	1,580
	2500	100/130V(45)	-	-	5	2,115	15	1,780	30	1,615
	3000	100/130V(45)	-	-	5	2,165	10	1,815	12.5	1,605
	3200	100/130V(45)	-	-	5	2,165	10	1,815	12.5	1,620



# Metering Current Transformers



## Busbar Type : Rish Xmer

Standard Secondary current: 5A

Group	Primary Current (A)	Type OD/ID (Axial)	Class 0.2s		Class 0.2		Class 0.5		Class 1	
			VA	LP (INR)	VA	LP (INR)	VA	LP (INR)	VA	LP (INR)
<b>Rish Xmer 104/60 (45)</b>										
XM21	100	104/60 (45)	-	-	-	-	-	-	1.5	785
	120	104/60 (45)	-	-	-	-	-	-	2.5	790
	125	104/60 (45)	-	-	-	-	-	-	2.5	790
	150	104/60 (45)	-	-	-	-	2.5	905	5	800
	200	104/60 (45)	-	-	1	965	5	925	10	825
	250	104/60 (45)	-	-	2.5	965	7.5	950	12.5	840
	300	104/60 (45)	1.5	2,025	3.75	985	10	965	15	865
	400	104/60 (45)	2.5	2,025	7.5	975	10	960	15	855
	500	104/60 (45)	7.5	2,025	10	925	15	910	20	870
	600	104/60 (45)	15	2,025	15	960	15	935	30	875
	750	104/60 (45)	15	2,025	15	1,010	20	985	30	895
	800	104/60 (45)	15	2,025	15	1,085	30	955	30	920
	1000	104/60 (45)	15	2,025	20	1,135	30	1,110	45	1,025
	1200	104/60 (45)	15	2,025	30	1,170	30	1,155	45	1,065
	1250	104/60 (45)	15	2,025	30	1,195	30	1,170	45	1,080
	1500	104/60 (45)	15	2,025	30	1,245	30	1,215	45	1,135
1600	104/60 (45)	15	2,025	30	1,275	30	1,255	45	1,165	
<b>Rish Xmer 104/80 (45)</b>										
XM22	200	104/80 (45)	-	-	-	-	-	-	1.5	600
	250	104/80 (45)	-	-	-	-	1.5	675	2.5	620
	300	104/80 (45)	-	-	-	-	2.5	705	7.5	640
	400	104/80 (45)	-	-	1.5	760	7.5	730	10	675
	500	104/80 (45)	-	-	5	685	10	665	10	680
	600	104/80 (45)	3.75	2,110	5	715	10	700	12.5	680
	750	104/80 (45)	5	2,110	5	790	15	770	15	710
	800	104/80 (45)	5	2,110	7.5	800	15	785	15	720
	1000	104/80 (45)	7.5	2,110	12.5	855	20	800	30	785
	1200	104/80 (45)	10	2,110	15	915	20	870	30	835
	1250	104/80 (45)	10	2,110	15	925	20	905	30	845
	1500	104/80 (45)	10	2,110	15	955	20	925	30	880
	1600	104/80 (45)	10	2,110	15	990	20	985	30	910
	2000	104/80 (45)	10	2,110	15	1,085	20	1,050	30	1,015

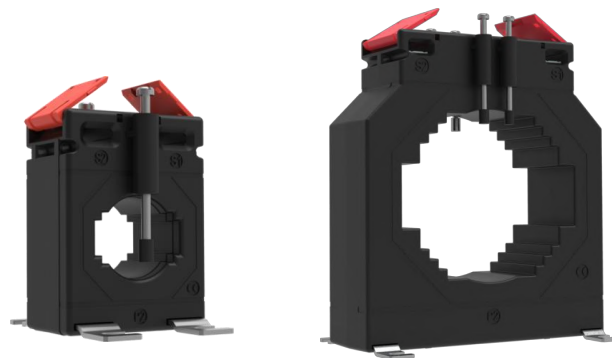
# Metering Current Transformers



## Busbar Type : Rish Xmer

Standard Secondary current: 5A

Group	Primary Current (A)	Type OD/ID (Axial)	Class 0.2s		Class 0.2		Class 0.5		Class 1	
			VA	LP (INR)	VA	LP (INR)	VA	LP (INR)	VA	LP (INR)
<b>Rish Xmer 140/80 (45)</b>										
XM23	200	140/80 (45)	-	-	-	-	2.5	895	5	800
	250	140/80 (45)	-	-	-	-	5	915	10	810
	300	140/80 (45)	-	-	1.5	950	7.5	925	15	830
	400	140/80 (45)	-	-	2.5	1,010	10	990	20	890
	500	140/80 (45)	2.5	2,195	5	1,155	15	1,135	30	1,015
	600	140/80 (45)	3.75	2,195	7.5	1,160	15	1,070	30	1,015
	750	140/80 (45)	5	2,195	10	1,230	15	1,210	45	1,085
	800	140/80 (45)	5	2,195	10	1,250	15	1,220	45	1,105
	1000	140/80 (45)	10	2,195	15	1,315	30	1,290	60	1,170
	1200	140/80 (45)	12.5	2,195	15	1,350	30	1,320	60	1,190
	1250	140/80 (45)	12.5	2,195	30	1,380	60	1,330	60	1,200
	1500	140/80 (45)	15	2,195	30	1,400	60	1,350	60	1,215
	1600	140/80 (45)	15	2,195	30	1,440	60	1,370	60	1,240
	2000	140/80 (45)	15	2,195	30	1,485	60	1,420	60	1,250
<b>Rish Xmer 130/100 (50)</b>										
XR06	600	130/100 (50)	2.5	1,690	2.5	2,130	5	1,930	10	1,825
	750	130/100 (50)	3.75	1,690	5	2,230	10	1,930	10	1,825
	800	130/100 (50)	5	1,690	7.5	2,335	10	1,930	10	1,825
	1000	130/100 (50)	7.5	1,690	10	2,335	15	2,230	15	1,930
	1200	130/100 (50)	10	2,110	10	2,335	15	2,230	15	1,930
	1250	130/100 (50)	10	2,110	10	2,430	15	2,230	15	1,930
	1500	130/100 (50)	10	2,110	15	2,560	15	2,430	15	1,930
	1600	130/100 (50)	10	2,110	15	2,560	15	2,430	15	2,105
	2000	130/100 (50)	10	2,110	15	2,745	15	2,615	15	2,280
	2500	130/100 (50)	10	3,075	15	2,835	15	2,710	15	2,460
	3000	130/100 (50)	12.5	3,075	15	2,965	15	2,840	15	2,590



# Metering Current Transformers



## Busbar Type : Rish Xmer

Standard Secondary current: 5A

Group	Primary Current (A)	Type OD/ID (Axial)	Class 0.2s		Class 0.2		Class 0.5		Class 1	
			VA	LP (INR)	VA	LP (INR)	VA	LP (INR)	VA	LP (INR)
<b>Rish Xmer 140/100H (45)</b>										
XM24	200	140/100H (45)	-	-	-	-	1.5	870	3.75	770
	250	140/100H (45)	-	-	-	-	2.5	885	5	790
	300	140/100H (45)	-	-	-	-	3.75	915	7.5	810
	400	140/100H (45)	-	-	1.5	955	7.5	935	10	840
	500	140/100H (45)	-	-	2.5	985	10	965	12.5	880
	600	140/100H (45)	2.5	2,280	3.75	985	10	965	15	880
	750	140/100H (45)	5	2,280	5	1,030	15	1,010	20	925
	800	140/100H (45)	5	2,280	5	1,050	15	1,030	20	935
	1000	140/100H (45)	10	2,280	10	1,105	15	1,085	20	995
	1200	140/100H (45)	10	2,280	15	1,165	15	1,140	30	1,055
	1250	140/100H (45)	10	2,280	15	1,175	15	1,155	30	1,065
	1500	140/100H (45)	15	2,280	20	1,250	20	1,230	30	1,140
	1600	140/100H (45)	15	2,280	20	1,340	20	1,255	45	1,230
	2000	140/100H (45)	15	2,280	30	1,465	45	1,360	45	1,350
	2500	140/100H (45)	15	2,280	30	1,540	45	1,480	45	1,435
	3000	140/100H (45)	15	2,280	30	1,685	60	1,620	60	1,580
	4000	140/100H (45)	15	2,280	30	1,735	60	1,720	60	1,645
<b>Rish Xmer 140/100V(45)</b>										
XM25	200	140/100V (45)	-	-	-	-	1.5	870	3.75	770
	250	140/100V (45)	-	-	-	-	2.5	885	5	790
	300	140/100V (45)	-	-	-	-	3.75	915	7.5	810
	400	140/100V (45)	-	-	1.5	955	10	935	10	840
	500	140/100V (45)	-	-	2.5	985	10	965	12.5	880
	600	140/100V (45)	2.5	2,280	3.75	985	12.5	965	15	880
	750	140/100V (45)	5	2,280	5	1,030	15	1,010	20	925
	800	140/100V (45)	5	2,280	5	1,050	15	1,030	20	935
	1000	140/100V (45)	10	2,280	10	1,105	15	1,085	20	995
	1200	140/100V (45)	10	2,280	15	1,165	15	1,140	30	1,055
	1250	140/100V (45)	10	2,280	15	1,175	15	1,155	30	1,065
	1500	140/100V (45)	15	2,280	20	1,250	30	1,230	30	1,140
	1600	140/100V (45)	15	2,280	20	1,340	45	1,330	45	1,230
	2000	140/100V (45)	15	2,280	30	1,465	45	1,455	45	1,350
	2500	140/100V (45)	15	2,280	30	1,535	45	1,520	45	1,435
	3000	140/100V (45)	15	2,280	30	1,685	60	1,665	60	1,580

# Metering Current Transformers



## Busbar Type : Rish Xmer

Standard Secondary current: 5A

Group	Primary Current (A)	Type OD/ID (Axial)	Class 0.2s		Class 0.2		Class 0.5		Class 1	
			VA	LP (INR)	VA	LP (INR)	VA	LP (INR)	VA	LP (INR)
<b>Rish Xmer 140/130V(45)</b>										
XR03	400	140/130V (45)	-	-	-	-	3.75	1,170	5	1,050
	500	140/130V (45)	-	-	-	-	3.75	1,215	5	1,095
	600	140/130V (45)	-	-	-	-	3.75	1,275	5	1,150
	750	140/130V (45)	-	-	-	-	5	1,350	7.5	1,220
	800	140/130V (45)	-	-	-	-	5	1,395	7.5	1,260
	1000	140/130V (45)	-	-	5	1,560	10	1,485	10	1,350
	1200	140/130V (45)	-	-	7.5	1,650	10	1,580	15	1,445
	1250	140/130V (45)	-	-	7.5	1,700	10	1,635	15	1,485
	1500	140/130V (45)	-	-	10	1,820	15	1,745	15	1,600
	1600	140/130V (45)	-	-	10	1,890	15	1,820	15	1,665
	2000	140/130V (45)	-	-	15	2,065	20	1,990	20	1,745
	2500	140/130V (45)	-	-	15	2,130	20	1,990	20	1,745
	3000	140/130V (45)	-	-	15	2,150	20	2,090	20	1,860
	3200	140/130V (45)	-	-	15	2,175	20	2,105	20	1,935
	4000	140/130V (45)	-	-	15	2,245	20	2,175	20	1,980
5000	140/130V (45)	-	-	15	2,300	20	2,260	20	2,055	
<b>Rish Xmer 225/125(50)</b>										
XR04	600	225/125 (50)	-	-	5	1,580	5	1,455	10	1,330
	750	225/125 (50)	-	-	5	1,565	10	1,445	10	1,330
	800	225/125 (50)	-	-	5	1,570	10	1,455	10	1,335
	1000	225/125 (50)	5	2,230	10	1,580	10	1,465	15	1,445
	1200	225/125 (50)	5	2,600	10	1,635	10	1,515	15	1,495
	1250	225/125 (50)	5	2,600	10	1,645	10	1,565	15	1,530
	1500	225/125 (50)	7.5	2,600	10	1,695	15	1,615	30	1,575
	1600	225/125 (50)	7.5	2,600	10	1,695	15	1,620	30	1,575
	2000	225/125 (50)	10	3,205	10	1,720	15	1,610	30	1,575
	2500	225/125 (50)	10	3,430	15	1,845	30	1,730	30	1,620
	3000	225/125 (50)	10	3,430	15	1,935	30	1,855	60	1,820
	4000	225/125 (50)	15	3,730	30	2,155	45	1,970	60	1,930
	5000	225/125 (50)	15	4,185	30	2,410	100	2,335	100	2,245
	6000	225/125 (50)	15	4,660	60	2,590	100	2,495	100	2,450

# Metering Current Transformers



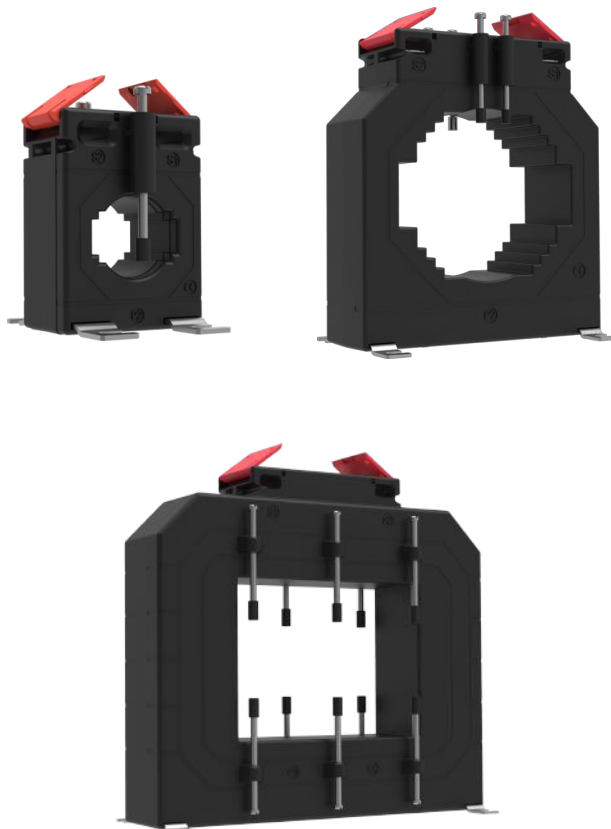
## Busbar Type : Rish Xmer

Standard Secondary current: 5A

Group	Primary Current (A)	Type OD/ID (Axial)	Class 0.2s		Class 0.2		Class 0.5		Class 1	
			VA	LP (INR)	VA	LP (INR)	VA	LP (INR)	VA	LP (INR)
<b>Rish Xmer 225/167(50)</b>										
XR05	1000	225/167 (50)	-	-	3.75	1,440	5	1,405	10	1,310
	1200	225/167 (50)	-	-	5	1,580	10	1,555	15	1,500
	1250	225/167 (50)	-	-	5	1,595	10	1,565	15	1,515
	1500	225/167 (50)	5	2,685	10	1,645	15	1,615	30	1,580
	1600	225/167 (50)	5	2,685	10	1,675	15	1,640	30	1,605
	2000	225/167 (50)	7.5	3,375	10	1,695	30	1,675	30	1,635
	2500	225/167 (50)	10	3,495	15	1,825	30	1,765	45	1,735
	3000	225/167 (50)	10	3,495	15	1,935	30	1,860	45	1,845
	4000	225/167 (50)	10	4,050	15	1,995	30	1,945	45	1,930
	5000	225/167 (50)	15	4,660	20	2,190	30	2,130	45	2,090
	6000	225/167 (50)	15	5,115	20	2,360	30	2,245	45	2,165
	7500	225/167 (50)	15	5,590	20	2,510	30	2,410	45	2,360

Note:

1. Please add INR 120 for 1A secondary current (Before ordering, please check feasibility with local sales office)
2. Please add INR 35 for DIN rail mounting Kit
3. For Class 0.5s CT prices, please contact local sales office



# Protection Current Transformers



## Busbar Type – Rish Xmer

Standard Secondary current: 5A

Group	Primary Current (A)	Type OD/ID (Axial)	Class 5P5		Class 10P5		Class 5P10		Class 10P10	
			VA	LP (INR)	VA	LP (INR)	VA	LP (INR)	VA	LP (INR)
<b>Rish Xmer 86/50 (45)</b>										
XP06	100	86/50 (45)	1.5	740	1.5	670	-	-	-	-
	150	86/50 (45)	1.75	785	1.75	710	-	-	-	-
	200	86/50 (45)	2.5	810	2.5	740	-	-	-	-
	250	86/50 (45)	3.75	850	3.75	785	-	-	-	-
	300	86/50 (45)	3.75	885	3.75	810	1	960	1	885
	400	86/50 (45)	5	920	5	840	1	990	1	920
	500	86/50 (45)	5	960	5	885	1	1,030	1	960
	600	86/50 (45)	5	990	5	920	1	1,065	1	990
	750	86/50 (45)	7.5	1,050	7.5	970	1.5	1,110	1.5	1,030
	800	86/50 (45)	7.5	1,080	7.5	1,010	1.5	1,120	1.5	1,050
<b>Rish Xmer 104/30 (45)</b>										
XP07	50	104/30 (45)	2.5	1,685	2.5	1,620	-	-	-	-
	60	104/30 (45)	2.5	1,705	2.5	1,635	-	-	1.5	1,395
	75	104/30 (45)	2.5	1,725	2.5	1,650	-	-	1.5	1,505
	80	104/30 (45)	2.5	1,730	2.5	1,660	1.5	1,640	1.5	1,540
	100	104/30 (45)	5	1,750	5	1,675	1.5	1,660	2.5	1,725
	125	104/30 (45)	5	1,775	5	1,705	1.5	1,680	2.5	1,740
	150	104/30 (45)	7.5	1,815	7.5	1,740	2.5	1,725	2.5	1,650
	200	104/30 (45)	10	1,870	10	1,805	3.75	1,705	3.75	1,705
	250	104/30 (45)	10	1,935	10	1,860	5	1,850	5	1,785
	300	104/30 (45)	10	1,995	10	1,930	5	1,905	5	1,850
	400	104/30 (45)	15	2,125	15	2,050	5	2,030	5	1,920
	500	104/30 (45)	15	2,250	15	2,175	7.5	2,155	7.5	2,100
	600	104/30 (45)	15	2,370	15	2,295	7.5	2,210	10	2,235
<b>Rish Xmer 104/50 (45)</b>										
XP08	150	104/50 (45)	2.5	1,290	2.5	1,280	-	-	-	-
	200	104/50 (45)	5	1,300	5	1,195	1.5	1,320	1.5	1,250
	250	104/50 (45)	5	1,320	7.5	1,375	2.5	1,365	2.5	1,280
	300	104/50 (45)	7.5	1,500	7.5	1,420	2.5	1,405	2.5	1,325
	400	104/50 (45)	7.5	1,595	7.5	1,520	2.5	1,500	2.5	1,420
	500	104/50 (45)	10	1,685	10	1,620	2.5	1,600	2.5	1,520
	600	104/50 (45)	10	1,780	10	1,710	2.5	1,685	2.5	1,595
	750	104/50 (45)	10	1,920	10	1,850	5	1,840	5	1,760
	800	104/50 (45)	10	1,975	10	1,900	5	1,885	5	1,805
	1000	104/50 (45)	10	2,155	10	2,085	5	2,075	5	1,990



# Protection Current Transformers



## Busbar Type – Rish Xmer

Standard Secondary current: 5A

Group	Primary Current (A)	Type OD/ID (Axial)	Class 5P5		Class 10P5		Class 5P10		Class 10P10	
			VA	LP (INR)	VA	LP (INR)	VA	LP (INR)	VA	LP (INR)
<b>Rish Xmer 104/60 (45)</b>										
XP09	100	104/60 (45)	1.5	1,055	1.5	990	-	-	-	-
	150	104/60 (45)	2.5	1,095	2.5	1,025	1	1,045	1	955
	200	104/60 (45)	3.75	1,135	3.75	1,065	1	1,045	1	960
	250	104/60 (45)	5	1,155	5	1,210	1.5	1,090	1.5	1,010
	300	104/60 (45)	5	1,210	5	1,140	1.75	1,125	1.75	1,050
	400	104/60 (45)	7.5	1,295	7.5	1,230	1.75	1,205	1.75	1,125
	500	104/60 (45)	7.5	1,380	7.5	1,310	1.75	1,250	1.75	1,175
	600	104/60 (45)	7.5	1,455	7.5	1,390	1.75	1,285	1.75	1,210
	750	104/60 (45)	10	1,415	10	1,350	1.75	1,330	1.75	1,255
	800	104/60 (45)	10	1,455	10	1,390	1.75	1,370	1.75	1,290
<b>Rish Xmer 140/60 (45)</b>										
XP10	200	140/60 (45)	7.5	2,500	7.5	2,430	2.5	2,410	2.5	2,335
	250	140/60 (45)	7.5	2,560	7.5	2,490	2.5	2,470	2.5	2,355
	300	140/60 (45)	10	2,620	10	2,550	3.75	2,530	3.75	2,390
	400	140/60 (45)	10	2,745	10	2,675	5	2,655	5	2,555
	500	140/60 (45)	10	2,870	10	2,795	5	2,785	5	2,640
	600	140/60 (45)	12.5	2,995	12.5	2,905	5	2,905	5	2,700
	750	140/60 (45)	12.5	3,185	12.5	3,085	5	3,085	5	2,850
	800	140/60 (45)	12.5	3,240	12.5	3,150	5	3,150	5	2,880
	1000	140/60 (45)	12.5	3,485	12.5	3,420	7.5	3,400	7.5	3,100
	1200	140/60 (45)	12.5	3,740	12.5	3,660	7.5	3,650	7.5	3,355
	1250	140/60 (45)	12.5	3,800	12.5	3,730	7.5	3,705	7.5	3,475
	1500	140/60 (45)	15	4,110	15	4,040	10	4,020	10	3,600
	1600	140/60 (45)	15	4,230	15	4,150	10	4,145	10	3,755
	2000	140/60 (45)	20	4,730	20	4,660	12.5	4,395	12.5	3,875
<b>Rish Xmer 140/80 (45)</b>										
XP11	200	140/80 (45)	5	2,150	5	2,075	2.5	2,245	2.5	2,175
	250	140/80 (45)	5	2,210	5	2,125	2.5	2,290	2.5	2,195
	300	140/80 (45)	7.5	2,250	7.5	2,175	3.75	2,345	3.75	2,235
	400	140/80 (45)	10	2,355	10	2,275	5	2,455	5	2,340
	500	140/80 (45)	10	2,460	10	2,375	5	2,550	5	2,415
	600	140/80 (45)	10	2,560	10	2,480	5	2,640	5	2,455
	750	140/80 (45)	10	2,715	10	2,635	5	2,805	5	2,500
	800	140/80 (45)	10	2,760	10	2,685	5	2,850	5	2,595
	1000	140/80 (45)	10	2,795	10	2,720	5	2,670	5	2,600
	1200	140/80 (45)	10	2,850	10	2,785	5	2,680	5	2,615
	1250	140/80 (45)	10	2,880	10	2,815	5	2,720	5	2,455
	1500	140/80 (45)	15	2,925	15	2,850	7.5	2,945	7.5	2,510
	1600	140/80 (45)	15	2,955	15	2,860	7.5	3,035	7.5	2,635
	2000	140/80 (45)	20	3,100	20	3,010	10	3,385	10	2,850
	2500	140/80 (45)	20	3,290	20	3,120	10	3,815	10	3,290

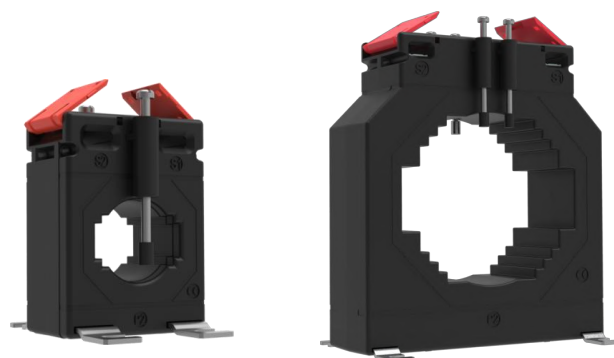
# Protection Current Transformers



## Busbar Type – Rish Xmer

Standard Secondary current: 5A

Group	Primary Current (A)	Type OD/ID (Axial)	Class 5P5		Class 10P5		Class 5P10		Class 10P10	
			VA	LP (INR)	VA	LP (INR)	VA	LP (INR)	VA	LP (INR)
<b>Rish Xmer 140/100 (45)</b>										
XP12	250	140/100 (45)	2.5	1,250	2.5	1,175	-	-	-	-
	300	140/100 (45)	2.5	1,285	2.5	1,210	-	-	-	-
	400	140/100 (45)	3.75	1,365	3.75	1,285	-	-	-	-
	500	140/100 (45)	5	1,425	5	1,365	-	-	-	-
	600	140/100 (45)	5	1,500	5	1,425	1	1,410	1	1,335
	750	140/100 (45)	7.5	1,620	7.5	1,540	1	1,530	1	1,445
	800	140/100 (45)	7.5	1,650	7.5	1,575	1	1,555	1	1,490
	1000	140/100 (45)	10	1,725	10	1,650	1	1,705	1	1,635
	1200	140/100 (45)	10	1,760	10	1,680	1	1,660	1	1,575
	1250	140/100 (45)	10	1,775	10	1,705	1	1,685	1	1,610
	1500	140/100 (45)	10	1,935	10	1,865	1.25	1,850	1.25	1,775
	1600	140/100 (45)	10	2,005	10	1,935	1.25	1,910	1.25	1,845
	2000	140/100 (45)	10	2,265	10	2,205	1.25	2,175	1.25	2,105
	2500	140/100 (45)	10	2,600	10	2,515	1.25	2,505	1.25	2,430
<b>Rish Xmer 225/60 (50)</b>										
XP13	100	225/60 (50)	10	3,045	10	3,145	-	-	-	-
	150	225/60 (50)	10	3,120	15	2,985	5	3,320	-	-
	200	225/60 (50)	10	3,175	15	3,010	7.5	3,385	10	3,310
	250	225/60 (50)	15	3,290	15	3,130	10	3,410	15	3,385
	300	225/60 (50)	15	3,435	15	3,245	10	3,450	15	3,500
	400	225/60 (50)	15	3,390	15	3,230	15	3,460	15	3,305
	500	225/60 (50)	15	3,410	15	3,265	15	3,575	15	3,410
	600	225/60 (50)	15	3,460	15	3,320	15	3,690	15	3,530
	750	225/60 (50)	15	3,530	15	3,390	15	3,875	15	3,700
	800	225/60 (50)	15	3,605	15	3,460	15	3,920	15	3,755
	1000	225/60 (50)	15	3,745	15	3,590	15	4,150	15	3,985
	1200	225/60 (50)	15	3,920	15	3,775	15	4,250	15	4,085
	1250	225/60 (50)	15	3,935	15	3,795	15	4,270	15	4,105
	1500	225/60 (50)	15	4,085	15	3,935	15	4,375	15	4,220
	2000	225/60 (50)	15	4,190	15	4,045	15	4,635	15	4,475



# Protection Current Transformers



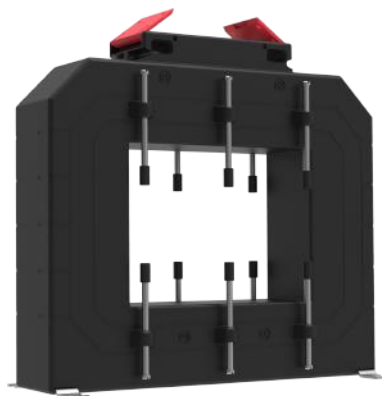
## Busbar Type – Rish Xmer

Standard Secondary current: 5A

Group	Primary Current (A)	Type OD/ID (Axial)	Class 5P5		Class 10P5		Class 5P10		Class 10P10	
			VA	LP (INR)	VA	LP (INR)	VA	LP (INR)	VA	LP (INR)
<b>Rish Xmer 225/125 (50)</b>										
XP14	600	225/125 (50)	5	1,950	5	1,780	-	-	-	-
	750	225/125 (50)	5	2,015	10	2,195	-	-	-	-
	800	225/125 (50)	5	2,035	10	2,210	-	-	-	-
	1000	225/125 (50)	10	2,280	10	2,115	-	-	-	-
	1200	225/125 (50)	10	2,455	15	2,665	1.5	2,640	2.5	2,600
	1250	225/125 (50)	10	2,470	15	2,705	1.5	2,685	2.5	2,615
	1500	225/125 (50)	15	2,635	15	2,455	2.5	2,635	2.5	2,625
	1600	225/125 (50)	15	2,720	15	2,560	2.5	2,635	2.5	2,625
	2000	225/125 (50)	15	2,905	15	2,720	3.75	3,010	5	3,045
	2500	225/125 (50)	15	3,010	15	2,830	5	3,320	7.5	3,385
	3000	225/125 (50)	15	3,190	20	3,245	5	3,475	7.5	3,620
	4000	225/125 (50)	15	3,310	20	3,385	5	3,540	7.5	3,745
5000	225/125 (50)	20	3,540	20	3,320	5	3,720	10	3,890	
<b>Rish Xmer 225/167 (50)</b>										
XP15	1000	225/167 (50)	5	2,470	5	2,250	-	-	-	-
	1200	225/167 (50)	5	2,490	7.5	2,515	1.5	2,705	2.5	2,640
	1250	225/167 (50)	5	2,560	7.5	2,560	1.5	2,740	2.5	2,685
	1500	225/167 (50)	5	2,635	7.5	2,665	2.5	2,790	3.75	2,785
	1600	225/167 (50)	5	2,665	7.5	2,705	2.5	2,835	3.75	2,760
	2000	225/167 (50)	7.5	2,880	12.5	2,925	3.75	3,085	5	3,120
	2500	225/167 (50)	10	2,995	15	3,070	3.75	3,145	7.5	3,100
	3000	225/167 (50)	15	3,100	20	3,210	7.5	3,500	10	3,475
	4000	225/167 (50)	20	3,475	20	3,270	7.5	3,835	12.5	3,835
	5000	225/167 (50)	20	3,690	20	3,450	7.5	3,815	12.5	3,920
	6000	225/167 (50)	20	3,705	20	3,470	7.5	3,840	12.5	3,940

Note :

1. Please add INR 120 for 1A secondary current (Before ordering, please check feasibility with local sales office)
2. Please add INR 35 for DIN rail Mounting Kit
3. For any non-standard item, please contact local sales office



# Metering Current Transformers



## TW e series CT

Standard Secondary current : 5 A

Group	Primary Current (A)	Class 0.5		Class 1	
		VA	LP (INR)	VA	LP (INR)
<b>OD X ID X HT :- 73 X 30 X 50mm</b>					
TE01	50	-	-	-	-
	60	-	-	-	-
	75	-	-	-	-
	100	2.5	600	5	435
	150	5	600	5	435
	200	5	440	5	435
	200	10	600	15	445
<b>OD X ID XHT :- 80 X 30 X 100mm (Without Encapsulation)</b>					
TE02	100	2.5	800	10	645
	100	-	-	15	1,570
	150	5	1,490	15	1,325
<b>OD X ID XHT :- 92 X 43 X 41mm</b>					
TE03	200	5	465	5	435
	200	-	-	10	465
	200	-	-	15	780
	250	5	465	5	435
	250	7.5	660	10	500
	250	-	-	15	780
	300	5	485	5	440
	300	10	685	10	540
	300	-	-	15	685
	400	-	-	5	455
	400	-	-	15	605
	<b>OD X ID XHT :- 95 X 50 X 40mm</b>				
TE04	200	5	560	5	425
	200	-	-	10	470
	200	-	-	15	800
	250	5	515	5	445
	250	7.5	730	10	580
	250	-	-	15	830
	300	5	525	5	500
	300	10	770	10	605
	300	-	-	15	755
<b>OD X ID XHT:- 100 x 58 x 41mm</b>					
TE05	400	5	470	5	440
	400	10	665	15	500
	500	5	470	5	440
	500	10	500	10	470
	500	15	665	15	500
	600	5	470	5	440
	600	10	500	10	500
	600	15	665	15	500

# Metering Current Transformers



## TW e series CT

Standard Secondary current : 5 A

Group	Primary Current (A)	Class 0.5		Class 1	
		VA	LP (INR)	VA	LP (INR)
<b>OD X ID XHT :- 110 x 72 x 41mm</b>					
TE06	800	5	475	5	440
	800	10	495	10	470
	800	15	630	15	475
	1000	5	495	5	455
	1000	15	690	15	540
<b>OD X ID XHT :- 135 x 85 x 30mm</b>					
TE07	800	5	470	5	455
	800	10	505	10	495
	800	15	770	15	605
	1000	5	470	5	440
	1000	15	770	15	605
	1200	-	-	15	665
<b>OD X ID XHT :- 159 x 113 x 40mm</b>					
TE08	1200	15	770	15	605
	1500	15	925	15	770
	1600	15	960	15	800
	2000	15	1,040	15	885
<b>OD X ID XHT :- 165 X 130 X 30mm</b>					
TE09	2400	15	1,150	15	990
	2500	15	1,150	15	990
	3000	15	1,245	15	1,080
<b>OD X ID XHT :- 190 X 150 X 40mm (Without Encapsulation)</b>					
TE10	3200	15	1,490	15	1,335
<b>OD X ID XHT :- 235 X 200 X 35mm (Without Encapsulation)</b>					
TE11	4000	-	-	15	1,815
	5000	-	-	15	2,415
<b>Accessories (Optional) - Wall Mounting Bracket</b>					
Sr. No.	OD/ID (AXIAL)	LP (INR)			
1	73/30 (50)	45			
2	92/43 (41)	50			
3	100/58 (41)	60			
4	110/72 (41)	60			
5	159/113 (40)	65			

Notes :

1. Please add INR 120 for 1A secondary current (Before ordering, please check feasibility with local sales office)
2. Please add INR 35 for Busbar Mounting Kit
3. For any non-standard item, please contact local sales office



Rishabh Instruments Pvt. Ltd.

\$ For productwise approbations, please contact local sales office

# Protection Current Transformers



## TW e series (without encapsulation)

Standard Secondary current: 5A

Group	Primary Current (A)	Type OD/ID (Axial)	Class 5P10	
			VA	LP (INR)
<b>Protection Class CT (Rish TW-E Series)</b>				
XP01	100	140 / 30 (140)	15	6,905
	150	140 / 30 (100)	15	4,230
	200	140 / 50 (100)	15	3,575
	250	140 / 50 (90)	15	3,575
	400	140 / 60 (80)	15	2,075
	600	140 / 60 (60)	15	1,950
	800	140 / 80 (80)	15	1,980
	1000	160 / 105 (70)	15	2,045
	1200	160 / 105 (70)	15	2,075
	1250	160 / 105 (70)	15	2,075
	1600	180 / 115 (50)	15	2,135
	2000	185 / 130 (50)	15	2,175

Note :-

1. Please add INR 120 for 1A secondary current (Before ordering, please check feasibility with local sales office)
2. For any non-standard item, please contact local sales office



# Metering Current Transformers



## TW series CT

Standard Secondary current : 5 A

Group	Primary Current (A)	Class 0.2		Class 0.5S		Class 0.5		Class 1	
		VA	LP (INR)	VA	LP (INR)	VA	LP (INR)	VA	LP (INR)
<b>TW-1 : OD X ID X HT:- 73 X 30 X 40mm</b>									
TW01	50	-	-	-	-	-	-	1.5	400
	60	-	-	-	-	-	-	1.5	400
	75	-	-	-	-	-	-	1.5	400
	80	-	-	-	-	-	-	1.5	400
	100	-	-	-	-	1.5	445	2.5	400
	120	-	-	-	-	1.5	445	2.5	430
	125	-	-	-	-	2.5	470	3.75	445
	150	-	-	-	-	2.5	480	5	470
	200	-	-	-	-	5	500	10	470
<b>TW-2 : OD X ID X HT:- 73 X 30 X 50mm</b>									
TW02	50	-	-	-	-	-	-	1.5	485
	60	-	-	-	-	-	-	1.5	500
	75	-	-	-	-	1.5	520	2.5	500
	80	-	-	-	-	1.5	520	2.5	500
	100	-	-	-	-	2.5	540	5	515
	120	-	-	-	-	2.5	540	5	520
	125	-	-	-	-	2.5	540	5	520
	150	-	-	2.5	555	5	540	10	540
	200	2.5	600	5	570	10	555	15	555
<b>TW-3 : OD X ID X HT:- 92 X 43 X 41mm</b>									
TW03	75	-	-	-	-	-	-	1	555
	80	-	-	-	-	-	-	1.5	560
	100	-	-	-	-	1	565	2.5	570
	120	-	-	-	-	1	565	2.5	580
	125	-	-	-	-	1	565	2.5	580
	150	-	-	-	-	1.5	580	3.75	580
	200	1.5	690	5	650	5	585	10	580
	250	2.5	705	7.5	670	7.5	590	15	580
	300	3.75	720	10	670	10	595	20	580
<b>TW-4 : ODX ID X HT:- 100 X 58 X 41mm</b>									
TW04	120	-	-	-	-	-	-	1	515
	125	-	-	-	-	-	-	1.5	515
	150	-	-	-	-	1	520	2.5	515
	200	-	-	1.5	550	2.5	520	5	515
	250	-	-	2.5	570	3.75	550	7.5	550
	300	-	-	3.75	590	5	560	10	550
	400	5	635	7.5	570	10	515	20	550
	500	7.5	660	10	585	15	550	25	550
	600	10	680	15	595	15	565	25	565

# Metering Current Transformers



## TW series CT

Standard Secondary current : 5 A

Group	Primary Current (A)	Class 0.2		Class 0.5S		Class 0.5		Class 1	
		VA	LP (INR)	VA	LP (INR)	VA	LP (INR)	VA	LP (INR)
<b>TW-5 : OD X ID X HT:- 110 X 72 X 41mm</b>									
TW05	200	-	-	-	-	-	-	1.5	550
	250	-	-	-	-	1.5	580	2.5	580
	300	-	-	-	-	2.5	600	5	600
	400	2.5	670	5	645	7.5	625	12.5	625
	500	3.75	700	7.5	670	10	660	15	660
	600	5	715	7.5	690	10	675	15	675
	800	10	730	15	710	15	690	30	690
	1000	10	745	15	730	15	720	30	720
<b>TW-6 : OD X ID X HT:- 159 X 113 X 40mm</b>									
TW06	600	1.5	820	3.75	805	5	790	10	790
	800	2.5	830	7.5	820	10	805	15	805
	1000	3.75	855	7.5	830	10	820	15	820
	1200	15	895	15	880	20	870	30	870
	1250	15	920	15	915	20	910	30	910
	1500	15	950	15	950	20	945	30	945
	1600	15	990	15	985	20	975	30	975
	2000	15	1,035	20	1,010	25	1,000	45	1,000
	2500	15	1,090	20	1,085	25	1,080	45	1,075
	3000	15	1,175	25	1,165	30	1,155	45	1,140
	3200	15	1,255	25	1,215	30	1,210	45	1,195

Sr. No.	Accessories (Optional) - Wall Mounting Bracket	OD/ID (AXIAL)	LP (INR)
1	TW-2	73/30 (50)	45
2	TW-3	92/43 (41)	50
3	TW-4	100/58 (41)	60
4	TW-5	110/72 (41)	60
5	TW-6	159/113 (40)	65

Note :-

1. Please add INR 120 for 1A secondary current (Before ordering, please check feasibility with local sales office)
2. For any non-standard item, please contact local sales office





# Metering Current Transformers



## Summation CT

Standard Secondary current: 5A

Group	Type	Primary Current (A)	Class 0.5		Class 1	
			VA	LP (INR)	VA	LP (INR)
XU01	Rish Xmer Sigma 75	5+5	5	1,445	5	1,295
			10	1,455	10	1,315
			15	1,485	15	1,340
			-	-	20	1,455
			-	-	25	1,485
			5	1,530	5	1,315
	Rish Xmer Sigma 150	5+5+5	10	1,545	10	1,335
			15	1,575	15	1,365
			-	-	20	1,545
			-	-	25	1,575
			5	1,585	5	1,325
			10	1,610	10	1,340
XU01	Rish Xmer Sigma 75	5+5+5+5	15	1,620	15	1,365
			-	-	20	1,605
			-	-	25	1,620
			5	1,665	5	1,435
			10	1,685	10	1,455
			15	1,730	15	1,480
	Rish Xmer Sigma 150	5+5+5+5+5	-	-	20	1,685
			-	-	25	1,730
			5	1,735	5	1,465
			10	1,760	10	1,485
			15	1,780	15	1,500
			-	-	20	1,760
XU01	Rish Xmer Sigma 75	5+5+5+5+5+5	-	-	25	1,780
			5	1,760	5	1,515
			10	1,780	10	1,540
			15	1,805	15	1,560
			-	-	20	1,780
			-	-	25	1,805
	Rish Xmer Sigma 150	5+5+5+5+5+5+5	5	1,825	5	1,600
			10	1,865	10	1,635
			15	1,905	15	1,655
			-	-	20	1,855
			-	-	25	1,905
			5	1,825	5	1,600

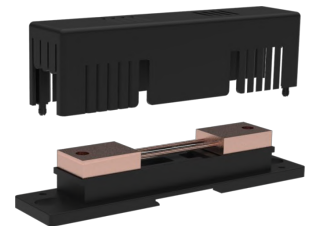
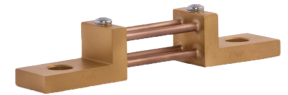


Rishabh Instruments Pvt. Ltd.

\$ For productwise approbations, please contact local sales office

## Accuracy Class 0.5

Group	Current Rating (A)	LP (INR)		
		50/60/75mV	100mV	150mV
	1	255	385	440
	5	255	415	440
	10	255	415	440
	15	255	465	495
	20	255	465	495
	25	300	465	495
	30	300	480	520
	40	300	480	535
	50	300	480	605
	60	300	515	760
	75	300	545	875
	100	380	650	1,025
	125	470	835	1,080
	150	470	835	1,255
	175	825	1,040	1,480
	200	840	1,120	1,595
	250	925	1,255	1,840
YN01	300	1,200	1,450	2,145
	400	1,320	1,790	2,470
	500	1,375	1,925	2,750
	600	1,455	2,155	3,120
	750	1,620	2,260	3,725
	800	2,305	3,365	5,100
	1000	3,535	4,130	7,125
	1200	3,835	4,485	9,270
	1250	4,855	5,645	9,975
	1500	5,585	6,205	10,990
	2000	5,870	7,640	16,280
	2500	6,345	9,045	17,310
	3000	6,945	11,700	19,590
	4000	9,880	17,620	25,230
	5000	15,685	21,520	31,130
	6000	25,200	27,470	40,295
	7500	30,525	37,565	50,860
	10000	59,685	75,825	81,375
	15000	1,01,900	1,11,710	1,22,370



Note :

1. For 0.2 CI Shunt (upto 2500A), multiply the standard price by 1.3
2. For any non-standard item, please contact local sales office
3. "Insulating Base" will be supplied with shunts 1 to 30A shunt ratings only

**Rishabh Instruments Pvt. Ltd.**

**\$ For productwise approbations, please contact local sales office**

---

## Terms and conditions

- This issue of Price List supersedes all previous Price Lists
- All Prices are in INR
- The prices are subject to change without prior notice
- List Prices mentioned are exclusive of all taxes & duties
- Prices charged will be as prevailing on the date of dispatch
- Minimum order value criterion should be observed while ordering
- The company reserves the right to supply goods at its discretion
- For any non-standard requirement, please contact nearest sales office regarding technical feasibility, price & delivery

## Warranty

- All the products listed in the Price List carry a warranty of 18 months against manufacturing defects (unless otherwise specified) from the date of purchase or 12 months from the date of commissioning, whichever is earlier

## Note

- To facilitate the ordering kindly make use of product configurator
- Kindly refer respective datasheets for detailed technical specifications. Technical specs given in this price list are in abbreviated form only for easy understanding. Selection of products must be done from the datasheets.
- Since the product approbations mentioned in the price list are on generic header level, kindly contact to our nearest sales office for product-wise approbations
- For any enquiry regarding Energy Measurement Software and Solar Inverters, kindly contact our sales office.



RISHABH

Rev : LP / 2122 / AE / 01

Product up-gradation is a continuous process. Hence data in this price list is subject to change without prior notice. For the latest information, please get in touch with our sales offices



Measure



Control



Record



Analyze

**RISHABH INSTRUMENTS PVT. LTD.**

+91 253 2202028/99 | [marketing@rishabh.co.in](mailto:marketing@rishabh.co.in) | [www.rishabh.co.in](http://www.rishabh.co.in)