



SWITCH GEAR

All Type of Industrial Switch Gear

PRICE LIST Effective Date : 01-04-2022



*A Quality
Products...*



ISO 9001:2008 Certified Company



About Us...

Shree Industries is a reputed company engaged in manufacturing and exporting a wide Industrial Electric Switch Products in Shree Brand. Our wide product range includes Reverse Forwarding Switch, Metal Plug and Socket, Limit Control Switch, Rotary Switch, Main Switch, Change Over, Bus Bar Chamber, Socket and MCB Distribution Board etc. We assure our worldwide clients of premium quality goods and value added after sales services at competitive prices

Client Satisfaction

Being a client-centric organization all our endeavors are directed towards achieving highest level of customer satisfaction. Further, our commitment, time-lined delivery, and competitive prices have helped us in gaining the trust and confidence of the clients. We also conduct various checks and tests to ensure delivery of defect free products. In addition, our expertise enables us to deliver custom designed products, manufactured in compliance with clients' specifications.

Why Us?

Following are some of the aspects that have helped us in keeping ourselves ahead of our competitors and preferred business associates of our clients :

- High quality and innovative designs.
- Customized products to suit the requirements of our clients.
- Excellent Customer Service.
- Huge infrastructure, state-of-the-art technology, latest machinery and well qualified team of engineers.
- Prompt delivery.
- Competitive prices.
- Ethical Business practices.





HSN CODE - 85365010

Specifications :

- 16G Metal Body.
- EC Grade Copper Contacts.
- P.F Moulding Bakelite Block. (Dielectric strength : 55 kV/mm)
- Electric Proof Coating.
- Electric Proof 70mm Long Steel Handle.
- Dust Proof Top Cover.



HSN CODE - 85365010

Specifications :

- SIEMENS Type Model.
- P.F Moulding Bakelite Block (Dielectric Strength : 55 kV/mm)
- Shock Proof Coating.
- Unbreakable Handle.
- 360 Rotating Handle.
- Silver Point Metal Contacts.

SHREE L.T. Control Reverse Forward Switch

AMPS.	Poles	Volts	Price Rs.	Pkg.
16 ON/OFF	3	440	460/-	40
16 R/F	3	440	460/-	40
32 ON/OFF	3	440	520/-	40
32 R/F	3	440	520/-	40

L.T. Control Reverse Forward Switch SIEMENS Type

AMPS.	Poles	Volts	Price Rs.	Pkg.
32 ON/OFF	3	440	920/-	30
32 R/F	3	440	1090/-	30
32 Change Over	2	440	1000/-	30
32 Change Over	3	440	1180/-	30



HSN CODE - 90322090

Specifications :

- New Plastic Body Design.
- Silver Point Metal Contact.
- Connection Bakelite.
- Pressure Adjustable.
- Difference Adjustable.



HSN CODE - 85365010

Specifications :

- Nylon-6 Glass Field Material.
- EC Grade Copper Rivet.
- Dust Proof Body.
- Easy To Connect & Durable.

Compressor Auto Pressure Switch

Item	Amps.	Poles	Price Rs.	Pkg.
PR - 15 & 9	6	3	920/-	30
PRV - 15 & 9	6	3	1090/-	30
PR - 15X & 9X	6	3	1050/-	30
PRV - 15X & 9X	6	3	1160/-	30

Bench Grinder Rotary Switch

AMPS.	Poles	Volts	Price Rs.	Pkg.
16 Square	2	250	170/-	100
16 Square	3	440	180/-	100
10 Round	3	440	180/-	100





Industrial Switch Gear

ISO 9001:2008 CERTIFIED COMPANY

Effective Date : 01-04-2022



HSN CODE - 85365010

Specifications :

- Brass Pins.
- EC Grade Copper Contacts.
- P.F Moulding Bakelite Pin Block. (Dielectric Strength : 55 kV/mm)
- LM6 Grade Aluminum Body.
- Electric Proof Coating.
- Easy For Connection & Mounting.
- Safety Covers & Metal Chain.

Metal Clad Plug & Socket

Amps.	Product	Volts	Price Rs.	Pkg.
20 Amp. x 2 Pole	Plug	250	120/-	120
20 Amp. x 2 Pole	Socket	250	130/-	120
20 Amp. x 3 Pole	Plug	440	150/-	120
20 Amp. x 3 Pole	Socket	440	160/-	120
30 Amp. x 3 Pole	Plug	440	310/-	60
30 Amp. x 3 Pole	Socket	440	310/-	60



HSN CODE - 85365010

Specifications :

- Weather-Proof Plug & Socket.
- Plastic Material.
- IP44 Rating
- Brass Pins
- Safety Covers
- Easy For Connection & Use

Weather-Proof Plug & Socket (IP44)16 AMP

Way	Way	Volts	Price	Pkg.
Plug	16Amp. x 3Pin	250V	70/-	150
Straight Socket	16Amp. x 3Pin	250V	80/-	150
Panel Socket	16Amp. x 3Pin	250V	84/-	200
Wall Socket	16Amp. x 3Pin	250V	100/-	100
Plug	16Amp. x 5Pin	440V	150/-	100
Straight Socket	16Amp. x 5Pin	440V	160/-	100
Panel Socket	16Amp. x 5Pin	440V	160/-	100
Wall Socket	16Amp. x 5Pin	440V	150/-	100
Multi-Socket	16Amp. x 3Pin	250V	490/-	20



HSN CODE - 85365010

Specifications :

- Aluminium Body & Metal Cover.
- Shock Proof Coating.
- Silver Point Contact.
- Nylon Material Base Roller.
- Easy For Connection & Durable.

Mini-Limit Switch :

- Silver Point Contact.
- S.S Material Base Roller.

Limit Control Switch (Silver Copper Rivet)

Item	Amps.	Volts.	Price Rs.	Element Price Rs.	Pkg.
LSR Normal Action	10	500	340/-	140/-	100
LSRS Snap Action	10	500	370/-	170/-	100

Mini-Limit Control Switch (Silver Copper Rivet)

MLSR Normal Action	10	500	380/-	160/-	100
MLSRS Snap Action	10	500	410/-	190/-	100



HSN CODE - 85365010

Specifications :

- Weather-Proof Plug & Socket.
- Plastic Material.
- IP44 Rating
- Brass Pins
- Safety Covers
- Easy For Connection & Use

Weather-Proof Plug & Socket (IP44)32 AMP

Way	Way	Volts	Price	Pkg.
Plug	32Amp. x 5Pin	440V	170/-	100
Straight Socket	32Amp. x 5Pin	440V	175/-	100
Panel Socket	32Amp. x 5Pin	440V	170/-	100
Wall Socket	32Amp. x 5Pin	440V	190/-	100
Plug	32Amp. x 3Pin	250V	150/-	100
Straight Socket	32Amp. x 3Pin	250V	160/-	100
Panel Socket	32Amp. x 3Pin	250V	160/-	100
Wall Socket	32Amp. x 3Pin	250V	150/-	100
Multi-Socket	32Amp. x 5Pin	440V	1560/-	100



Industrial Switch Gear

ISO 9001:2008 CERTIFIED COMPANY

Effective Date : 01-04-2022



HSN CODE - 85365010

Three Phase MCTP Main Switch

AMPS.	Poles	Volts	Price Rs.	Pkg.
16	3	415	1400/-	8
32	2	250	1680/-	8
32	3	415	1930/-	6
63	3	415	3400/-	4
100	3	415	7600/-	2
200	3	415	12900/-	1

Three Phase ICTP Main Switch

16	3	415	1600/-	8
32	3	415	2150/-	6
63	3	415	3800/-	4

Specifications :

- Heavy Thick. Sheet Metal Body.
- Nickel Plated Brass Connection Contacts.
- EC Grade Copper Top Contacts.
- Metal Handle.
- Easy For Connection & Operate.
- Loose Spares Available.



HSN CODE - 85365010

Specifications :

- Shock Proof Coating Body.
- EC Grade Copper Flats For Connection.
- Porcelain Ceramic Stand.
- Holes Details :
9"x12"x3" : 3 Connection
12"x15"x4" : 7 Connection
15"x18"x6" : 8 Connection
18"x24"x6" : 13 Connection
- Easy For Connection.
- Very Durable.



Bus Bar Chamber (9" x 12" x 3")

Item	Poles	Price Rs.	Pkg.
63AMP Copper	4	1750/-	6

Bus Bar Chamber (12" x 15" x 4")

Item	Poles	Price Rs.	Pkg.
63AMP Copper	4	2250/-	4
100AMP Copper	4	2570/-	4
200AMP Copper	4	3150/-	4

Bus Bar Chamber (15" x 18" x 6")

Item	Poles	Price Rs.	Pkg.
100AMP Copper	4	3680/-	3
200AMP Copper	4	4420/-	3
300AMP Copper	4	5950/-	3
400AMP Copper	4	7120/-	3

Bus Bar Chamber (18" x 24" x 6")

Item	Poles	Price Rs.	Pkg.
200AMP Copper	4	7350/-	2
300AMP Copper	4	8730/-	2
400AMP Copper	4	10300/-	2

Bus Bar Chamber (Only Box)

Item	Poles	Price Rs.	Pkg.
12" x 15" x 4"	4	1600/-	4
15" x 18" x 6"	4	2520/-	3
18" x 24" x 6"	4	3990/-	1



HSN CODE - 85365010

Change Over Switch (Sheet Metal)

AMPS.	Poles	Volts	Price Rs.	Pkg.
16	2	250	1260/-	8
16	4	415	1790/-	6
32	2	250	1920/-	6
32	4	415	2320/-	6
63	4	415	5180/-	4
100	4	415	8640/-	2
200	4	415	15250/-	1

Specifications :

- Heavy Thick. Sheet Metal Body.
- Nickel Plated Brass Connection Contacts.
- EC Grade Copper Top Contacts.
- PB Bronze Copper Bottom Contacts.
- Metal Handle.
- Easy For Connection & Operate.
- Loose Spares Available.



Specifications :

- "WHITE" Porcelain Ceramic Body.
- Nickel Plated Brass Connection Contacts.
- EC Grade Top Copper Contacts.
- PB Bronze Bottom Clamps.
- Connection S.S Screws.
- Easy For Connection & Durable.

HSN CODE - 85365010



"SHREE" Porcelain Kit Kat Fuse (K-Type)

TYPE	AMPS.	Volts	Price Rs.	Pkg.
K-Type	16	415	100/-	72
K-Type	32	415	160/-	60
K-Type	63	415	290/-	36



Specifications :

- "CREAM" Porcelain Ceramic Body.
- Nickel Plated Brass Connection Contacts.
- EC Grade Top Copper Contacts.
- Nickel Plated Brass Bottom Clamps.
- Nickel Plated Connection M.S. Screws.
- Easy For Connection & Durable.

HSN CODE - 85365010



"SECO" Porcelain Kit Kat Fuse

TYPE	AMPS.	Volts	Price Rs.	Pkg.
K-Type	16	415	90/-	72
K-Type	32	415	120/-	60
K-Type	63	415	220/-	36



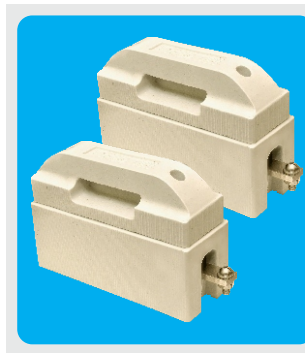
Specifications :

- "WHITE" Porcelain Ceramic Body.
- Nickel Plated Brass Connection Contacts.
- EC Grade Top Copper Contacts.
- PB Bronze Bottom Clamps.
- Connection S.S Screws.
- Lug : Screw & Washer S.S.
- Easy For Connection & Durable.

HSN CODE - 85365010

"SHREE" Porcelain Kit Kat Fuse (New Handle Type) Copper + PB

TYPE	AMPS.	Volts	Price Rs.	Pkg.
Handle Type	63	415	410/-	24
Handle with Lug	63	415	480/-	24
Handle Type	100	415	620/-	12
Handle with Lug	100	415	690/-	12
Handle Type	200	415	1150/-	9
Handle with Lug	200	415	1250/-	9
Handle (T-Type)	200	415	1320/-	1



Specifications :

- "CREAM" Porcelain Ceramic Body.
- Nickel Plated Brass Connection Contacts.
- EC Grade Top Copper Contacts.
- Nickel Plated Brass Bottom Clamps.
- Nickel Plated Connection M.S. Screws.
- Lug : Screw & Washer M.S. (With Zinc)
- Easy For Connection &

HSN CODE - 85365010

"SECO" Porcelain Kit Kat Fuse (Handle Type) Copper + Brass

TYPE	AMPS.	Volts	Price Rs.	Pkg.
Handle Type	63	415	240/-	30
Handle with Lug	63	415	280/-	30
Handle Type	100	415	500/-	12
Handle with Lug	100	415	560/-	12
Handle Type	200	415	950/-	9
Handle with Lug	200	415	1070/-	9
Handle with Lug	500	415	1590/-	1



Industrial Switch Gear

ISO 9001:2008 CERTIFIED COMPANY

Effective Date : 01-04-2022



Specifications :

- 22G Thick Metal Body.
- Shock Proof Coating.
- 1½ & ¾Way Are Small Size Boards.
- 4 to 16Way are Big Size Boards.
- Without Neutral Busbar Link.
- Easy For Connection & Durable.

HSN CODE - 85371000

Metal Enclosure MCB Distribution Board Without Neutral Busbar & Phase Link

Way	Volts	Price Rs.	Pkg.
1 / 2	250	130/-	100
3 / 4	250	160/-	70
4	250	220/-	50
6	250	260/-	40
8	250	320/-	40
10	250	370/-	24
12	250	420/-	24
16	250	520/-	20



Specifications :

- 22G Thick Metal Body.
- 4 to 16Way are Big Size Boards.
- Shock Proof Coating.
- With Neutral Busbar Link.
- Easy For Connection & Durable.

HSN CODE - 85371000

Metal Enclosure MCB Distribution Board With Neutral Busbar & Dummy Plate **DELUXE**

Way	Volts	Price Rs.	Pkg.
4	250	260/-	50
6	250	330/-	40
8	250	390/-	40
10	250	450/-	24
12	250	510/-	24
16	250	640/-	20



Specifications :

- 20G Thick Metal Body.
- Shock Proof Coating.
- 4 to 16Way are Big Size Boards.
- Topside Plate Removable.
- MCB Channel Removable.
- With Neutral Busbar Link.
- With Copper Face Link.
- Easy For Connection & Durable.

HSN CODE - 85371000

Metal MCB Distribution Board (Single Door - SPN) PREMIUM With Neutral Busbar, Phase Link & Dummy Plate

Way	Volts	Price Rs.	Pkg.
4	250	440/-	50
6	250	510/-	40
8	250	560/-	40
10	250	630/-	24
12	250	720/-	24
16	250	860/-	20



Specifications :

- 20G Thick Metal Body.
- Shock Proof Coating.
- Topside Plate Removable.
- MCB Channel Removable.
- With Neutral Busbar & Copper Face Link.
- For safety Top Cover is Extra Packed.
- Dust Guard Includes.

HSN CODE - 85371000

Metal MCB Distribution Board (Double Door - SPN) PREMIUM With Neutral Busbar, Phase Link & Dummy Plate

Way	Volts	Price Rs.	Pkg.
4	250	690/-	20
6	250	820/-	20
8	250	930/-	20
10	250	1050/-	14
12	250	1180/-	14
16	250	1420/-	10
20	250	1650/-	10



Industrial Switch Gear

ISO 9001:2008 CERTIFIED COMPANY

Effective Date : 01-04-2022



Specifications :

- 20G Thick Metal Body.
- Shock Proof Coating.
- Topside Plate Removable.
- MCB Channel Removable.
- With Neutral Busbar & Copper Face Link.

HSN CODE - 85371000

Metal MCB Distribution Board (Single Door - TPN) PREMIUM

With Neutral Busbar, Phase Link & Dummy Plate

Way	Pole	Volts	Price Rs.	Pkg.
4	16	440	1350/-	6
6	24	440	1770/-	6
8	32	440	2190/-	4
12	48	440	3060/-	4



Specifications :

- 20G Thick Metal Body.
- Shock Proof Coating.
- Topside Plate Removable.
- MCB Channel Removable.
- With Neutral Busbar & Copper Face Link.
- Earthing Busbar Link.
- For safety Top Cover is Extra Packed.
- Dust Guard Includes.

HSN CODE - 85371000

Metal MCB Distribution Board (Double Door - TPN) PREMIUM

With Neutral Busbar, Phase Link & Dummy Plate

Way	Pole	Volts	Price Rs.	Pkg.
4	16	440	2270/-	4
6	24	440	2840/-	4
8	32	440	3400/-	3
12	48	440	4540/-	3



Specifications :

- 22G Thick Metal Body.
 - Shock Proof Coating.
 - With Neutral Busbar Link.
- PremiumRange.**
- 20G Thick Metal Body.
 - With Neutral Busbar & Phase Link.

HSN CODE - 85371000

Modular MCB Distribution Board (Double Door - SPN)

With Neutral Busbar

Way	Volts	Price Rs.	Pkg.
1 / 2 (Small)	250	55/-	200
3 / 4 (Small)	250	80/-	150
2 / 4	250	320/-	54
6 / 8	250	450/-	36
10 / 14	250	610/-	22
16 / 18	250	750/-	18



Specifications :

- 22G Metal Body.
- Shock Proof Coating.
- Customizable as Per Your Requirement.

HSN CODE - 85371000



Metal Junction Board

Size	Price Rs.	Pkg.
4 x 4 x 2.5 Inch	160/-	100
6 x 6 x 2.5 Inch	240/-	50
8 x 8 x 2.5 Inch	330/-	40
10 x 10 x 2.5 Inch	460/-	30
12 x 12 x 2.5 Inch	590/-	20



Industrial Switch Gear

ISO 9001:2008 CERTIFIED COMPANY

Effective Date : 01-04-2022



HSN CODE - 85371000

Specifications :

- Available 1 Socket & 1 MCB Fitting Point.
- 22G Thick Metal Body.
- Shock Proof Coating.
- Customizable As per Your Requirement.



A.C. Box

Size	Rating	Price Rs.	Pkg.
A.C. BOX	Only Box - SP/DP	270/-	50
A.C. BOX	With Plug-Socket 20/2	540/-	50



HSN CODE - 85371000

1 Socket + 1 MCB Industrial Distribution Board

Size	Amp.	Pole	MCB	Price Rs.	Pkg.
1 + 1	20 amp.	2 Pole	DP-MCB	340/-	30
1 + 1	20 amp.	3 Pole	TPN-MCB	340/-	30
1 + 1	30 amp.	3 Pole	TPN-MCB	340/-	30



HSN CODE - 85371000

2 Socket + 1 MCB Industrial Distribution Board

Size	Amp.	Pole	MCB	Price Rs.	Pkg.
2 + 1	20 amp.	2 Pole	DP-MCB	550/-	20
2 + 1	20 amp.	3 Pole	TPN-MCB	550/-	20
2 + 1	30 amp.	3 Pole	TPN-MCB	550/-	20



HSN CODE - 85371000

2 Socket + 2 MCB Industrial Distribution Board

Size	Amp.	Pole	MCB	Price Rs.	Pkg.
2 + 2	20 amp.	2 Pole	DP-MCB	550/-	25
2 + 2	20 amp.	3 Pole	TPN-MCB	550/-	25
2 + 2	30 amp.	3 Pole	TPN-MCB	550/-	25



HSN CODE - 85371000

3 Socket + 1 MCB Industrial Distribution Board

Size	Amp.	Pole	MCB	Price Rs.	Pkg.
3 + 1	20 amp.	2 Pole	DP-MCB	580/-	20
3 + 1	20 amp.	3 Pole	TPN-MCB	580/-	20
3 + 1	30 amp.	3 Pole	TPN-MCB	580/-	20



HSN CODE - 85371000

3 Socket + 3 MCB Industrial Distribution Board

Size	Amp.	Pole	MCB	Price Rs.	Pkg.
3 + 3	20 amp.	2 Pole	DP-MCB	780/-	20
3 + 3	20 amp.	3 Pole	TPN-MCB	780/-	20
3 + 3	30 amp.	3 Pole	TPN-MCB	780/-	20



HSN CODE - 85371000

4 Socket + 1 MCB Industrial Distribution Board

Size	Amp.	Pole	MCB	Price Rs.	Pkg.
4 + 1	20 amp.	2 Pole	DP-MCB	810/-	20
4 + 1	20 amp.	3 Pole	TPN-MCB	810/-	20
4 + 1	30 amp.	3 Pole	TPN-MCB	810/-	20



HSN CODE - 85371000

4 Socket + 2 MCB Industrial Distribution Board

Size	Amp.	Pole	MCB	Price Rs.	Pkg.
4 + 2	20 amp.	2 Pole	DP-MCB	1020/-	16
4 + 2	20 amp.	3 Pole	TPN-MCB	1020/-	16
4 + 2	30 amp.	3 Pole	TPN-MCB	1020/-	16





HSN CODE - 85371000

4 Socket + 4 MCB Industrial Distribution Board

Size	Amp.	Pole	MCB	Price Rs.	Pkg.
4 + 4	20 amp.	2 Pole	DP-MCB	1020/-	16
4 + 4	20 amp.	3 Pole	TPN-MCB	1020/-	16
4 + 4	30 amp.	3 Pole	TPN-MCB	1020/-	16



HSN CODE - 85371000

6 Socket + 1 MCB Industrial Distribution Board

Size	Amp.	Pole	MCB	Price Rs.	Pkg.
6 + 1	20 amp.	2 Pole	DP-MCB	1080/-	16
6 + 1	20 amp.	3 Pole	TPN-MCB	1080/-	16
6 + 1	30 amp.	3 Pole	TPN-MCB	1080/-	16



HSN CODE - 85371000

Specifications :

- 20G Thick Metal Body.
- Shock Proof Coating.
- Top Mounting.
- Metal Socket Stand Holes are Given.

Industrial Socket Distribution Board Top Mounting

Size	Rating	Rating	Rating	Price Rs.	Pkg.
1 Way Socket	20 amp. 2 Pole	20 amp. 3 Pole	30 amp. 3 Pole	100/-	50
2 Way Socket	20 amp. 2 Pole	20 amp. 3 Pole	30 amp. 3 Pole	170/-	30
3 Way Socket	20 amp. 2 Pole	20 amp. 3 Pole	30 amp. 3 Pole	320/-	20
4 Way Socket	20 amp. 2 Pole	20 amp. 3 Pole	30 amp. 3 Pole	450/-	15

TERMS & CONDITIONS :

1. This Price List Supersedes all our Previous Price List.
2. Price are subject to change without prior notice.
3. Disputes if any, are Subject to Rajkot Jurisdiction only.
4. All Prices are ex-godown & all the freight charges has to bear by the dealers.
5. Claims if any, has to be settled by purchaser direct with the carriers. The Company will not be responsible for any kind of shortage, damage or loss caused in the transit.
6. Company reserve the rights to issue amendment, which may arise due to any errors in the price list.
7. Company reserve the rights to excute the order full or in part.
8. All the taxes such as Central, State or Local, Which if levied, shall be charged extra at actual.

Discount %

Payment Day



ISO 9001:2008 Certified Company



Mfg. By :

Dealer / Distri. :

Shree Industries

Office : 24/30-Samrat Industrial Area, B/h. S.T. Workshop,
Ambedkar Chowk, Gondal Road, Rajkot-4. (Guj.).

Factory : Sardar Industrial Area, Plot No. 33,
B/h. Kothariya Solvent Railway Crossing, Gondal Road,
Kothariya, Rajkot. (Gujarat) India.

E-mail : shreenileshpatel@yahoo.in | **Website** : www.shree-industries.co.in