

PRICE LIST - MARCH 2021

PLUG AND SOCKET IP44 WITH CE MARK

S.NO	PRODUCT DESCRIPTION	MODEL	CTN PACKING
1	16A 2PIN PLUG WHITE	SE-P012	200 PCS
2	16A 2PIN PLUG BLUE	SE-P012	100 PCS
3	16A 2PIN BOX TYPE SOCKET	SE-S112	150 PCS
4	16A 2PIN PANEL TYPE SOCKET	SE-S312	200 PCS
5	16A 2PIN STRAIGHT SOCKET	SE-S212	100 PCS
6	16A 3PIN PLUG	SE-P013	120 PCS
7	16A 3PIN BOX TYPE SOCKET	SE-S113	60 PCS
8	16A 3PIN STRAIGHT SOCKET	SE-S213	120 PCS
9	16A 3PIN PANEL SOCKET W/O BODY	SE-S313	120 PCS
10	16A 4PIN PLUG	SE-P014	100 PCS
11	16A 4PIN BOX TYPE SOCKET	SE-S114	60 PCS
12	16A 4PIN STRAIGHT SOCKET	SE-S214	100 PCS
13	16A 5PIN PLUG	SE-P015	60 PCS
14	16A 5PIN BOX TYPE SOCKET	SE-S115	60 PCS
15	16A 5PIN STRAIGHT SOCKET	SE-S215	60 PCS
16	32A 3PIN PLUG	SE-P023	60 PCS
17	32A 3PIN BOX TYPE SOCKET	SE-S123	60 PCS
18	32A 3PIN STRAIGHT SOCKET	SE-S223	60 PCS
19	32A 4PIN PLUG	SE-P024	60 PCS
20	32A 4PIN BOX TYPE SOCKET	SE-S124	60 PCS
21	32A 4PIN STRAIGHT SOCKET	SE-S224	60 PCS
22	32A 5PIN PLUG	SE-P025	60 PCS
23	32A 5PIN BOX TYPE SOCKET	SE-S125	60 PCS
24	32A 5PIN STRAIGHT SOCKET	SE-S225	60 PCS
25	32A 5PIN PANEL SOCKET W/O BODY	SE-S325	60 PCS
26	63A 3PIN PLUG	SE-P033	10 PCS
27	63A 3PIN BOX TYPE SOCKET	SE-S133	10 PCS
28	63A 3PIN STRAIGHT SOCKET	SE-S233	10 PCS
29	63A 4PIN PLUG	SE-P034	10 PCS
30	63A 4PIN BOX TYPE SOCKET	SE-S134	10 PCS
31	63A 4PIN STRAIGHT SOCKET	SE-S234	10 PCS
32	63A 5PIN PLUG	SE-P035	10 PCS
33	63A 5PIN BOX TYPE SOCKET	SE-S135	10 PCS
34	63A 5PIN STRAIGHT SOCKET	SE-S235	10 PCS
35	125A 5PIN PLUG	SE-P045	10 PCS
36	125A 5PIN BOX TYPE SOCKET	SE-S145	10 PCS
37	125A 5PIN STRAIGHT SOCKET	SE-S245	10 PCS
38	16 A 3PIN 2WAY SOCKET	SE-1012	40 PCS
39	16A 3PIN 3WAY SOCKET	SE-1013	20 PCS
40	16A 5PIN 3WAY SOCKET	SE-1015	20 PCS
41	32A 3PIN 3WAY SOCKET	SE-1023	20 PCS
42	32A 5PIN 3WAY SOCKET	SE-1025	20 PCS
43	16A 3PIN REV PLUG	SE-513	100 PCS
44	16A 5PIN REV PLUG	SE-515	100 PCS
45	32A 3PIN REV PLUG	SE-523	100 PCS
46	32A 5PIN REV PLUG	SE-525	100 PCS



PLUG AND SOCKET IP44x WITH CE MARK

S.NO	PRODUCT DESCRIPTION	MODEL	CTN PACKING
47	16A 3PIN PLUG	SE-P013X	60 PCS
48	16A 3PIN BOX TYPE SOCKET	SE-S113X	60 PCS
49	16A 3PIN PANEL SOCKET W/O BODY	SE-S313X	60 PCS
50	16A 3PIN STRIGHT SOCKET	SE-S213X	60 PCS
51	32A 5PIN PLUG	SE-P025X	60 PCS
52	32A 5PIN BOX TYPE SOCKET	SE-S125X	60 PCS
53	32A 5PIN PANEL SOCKET W/O BODY	SE-S325X	60 PCS
54	32A 5PIN STRIGHT SOCKET	SE-S225X	60 PCS



PLUG



BOX SOCKET



STRAIGHT SOCKET

PLUG AND SOCKET IP67 WITH CE MARK

S.NO	PRODUCT DESCRIPTION	MODEL	CTN PACKING
55	16A 3PIN PLUG	SE-P0132	60 pcs
56	16A 3PIN BOX SOCKET	SE-S1132	60 pcs
57	16A 3PIN STRAIGHT SOCKET	SE-S2132	60 pcs
58	16A 3PIN PANEL SOCKET W/O BODY	SE-S3132	60 pcs
59	16A 4PIN PLUG	SE-P0142	60 pcs
60	16A 4PIN BOX TYPE SOCKET	SE-S1142	60 pcs
61	16A 4PIN STRIGHT SOCKET	SE-S2142	60 pcs
62	16A 5PIN PLUG	SE-P0152	60 pcs
63	16A 5PIN BOX TYPE SOCKET	SE-S1152	60 pcs
64	16A 5PIN STRIGHT SOCKET	SE-S2152	60 pcs
65	32A 3PIN PLUG	SE-P0232	60 pcs
66	32A 3PIN BOX TYPE SOCKET	SE-S1232	60 pcs
67	32A 3PIN STRIGHT SOCKET	SE-S2232	60 pcs
68	32A 4PIN PLUG	SE-P0242	60 pcs
69	32A 4PIN BOX TYPE SOCKET	SE-S1242	60 pcs
70	32A 4PIN STRIGHT SOCKET	SE-S2242	60 pcs
71	32A 5PIN PLUG	SE-02522	60 pcs
72	32A 5PIN BOX SOCKET	SE-12522	60 pcs
73	32A 5PIN STRAIGHT SOCKET	SE-22522	60 pcs
74	32A 5PIN PANEL SOCKET W/O BODY	SE-32522	60 PCS
75	63A 3PIN PLUG	SE-P0332	60 pcs
76	63A 3PIN BOX TYPE SOCKET	SE-S1332	60 pcs
77	63A 3PIN STRAIGHT SOCKET	SE-S2332	60 pcs
78	63A 4PIN PLUG	SE-P0342	60 pcs
79	63A 4PIN BOX TYPE SOCKET	SE-S1342	60 pcs
80	63A 4PIN STRAIGHT SOCKET	SE-S2342	60 pcs
81	63A 5PIN PLUG	SEP0352	60 pcs
82	63A 5PIN BOX SOCKET	SE-S1352	60 pcs
83	63A 5PIN STRAIGHT SOCKET	SE-S2352	60 pcs
84	125A 5PIN PLUG	SE-P0452	60 pcs
85	125A 5PIN BOX TYPE SOCKET	SE-S1452	60 pcs
86	125A 5PIN STRIGHT SOCKET	SE-S2452	60 pcs
87	16A 3PIN 3WAY SOCKET	SE-1032	60 pcs
88	32A 5PIN 3WAY SOCKET	SE-2052	60 pcs



PLUG



STRAIGHT SOCKET



BOX SOCKET



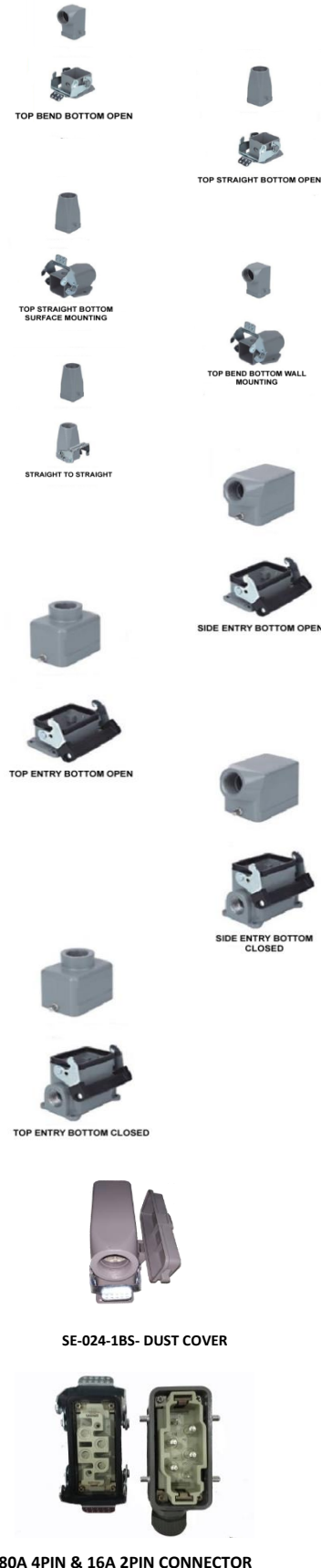
PLUG



STRAIGHT SOCKET

HEAVY DUTY CONNECTOR WITH CE MARK

S.NO	PRODUCT DESCRIPTION	MODEL	CTN PACKING
89	4 PIN TOP BEND BOTTOM OPEN	SE-04-1	200 PCS
90	4 PIN TOP STRAIGHT BOTTOM OPEN	SE-04-2	200 PCS
91	4 PIN TOP STRAIGHT BOTTOM WALL MOUNTING	SE-04-3	200 PCS
92	4 PIN TOP STRAIGHT BOTTOM SURFACE MOUNTING	SE-04-4	200 PCS
93	4 PIN STRAIGHT TO STRAIGHT	SE04-5	200 PCS
94	6 PIN SIDE ENTRY BOTTOM OPEN	SE-06-1	50 PCS
95	6 PIN TOP ENTRY BOTTOM OPEN	SE-06-2	50 PCS
96	6 PIN SIDE ENTRY BOTTOM CLOSED	SE-06-3	50 PCS
97	6 PIN TOP ENTRY BOTTOM CLOSED	SE-06-4	50 PCS
98	8 PIN SIDE ENTRY BOTTOM OPEN	SE-08-1	50 PCS
99	8 PIN PIN SIDE ENTRY BOTTOM CLOSED	SE-08-3	50 PCS
100	10 PIN SIDE ENTRY BOTTOM OPEN	SE-10-1	50 PCS
101	10 PIN TOP ENTRY BOTTOM OPEN	SE-10-2	50 PCS
102	10 PIN SIDE ENTRY BOTTOM CLOSED	SE-10-3	50 PCS
103	10 PIN TOP ENTRY BOTTOM CLOSED	SE-10-4	50 PCS
104	16 PIN SIDE ENTRY BOTTOM OPEN	SE-16-1	30 PCS
105	16 PIN TOP ENTRY BOTTOM OPEN	SE-16-2	30 PCS
106	16 PIN SIDE ENTRY BOTTOM CLOSED	SE-16-3	20 PCS
107	16 PIN TOP ENTRY BOTTOM CLOSED	SE-16-4	20 PCS
108	24 PIN SIDE ENTRY BOTTOM OPEN	SE-24-1	30 PCS
109	24 PIN TOP ENTRY BOTTOM OPEN	SE-24-2	30 PCS
110	24 PIN SIDE ENTRY BOTTOM CLOSED	SE-24-3	20 PCS
111	24 PIN TOP ENTRY BOTTOM CLOSED	SE-24-4	20 PCS
112	32 PIN SIDE ENTRY BOTTOM OPEN	SE-32-1	20 PCS
113	32 PIN TOP ENTRY BOTTOM OPEN	SE-32-2	20 PCS
114	32 PIN SIDE ENTRY BOTTOM CLOSED	SE-32-3	10 PCS
115	32 PIN TOP ENTRY BOTTOM CLOSED	SE-32-4	10 PCS
116	48 PIN SIDE ENTRY BOTTOM OPEN	SE-48-1	20 PCS
117	48 PIN TOP ENTRY BOTTOM OPEN	SE-48-2	20 PCS
118	48 PIN SIDE ENTRY BOTTOM CLOSED	SE-48-3	10 PCS
119	48 PIN TOP ENTRY BOTTOM CLOSED	SE-48-4	10 PCS
120	65 PIN SIDE ENTRY BOTTOM OPEN (Plastic)	SE-65-1	30 PCS
MODEL - 35A			
121	4 PIN SIDE ENTRY BOTTOM OPEN	SE-HSB004-1	20 PCS
122	4 PIN SIDE ENTRY BOTTOM CLOSED	SE-HSB004-3	20 PCS
123	6 PIN SIDE ENTRY BOTTOM OPEN	SE-HSB006-1	20 PCS
124	6 PIN SIDE ENTRY BOTTOM CLOSED	SE-HSB006-3	20 PCS
125	12 PIN SIDE ENTRY BOTTOM OPEN	SE HSB012-1	20 PCS
126	12 PIN SIDE ENTRY BOTTOM CLOSED	SE HSB012-3	20 PCS
Dust Cover			
127	6 PIN SIDE ENTRY BOTTOM OPEN	SE-06-01BS	20 PCS
128	10 PIN SIDE ENTRY BOTTOM OPEN	SE-010-1BS	20 PCS
129	16 PIN SIDE ENTRY BOTTOM OPEN	SE-016-01BS	20 PCS
130	16 PIN SIDE ENTRY BOTTOM CLOSED	SE-016-03BS	20 PCS
131	24 PIN SIDE ENTRY BOTTOM OPEN	SE-024-1BS	20 PCS
132	24 PIN SIDE ENTRY BOTTOM CLOSED	SE-024-3BS	20 PCS
SLIM TYPE			
133	10 PIN SIDE ENTRY BOTTOM OPEN	SE HA 10-1	
134	16 PIN SIDE ENTRY BOTTOM OPEN	SE HA 16-1	50 PCS
135	32 PIN SIDE ENTRY BOTTOM OPEN	SE-HEE-32-1	20 PCS
136	32 PIN SIDE ENTRY BOTTOM CLOSED	SE-HEE-32-3	20 PCS
MODEL - 80A & 16A			
137	6 PIN (80A 4PIN +16A 2PIN) IN 16 PIN ENCLOSURE	SE-HK-4-2-006	20 pcs
138	8 PIN (80A 8PIN) IN 16 PIN ENCLOSURE	SE-HK-4-4-008	20 pcs
139	12 PIN(80A 4PIN +16A 8PNI) IN16PIN ENCLOSURE	SE-HK-4-8-012	20 pcs



HEAVY DUTY CONNECTOR HDD SERIES WITH CE MARK

S.NO	PRODUCT DESCRIPTION	MODEL	CTN PACKING
140	SIDE ENTRY TOP	SE-H3A-MTS	200 PCS
141	BOTTOM OPEN	SE-H3A-MAG	200 PCS
142	6PIN MALE INSERT	SE-HQ-006-M	200 PCS
143	6PIN FEMALE INSERT	SE-HQ-006-F	200 PCS
144	7PIN MALE INSERT	SE-HDD-007-M	200 PCS
145	7PIN FEMALE INSERT	SE-HDD-007-F	200 PCS
146	SIDE ENTRY TOP	SE-H6B-TS	200 PCS
147	BOTTOM OPEN	SE-H6B-AGS	200 PCS
148	SIDE ENTRY TOP	SE-H10B-TS	50 PCS
149	BOTTOM OPEN	SE-H10B-AGS	50 PCS
150	24PIN MALE INSERT	SE-HDD-24-M	30 PCS
151	24PIN FEMALE INSERT	SE-HDD-234-F	30 PCS
152	42PIN MALE INSERT	SE-HDD-42-M	20 PCS
153	42PIN FEMALE INSERT	SE-HDD-42-F	20 PCS
154	24SIDE ENTRY BOTTOM OPEN	SE-HDC-HDD-24-1	30 PCS
155	42SIDE ENTRY BOTTOM OPEN	SE-HDC-HDD-42-1	20 PCS
156	72SIDE ENTRY BOTTOM OPEN	SE-HDC-HDD-72-1	20 PCS
157	108SIDE ENTRY BOTTOM OPEN	SE-HDC-HDD-108-1	10 PCS
158	MALE PIN	SE-CDM-0.5	100 PCS/PACKET
159	FEMALE PIN	SE-CDF-0.5	100 PCS/PACKET



IP68 WATERPROOF CONNECTOR WITH CE MARK

S.NO	PRODUCT DESCRIPTION	AMPERE	CTN PACKING
21mm SERIES			
160	2 PIN - STRAIGHT TO STRAIGHT	30A	100PCS
161	3 PIN - STRAIGHT TO STRAIGHT	30A	100PCS
162	4 PIN - STRAIGHT TO STRAIGHT	30A	100PCS
163	5 PIN - STRAIGHT TO STRAIGHT	30A	100PCS
164	5 PIN - STRAIGHT TO STRAIGHT	15A	100PCS
165	7 PIN - STRAIGHT TO STRAIGHT	15A	100PCS
166	9 PIN - STRAIGHT TO STRAIGHT	5A	100PCS
167	12 PIN - STRAIGHT TO STRAIGHT	5A	100PCS
21mm SERIES			
168	2 PIN - STRAIGHT TO PANEL MOUNT	30A	100PCS
169	3 PIN - STRAIGHT TO PANEL MOUNT	30A	100PCS
170	4 PIN - STRAIGHT TO PANEL MOUNT	30A	100PCS
171	5 PIN - STRAIGHT TO PANEL MOUNT	30A	100PCS
172	5 PIN - STRAIGHT TO PANEL MOUNT	15A	100PCS
173	7 PIN - STRAIGHT TO PANEL MOUNT	15A	100PCS
174	9 PIN - STRAIGHT TO PANEL MOUNT	5A	100PCS
175	12 PIN - STRAIGHT TO PANEL MOUNT	5A	100PCS
17mm SERIES			
176	2 PIN - STRAIGHT TO STRAIGHT	10A	100PCS
177	3 PIN - STRAIGHT TO STRAIGHT	10A	100PCS
178	4 PIN - STRAIGHT TO STRAIGHT	5A	100PCS
179	5 PIN - STRAIGHT TO STRAIGHT	5A	100PCS
180	7 PIN - STRAIGHT TO STRAIGHT	5A	100PCS
181	9 PIN - STRAIGHT TO STRAIGHT	5A	100PCS
17mm SERIES			
182	2 PIN - STRAIGHT TO PANEL MOUNT	10A	100PCS
183	3 PIN - STRAIGHT TO PANEL MOUNT	10A	100PCS
184	4 PIN - STRAIGHT TO PANEL MOUNT	5A	100PCS
185	5 PIN - STRAIGHT TO PANEL MOUNT	5A	100PCS
186	7 PIN - STRAIGHT TO PANEL MOUNT	5A	100PCS
187	9 PIN - STRAIGHT TO PANEL MOUNT	5A	100PCS
188	3WAY CONNECTOR	SE-200/3	100
189	5WAY CONNECTOR	SE-200/5	100
190	3WAY T TYPE CONNECTOR	SE-200/3T	100
191	5WAY T TYPE CONNECTOR	SE-200/5T	100
192	RJ45-8P STRAIGHT TO STRAIGHT	SE-RJ45/8P	100
193	RJ 45 CONNECTOR PANEL.	SE-RJ45	100
194	USB CONNECTOR	SE-USB	100



STRAIGHT TO STRAIGHT MOUNT



STRAIGHT TO PANEL MOUNT



RJ45



USB CONNECTOR



RJ45-8P



SE-200/3&5T

ROUND CONNECTOR WITH CE MARK

S.NO	PRODUCT DESCRIPTION	AMPERE	CTN PACKING
DIE-CAST ROUND CONNECTOR			
SE- P 20MM			
195	2 PIN	SE- 20 - K2Q	10 PCS SMALL BOX
196	3 PIN	SE- 20 - K3Q	10 PCS SMALL BOX
197	4 PIN	SE- 20 - K4Q	10 PCS SMALL BOX
198	5 PIN	SE- 20 - K5Q	10 PCS SMALL BOX
199	7 PIN	SE- 20 - K7Q	10PCS SMALL BOX
SE- P 28MM			
200	P28 - 4P	SE- 28- K4	10 PCS SMALL BOX
201	P28-7P	SE- 28- K7	10 PCS SMALL BOX
SE-P 32MM			
202	8 PIN	SE- 32- K8	10 PCS SMALL BOX
203	10 PIN	SE- 32- K10	10 PCS SMALL BOX
204	12 PIN	SE- 32- K12	10 PCS SMALL BOX
205	14 PIN	SE- 32- K14	10 PCS SMALL BOX
SE- P 48MM			
206	20 PIN	SE-48 -K20	10 PCS SMALL BOX
207	26 PIN	SE- 48-K26	10 PCS SMALL BOX
SE-P 55MM			
208	30 PIN	SE- 55- K30	10 PCS SMALL BOX
209	35 PIN	SE-55-K35	10 PCS SMALL BOX
STEEL ROUND CONNECTOR			
SE-TP 20MM			
210	2 PIN	SE-20 -2S	10 PCS SMALL BOX
211	3 PIN	SE-20 -3S	10 PCS SMALL BOX
212	4 PIN	SE-20 -4S	10 PCS SMALL BOX
213	7 PIN	SE-20 -7S	10 PCS SMALL BOX
214	8 PIN	SE-20 -8S	10 PCS SMALL BOX
215	10 PIN	SE-20 -10S	10 PCS SMALL BOX
216	12 PIN	SE-20 -12S	10 PCS SMALL BOX
217	14 PIN	SE-20 -14S	10 PCS SMALL BOX
SE-TP 28 MM			
218	2 PIN	SE-28 -2S	10 PCS SMALL BOX
219	3 PIN	SE-28 -3S	10 PCS SMALL BOX
220	4 PIN	SE-28 -4S	10 PCS SMALL BOX
221	7 PIN	SE-28 -7S	10 PCS SMALL BOX
222	8 PIN	SE-28 -8S	10 PCS SMALL BOX
223	10 PIN	SE-28 -10S	10 PCS SMALL BOX
224	12 PIN	SE-28 -12S	10 PCS SMALL BOX
225	14 PIN	SE-28 -14S	10 PCS SMALL BOX
226	16 PIN	SE-28-16S	10 PCS SMALL BOX



SE-P-20mm 2PIN



SE-P-32mm 10 PIN



SE-TP-20mm 3PIN



SE-TP-28mm 12PIN

PENDANT STATION WITH CE MARK

S.NO	PRODUCT DESCRIPTION	MODEL	CTN PACKING
227	UP,DOWN	SE-COB61	72 PCS
228	ON,OFF,UP,DOWN	SE-COB61A	48 PCS
229	UP,DOWN,RIGHT,LEFT	SE-COB 62	48 PCS
230	ON,OFF,UP,DOWN,RIGHT,LEFT	SE-COB62A	42 PCS
231	UP,DOWN,LEFT,RIGHT,FRONT,BACK	SE-COB 63	42 PCS
232	ON,OFF,UP,DOWN,LEFT,RIGHT,FRONT,BACK	SE-COB63A	30 PCS
233	UP,DOWN,LEFT,RIGHT,FRONT,BACK	SE-COB64	30 PCS
	CLOCKWISE, ANTO CLOCKWISE		30 PCS
234	ON,OFF,UP,DOWN,LEFT,RIGHT,FRONT,BACK	SE-COB64A	30 PCS
	CLOCKWISE, ANTO CLOCKWISE		
	NEW PUSH BUTTON COB		
235	UP,DOWN,STAY PUT	SE-COBP21H	50 PCS
236	STAYPUT, ROCKER SWITCH WITH CAPACITOR	SE-COB61DRH	50 PCS
237	UP,DOWN,LEFT,RIGHT	SE-COP 22	20 PCS
	NEW PUSH BUTTON COB		
238	IP54 2 HOLE SPRING RETURN PUSH BUTTON, 1 BLACK/WHITE FLUSH PUSH BUTTON	SE-COB-T1	100 PCS
239	IP54 3 HOLE SPRING RETURN PUSH BUTTON, 1 BLACK/2WHITE FLUSH PUSH BUTTON	SE-COB-T2	100 PCS
240	IP54 4 HOLE SPRING RETURN PUSH BUTTON, 2 BLACK/2WHITE FLUSH PUSH BUTTON	SE-COB-T3	100 PCS
	PUSH BUTTON PENDENT STATION		
241	2WAY	SE-XAC-A271	20 PCS
242	2 WAY WITH EMERGENCY STOP	SE-XAC-A2713	20 PCS
243	4WAY	SE-XAC-A471	20 PCS
244	4 WAY WITH EMERGENCY STOP	SE-XAC-A4713	20 PCS
245	6 WAY	SE-XAC-A671	20 PCS
246	6 WAY WITH EMERGENCY STOP	SE-XAC-A6713	20 PCS
247	8 WAY	SE-XAC-A871	20 PCS
248	8WAY WITH EMERGENCY STOP	SE-XAC-A8713	20 PCS
249	12WAY	SE-XAC-A1271	20 PCS
250	11 WAY WITH EMERGENCY STOP	SE-XAC-A1273	20 PCS
251	14WAY WITH EMERGENCY & 3POS SELECTOR	SE-XAC-B14	10pcs
252	16WAY WITH EMERGENCY & 3POS SELECTOR	SE-XAC-B16	10 pcs
253	2 SPEED ELEMENT	SE-XEN-1191	300 PCS
254	SPARE PUSH BUTTON-RED/GREEN/WHITE/BLACK	SE-XAC-A942	600 PCS
255	SPARE STAY PUT	SE-XAC-ES 442	500 PCS
256	SPARE RUBBER For XAC		100 PCS
257	4WAY WITH EMERGENCY	SE-XAC-PL05	20 PCS
258	6WAY WITH EMERGENCY	SE-XAC-PL07	20 PCS
259	6WAY WITH EMERGENCY & START/ALARM	SE-XAC-PL08	20 PCS



SE-COB P-21H



SE-COB 61 DRH



SE-COB T1

SE-COB T3



SE-XAC 271 SE-XAC 2713 SE-XAC 6713 SE-XAC 871



SE-XAC B-14
SE-XAC-B14



SE-XAC PL05

NEW COB H SERIES WITH CE MARK



COB H SERIES

S.NO	PRODUCT DESCRIPTION	MODEL	CTN PACKING
260	UP,DOWN, STAY PUT	SE-COB61H	50 PCS
261	UP,DOWN,RIGHT,LEFT,STAY PUT	SE-COB62H	40 PCS
262	UP,DOWN,LEFT,RIGHT,FRONT,BACK	SE-COB63H	30 PCS
263	UP,DOWN,LEFT,RIGHT,FRONT,BACK	SE-COB64H	25 PCS
	CLOCKWISE, ANTO CLOCKWISE,STAY PUT		
264	UP,DOWN,LEFT,RIGHT,FRONT,BACK	SE-COB65H	25 PCS
	CLOCKWISE, ANTO CLOCKWISE,ON,OFF,STAY PUT		

WIRELESS RADIO REMOTE CONTROL WITH CE MARK



SE-F21-E1B

SE-Q200

S.NO	PRODUCT DESCRIPTION	MODEL	CTN PACKING
265	SINGLE SPEED - 8 BUTTON	SE-F21-E1B	10 PCS
266	SINGLE SPEED - 10 BUTTON	SE-A++F23-12	10 PCS
267	SINGLE SPEED - 7 BUTTON+1START+1STAYPUT	SEQ-100	10 PCS
268	DOUBLE SPEED - 7 BUTTON+1START+1STAYPUT	SEQ-200	10 PCS

CONTROL - HS -F24 SERIES

S.NO	PRODUCT DESCRIPTION	MODEL	CTN PACKING
SINGLE SPEED			
269	5 BUTTON +1 STAYPUT +1 SELECTOR	SE-HS-F24-4S	10 PCS
270	7 BUTTON +1 STAYPUT +1 SELECTOR	SE-HS-F24-6S	10 PCS
271	9 BUTTON +1 STAYPUT +1 SELECTOR	SE-HS-F24-8S	10 PCS
272	11 BUTTON +1 STAYPUT +1 SELECTOR	SE-HS-F24-10S	10 PCS
273	12 BUTTON +1 STAYPUT +1 SELECTOR	SE-HS-F24-12S	10 PCS
274	13 BUTTON +1 STAYPUT +1 SELECTOR	SE-HS-F24-12S+	10 PCS
275	15 BUTTON +1 STAYPUT +1 SELECTOR	SE-HS-F24-14S	10 PCS
276	16 BUTTON +1 STAYPUT +1 SELECTOR	SE-HS-F24-16S	10 PCS
DOUBLE SPEED			
277	5 BUTTON +1 STAYPUT +1 SELECTOR	SE-HS-F24-4D	10 PCS
278	7 BUTTON +1 STAYPUT +1 SELECTOR	SE-HS-F24-6D	10 PCS
279	9 BUTTON +1 STAYPUT +1 SELECTOR	SE-HS-F24-8D	10 PCS
280	11 BUTTON +1 STAYPUT +1 SELECTOR	SE-HS-F24-10D	10 PCS
281	12 BUTTON +1 STAYPUT +1 SELECTOR	SE-HS-F24-12D	10 PCS
282	13 BUTTON +1 STAYPUT +1 SELECTOR	SE-HS-F24-12D+	10 PCS
283	15 BUTTON +1 STAYPUT +1 SELECTOR	SE-HS-F24-14D	10 PCS
284	16 BUTTON +1 STAYPUT +1 SELECTOR	SE-HS-F24-15D	10 PCS



TRANSMITTER/RECEIVER

SE-HD-F24-4S/4D

SE-HD-F24-8S/8D

SE-HD-F24-12S+/12D+



SOLAR MC4 CONNECTOR WITH CE MARK

S.NO	PRODUCT DESCRIPTION	MODEL	CTN PACKING
285	1WAY MC4 CONNECTOR 1000V		600 PCS
286	1 WAY MC4 CONNECTOR 1500V		
287	2WAY MC4 CONNECTOR		300 PCS
288	3WAY MC4 CONNECTOR		200 PCS
289	4WAY MC4 CONNECTOR		200 PCS
290	5WAY MC4 CONNECTOR		200 PCS
291	6WAY MC4 CONNECTOR		200 PCS
292	2WAY MC4 CONNECTOR WITH WIRE		200 PCS
293	3WAY MC4 CONNECTOR WITH WIRE		200 PCS
294	4WAY MC4 CONNECTOR WITH WIRE		100 PCS



PCT WIRE CONNECTOR WITH CE MARK

S.NO	PRODUCT DESCRIPTION	MODEL	PER PACK
295	1 WAY DIN MOUNTABLE	SE-211/218UK	100 PCS
296	2 WAY LOOPING	SE-212	100 PCS
297	3 WAY LOOPING	SE-213	100 PCS
298	4 WAY LOOPING	SE-214	100 PCS
299	5 WAY LOOPING	SE-215	100 PCS
300	8 WAY LOOPING	SE-218	100 PCS
301	2 WAY LOOPING	SE-412	100 PCS
302	3 WAY LOOPING	SE-413	100 PCS
303	4 WAY LOOPING	SE-414	100 PCS
304	5 WAY LOOPING	SE-415	100 PCS
305	2 WAY PARALLEL	SE-2-2	100 PCS
306	3 WAY PARALLEL	SE-2-3	100 PCS



PUSH BUTTON / EMPTY ENCLOSURES WITH CE MARK

S.NO	PRODUCT DESCRIPTION	MODEL	CTN PACKING
BS MODEL			
307	2 WAY	SE-BS-211	100 PCS
308	2 WAY	SE-BS-216	100 PCS
309	2 WAY	SE-BS-230	100 PCS
EMPTY ENCLOSURES			
310	1 WAY SQD MODEL	SE-XALD01	100 PCS
311	2 WAY SQD MODEL	SE-XALD02	100 PCS
312	3 WAY SQD MODEL	SE-XALD03	100 PCS
313	1 WAY SMALL BOX	SE-XAL BO1	100 PCS
314	2 WAY SMALL BOX	SE-XAL BO2	100 PCS
315	3 WAY SMALL BOX	SE-XAL BO3	100 PCS
HJ9 SERIES- WHITE			
316	1 WAY	SE-HJ9-1	100 PCS
317	2 WAY	SE-HJ9-2	100 PCS
318	3 WAY	SE-HJ9-3	75 PCS
319	4 WAY	SE-HJ9-4	50 PCS
320	6 WAY	SE-HJ9-6	50 PCS
HJ9 SERIES- YELLOW			
321	1 WAY	SE-HJ9-1	100 PCS
322	2 WAY	SE-HJ9-2	100 PCS
323	3 WAY	SE-HJ9-3	75 PCS
324	4 WAY	SE-HJ9-4	50 PCS
325	6 WAY	SE-HJ9-6	50 PCS



SE-BS 230

SE-BS 216



SE-XALD01



SE-XALb01



SE-HJ9-W SERIES



SE-HJ9-Y SERIES

DETACHABLE TOWER LIGHT WITH CE MARK

S.NO	PRODUCT DESCRIPTION	MODEL	CTN PACKING
326	BASE	SE-B01	20 PCS
327	BUZZER	SE-700	20 PCS
328	SINGLE TIER 220VAC	SE-701	20 PCS
329	TWO TIER 220VAC	SE-702	20 PCS
330	THREE TIER 220VAC	SE-703	20 PCS
331	FOUR TIER 220VAC	SE-704	20 PCS
332	FIVE TIER 220VAC	SE-705	20 PCS
333	SINGLE TIER 220VAC	SE-701	20 PCS
334	TWO TIER 24V	SE-702	20 PCS
335	THREE TIER 24V	SE-703	20 PCS
336	FOUR TIER 24V	SE-704	20 PCS
337	FIVE TIER 24V	SE-705	20 PCS



DETACHABLE TOWER LIGHT

DIGITAL METERS WITH CE MARK

S.NO	PRODUCT DESCRIPTION	MODEL	CTN PACKING
338	DIGITAL CLAMP METER	SE-DT266	20 PCS
339	DIGITAL MULTIMETER	SE-MA830L	40 PCS
340	DIGITAL MULTIMETER	SE-DT830D	100 PCS
341	DIGITAL LINE TESTER		240 PCS



SE-DT 266 SE-MA830L SE-DT830D



DIGITAL LINE TESTER

S.NO	PRODUCT DESCRIPTION	MODEL	CTN PACKING
ECONOMIC SERIES			
342	MULTILAYER FLICKERING UNIT	SE-LTE-505-1	30 PCS
343	WITHOUT BUZZER	SE-LTE-505-2	30 PCS
344		SE-LTE 505-3	30 PCS
345		SE-LTE 505-4	30 PCS
346		SE-LTE 505-5	30 PCS
347	MULTILAYER FLICKERING UNIT	SE-LTE-505J-1	30 PCS
348	WITH BUZZER	SE-LTE-505J-2	30 PCS
349		SE-LTE-505J-3	30 PCS
350		SE-LTE-505J-4	30 PCS
351		SE-LTE-505J-5	30 PCS
TOWER LIGHT LED MODEL 12/24/110/240V AC/DC			
352	MULTILAYER FLICKERING UNIT	SE-LTP-LED-505-1	30 PCS
353	WITHOUT BUZZER	SE-LTP-LED-505-2	30 PCS
354		SE-LTP-LED-505-3	30 PCS
355		SE-LTP-LED-505-4	30 PCS
356		SE-LTP-LED-505-5	30 PCS
357	MULTILAYER FLICKERING UNIT	SE-LTP-LED-505J-1	30 PCS
358	WITH BUZZER	SE-LTP-LED-505J-2	30 PCS
359		SE-LTP-LED-505J-3	30 PCS
360		SE-LTP-LED-505J-4	30 PCS
361		SE-LTP-LED-505J-5	30 PCS
DETACHABLE- TOWER LIGHT			
362	MULTI VOLT/ MULTI FUNCTION	SE-123-1J	30 PCS
363	12/24/110/220VAC / DC	SE-123-2J	30 PCS
364		SE-123-3J	30 PCS
365		SE-123-4J	30 PCS
366		SE-123-5J	30 PCS
WARNING/REVOLVING LIGHT IP 30 WITH CE MARK			
S.NO	PRODUCT DESCRIPTION	MODEL	CTN PACKING
367	BULB MODEL SCREW TYPE	SE-LTE-1101	30 PCS
368	BULB MODEL SCREW TYPE WITH BUZZER	SE-LTE-1101J	30 PCS
369	BULB MODEL SCREW TYPE	SE-LTE-1105	30 PCS
370	BULB MODEL SCREW TYPE WITH BUZZER	SE-LTE-1105J	30 PCS
371	BULB MODEL SCREW TYPE	SE-LTE-2071	30 PCS
372	BULB MODEL SCREW TYPE WITH BUZZER	SE-LTE-2071J	30 PCS
373	LED MODEL SCREW TYPE	SE-LTE-5101	30 PCS
374	LED MODEL SCREW TYPE WITH BUZZER	SE-LTE 5101J	30 PCS
375	LED MODEL SCREW TYPE	SE-LTE-5088	30 PCS
376	LED MODEL SCREW TYPE WITH BUZZER	SE-LTE-5088J	30 PCS
LED LIGHT MULTI VOLT -12V/24V/110V/220V			
377	POLYCARBONATE COVER	SE-1103	30 PCS
378	POLYCARBONATE COVER WITH BUZZER	SE-1103WJ	30 PCS
SOLAR WARNING REVOLVING LIGHT			
379	SOLAR LIGHT	SE-1081(TY-TYN)	30 PCS
SPARES FOR WARNING LIGHT			
380	CAP	SE-LTE-1101	1 PCS
381	BULB	SE-LTE-1101	1 PCS
SPARES FOR TOWER LIGHT			
382	TOWER LIGHT LED SPARE LAMP		1 PCS



SE-LED-505J



SE-LTP-LED-505J-3



SE-123-4J



1105J 1101J 2071J 5101J



SE-LTE-5088J



SE-LTE-1103WJ



SE-1081(TY-TYN)

MICRO SWITCH WITH CE MARK



S.NO	PRODUCT DESCRIPTION	MODEL	CTN PACKING
TYPE - SE G			
383	ROLLER WITH LONG LEVER	SE-W2-B	500 PCS
384	SMALL LEVER	SE-W21B	500 PCS
385	LONG LEVER	SE-G-W-B	500 PCS
386	TOP SMALL PUSH BUTTON	SE-G-B	500 PCS
387	TOP BIG PUSH BUTTON	SE-G-D-B	500 PCS
388	TOP PUSH ROD WITH METAL ROLLER "A" TYPE	SE-G-Q22-B	500 PCS
389	ROLLER WITH SMALL LEVER	SE-G-W22-B	500 PCS
390	TOP PUSH ROD WITH METAL ROLLER "B" TYPE	SE-G-Q21-B	500 PCS
391	TOP PUSH ROD	SE-G-Q-B	500 PCS
392	TOP PUHS PIN (14mm)	SE-G-S-B	500 PCS
393	TOP LEVER WITH BAND PLASTIC ROLLER(15mm)	SE-G-W2277B	500 PCS
394	LANG LEVER (100mm)	SE-W24-B	500 PCS
TYPE -SE - D4MC			
395	LONG LEVER (70mm)	SE-D4MC-1000	200 PCS
396	SMALL LEVER (42mm)	SE-D4MC-1020	200 PCS
397	PLASTIC ROLLER WITH LONG LEVER (60mm)	SE-D4MC-2000	200 PCS
398	PLASTIC ROLLER WITH SMALL LEVER(40mm)	SE-D4MC-2020	200 PCS
399	TOP LEVER WITH BAND PLASTIC ROLLER(40mm)	SE-D4MC-3030	200 PCS
400	TOP PUSH ROD	SE-D4MC-5000	200 PCS
401	TOP PUSH ROD WITH METAL ROLLER "A" TYPE	SE-D4MC-5020	200 PCS
402	TOP PUSH ROD WITH METAL ROLLER "B" TYPE	SE-D4MC-5040	200 PCS
403	MICRO SWITCH WITH MAGNET LXW20-11M		
TYPE -SE- V15			
		SE-V15-185	1000 PCS
404	HINGE LEVER	SE-V152-1C25	1000 PCS
405	SHORT HINGE ROLLER LEVER	SE-V155-1C25	1000 PCS
406	HINGE ROLLER LEVER	SE-V156-1C25	1000 PCS



LIMIT SWITCH WITH CE MARK

S.NO	PRODUCT DESCRIPTION	MODEL	CTN PACKING
TYPE -SE-ME -HEAVY DUTY			
407	ROLLER LEVER (38mm)	SE-8104	100 PCS
408	ROLLER LEVER ADJUSTABLE	SE-8108	100 PCS
409	PUSH BUTTON TOP	SE-8111	100 PCS
410	PUSH ROLLER TOP	SE-8112	100 PCS
411	PUSH ROLLER TOP SIDE	SE-8122	100 PCS
412	SPRING STICK ROD	SE-8166	100 PCS
413	CAT WHISKER NYLON	SE-8168	100 PCS
414	SPRING ARM(FLEXIBLE ROD)	SE-8169	100 PCS
415	CAT WHISKER STEEL ROLLER	SE-8107	100 PCS
TYPE -SE-ME -A TYPE METAL BODY			
416	ROLLER LEVER (38mm)	SE-8104	100 PCS
417	ROLLER LEVER ADJUSTABLE	SE-8108	100 PCS
418	PUSH BUTTON TOP	SE-8111	100 PCS
419	PUSH ROLLER TOP	SE-8112	100 PCS
420	PUSH ROLLER TOP SIDE	SE-8122	100 PCS
421	SPRING STICK ROD	SE-8166	100 PCS
422	CAT WHISKER NYLON	SE-8168	100 PCS
423	SPRING ARM(FLEXIBLE ROD)	SE-8169	100 PCS
424	CAT WHISKER STEEL ROLLER	SE-8107	100 PCS
425	FLEXIBLE COIL SPRING	SE-9101	100 PCS



S.NO	PRODUCT DESCRIPTION	MODEL	CTN PACKING
TYPE -SE-ME -B TYPE PLASTIC BODY			
426	ROLLER LEVER (38mm)	SE-8104	100 PCS
427	ROLLER LEVER ADJUSTABLE	SE-8108	100 PCS
428	PUSH BUTTON TOP	SE-8111	100 PCS
429	PUSH ROLLER TOP	SE-8112	100 PCS
430	PUSH ROLLER TOP SIDE	SE-8122	100 PCS
431	SPRING STICK ROD	SE-8166	100 PCS
432	CAT WHISKER NYLON	SE-8168	100 PCS
433	SPRING ARM(FLEXIBLE ROD)	SE-8169	100 PCS
434	CAT WHISKER STEEL ROLLER	SE-8107	100 PCS
435	FLEXIBLE COIL SPRING	SE-9101	100 PCS
TYPE -SE-3SE3			
436	NORMAL ROLLER LEVER(1NO+1NC)		
	NORMAL ARRANGMENT	SE-3SE-100-0E	100 PCS
437	NORMAL ROLLER LEVER(1NO+1NC)		
	SNAP ACTION ARRANGEMENT	SE-3SE-100-1E	100 PCS
438	3SE SPARE ELEMENT		
	LIMIT SWITCH 3 MTS WIRE TYPE IP65/67		
		SE-3104	20 PCS
439	ROLLER LEVER ADJUSTABLE	SE-3108	20 PCS
440	PUSH BUTTON TOP	SE-3112	20 P[CS
441	ROLLER PLUNGER	SE-3102	20 PCS
442	PLUNGER	SE-3111	20 PCS
443	LIMIT SWITCH WIRING WITH LED	SE-D4C-3332	20 PCS
SE-XCK-M			
444	STEEL ROLLER PLUNGER	SE-XCK-M102	100 PCS
445	STEEL END PLUNGER	SE-XCK-M110	100 PCS
446	DELRIN ROLLER LEVER HEAD	SE-XCK-M115	100 PCS
447	DELRIN ROLLER LEVER PLUNGER HEAD	SE-XCK-M121	100 PCS
SE-XCK-P			
448	STEEL ROLLER PLUNGER	SE-XCK-P102	100 PCS
449	CAT WHISKER	SE-XCK-P106	100 PCS
450	STEEL END PLUNGER	SE-XCK-P110	100 PCS
451	DELRIN ROLLER LEVER	SE-XCK-P118	100 PCS
452	DELRIN ROLLER LEVER, HORIZONTAL DIRECTION	SE-XCK-P121	100 PCS
SE- XCK-J			
453	ADJUSTABLE ROLLER LEVER	SE-XCK-J10541	50 PCS
454	SNAP ACTION ROLLER LEVER	SE-XCK-J10511	50 PCS
455	ROLLER PLUNGER	SE-XCK-J102	50 PCS
456	CAT WHISKER	SE-XCK-J106	50 PCS
457	SPRING ROD LEVER	SE-XCK-J108	50 PCS
458	PLUNGER SNAP ACTION	SE-XCK-J161	50 PCS
459		SE-XCK-J167	50 PCS
SE-XCK-S			
460	METAL END PLUNGER	SE-XCK-S101	50 PCS
461	STEEL ROLLER PLUNGER	SE-XCK-S102	50 PCS
462	STEEL ROLLER LEVER ADJUSTABLE	SE-XCK-S108	50 PCS
463	THERMOPLASTIC ROLLER LEVER	SE-XCK-S131	50 PCS
464	PLASTIC ROLLER LEVER	SE-XCK-S141	50 PCS



SE-ME-8111 SE-ME-8112 SE-ME-8122 SE-ME-8127 SE-ME-8104 SE-ME-8108 SE-ME-8111 SE-ME-8112



SE-3SE-100-1E /0E



SE-3108

SE-3104



CK-M110



SE-XCK-M121



-XCK-P118



SE-XCK-P121



SE-XCK-J161



SE-XCK-J167



SE-XCK-J10511



SE-XCK-J10541

S.NO	PRODUCT DESCRIPTION	MODEL	CTN PACKING
SE-WL			
465	ROLLER LEVER SHORT (R38)	SE-WLCA2	50 PCS
466	ADJUSTABLE ROLLER LEVER	SE-WLCA12	50 PCS
467	ADJUSTABLE LEVER ROD(140mm)	SE-WLCL	50 PCS
468	PLUNGER PLAIN	SE-WLD	50 PCS
469	PLUNGER ROLLER	SE-WLD2	50 PCS
470	COIL SPRING (6.5Dia)	SE-WLNJ	50 PCS
TYPE -SE-HL			
471	ROLLER LEVER SHORT (R38)	SE-HL5000	50 PCS
472	ADJUSTABLE ROLLER LEVER	SE-HL5030	50 PCS
473	ADJUSTABLE LEVER ROD(140mm)	SE-HL5050	50 PCS
474	PLUNGER PLAIN	SE-HL5100	50 PCS
475	PLUNGER ROLLER	SE-HL5200	50 PCS
476	COIL SPRING	SE-HL5300	50 PCS
477	BIG WHEEL	SE-LS-S191	50 PCS
478	TOP ROLLER LEVER PLUNGER	SE-K244	50 PCS
TYPE SE-JW			
479	5 PLUNGER	SE-JW2-11Z/5	100 PCS
480	3 PLUNGER	SE-JW2-11Z/3	100 PCS
481		SE-LX1012	24 PCS
GEAR LIMIT SWITCH			
482	GEAR LIMIT SWITCH 1:210/1:46/1:960	SE-DXZ	24 PCS
SPARE ELEMENT			
483	TYPE SE-XCK-M ELEMENT		200 PCS
484	TYPE SE-XCK-J ELEMENT		200 PCS
485	TYPE SE-WL ELEMENT		200 PCS
486	TYPE SE-HL ELEMENT		200 PCS
487	TYPE SE-HL ELEMENT		200 PCS
488	SPEED CONTROL (Panasonic Type)	SE-1204DV	50 PCS



SE-WLD



SE-WLCA12



SE-HL-5100



SE-HL-5030



SE-K244



SE-JW2-11Z/3



SE-DXZ



SPEED CONTROLLER

INDUCTIVE PROXIMITY SWITCH WITH CE MARK

S.NO	MODEL	SENSING DISTANCE	OUTPUT	MAX LOAD	CTN PACKING
FLUSH					
489	SE- LM4-3001PA/NA	1	PNP/NPN NO	100mA	200 PCS
490	SE-LM4-3001PB/NB	1	PNP/NPN NC	100mA	200 PCS
491	SE- LM5-3001PA/NA	1	PNP/NPN NO	100mA	200 PCS
492	SE-LM5-3001PB/NB	1	PNP/NPN NC	100mA	200 PCS
493	SE- LM6-3001NA/PA	1	NPN /PNP NO	150mA	200 PCS
494	SE- LM6-3001NB/PB	1	NPN/PNP NC	150mA	200 PCS
495	SE- LM8 -3001 NA/PA	1	NPN/PNP NO	150mA	200 PCS
496	SE- LM8 -3001 NB/PB	1	NPN/PNP NC	150mA	200 PCS
497	SE-LM8-2001A/B	1	AC NO/AC NC	150mA	200 PCS
498	SE-LM8-3001LA/LB	1	DC NO/DC NC	150mA	200 PCS
499	SE-LM8-3002PC	1	PNP NO+NC	150mA	200 PCS
500	SE -LM12-3002NA/PA	2	NPN/PNP NO	200mA	200 PCS
501	SE- LM12-3002PB/NB	2	PNP/NPN NC	200mA	200 PCS
502	SE- LM12-2002A/B	2	AC NO/AC NC	200mA	200 PCS
503	SE-LM12-3002LA/LB	2	DC NO/DC NC	200mA	200 PCS
504	SE-LM12-3002NC/PC	2	NP/PNP NO+NC	200mA	200 PCS
505	SE- LM18-3005PA/NA	5	PNP/NPN NO	200mA	200 PCS
506	SE- LM18-3005PB/NB	5	PNP/NPN NC	200mA	200 PCS
507	SE- LM18-2005A/B	5	AC NO/AC NC	200mA	200 PCS
508	SE-LM18-3005LA/LB	5	DC NO/DC NC	200mA	200 PCS
509	SE-LM18-3005PC/NC	8	PN/NP NO+NC	100mA	200 PCS
510	SE- LM30-3010PA/NA	10	PNP/NPN NO	200mA	200 PCS
511	SE- LM30-3010PB/NB	10	PNP/NPN NC	200mA	200 PCS
512	SE- LM30-2010A/B	10	AC NO/AC NC	200mA	200 PCS
513	SE-LM30-3010LA/AB	10	DC NO/DC NC	200mA	200 PCS
514	SE-LM30-3010PC/NC	15	PN/NP NO+NC	400mA	200 PCS
NON FLUSH					
515	SE- LM6-3002NA/PA	1.5	NPN /PNP NO	150mA	200 PCS
516	SE- LM6-3002NB/PB	1.5	NPN/PNP NC	150mA	200 PCS
517	SE- LM8 -3002 NA/PA	2	NPN/PNP NO	150mA	200 PCS
518	SE- LM8 -3002 NB/PB	2	NPN/PNP NC	150mA	200 PCS
519	SE- LM8 -2002A/B	2	AC NO/NC	150mA	200 PCS
520	SE-LM8- 3002LB/LA	2	DC NC/DC NO	400mA	200 PCS
521	SE -LM12-3004NA/PA	4	NPN/PNP NO	200mA	200PCS
522	SE- LM12-3004PB/NB	4	PNP/NPN NC	200mA	200 PCS
523	SE- LM12-2004A/B	4	AC NO/AC NC	200mA	200 PCS
524	SE-LM12- 3004LA/LB	4	DC NO/DC NC	400mA	200 PCS
525	SE-LM12-3004NC/PC	4	NP/PNP NO+NC	200mA	200 PCS
526	SE- LM18-3008PA/NA	8	PNP/NPN NO	200mA	200 PCS
527	SE- LM18-3008PB/NB	8	PNP/NPN NC	200mA	200 PCS
528	SE- LM18-2008A/B	8	AC NO/AC NC	200mA	200 PCS
529	SE-LM18-3008LA/LB	8	DC NO/DC NC	100mA	200 PCS
530	SE-LM18-3008PC/NC	8	PN/NP NO+NC	100mA	200 PCS
531	SE- LM30-3015PA/NA	15	PNP/NPN NO	200mA	200 PCS
532	SE- LM30-3015PB/NB	15	PNP/NPN NC	200mA	200 PCS
533	SE- LM30-2015A/B	15	AC NO/AC NC	200mA	200 PCS
534	SE-LM30-3015LB/LA	15	DC NC/DC NO	400mA	200 PCS
535	SE-LM30-3015PC/NC	15	PN/NP NO+NC	400mA	200 PCS



FLUSH TYPE



NON FLUSH TYPE

CAPACITANCE TYPE WITH CE MARK

S.NO	MODEL	DIA/LENGTH	SENSING DISTANCE	OUTPUT	MAX LOAD	N PACKIN
FLUSH						
536	SE-CM12-3008NA/PA	12*70	4MM	NPN/PNP NO	200mA	200 PCS
537	SE-CM18-3008NA/PA	18*70	8 MM	NPN/PNP NO	200mA	200 PCS
538	SE-CM18-3008PC	18*70	8 MM	PNP NO + NC	200mA	200 PCS
539	SE-CM18-3008NC	18*70	8 MM	NPN NO+NC	200mA	200 PCS
540	SE-CM30-3015NA/PA	30*70	15 MM	NPN/PNP NO	200mA	200 PCS
541	SE-CM30-3015PC/NC	30*70	30MM	PN/NP NO+NC	200mA	200 PCS
PLUG TYPE WITH WIRE		(6-36V DC)				
542	SE- LM8-3001PAT/NAT	8*50	1 MM	PNP/NPN NO	150mA	200 PCS
543	SE- LM12-3002PAT/NAT F	12*63	2MM	PNP/NPN NO	200mA	200 PCS
544	SE- LM12-3004PA/NA	12*63	4MM	PNP/NPN NO	200mA	200 PCS
545	SE-LM12-3004PA/NA PLUG ONLY			PNP/NPN NO	200mA	200 PCS
546	SE-LM12-3004PA/NA WIREONLY			PNP/NPN NO	200mA	200 PCS
547	SE-P6-				200mA	200 PCS
548	SE-L7P (2 MTS)			PNP NO+NC	200mA	200 PCS
549	SE-P6-5(4 WIRE) 5 MTS(ST)			NPN/PNP NO+NC	200mA	200 PCS
550	SE-L7P-5(4 WIRE) (5 MTS) BEND			PNP NO + NC	200mA	200 PCS



CAPACITANCE TYPE



PLUG IN TYPE

BOX TYPE WITH CE MARK

S.NO	MODEL	DIA/LENGTH	SENSING DISTANCE	OUTPUT	MAX LOAD	N PACKIN
551	SE- PS17-5DN	18*18*36	5 MM	NPN NO	300mA	200 PCS
552	SE- PS17-5AO	18*18*36	5 MM	AC NO	300mA	200 PCS
553	SE- PL-05N/P	17*17*35	5 MM	NPN/PNP NO	150mA	200 PCS
554	SE- PS25-5AO	25*25*40	5 MM	AC NO	300mA	200 PCS
555	SE- PS25-5DP/DN	25*25*40	5 MM	PNP/NPN NO	300mA	200 PCS
556	SE- PS30-10AO	30*30*53	10 MM	AC NO	300mA	200 PCS
557	SE- PS30-10DN/DP	30*30*53	10 MM	NPN/PNP NO	300mA	200 PCS
558	SE- PS40-20AO	40*40*53	20 MM	AC NO	300mA	200 PCS
559	SE- PS40-20DN/DP	40*40*53	20 MM	NPN/PNP NO	300mA	200 PCS
560	SE- LMF37-3020NA/PA	129*40*40	20 MM	NPN/PNP NO	200mA	200 PCS
561	SE-TL-Q5MC1/MB1	17*17*28	5 MM	NPN/PNP NO	50mA	200 PCS
562	SE-TL-Q5MY1	17*17*28	5 MM	AC NO	50mA	200 PCS
563	SE- TL-N5MF1/E1	25*25*38	5 MM	PNP/NPN NO	300mA	200 PCS
564	SE- TL-N10ME1/F1	30*30*52	10 MM	NPN/PNP NO	300mA	200 PCS
565	SE- TL-N20ME1/F1	53*40*40.5	20 MM	NPN/PNP NO	300mA	200 PCS
566	SE- SN04N/P	18*18*35	4 MM	NPN/PNP NO	500mA	200 PCS
567	SE-LMW5MF1	10*30.5*18	5 MM	PNP NO	500mA	200 PCS
568	SE-LMW5MC1	10*30.5*19	5 MM	NPN NP	500mA	200 PCS



SE-PL-05N



SE- LMF37-3020NA/PA



SE-TL-Q5MY1



SE-SN-04N

S.NO	MODEL	DIA/LENGTH	SENSING DISTANCE	OUTPUT	MAX LOAD	PACKING
Cylinder Type 12MM -STEEL						
569	SE-E3F1DS5C2	12*60	10CM	NPN NC	300mA	200 PCS
570	SE-E3F-1DS5C1/P1	12*60	10CM	NPN	300mA	200 PCS
571	SE-E3F-1DS5P1	12*60	5CM	PNP	300mA	200 PCS
Cylinder Type 18MM - PVC (6-36V DC)						
572	SE-E3F-DS10C4/P1	18*60	10CM	NPN/PNP NO	300mA	200 PCS
573	SE-E3F-DS30C4/P1	18*60	30CM	NPN/PNP NO	300mA	200 PCS
574	SE-E3F-DS10Y1/Y2	18*70	10CM	AC NO/AC NC	400mA	200 PCS
575	SE-E3F-DS30Y1/Y2	18*70	30CM	AC NO/AC NC	400mA	200 PCS
576	SE-E3F-DS10C2	18*70	10CM	NPN-NO	300mA	200 PCS
577	SE-E3F-DS240PI	18*60	2.4M	PNP NO	200mA	
Cylinder Type 30MM - PVC (9-380V AC)						
578	SE-E3F-DS30C2	18*70	30CM	NPN NC	300mA	200 PCS
579	SE-E3F-DS50P1/P2	30*90	50CM	PNP/NPN NO	300mA	200 PCS
580	SE-E3F-DS50Y1/Y2	30*90	50CM	AC NC/AC NO	400mA	200 PCS
Cylinder Type 18MM -STEEL (6-36V DC) (9-380V AC)						
581	SE-E3F-DS10C4	18*60	10CM	NPN NO	300mA	200 PCS
582	SE-E3F-DS10P1	18*60	10CM	PNP NO	300mA	200 PCS
583	SE-E3F-DS30C4	18*60	30CM	NPN NO	300mA	200 PCS
584	SE-E3F-DS30P1	18*60	30CM	PNP NO	300mA	200 PCS
585	SE-E3F-DS30P3	18*60	2.4M	NPN NO	300MA	200 PCS
586	SE-E3F-DS240PI	18*60	2.4M	PNP NO	200mA	200 PCS
587	SE-E3F-DS10Y1	18*70	10CM	AC NO	400mA	200 PCS
588	SE-E3F-DS10Y2	18*70	10CM	AC NC	400mA	200 PCS
589	SE-E3F-DS30Y1	18*70	30CM	AC NO	400mA	200 PCS
590	SE-E3F-DS30Y2	18*70	30CM	AC NC	400mA	200 PCS
591	SE-E3F-DS30F3	18*70	30CM			200 PCS
592	BOX TYPE - SE-E3Z-D8A	30*20*10	4M	PNP NO	100MA	200 PCS
593	SE-E3JK-DN11	50*50*20	2.5M	NPN NO	200MA	200 PCS
594	SE-E3JK-PN11	50*50*20	2.5M	PNP NO	200MA	200 PCS
595	SE-E3JK-R4M1 REFLECTOR	50*50*20	4 M	AC DC	100MA	200 PCS
596	SE- E3JM-DS70M1 REFLECTOR	75*65*25	700MM	AC DC	100MA	200 PCS
597	SE-E3JK-DS30M1 REFLECTOR	76*65*25	300MM	AC DC	100MA	200 PCS
598	SE-E3S-DS10E1	45*15*20	10CM	NPN NO	300mA	200 PCS
599	SE-E3S-DS30E1	45*15*20	30CM	NPN NO	300mA	200 PCS
600	SE- E3S-GS15N/P FORK TYPE	40.5*30.5*16	15	NPN/PNP NO	200mA	200 PCS
601	SE- E3S-GS30N1 FORK TYPE	70*52*20	30	NPN NO	200mA	200 PCS
602	SE-E3S-GS10P/N METAL FORK TY	58*30*17	10	NPN/PNP NO	200mA	200 PCS
603	SE- G139-3A1NA	139*57*36	1M	DC NO		200 PCS
604	SE- 23N-TB22	28*48*80	10	NPN /PNP	200mA	200 PCS
605	SE- G80-2A80NA	80*53*24	80CM	NPN NO	300mA	200 PCS
PHOTO ELECTRIC SWITCH						
606	SE-E3F1-R2N1/P1 WITH REFLECTOR	18*60	2 mtrs	NPN/PNP NO	300mA	200 PCS
607	SE-E3F1-5DP1-5L/DN1 TWIN THROUGH BEAM	18*70	5mtrs	PNP/NPN NO	300mA	200 PCS



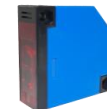
SE-E3F-DS30P1



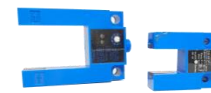
SE-E3F-DS10P1



SE-E3JK-DN11



SE-E3JK-R4M1



SE-E3F-GS30P SE-E3F-G15P1



SE- G139-3A1NA



SE-E3F1-5DP1-5

TIMER WITH CE MARK

S.NO	PRODUCT DESCRIPTION	MODEL	CTN PACKING
608	0.5S /5S / 30S / 3 MIN	SE-ST3PA-A	100 PCS
609	0.1 ~ 1S / 10S /60S /6MIN	SE-ST3PA-B	100 PCS
610	0.5~5S / 50S / 5MIN/30 MIN	SE-ST3PA-C	100 PCS
611	1~10S / 100S / 10MIN/60MIN	SE-ST3PA-D	100 PCS
612	60S / 10MIN / 60MIN /6 HOUR	SE-ST3PA-E	100 PCS
613	2MIN / 20MIN/ 2 HOUR / 12 HOUR	SE-ST3PA-F	100 PCS
614	0.1SEC - 100 HOUR	SE- H3BA-8	100 PCS
615	1.2SEC-300 HOUR	SE-H3CR-A8	100 PCS
616	10SEC / 30SEC / 60SEC /220 V/24 V	SE-H3Y3	100 PCS
617	10SEC / 30SEC / 60SEC /220 V/24 V	SE-H3Y2	100 PCS
618	10SEC / 30SEC / 60SEC /220 V/24 V	SE-H3Y4	100 PCS
619	60SEC / 60MIN	SE-JS28-A	100 PCS
620	0.01 SEC-9999HOUR	SE-DH48S-2Z	100 PCS
621	24HOUR	SE-SUL-181H	100 PCS
622	TIMER 4PIN With Cover/16A	SE-804/16A	100 PCS
623	TIMER 5PIN With Cover	SE-805/16A	100 PCS
624	TIMER 4/5 PIN 30A WITH BATTERY	SE-804/805/30A	100 PCS
625	HOUR METER	SE HM-1	100 PCS
626	HOUR METER DIGITAL	SE HM-1R	100 PCS
627	24 HOURS TIMER DIN TYPE	SE-AHC15A	100 PCS
628	PANASONIC TYPE	TBS388	100 PCS
629	DIGITAL TIMER	SE-CH3	100 PCS
630	ANALOG TIMER	SE-FMQT	100 PCS


SE-DH48S-2Z


SE-804/805 SE-FMQT SE-AHC-15A


SE-TBS 388

SE-SUL-181H

SE HM-1
FOOT SWITCH WITH CE MARK

S.NO	PRODUCT DESCRIPTION	MODEL	CTN PACKING
631	MINI PVC	SE-FS1-P	100 PCS
632	MINI METAL	SE-FS1-M	100 PCS
633	MOUSE SMALL	SE-FS2	100 PCS
634	MOUSE BIG	SE-FS3	100 PCS
635	WITHOUT COVER	SE-FS13	20 PCS
636	WITH COVER	SE-FS14	20 PCS
637	DOUBLE WITHOUT COVER YDTI-16	SE-LT3	20 PCS
638	DOUBLE WITH COVER YDTI-15	SE-LT4	10 PCS
639	WITH COVER BIG	SE-LT6H	12 PCS



SE-FS-1 P SE-FS-2 SE-FS-3



SE-FS 14 SE-LT 6H SE-LT4

SIREN/BUZZER WITH CE MARK

S.NO	PRODUCT DESCRIPTION	MODEL	CTN PACKING
640	MINI SIREN(METAL BODY)	SE-MS-190	40 PCS
641	INDUSTRIAL HOOTER(PVC BODY)	SE-MS-290	24 PCS
642	INDUSTRIAL HOOTER(METALBODY)	SE-MS-290	24 PCS
643	INDUSTRIAL HOOTER(METALBODY)	SE-MS-390	10 PCS
644	INDUSTRIAL HOOTER(METALBODY)	SE-MS-490	6 PCS
645	INDUSTRIAL HOOTER(METALBODY)	SE-MS-590	4 PCS
646	PANEL BUZZER	SE-HRB-P30	100 PCS
647	PANEL BUZZER- SQUARE	SE-HRB-P80	100 PCS
648	PANEL BUZZER- TRIANGLE	SE-HRB-P75	100 PCS
649	MULTI TONE SIREN		



SE-HRB P30 SE-MS 290 SE-MS 190 SE-HRB P80


MULTI TONE SIREN

S.NO	PRODUCT DESCRIPTION	MODEL	CTN PACKING
SMPS - 12V			
650	1 AMPS	SE-15W-12	60 PCS
651	2.1 AMPS	SE-25W-12V	60 PCS
652	4.2AMPS	SE-50W-12V	30 PCS
653	5AMPS	SE-60W-12V	30 PCS
654	6.3AMPS	SE-75W-12V	30 PCS
655	10AMPS	SE-120W-12V	20 PCS
656	12AMPS	SE-145W-12V	20 PCS
657	14.5AMPS	SE-175W-12V	20 PCS
658	16.5AMPS	SE-201W-12V	12 PCS
659	20.8AMPS	SE-250W-12V	12 PCS
660	25AMPS	SE-250W-12V	12 PCS
661	30AMPS	SE-350W-12V	10 PCS
662	40AMPS	SE-400W-12V	10 PCS
SMPS - 24V			
663	1AMPS	SE-25W-24V	60 PCS
664	2.1AMPS	SE-50W-24V	30 PCS
665	4.2AMPS	SE-100W-24V	30 PCS
666	6.3AMPS	SE-145W-24V	20 PCS
667	10AMPS	SE-240W-24V	20 PCS
668	14.5AMPS	SE-350W-24V	20 PCS
669	16.5AMPS	SE-400W-24V	20 PCS
670	20AMPS	SE-500W-24V	12 PCS
671	25AMPS	SE-600W-24V	12 PCS
672	41AMPS	SE-1000W-24V	8 PCS
SMPS - 5V			
673	1AMPS	SE-5W-5V	100 PCS
674	2AMPS	SE-10W-5V	100 PCS
675	3AMPS	SE-15W-5V	60 PCS
676	4AMPS	SE-20W-5V	60 PCS
677	5AMPS	SE-25W-5V	60 PCS
678	7AMPS	SE-35W-5V	30 PCS
679	8AMPS	SE-40W-5V	30 PCS
680	10AMPS	SE-50W-5V	30 PCS
681	12AMPS	SE-60W-5V	30 PCS
682	15AMPS	SE-75W-5V	
683	20AMPS	SE-100W-5V	30 PCS
SMPS - 15V			
684	2.1AMPS	SE-30W-15V	30 PCS
685	4AMPS	SE-60W-15V	30 PCS
686	6.3AMPS	SE-100W-15V	20 PCS
687	10AMPS	SE-150W-15V	20 PCS
688	15AMPS	SE-225W-15V	12 PCS
689	16.7AMPS	SE-250W-15V	
690	20AMPS	SE-300W-15V	12 PCS
SMPS - 48V			
691	2.1AMPS	SE-100W-48V	20 PCS
692	4AMPS	SE-200W-48V	20 PCS
693	6.3AMPS	SE-300W-48V	20 PCS
694	7.5AMPS	SE-400W-48V	
695	10AMPS	SE-500W-48V	12 PCS
696	15AMPS	SE-700W-48V	8 PCS
697	20AMPS	SE-1000W-48V	8 PCS
MEANWELL TYPE SMPS			
698	1.3A (P)	SE-DR-30-24V	60 PCS
699	2A (P)	SE-DR-45-24V	60 PCS
700	2.1A (P)	SE-DR-50-24V	60 PCS
701	2.5A (P)	SE-DR-60-24V	60 PCS
702	3.1A (M)	SE-DR-75-24V	30 PCS
703	5A (M)	SE-DR-120-24V	30 PCS
704	10A(M)	SE-DR-240-24V	30 PCS
SMPS SPARE DIN MOUTING CHANNEL			
705	BIG		500 PCS
706	SMALL		500 PCS
P- PLASTIC , M- METAL			



12V 5A SMPS



24V 10A SMPS



5V 10A SMPS



48V 20A SMPS



DIN MOUNT SMPS

S.NO	PRODUCT DESCRIPTION	MODEL	CTN PACKING
707	8 PIN	SE-MK2P	300 PCS
708	11 PIN	SE-MK3P	300 PCS
709	8 PIN	SE-MY2N	500 PCS
710	11 PIN	SE-MY3N	500 PCS
711	14 PIN	SE-MY4N	500 PCS
712	8 PIN	SE-LY2N	500 PCS
713	14 PIN	SE-LY4N	200 PCS
714	8 PIN	SE-60.12	300 PCS
715	11 PIN	SE-60.13	300 PCS
716	8PIN (PLA TYPE)	SE-TX2C	300 PCS
717	11PIN (PLA TYPE)	SE-TX3C	300 PCS
718	8PIN (SQD TYPE)	SE-RXM2C	500 PCS
719	14PIN (SQD TYPE)	SE-RXM4C	500 PCS
720	5 PIN	G2R1	1000 PCS
721	7 pin	G2R2	1000 PCS
BASE FOR RELAY			
722	8 PIN MK2 P	SE- PF083A	600 PCS
723	11 PIN MK3 P	SE-PF113A	600 PCS
724	8 PIN MY2N	SE-PYF08A	600 PCS
725	11 PIN MY3N	SE-PYF11A	600 PCS
726	14 PIN MY4N	SE-PYF14A	600 PCS
727	8 PIN LY2 N	SE-PTF08A	600 PCS
728	14 PIN LY4N	SE-PTF14A	400 PCS
729	8 PIN 60.12	SE-90.22	200 PCS
730	11 PIN 60.13	SE-90.23	200 PCS
731	8PIN (SQD TYPE)	SE-RXZE1M2C	200 PCS
732	14PIN (SQD TYPE)	SE-RXZE1M4C	200 PCS



CABLE LUGS WITH CE MARK			
S.NO	PRODUCT DESCRIPTION	MODEL	CTN PACKING
733	0.5 - 8MM	SE-0508	125000 PCS
734	0.5-10MM	SE-0510	125000 PCS
735	0.75-8MM	SE-7508	125000 PCS
736	0.75-10MM	SE-7510	125000 PCS
737	1-8MM	SE-1008	100000 PCS
738	1-10MM	SE-1010	100000 PCS
739	1-12MM	SE-1012	100000 PCS
740	1.5-8MM	SE-1508	100000 PCS
741	1.5-10MM	SE-1510	100000 PCS
742	2.5-8MM	SE-2508	62500 PCS
743	2.5-10MM	SE-2510	62500 PCS
744	4-8MM	SE-4008	50000 PCS
745	4-12MM	SE-4012	50000 PCS
746	6-10MM	SE-6010	
747	6-12MM	SE-6012	25000 PCS
748	10-12MM	SE-1012	20000 PCS
749	16-12MM	SE-1612	12500 PCS
750	25-16MM	SE-2516	200 PCS
751	35-16MM	SE-3516	200 PCS
752	50-16MM	SE-5016	200 PCS
753	50-20MM	SE-5020	200 PCS
TWIN TYPE			
754	0.5 - 8MM	TE-0508	75000 PCS
755	0.5-10MM	TE-0510	75000 PCS
756	0.75-8MM	TE-7508	75000 PCS
757	0.75-10MM	TE-7510	75000 PCS
758	1-8MM	TE-1008	75000 PCS
759	1-10MM	TE-1010	75000 PCS
760	1.5-8MM	TE-1508	50000 PCS
761	2.5-10MM	TE-2510	25000 PCS
762	4-12MM	TE-4012	20000 PCS



SINGLE TYPE LUGS



TWIN TYPE LUGS

S.NO	PRODUCT DESCRIPTION	MODEL	CTN PACKING
763	FLUSH SPRING RETURN WHITE	SE-LAY-BA11	300 PCS
764	FLUSH SPRING RETURN BLACK	SE-LAY-BA21	300 PCS
765	FLUSH SPRING RETURN GREEN	SE-LAY-BA31	300 PCS
766	FLUSH SPRING RETURN RED	SE-LAY-BA42	300 PCS
767	FLUSH SPRING RETURN YELLOW	SE-LAY-BA51	300 PCS
768	FLUSH SPRING RETURN BLUE	SE-LAY-BA61	300 PCS
769	PUSH TO LOCK, TURN TO RELEASE - E.STAYPUT	SE-LAY-BS542	225 PCS
770	JUMBO STAYPUT	SE-BS642	160 PCS
771	MUSHROOM BLACK	SE-BC21	225 PCS
772	MUSHROOM GREEN	SE-BC31	225 PCS
773	MUSHROOM RED	SE-BC42	225 PCS
774	KEY MUSHROOM	SE-BS142	225 PCS
775	JUMBO MUSHROOM	SE-BR42	160 PCS
776	SELECTOR - 2/ 3 POSITION	SE-XB2-BD2/BD3	300 PCS
777	SPRING RETURN KEY SELECTOR - 2/3POSITION	SE-XB2-BD4/BD5	300 PCS
778	KEY SELECTOR 2 / 3POSITION	SE-XB2-BG2/BG3	300 PCS
779	SPRING RETURN KEY SELECTOR - 3POSITION	SE-LAY-BG73	300 PCS
780	LED LUMINOUS FLUSH KNOB	SE-XB2-BW	300 PCS
781	LED LUMINOUS SELECTOR KNOB - 2 POSITION	SE-XB2-BW	200 PCS
782	LED LUMINOUS SELECTOR KNOB - 3 POSITION	SE-XB2-BW	200 PCS
783	LED LUMINOUS SPARE LAMP		100 PCS
784	LED PILOT LAMP	SE-XB2-BW	200 PCS
785	TWIN PUSH BUTTON	SE-BL8325	200 PCS
786	TWIN PUSH BUTTON INDICATING	SE-BW8375	160 PCS
787	CONTACT ELEMENT NO	SE-101	1500 PCS
788	CONTACT ELEMENT NC	SE-102	1500 PCS
PUSH BUTTON(PVC SERIES)22.5mm WITHOUT ELEMENT			
789	FLUSH SPRING RETURN WHITE	SE-LAY5-EA11	300 PCS
790	FLUSH SPRING RETURN BLACK	SE-LAY5-EA21	300 PCS
791	FLUSH SPRING RETURN GREEN	SE-LAY5-EA31	300 PCS
792	FLUSH SPRING RETURN RED	SE-LAY5-EA42	300 PCS
793	FLUSH SPRING RETURN YELLOW	SE-LAY5-EA51	300 PCS
794	FLUSH SPRING RETURN BLUE	SE-LAY5-EA61	300 PCS
795	PUSH TO LOCK, TURN TO RELEASE - E.STAYPUT	SE-E5542	225 PCS
796	SELECTOR - 2/ 3 POSITION	SE-ED21/ED33	300 PCS
797	KEY SELECTOR 2 / 3POSITION	SE-EG21/EG33	300 PCS
798	KEY MUSHROOM	SE-E5142	225 PCS
799	MUSHROOM BLACK	SE-EC21	225 PCS
800	MUSHROOM GREEN	SE-EC31	225 PCS
801	MUSHROOM RED	SE-EC42	225 PCS
PUSH BUTTON - SQD TYPE HARMONY SERIES			
802	PUSH BUTTON RED/GREEN/BLUE/YELLOW	SE-TBS-AA	300 PCS
803	STAYPUT	SE-A5542	225 PCS
804	ELEMENT NO/NC	SE-TB4 101/102	1500 PCS
805	SELECTOR SWITCH-2 / 3 POSITION	SE-TB5 AD 21/33	225 PCS
PUSHBUTTON - HANYOUNG TYPE 30MM			
806	PUSH BUTTON - RED/GREEN	SE-PB3011	300 PCS
807	STAYPUT	SE-PB30112S	300 PCS
808	SELECTOR - 2 POSITION	SE-PB11X2P	300 PCS
809	SELECTOR - 3 POSITION	SE-PB11X3P	300 PCS
810	LUMINOUS PUSH BUTTON	SE-PB3011D	300 PCS
811	MUSHROOM	SE-PB3011M	300 PCS
812	ELEMENT 1no/1nc	SE-PB E	300 PCS
813	ELEMENT 2no/2nc	SE-PB E	300 PCS
Long Push Button (Plastic Series) 22.5mm with Contact Elements 1NO			
814	FLUSH SPRING RETURN WHITE	SE-XB2-EA111	500 PCS
815	FLUSH SPRING RETURN BLACK	SE-XB2-EA121	500 PCS
816	FLUSH SPRING RETURN GREEN	SE-XB2-EA131	500 PCS
817	FLUSH SPRING RETURN RED	SE-XB2-EA142	500 PCS
818	FLUSH SPRING RETURN YELLOW	SE-XB2-EA151	500 PCS
819	FLUSH SPRING RETURN BLUE	SE-XB2-EA161	500 PCS
LOCKABLE (Push to Lock)			
820	LOCKABLE PUSH BUTTON WHITE	SE-XB2-EH111	500 PCS
821	LOCKABLE PUSH BUTTON BLACK	SE-XB2-EH121	500 PCS
822	LOCKABLE PUSH BUTTON GREEN	SE-XB2-EH131	500 PCS
823	LOCKABLE PUSH BUTTON RED	SE-XB2-EH142	500 PCS
824	LOCKABLE PUSH BUTTON YELLOW	SE-XB2-EH151	500 PCS
825	LOCKABLE PUSH BUTTON BLUE	SE-XB2-EH161	500 PCS



S.NO	PRODUCT DESCRIPTION	MODEL	CTN PACKING
826	FLUSH SPRING RETURN WHITE -R/G/Y/B/W	SE-11	500 PCS
827	SELECTOR - 2 POSITION	SE-11X2P	500 PCS
828	SELECTOR - 3 POSITION	SE-11X3P	500 PCS
829	STAYPUT RED	SE-11ZS	500 PCS
830	MUSHROOM -R/G/B	SE-11M	500 PCS
831	LUMINOUS - R/G/B/Y	SE-11D	500 PCS
832	LUMINOUS MUSHROOM - 24/220 VAC/DC	SE-10D	500 PCS
LED INDICATING LAMP (BARREL) TYPE 22.5MM			
22.5 MM BLACK BODY - 220V AC			
833	RED/YELLOW	SE-AD22-22DS	1000 PCS
834	GREEN/BLUE	SE-AD22-22DS	1000 PCS
835	WHITE	SE-AD22-22DS	1000 PCS
22.5MM BLACK BODY - 24V/110V AC/DC			
836	RED/YELLOW	SE-AD22-22DS	1000 PCS
837	GREEN/BLUE	SE-AD22-22DS	1000 PCS
838	WHITE	SE-AD22-22DS	1000 PCS
22.5 MM BLACK BODY - 12V/440VAC/DC			
839	RED/YELLOW	SE-AD22-22DS	1000 PCS
840	GREEN/BLUE	SE-AD22-22DS	1000 PCS
841	WHITE	SE-AD22-22DS	1000 PCS
22.5MM WHITE BODY -220V AC			
842	RED/YELLOW	SE-AD22-22DS	1000 PCS
843	GREEN/BLUE	SE-AD22-22DS	1000 PCS
844	WHITE	SE-AD22-22DS	1000 PCS
22.5MM WHITE BODY - 24V/110V AC/DC			
845	RED/YELLOW	SE-AD22-22DS	1000 PCS
846	GREEN/BLUE	SE-AD22-22DS	1000 PCS
847	WHITE	SE-AD22-22DS	1000 PCS
22.5MM WHITE BODY -12V TO 220V AC/DC			
MULTIVOLTAGE			
848	RED/YELLOW	SE-AD22-22DS	1000 PCS
849	GREEN/BLUE	SE-AD22-22DS	1000 PCS
22.5MM -WHITE BODY - 12V/440V/48V			
850	RED/YELLOW	SE-AD22-22DS	1000 PCS
851	GREEN/BLUE	SE-AD22-22DS	1000 PCS
852	WHITE	SE-AD22-22DS	1000 PCS
22.5 DIA PANEL BUZZER 220/24V AC/DC			
853	PANEL BUZZER LED INDICATING -R/G -12/220	SE-AD22-22SM	1000 PCS
854	PANEL BUZZER LED INDICATING -R/G - 24/110V	SE-AD22-22SM	1000 PCS
16MM BLACK BODY 220VAC			
855	RED/YELLOW	SE-AD16-16C	1000 PCS
856	GREEN/BLUE	SE-AD16-16C	1000 PCS
16MM 110V/24V AC/DC			
857	RED/YELLOW	SE-AD16-16C	1000 PCS
858	GREEN	SE-AD16-16C	1000 PCS
859	BLUE	SE-AD16-16C	1000 PCS
16MM 12V AC/DC			
860	RED/YELLOW	SE-AD16-16C	1000 PCS
861	GREEN	SE-AD16-16C	1000 PCS
862	BLUE	SE-AD16-16C	1000 PCS
22.5MM WHITE BODY HEAVY (SQD)			
12-220V AC/DC			
863	RED/YELLOW	SE-AS227S	1000 PCS
864	GREEN/BLUE	SE-AS227S	1000 PCS
VOLTMETERS / AMMETERS			
865	VOLTMETER	SE-AD16-22V	1000 PCS
866	AMMETER	SE-AD16-22A	1000 PCS
867	VOLTMETER/AMMETER/HZ METER	SE-AD16-22V/A/HZ	1000 PCS
868	VOLTMETER/AMMETER/TEMPERATURE	SE-AD16-22V/A/TZ	1000 PCS
869	VOLTMETER/AMMETER	SE-AD16-22V/A	1000 PCS



22.5mm DIA LED INDICATING LAMP BLACK BODY



22.5mm DIA LED INDICATING LAMP WHITE BODY



16mm LED INDICATING LAMP

5 Colors Optional



VOLT/
AMMETER
COMBINED



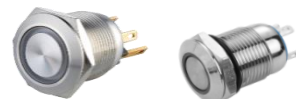
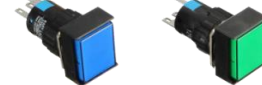
22.5MM LED INDICATOR
LAMP SQR



VOLTMETER

22.5mm DIA PUSH BUTTON (LA SERIES) WITH CE MARK

S.NO	PRODUCT DESCRIPTION	MODEL	CTN PACKING
870	FLUSH BUTTON, AUTO-RETURN,AUTO-LOCK	SE- LA3811	500 PCS
871	FLUSH BUTTON WITH LAMP 6-380V	SE -LA3811 D	500 PCS
872	AUTO LOCKING MUSHROOM PUSH BUTTON, PUSH TO LOCK, ROTATE CLOCKWISE TO RELEASE (STAYPUT)	SE-LA3811 ZS	500 PCS
873	MUSHROOM BUTTON, AUTO-RETURN,AUTO-LOCK	SE-LA3811MD	500 PCS
874	SELECTOR SWITCH - 2/3 POSITION	SE-LA3811-21/33	500 PCS
875	SELECTOR SWITCH WITH LAMP, STANDARD HANDLE 2P SWITCH, RED/GREEN	SE-LAY38-11DX-21	500 PCS
876	SELECTOR SWITCH WITH LAMP, STANDARD HANDLE 3P SWITCH, RED/GREEN	SE-LAY38-11DX-31	500 PCS
877	LA38 SPARE ELEMENT	1NO+1NC	500 PCS
MONO LEVER SWITCH		22.5/30.5mm DIA	
878	2 POSITION SPRING RETURN	PA22 / 2022	200 PCS
879	2 POSITION LOCKED	PA12 / 201	200 PCS
880	4 POSITION SPRING RETURN	PA24 / 402	200 PCS
881	4 POSITION LOCKED	PA14 / 4022	200 PCS
16MM DIA - ROUND PUSH BUTTON			
882	ILLUMINATED MOMENTARY, 24/220V-R/Y/G/B	SE-TA16-11D	200 PCS
883	SELECTOR - 2 POSITION	SE-TA16-E11X	200 PCS
884	SELECTOR - 3 POSITION	SE-TA16-E22XS	200 PCS
885	ILLUMINATED SELECTOR-2 POSITION 24/220VAC	SE-TA16-E11XD	200 PCS
886	ILLUMINATED SELECTOR-3 POSITION 24/220VAC	SE-TA16-E11XSD	200 PCS
887	KEY SELECTOR 2 POSITION	SE-TA16-E11Y	200 PCS
888	KEY SELECTOR 3 POSITION	SE-TA16-E22YS	200 PCS
889	EMERGENCY STOP-STAYPUT	SE-TA16-E11Z	200 PCS
890	MUSHROOM PUSH BUTTON RED	SE-TA16-E11M	200 PCS
891	ILLUMINATED MUSHROOM RED-24/220VAC	SE-TA16-E11MD	200 PCS
892	PUSH TO LOCK	SE TA16-E11TD	
893	ROUND PILOT LAMP - R/G/Y/B - 24/220VAC	SE-TA16-C	200 PCS
SQUARE PUSH BUTTON			
894	ILLUMINATED MOMENTARY, 24/220V-R/Y/G/B	SE-TA16-11DF	200 PCS
895	SQUARE PILOT LAMP - R/G/Y/B - 24/220VAC	SE-TA16-CF	200 PCS
RECTANGLE PUSH BUTTON			
896	ILLUMINATED MOMENTARY, 24/220V-R/Y/G/B	SE-TA16-E11DJ	200 PCS
897	RECTANGLE PILOT LAMP - R/G/Y/B - 24/220VAC	SE-TA16-CJ	200 PCS
METAL PUSH BUTTON			
898	FLAT MOMENTARY/MAINTAINED 24V/220V R/Y/G/B 12mm	SE-TYJ12-261	200 PCS
899	FLAT MOMENTARY/MAINTAINED 24V/220V R/Y/G/B 16mm	SE-TYJ16-262	200 PCS
SPARES FOR PUSH BUTTON			
900	EMERGENCY PLATE	SE-LAY5-D60	1000 PCS
901	PVC PUSH BUTTON PLATE	SE-LAY5A	1000 PCS
902	DUST COVER	SE-LAY5-22A	1000 PCS
903	P/B DUMMY	SE-LAY5-22	1000 PCS
904	TRANSPARENT COVER LOCKABLE	SE-TB40P	200 PCS
905	STAYPUT CAP	SE-ES40	200 PCS
906	ROCKER SWITCH RED/YELLOW/GREEN/BLUE	SE-KCD-4	1000PCS



12/16mm STAINLESS STEEL PUSH BUTTON



SE-KCD4

S.NO	PRODUCT DESCRIPTION	MODEL	CTN PACKING
907	9 AMPS	SE-1C-0910/0901	50 PCS
908	12 AMPS	SE-1C-1210/1201	50 PCS
909	18 AMPS	SE-1C-1810/1801	50 PCS
910	25 AMPS	SE-1C-2510/2501	50 PCS
911	32 AMPS	SE-1C-3210/3201	50 PCS
912	40 AMPS	SE-1C-4011	20 PCS
913	50 AMPS	SE-1C-5011	20 PCS
914	65 AMPS	SE-1C-6511	20 PCS
915	80 AMPS	SE-1C-8011	20 PCS
916	95 AMPS	SE-1C-9511	20 PCS
	COIL		
917	9 / 12 / 18 AMPS	SE-X1-D2	100 PCS
918	25 / 32 AMPS	SE-X1-D4	100 PCS
919	40 / 50 / 65 / 80 / 95AMPS	SE-X1-D6	100 PCS
	AC CONTROL RELAY TYPE		
920	10 AMPS	SE-1C-DN22	100 PCS
921	10 AMPS	SE-1C-DN31	100 PCS
922	10 AMPS	SE-1C-DN40	100 PCS
	ADD ON BLOCK TYPE		
923	2NO	SE-1C-D20	250 PCS
924	1NO+1NC	SE-1C-D11	250 PCS
925	2C	SE-1C-D02	250 PCS
926	4NO	SE-1C-D4	200 PCS
927	3NO+1NC	SE-1C-D31	200 PCS
928	2NO+2NC	SE-1C-D22	200 PCS
929	1NO+3NC	SE-1C-D13	200 PCS
930	4NC	SE-1C-D04	200 PCS
	THERMAL OVER LOAD RELAY TYPE 01-93A		
931	0.10 TO 25A	SE-1R-01 TO 22	100 PCS
932	23 TO 40A	SE-1R-32TO33	100 PCS
933	30 TO 93A	SE-2R -55 TO80	100 PCS
	DEFINITE PURPOSE CONTACTOR		
934	1 Pole AC Contactor	SE-1XU01AACN	100 PCS
935	2 Pole AC Cotacctor	SE-2XU01AACN	100 PCS
	SQD TYPE CONTACTOR		
936	9AMPS	SE-SQD-LCID-9A	100 PCS
937	12AMPS	SE-SQD-LCID-12A	100 PCS
938	18AMPS	SE-SQD-LCID-18A	100 PCS
939	25AMPS	SE-SQD-LCID-25A	100 PCS
940	32AMPS	SE-SQD-LCID-32A	100 PCS
941	40AMPS	SE-SQR-LCID-40A	20 PCS
942	50AMPS	SE-SQR-LCID-50A	20 PCS
943	65AMPS	SE-SQR-LCID-65A	20 PCS
944	80AMPS	SE-SQR-LCID-80A	20 PCS
945	95AMPS	SE-SQR-LCID-95A	20 PCS
	SQD TYPE ADD ON BLOCK		
946	1NO+1NC (SQD NEW TYPE)	SE-LA-DN11	250 PCS
947	2NO+2NC (SQD NEW TYPE)	SE-LA-DN22	250 PCS
	THERMAL OVER LOAD RELAY		
948	LRD	SE-LRD -01-22A	100 PCS



SE-1D CONTACTOR



COIL



4NC ADD ON BLOCK



SE-1C-D11



LR2 THERMAL OLR



1POLE/2POLE DEFINITE PURPOSE CONTACTOR



SE-LC1D SERIES



ADD ON BLOCK - SQD TYPE LRD RELAY

S.NO	PRODUCT DESCRIPTION	MODEL	CTN PACKING
949	115 AMPS	SE-1F-115A	6 PCS
950	150 AMPS	SE-1F-150A	6 PCS
951	185 AMPS	SE-1F-185A	6 PCS
952	225 AMPS	SE-1F-225A	6 PCS
953	265 AMPS	SE-1F-265A	6 PCS
954	330 AMPS	SE-1F-330A	2 PCS
955	400 AMPS	SE-1F-400A	2 PCS
956	500 AMPS	SE-1F-500A	1 PCS
957	630 AMPS	SE-1F-630A	1 PCS
	COIL		
958	115 AMPS	SE-X1-F1	30 PCS
959	150 AMPS	SE-X1-F1	30 PCS
960	185 AMPS	SE-X1-F2	30 PCS
961	225 AMPS	SE-X1-F2	30 PCS
962	265 AMPS	SE-X1-F3	30 PCS
963	330 AMPS	SE-X1-F3	20 PCS
964	400 AMPS	SE-X1-F4	20 PCS
965	500 AMPS	SE-X1-F5	20 PCS
966	630 AMPS	SE-X1-F6	20 PCS
	KIT		
967	115 AMPS	SE-1K-115A	25 PCS
968	150 AMPS	SE-1K-150A	25 PCS
969	185 AMPS	SE-1K-185A	25 PCS
970	225 AMPS	SE-1K-225A	25 PCS
971	265 AMPS	SE-1K-265A	25 PCS
972	330 AMPS	SE-1K-330A	20 PCS
973	400 AMPS	SE-1K-400A	20 PCS
974	500 AMPS	SE-1K-500A	10 PCS
975	630 AMPS	SE-1K-630A	10 PCS
	VOLT:50HZ: 24V /48V/110V/220V/415V		
	COIL Cat No.:B5/E5/F5/M5/N5		
	TIME DELAY RELAY TYPE		
976	ON DELAY 30/60/180 Sec	SE-2-DT2	100 PCS
977	OFF DELAY 30/60/180 Sec	SE-2-DT3	100 PCS



DELAY TIMER

IP67 - FLOOD LIGHT FITTING WITH CE MARK

S.NO	PRODUCT DESCRIPTION	MODEL	CTN PACKING
978	30W-SMD/2835	SE-30W	20
979	50W-SMD/5730	SE-50W	10
980	100W-SMD/5730	SE-100W	5
981	150W-SMD/5730	SE-150W	5
982	200W(200W)-SMD/5730	SE-200W	5
983	300W(300W)-SMD/2835	SE-300W	1
984	400W(400W)-SMD/2835	SE-400W	1



JUNCTION BOX WITH CE MARK

S.NO	PRODUCT DESCRIPTION	MODEL	CTN PACKING
985	JUNCTION BOX IP44	SE-85*85*50	200 PCS
	IP56		
986	JUNCTION BOX IP56	SE-80*80*40	200 PCS
987	JUNCTION BOX IP56	SE-100*100*50	100 PCS
988	JUNCTION BOX IP56	SE-120*80*40	60 PCS
989	JUNCTION BOX IP56	SE-150*110*70	60 PCS
990	JUNCTION BOX IP56	SE-190*140*70	30 PCS
	IP65		
991	JUNCTION BOX IP65	SE-100*100*70	100 PCS
992	JUNCTION BOX IP65	SE-150*110*70	60 PCS
993	JUNCTION BOX IP65	SE-150*150*70	60 PCS
994	JUNCTION BOX IP65	SE-200*100*70	60 PCS
995	JUNCTION BOX IP65	SE-200*155*80	30 PCS
996	JUNCTION BOX IP65	SE-200*200*80	30 PCS
997	JUNCTION BOX IP65	SE-255*200*80	30 PCS
998	JUNCTION BOX IP65	SE-300*250*120	20 PCS
999	JUNCTION BOX IP65	SE-400*300*120	5 PCS
1000	JUNCTION BOX IP66	SE-400*350*120	5 PCS
	IP67 BOX WITH TERMINAL		
1001	JUNCTION BOX IP67 9025Z	SE-88*88*53	50 PCS
1002	JUNCTION BOX IP67 9045Z	SE-98*98*61	50 PCS
1003	JUNCTION BOX IP67 9065Z	SE-139*119*70	50 PCS
1004	JUNCTION BOX IP67 9105Z	SE-167*125*82	50 PCS
1005	JUNCTION BOX IP67 9255Z	SE-200*160*98	30 PCS
	IP66		
1006	JUNCTION BOX IP66	SE-110*110*110	90 PCS
1007	JUNCTION BOX IP66	SE-155*115*110	50 PCS
1008	JUNCTION BOX IP66	SE-215*150*110	30 PCS
1009	JUNCTION BOX IP66	SE-255*200*160	14 PCS
1010	JUNCTION BOX IP66	SE-310*230*145	12 PCS
	JUNCTION BOX WITH TRANSPARENT COVER - NEW		
1011	JUNCTION BOX IP67	SE-110*80*70	112 PCS
1012	JUNCTION BOX IP67	SE-130*80*70	96 PCS
1013	JUNCTION BOX IP67	SE-180*80*70	68 PCS
1014	JUNCTION BOX IP67	SE-250*80*70	50 PCS
1015	JUNCTION BOX IP67	SE-200*150*100	45 PCS
1016	JUNCTION BOX IP67	SE-250*150*100	36 PCS
1017	JUNCTION BOX IP67	SE-200*200*130	24 PCS
1018	JUNCTION BOX IP67	SE-380*280*130	12 PCS
	IP66 WEATHER PROOF MCB BOX		
1019	4 POLE WEATHER PROOF MCB BOX	SE-A66CB4N	20 PCS
1020	8 POLE WEATHER PROOF MCB BOX	SE-A66CB8N	12 PCS
	HT SERIES MCB BOX		
1021	5WAY	SE-HT-5	40
1022	12 WAY	SE-HT-12	30



SE-85*85*50



SE-100*100*70



JUNCTION BOX WITH TERMINALS



IP66 JUNCTION BOX



TRANSPARENT COVER JUNCTION BOX



SE-A66CB8N



SE-HT-5



SE-HT-12

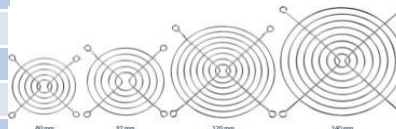
PG CABLE GLANDS WITH CE MARK

S.NO	PRODUCT DESCRIPTION	MODEL	CTN PACKING
1023		SE-PG7	6000 PCS
1024		SE-PG9	4000 PCS
1025		SE-PG11	2900 PCS
1026		SE-PG13.5	2300 PCS
1027		SE-PG16	1700 PCS
1028		SE-PG19	1600 PCS
1029		SE-PG21	1000 PCS
1030		SE-PG25	1000 PCS
1031		SE-PG29	500 PCS
1032		SE-PG36	360 PCS
1033		SE-PG42	220 PCS
1034		SE-PG48	240 PCS
1035		SE-PG63	180 PCS



COOLING FAN/ FAN GRILLS WITH CE MARK

S.NO	PRODUCT DESCRIPTION	MODEL	CTN PACKING
1036	3" Inch 12V & 24V	SE-80*80*25	100 PCS
1037	3" Inch 220V	SE-80*80*38/25	50/100 PCS
1038	3.5" Inch 12V & 24V	SE-92*92*25	100 PCS
1039	3.5" Inch 220V	SE-92*92*38/25	50/100 PCS
1040	4" Inch 12V /24V	SE-120*120*38	40 PCS
1041	4" Inch 220V	SE-120*120*38	40 PCS
1042	4" Inch 110V	SE-120*120*38	40 PCS
1043	4" Inch BALL BEARING	SE-120*120*38	40 PCS
1044	4" Inch SQ/RD	SE-120*120*38	40 PCS
1045	4" Inch 220V Pin type	SE-120*120*38	40 PCS
1046	6" Inch 220V/110V (SQ)	SE-150*150*50	20 PCS
1047	6 " Inch 220V/110V (OVAL)	SE-172*150*51	12 PCS
1048	6" Inch 220V/110V (Sq & Round)	SE-170*170*51	12 PCS
1049	6" Inch 220V/110V (Round)	SE-172*163*51	12 PCS
1050	8" Inch 220V/110V (SQ)	SE-200*200*60	10 PCS
1051	8" Inch 220V/110V (Round)	SE-220*220*60	10 PCS
1052	8" Inch 220V/110V (Sq & Round)	SE-220*220*60	10 PCS
1053	GRILL/3"	80*80	
1054	GRILL/3.5"	92*92	
1055	GRILL/4"	120*120	1000 PCS
1056	GRILL/6"	150*150	500 PCS
1057	GRILL/8"	200*200	500 PCS



S.NO	PRODUCT DESCRIPTION	MODEL	CTN PACKING
	SIZE 000		
1058	2A	SE-000 2	240 PCS
1059	4A	SE-000 4	240 PCS
1060	6A	SE-000 6	240 PCS
1061	8A	SE-000 8	240 PCS
1062	10A	SE-000 10	240 PCS
1063	16A	SE-000 16	240 PCS
1064	20A	SE-000 20	240 PCS
1065	25A	SE-000 25	240 PCS
1066	32A	SE-000 32	240 PCS
1067	40A	SE-000 40	240 PCS
1068	50A	SE-000 50	240 PCS
1069	63A	SE-000 63	240 PCS
1070	80A	SE-000 80	240 PCS
1071	100A	SE-000 100	240 PCS
	SIZE00		
1072	125A	SE-00-125	180 PCS
1073	160A	SE-00-160	180 PCS
	SIZE1		
1074	50A	SE-1-50	72 PCS
1075	63A	SE-1-63	72 PCS
1076	80A	SE-1-80	72 PCS
1077	100A	SE-1-100	72 PCS
1078	125A	SE-1-125	72 PCS
1079	160A	SE-1-160	72 PCS
1080	200A	SE-1-200	72 PCS
1081	250A	SE-1-250	72 PCS
	SIZE 2		
1082	200A	SE-2-200	45 PCS
1083	250A	SE-2-250	45 PCS
1084	315A	SE-2-315	45 PCS
1085	400A	SE-2-400	45 PCS
	SIZE 3		
1086	315A	SE-3-315	30 PCS
1087	400A	SE-3-400	30 PCS
1088	500A	SE-3-500	30 PCS
1089	630A	SE-3-630	30 PCS
1090	800A	SE-3-800	30 PCS
1091	FUSE PULLER	SE-RTO	50 PCS
	10*38 / 14*51 FUSES & FUSE HOLDER		SP*
1092	NYLON	10*38	300 PCS
1093	NYLON	14*51	200 PCS
			TP*
1094	NYLON	10*38	120 PCS
1095	NYLON	14*51	60 PCS
	CYLINDRICAL FUSE		
1096		14*51/2-32A	1000 PCS
1097		14*51/40-63A	1000 PCS
1098		10*38/1-32A	2000 PCS



*SP- SINGLE POLE

*TP- THREE POLE

S.NO	PRODUCT DESCRIPTION	MODEL
1099	2A	SE-NS2
1100	4A	SE-NS4
1101	S	SE-NS6
1102	10A	SE-NS10
1103	16A	SE-NS16
1104	20A	SE-NS20
1105	25A	SE-NS25
1106	32A	SE-NS32
1107	6A	SE-TIA6
1108	10A	SE-TIA10
1109	16A	SE-TIA16
1110	20A	SE-TIA20
1111	25A	SE-TIA25
1112	32A	SE-TIA32
1113	36A	SE-TIS36
1114	50A	SE-TIS50
1115	63A	SE-TIS63
1116	80A	SE-TSD80
1117	100A	SE-TSD100
1118	125A	SE-TSD125
1119	125A	SE-TSF125
1120	160A	SE-TSF160
1121	200A	SE-TSF200
1122	250A	SE-TSF250
1123	250A	SE-TSK250
1124	315A	SE-TSK315
1125	355A	SE-TSMS355
1126	400A	SE-TSMS400
1127	560A	SE-TSL560
1128	630A	SE-TSL630
1129	670A	SE-TSL670
1130	710A	SE-TSL710
1131	750A	SE-TSL750
1132	800A	SE-TSL800



S.NO	PRODUCT DESCRIPTION	MODEL	CTN PACKING
SINGLE PHASE AC TO DC INPUT (3.32V DC) OUTPUT(90-480V AC)			
1133	10AMPS/16AMPS	SE-10DA/16DA	200 PCS
1134	25AMPS	SE-25DA	200 PCS
1135	40AMPS	SE-40DA	200 PCS
1136	50AMPS	SE-50DA	200 PCS
1137	60AMPS	SE-60DA	200 PCS
1138	70AMPS	SE-70DA	200 PCS
1139	80AMPS	SE-80DA	200 PCS
1140	90AMPS	SE-90DA	200 PCS
1141	100AMPS	SE-100DA	200 PCS
1142	120AMPS	SE-120DA	200 PCS
SINGLE PHASE AC TO AC INPUT (80-250V AC) OUTPUT(24-480V AC)			
1143	10AMPS	SE-10AA	200 PCS
1144	16AMPS	SE-16AA	200 PCS
1145	25AMPS	SE-25AA	200 PCS
1146	40AMPS	SE-40AA	200 PCS
1147	50AMPS	SE-50AA	200 PCS
1148	60AMPS	SE-60AA	200 PCS
1149	70AMPS	SE-70AA	200 PCS
1150	90AMPS	SE-90AA	200 PCS
SINGLE PHASE DC TO DC INPUT (3.32V DC) OUTPUT(24V-480V DC)			
1151	10AMPS	SE-10DD	200 PCS
1152	16AMPS	SE-16DD	200 PCS
1153	25AMPS	SE-25DD	200 PCS
1154	40AMPS	SE-40DD	200 PCS
1155	50AMPS	SE-50DD	200 PCS
1156	60AMPS	SE-60DD	200 PCS
1157	70AMPS	SE-70DD	200 PCS
1158	90AMPS	SE-90DD	200 PCS
THREE PHASE DC TO AC INPUT (4.32V DC) OUTPUT(24-480V AC)			
1159	10AMPS	SE-10DA	
1160	16AMPS	SE-16DA	100 PCS
1161	25AMPS	SE-25DA	100 PCS
1162	40AMPS	SE-40DA	100 PCS
1163	50AMPS	SE-50DA	100 PCS
1164	60AMPS	SE-60DA	100 PCS
1165	75AMPS	SE-75DA	100 PCS
1166	90AMPS	SE-90DA	100 PCS
THREE PHASE AC TO AC INPUT (380V DC) OUTPUT(70-280V AC)			
1167	40AMPS	SE-40AA	100 PCS
1168	50AMPS	SE-50AA	100 PCS
1169	60AMPS	SE-60AA	100 PCS
1170	70AMPS	SE-70AA	100 PCS
1171	90AMPS	SE-90AA	100 PCS



SINGLE PHASE SSR



THREE PHASE SSR

S.NO	PRODUCT DESCRIPTION	MODEL	CTN PACKING
SSR BLUE BODY			
1172	10A	SE-CELDUC-10DA	200 PCS
1173	16A	SE-CELDUC-16DA	200 PCS
1174	25A	SE-CELDUC-25DA	200 PCS
1175	40A	SE-CELDUC-40DA	200 PCS
1176	50A	SE-CELDUC-50DA	200 PCS
1177	60A	SE-CELDUC-60DA	200 PCS
1178	80A	SE-CELDUC-80DA	200 PCS
1179	100A	SE-CELDUC-100DA	200 PCS
SSR BLACK BODY			
1180	10A	SE-1D48-10A	200 PCS
1181	16A	SE-1D48-16A	200 PCS
1182	25A	SE-1D48-25A	200 PCS
1183	40A	SE-1D48-40A	200 PCS
1184	60A	SE-1D48-60A	50 PCS
1185	80A	SE-1D48-80A	50 PCS
1186	100A	SE-1D48-100A	50 PCS
1187	120A	SE-1D48-120A	50 PCS
SINGLE PHASE SINGLE ROW 3-32VDC INPUT 24-480VAC DA			
1188	100A	SE-H3100ZF	100 PCS
1189	120A	SE-H3 120ZF	100 PCS
1190	200A	SE-H3 200ZF	100 PCS
1191	300A	SE- H3 300ZF	100 PCS
1192	400A	SE-H3 400ZF	100 PCS
VOLTAGE REGULATOR			
1193	10VA	SE 10VA	200 PCS
1194	16VA	SE-16VA	200 PCS
1195	25VA	SE 25VA	200 PCS
1196	40VA	SE 40VA	200 PCS
BASE /HEAT SINK			
1197	SINGLE POLE	SE- SP	110 PCS
1198	TRIPLE POLE	SE-TP(L-150)	40 PCS
THYRISTOR SE-SKKT			
1199		SE-SKKT57/16	5 PCS
1200		SE-SKKT72/16	5 PCS
1201		SE-SKKT92/16	5 PCS
1202		SE-SKKT106/16	5 PCS
1203		SE-SKKT132/16	3 PCS
1204		SE-SKKT162/16	3 PCS
1205		SE-SKKT250/16	1 PCS
THYRISTOR SE-SKD			
1206		SE-SKKT30/16	12 PCS
1207		SE-SKKT50/16	12 PCS



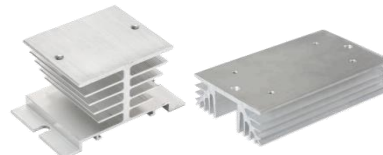
SSR BLUE BODY



SSR BLACK BODY



SINGLE ROW SOLID STATE RELAY



SINGLE/THREE PHASE SSR



THYRISTOR SKKT



THYRISTOR SKD

SOLENOID COIL WITH CE MARK

S.NO	PRODUCT DESCRIPTION	MODEL	CTN PACKING
1208	0.5 Kg	SE-1502	100 PCS
1209	1.0 Kg	SE-1602	50 PCS
1210	1.5 Kg	SE-2502	50 PCS
1211	2.0 Kg	SE-2602	50 PCS
1212	3.0 Kg	SE-3502	30 PCS
1213	4.0 Kg	SE-3602	30 PCS
1214	5.0 Kg	SE-3702	30 PCS
1215	6.0 Kg	SE-4502	10 PCS
1216	8.0 Kg	SE-4602	10 PCS
1217	10.0Kg	SE-SA52	10 PCS



SOLENOID COIL

WATER LEVEL FLOAT SWITCH WITH CE MARK

S.NO	PRODUCT DESCRIPTION	MODEL	CTN PACKING
1218	2 MTR		40 PCS
1219	3 MTR		40 PCS
1220	5 MTR		40 PCS
1221	10 MTR		20 PCS
SINICON FLOAT SWITCH - ORANGE COLOR			
1222	2 MTR - 3C x 1.25sqmm		40 PCS
1223	3 MTR - 3C x 1.25sqmm		40 PCS
1224	5 MTR - 3C x 1.25sqmm		40 PCS
1225	10 MTR - 3C x 1.25sqmm		20 PCS
SINICON FLOAT SWITCH - ORANGE COLOR			
1226	2 MTR - 3C x 0.88sqmm		40 PCS
1227	3 MTR - 3C x 0.88sqmm		40 PCS
1228	5 MTR - 3C x 0.88sqmm		40 PCS
1229	10 MTR - 3C x 0.88sqmm		20 PCS
METAL FLOAT SWITCH			
1230	40MM		100 PCS
1231	100MM		100 PCS
1232	150MM		100 PCS
1233	200MM		100 PCS
1234	300MM		100 PCS
1235	500MM		100 PCS



FLOAT SWITCH



SINICON TYPE FLOAT SWITCH



METAL FLOAT SWITCH

HAND LAMP WITH CE MARK

S.NO	PRODUCT DESCRIPTION	MODEL	CTN PACKING
HAND LAMP - PIN TYE/SCREW			
1236	5 Mtrs		30 PCS
1237	10 Mtrs		25 PCS
LED HAND LAMP			
1238	5 Mtrs - 220vac		100 PCS
1239	RECHARGABLE		100 PCS



HAND LAMP BULB TYPE



LED HAND LAMP

CRIMPING TOOLS WITH CE MARK

S.NO	PRODUCT DESCRIPTION	MODEL	CTN PACKING
1240	(0.08-6MM) FOR INSULATED	SE - WXC8 6-4	30 PCS
1241	(0.08-6MM) FOR INSULATED	SE-WXC8- 6-6	30 PCS
1242	(0.5-6MM) FOR INSULATED	SE - WX-06WF	30 PCS
1243	(6-16MM)FOR INSULATED	SE-WX-16WF	30 PCS
1244	(1-16MM)NON INSULATED	SE-WX-16	30 PCS
1245	(5.5-25MM)NON INSULATED	SE-WX-25	30 PCS
1246	(5.5-38MM) NON INSULATED	SE-WX-38	30 PCS
1247	(6-50MM) FOR LUGS	SE-HX-50B	30 PCS
1248	(10-120MM) FOR LUGS	SE-HX-120B	10 PCS
1249	(25-150MM) FOR LUGS	SE-HX-150B	10 PCS
1250	(70-240MM) FOR LUGS	SE - HX-240B	4 PCS
1251	(10-300MM) FOR LUGS	SE- YQK-300A	4 PCS
1252	(10-300MM) FOR LUGS	SE- YQK-300B	4 PCS
1253	(16-400MM)FOR LUGS	SE-WXY-400A	4 PCS
1254	(10-400MM)FOR LUGS	SE-WXY-400B	4 PCS
1255	(50-400MM)	SE-400HD	1 PCS
1256	(50-500MM)	SE-500HD	1 PCS
1257	MC4 TOOL 2.5/4/6 SQMM	SE-MC4	20 PCS
1258	MC4 TOOL ECONOMIC SERIES		40 PCS



SE-WXC8- 6-6



SE-WX-25



SE-HX 50/120/150B



SE-YQK 300 / 400



SE-MC4

AC DRIVE /MPCB/ELCB/MCCB WITH CE MARK

S.NO	PRODUCT DESCRIPTION	MODEL	CTN PACKING
1259	0.75 KW	1HP	12 PCS
1260	1.5 KW	2HP	12 PCS
1261	2.2 KW	3HP	12 PCS
1262	4KW	5HP	12 PCS
1263	5.5KW	7.5HP	12 PCS
1264	7.5KW	10HP	10 PCS
1265	11KW	14HP	2 PCS
1266	15KW	20HP	2 PCS
	Available Up to 355kw		
	MPCB		
1267	SMALL		50 PCS
1268	BIG		20 PCS
	ELCB		
1269	25/2/30mA		100 PCS
1270	40/2/30mA		100 PCS
1271	40/4/30mA		50 PCS
1272	63/4/30mA		50 PCS
1273	100/4/30mA		50 PCS
	MCCB		
1274	32A/63A/100A		12 PCS
1275	125A/160A		12 PCS
1276	200A/250A		12 PCS
1277	400A		12 PCS
1278	630A		12 PCS
1279	32A/63A/100A		12 PCS
1280	125A/160A		12 PCS
1281	200A/250A		12 PCS
1282	400A		12 PCS
1283	630A		12 PCS



AC DRIVE (ECO SERIES)



AC DRIVE



MPCB



ELCB

2 & 4 Pole 25 to 100 Amps



MCCB

CABLE DRUM WITH CE MARK

S.NO	PRODUCT DESCRIPTION	MODEL	WIRE/LENGTH	CTN PACKING
1284	16A 2PIN4 SOCKET INDIAN TYPE WITH ELCB	SE-8130/8150	1.5*2C - 25/50M	4 PCS
1285	16A 2PIN SOCO SOCKET 4 NOS	SE-8230/8250	1.5*2C - 25/50M	4 PCS
1286	16A 2PIN SOCO SOCKET 3 NOS WITH ELCB(PROVISION)	SE-8230AC/8250AC	1.5*2C - 25/50M	4 PCS
1287	16A 3PIN SOCKET 2 NOS	SE-8630/8650	2.5*4C(M)- 25/50	4 PCS
1288	16A3PIN SOCKET 2NOS(PVC)	SE-2630/2650	2.5*3C(P)- 25/50M	4 PCS
1289	32A4PIN SOCKET 2NOS	SE-8640/8660	2.5*4C(M)- 25/50	4 PCS
1290	16A 3 PIN SOCKET 3NOS+ 1 PLUG AND ELCB 1NOS	SE-CD-1		1 PCS
1291	32A 4/5 PIN SOCKET 3NOS+ 1 PLUG AND ELCB 1NOS	SE-CD-2		1 PCS
1292	16A 2PIN SOCKET 2NO,16A 3PIN SOCKET 1NO& IP67 &IP67 32A 5PIN SOCKET 2NOS + ELCB&MCB	SE-CD-3		1 PCS



SE-8130/50



SE-8640/60



SE-8630/50



SE-CD-1



SE-CD-3

SPRING RETURN CABLE REEL WITH CE MARK

S.NO	PRODUCT DESCRIPTION	MODEL	CTN PACKING
CABLE SIZE			
1293	2*1.0 12 MTS	SE:M:210	1 PCS
1294	2*1.5 12 MTS	SE:M:215	1 PCS
1295	2*2.5 10 MTS	SE:M:225	1 PCS
1296	3*1.0 12 MTS	SE:M:310	1 PCS
1297	3*1.5 10 MTS	SE:M:315	1 PCS
1298	3*2.5 10 MTS	SE:M:325	1 PCS
1299	4*1.5 10 MTS	SE:M:415	1 PCS
1300	4*2.5 10 MTS	SE:M:425	
CABLE SIZE			
1301	2*1.0 5 MTS	SE:S:210	1 PCS
1302	2*1.5 4 MTS	SE:S:215	1 PCS
1303	3*1.0 5 MTS	SE:S:310	1 PCS
1304	3*1.5 4 MTS	SE:S:315	1 PCS
1305	3*2.5 30METERS(LOCKABLE&UNLOCKABLE)	SE-325	1 PCS
1306	4*2.5 30METERS(LOCKABLE&UNLOCKABLE)	SE-425	1 PCS



SPRING RETURN CABLE REEL 10 METERS



SPRING RETURN CABLE REE LUPTO 30 METERS

TEMPERATURE CONTROLLER WITH CE MARK

S.NO	PRODUCT DESCRIPTION	MODEL	CTN PACKING
1307	48*48 (C100)	SE-48*48 C100	100 PCS
1308	48*48 (C 100)PID	SE-48*48 PID	100 PCS
1309	72*72 (C700)	SE-72*72 C700	50 PCS
1310	72*72 (C 700 PID)	SE-72*72 PID	50 PCS
1311	96*96 (C900)	SE-96*96 C900	40 PCS
1312	96*96 (C 900 PID)	SE-96*96 PID	40 PCS
1313	96*48 (C 400)	SE-96*48 C400	40 PCS
1314	96*48 (C 400 PID)	SE-96*48 C400	40 PCS
1315	MULTI FUNCTION METER WITH CE MARK	SE-96*96	50 PCS



96*48/96*96/72*72/48*48



MULTI FUNCTION METER

HRC NGT FUSE WITH CE MARK

S.NO	PRODUCT DESCRIPTION	MODEL	CTN PACKING
SIZE-NGT 000			
1316	63A	SE-000 63	45 PCS
1317	100A	SE-000 100	45 PCS
1318	125A	SE-000 125	45 PCS
1319	160A	SE-000 160	45 PCS
SIZE-NGT 00			
1320	63A	SE-00 63	45 PCS
1321	100A	SE-00 100	45 PCS
1322	125A	SE-00 125	45 PCS
1323	160A	SE-00 160	45 PCS
SIZE-NGT 1			
1324	200A	SE-1 - 200	20 PCS
1325	250A	SE-1 - 250	40 PCS
SIZE-NGT 2			
1326	300A	SE-2 - 300	10 PCS
1327	400A	SE-2 - 400	30 PCS
SIZE-NGT 3			
1328	500A	SE-3 - 500	10 PCS
1329	630A	SE-3 - 630	20 PCS



PLUG & SOCKET ENCLOSURE WITH CE MARK			
S.NO	PRODUCT DESCRIPTION	MODEL	CTN PACKING
1330	IP67 3 PIN	SE-880A	1 PCS
1331	IP67 5 PIN	SE-880A	1 PCS
1332	IP44 3 PIN	SE-881A	1 PCS
1333	IP44 5 PIN	SE-881A	1 PCS
1334	(IP67) 3 PIN	SE-882A	1 PCS
1335	(IP67) 5 PIN	SE-882A	1 PCS
1336	(IP67), (IP55) 3 PIN	SE-883A	1 PCS
1337	(IP67) 3 PIN	SE-884A	1 PCS
1338	(IP67), (IP44) 3 PIN	SE-885A	1 PCS
1339	(IP67), (IP44) 3 PIN	SE-886A	1 PCS
1340	(IP55) 3 PIN	SE-887A	1 PCS
1341	(IP55) 3 PIN	SE-888A	1 PCS
1342	(IP67) 3 PIN	SE-889A	1 PCS
1343	(IP67), (IP55) 3 PIN	SE-890A	1 PCS
1344	(IP67), (IP55) 3 PIN	SE-881A	1 PCS
1345	(IP67) 3 PIN	SE-882A	1 PCS
1346	(IP55) 3 PIN	SE-883A	1 PCS
1347	(IP44),(IP67) 3 PIN	SE-884A	1 PCS
1348	16A 2PIN(IP44)	SE-212	1 PCS
1349	16A 3PIN(IP44)	SE-213	1 PCS
1350	16A 2PIN(IP44) 16A 3PIN(IP44)	SE-1213	1 PCS
1351	16A 2PIN(IP44) 32A 5PIN(IP44)	SE-1225	1 PCS
1352	32A 5PIN(IP44)	SE-125	1 PCS
1353	16A 3PIN(IP44) 32A 5PIN(IP44)	SE-1325	1 PCS
1354	16A 2PIN(IP44) 16A 3PIN(IP44) 32A 5PIN	SE-121325	1 PCS
1355	EMPTY ENCLOSURE BOX		1 PCS
1356	16A 3/5PIN OR 32A 3/5PIN		1 PCS
1357	63/125A 5PIN OR (2NOS 16A 3PIN OR 32A 5PIN)		1 PCS
INTERLOCK SWITCH			
1358	(IP 44) 16A 3 PIN	SE-895A	1 PCS
1359	(IP 44) 32A 3 PIN	SE-895A	1 PCS
1360	(IP44) 16A 4 PIN	SE-895A	1 PCS
1361	(IP44) 32A 4 PN	SE-895A	1 PCS
1362	(IP 44) 16A 5 PIN	SE-895A	1 PCS
1363	(IP 44) 32A 5 PIN	SE-895A	1 PCS
1364	(IP67) 16A 3 PIN	SE-13132	1 PCS
1365	(IP67) 16A 4 PIN	SE-13142	1 PCS
1366	(IP67) 16A 5 PIN	SE-13152	1 PCS
1367	(IP67) 32A 3 PIN	SE-13232	1 PCS
1368	(IP67) 32A 4 PIN	SE-13242	1 PCS
1369	(IP67) 32A 5 PIN	SE-13252	1 PCS
LOAD BREAK ISOLATOR SWITCH			
1370	25A (IP55) 3 POLE		1 PCS
1371	25A (IP65) 4 POLE		1 PCS
1372	32A (IP55) 3 POLE		1 PCS
1373	32A (IP65) 4 POLE		1 PCS
1374	40A (IP55) 3 POLE		1 PCS
1375	40A (IP65) 4 POLE		1 PCS
1376	63A (IP55) 3 POLE		1 PCS
1377	63A (IP65) 4 POLE		1 PCS
1378	100A (IP55) 3 POLE		1 PCS
1379	100A (IP65) 4 POLE		1 PCS
SPARE WINDOW WITH CLAMP			
1380	2 WAY		
1381	3 WAY		
1382	4 WAY		
1383	6 WAY		
1384	8 WAY		
1385	12 WAY		
1386	13 WAY		



SE-1213 SE-213 SE-125



INTERLOCK SWITCH



ISOLATOR SWITCH



SPARE WINDOW WITH CLAMP

INFRARED MOTION SENSOR WITH CE MARK



SE-ES-P19A



SE-ES-P06



S.NO	PRODUCT DESCRIPTION	MODEL	CTN PACKING
1387	SE-ES-P19A	SE-ES-P19A	50
1388	SE-ES-P06	SE-ES-P06	50

SURGE PROTECTION DEVICES (SPD) WITH CE MARK



SPD (AC & DC) 2POLE,3POLE,4POLE

S.NO	PRODUCT DESCRIPTION	MODEL	CTN PACKING
1389	AC 2 POLE	SE-C40	100 PCS
1390	AC 4 POLE	SE-C40	50 PCS
1391	DC 2 POLE	SE-PV-1000	100 PCS
1392	DC 3 POLE	SE-PV-1000	50 PCS

CABLE DRAG CHAINS WITH CE MARK

S.NO	IH*	IW*	OH*	OW*	BENDING RADIUS
OPEN TYEP WITH END CLAMPS					
1393	15	20	19.5	28	R28
1394	18	25	24.5	37	R28
1395	18	37	23.5	49.5	R28
1396	25	38	36	52	R55
1397	25	57	36	71	R55
1398	35	75	56	94.5	R75
1399	35	100	56	119	R75
1400	35	125	56	144	R75
1401	45	125	56	154	R100
1402	45	150	56	179	R100
1403	55	75	77	99	R100
1404	60	150	88	188	R150
1405	60	200	88	238	R150
CLOSED TYPE WITH END CLAMPS					
1406	25	38	36	52	R75
1407	25	57	36	71	R75



OPEN TYPE



CLOSED TYPE

- *IH** INNER HEIGHT
- *IW** INNER WIDTH
- *OH** OUTER HEIGHT
- *OW** OUTER WIDTH