

TEKNIC



ENCLOSURES & ENCLOSING SOLUTIONS

• Automation • Escalators / Elevators • Project Applications



Enclosures for Customer Assembly

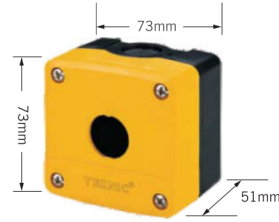
These Enclosures are for assembly by the user and can be mounted with the metallic or plastic series push buttons (please refer to the relevant catalogues for the range)

Degree of protection: IP 65, NEMA4X, 12
 Standards: IEC 60529, UL50
 Cable Entries: knock outs on plastic
 tapped holes on Aluminium

Colours:
 a) Plastic
 b) Aluminium

Yellow / Black, White / Black, Grey / Grey
 Yellow / Black, Grey / Black, Grey / Grey

Empty Enclosures ABS / Polycarbonate



Assembly of Actuators and Contact Elements

Non illuminated push buttons with 3 contact elements
 Illuminated push buttons with 2 contact elements



Empty Enclosures Aluminium (52mm depth)

Assembly of Actuators and Contact Elements

Non illuminated push buttons with 3 contact elements
 Illuminated push buttons with 2 contact elements



Empty Enclosures Aluminium (70mm depth)

Assembly of Actuators and Contact Elements

Non illuminated push buttons with 6 contact elements
 Illuminated push buttons with 4 contact elements



**MRP FOR CONTROL STATIONS IN ALUMINIUM HOUSING
EFFECTIVE FROM 20.10.2021
CONTROL STATIONS IN ALUMINIUM HOUSING**

1 WAY CONTROL STATION



COLOUR	PART NO.	ENCLOSURE SIZE	MRP PER UNIT	MOQ
Grey Cover / Black Housing	2005A13	80 mm x 90 mm x 52 mm	585.00	50 nos.
Yellow Cover / Black Housing	2005A10	80 mm X 90 mm X 52 mm	585.00	50 nos.

2 WAY CONTROL STATION



Grey Cover / Black Housing	2006C13	80 mm x 135 mm x 52 mm	675.00	50 nos.
Yellow Cover / Black Housing	2017C10	80 mm X 135 mm X 52 mm	675.00	50 nos.

3 WAY CONTROL STATION



Grey Cover / Black Housing	2007E13	80 mm x 180 mm x 52 mm	775.00	25 nos.
Yellow Cover / Black Housing	2014E10	80 mm X 180 mm X 52 mm	775.00	25 nos.

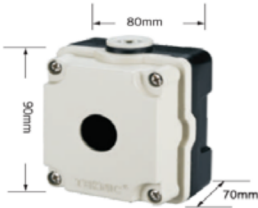
4 WAY CONTROL STATION



Grey Cover / Black Housing	2010G13	80 mm X 225 mm X 52 mm	885.00	25 nos.
Yellow Cover / Black Housing	2011G10	80 mm X 225 mm X 52 mm	885.00	25 nos.

**MRP FOR CONTROL STATIONS IN ALUMINIUM HOUSING
EFFECTIVE FROM 20.10.2021
CONTROL STATIONS IN ALUMINIUM HOUSING**

1 WAY CONTROL STATION



COLOUR	PART NO.	ENCLOSURE SIZE	MRP PER UNIT	MOQ
Grey Cover / Black Housing	7001A13	80 mm X 90 mm X 70 mm	730.00	50 nos.
Yellow Cover / Black Housing	7002A10	80 mm X 90 mm X 70 mm	730.00	50 nos.

2 WAY CONTROL STATION



Grey Cover / Black Housing	7001C13	80 mm X 135 mm X 70 mm	800.00	50 nos.
Yellow Cover / Black Housing	7002C10	80 mm X 135 mm X 70 mm	800.00	50 nos.

3 WAY CONTROL STATION



Grey Cover / Black Housing	7001E13	80 mm X 180 mm X 70 mm	1095.00	25 nos.
Yellow Cover / Black Housing	7002E10	80 mm X 180 mm X 70 mm	1095.00	25 nos.

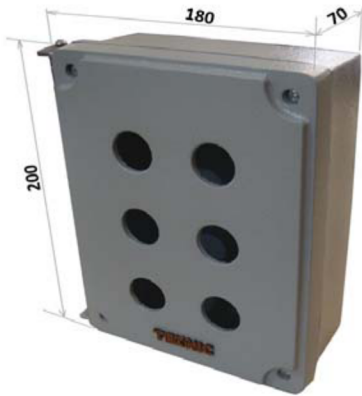
4 WAY CONTROL STATION



Grey Cover / Black Housing	7001G13	80 mm X 225 mm X 70 mm	1160.00	25 nos.
Yellow Cover / Black Housing	7002G10	80 mm X 225 mm X 70 mm	1160.00	25 nos.

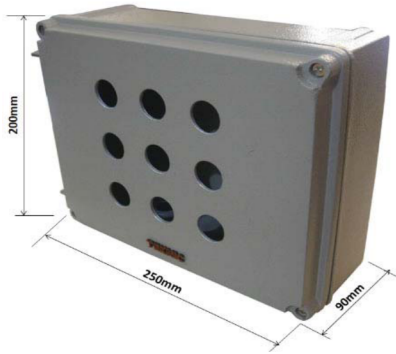
**MRP FOR CONTROL STATIONS IN ALUMINIUM HOUSING
EFFECTIVE FROM 20.10.2021
CONTROL STATIONS IN ALUMINIUM HOUSING**

6 WAY CONTROL STATION



COLOUR	PART NO.	ENCLOSURE SIZE	MRP PER UNIT	MOQ
Grey Cover / Grey Housing	2010J14	180mm x 200mm x 70 mm	2,095.00	10 nos.

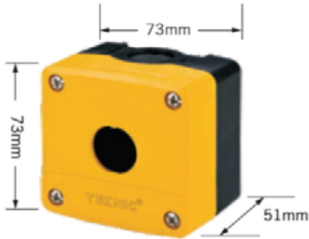
9 WAY CONTROL STATION



Grey Cover / Grey Housing		250mm x 200mm x 90 mm	3,115.00	10 nos.
---------------------------	--	-----------------------	----------	---------

**MRP FOR CONTROL STATIONS IN PLASTIC HOUSING (ABS)
EFFECTIVE FROM 20.10.2021
CONTROL STATIONS IN PLASTIC HOUSING**

1 WAY CONTROL STATION



COLOUR	PART NO.	ENCLOSURE SIZE	MRP PER UNIT	MOQ
White cover / Black housing	4005A11	73 mm X 73 mm X 51 mm	255.00	50 nos.
Yellow cover / Black housing	4006A10	73 mm X 73 mm X 51 mm	255.00	50 nos.

2 WAY CONTROL STATION






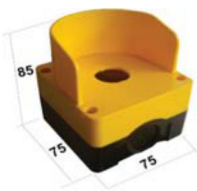
White cover / Black housing	4005C11	73 mm X 113 mm X 51 mm	380.00	50 nos.
Yellow cover / Black housing	4006C10	73 mm X 113 mm X 51 mm	380.00	50 nos.

3 WAY CONTROL STATION



White cover / Black housing	4005E11	73 mm X 153 mm X 51 mm	595.00	25 nos.
Yellow cover / Black housing	4006E10	73 mm X 153 mm X 51 mm	595.00	25 nos.

**MRP FOR CONTROL STATIONS IN PLASTIC HOUSING (ABS)
EFFECTIVE FROM 20.10.2021
CONTROL STATIONS IN PLASTIC HOUSING**

4 WAY CONTROL STATION					
	COLOUR	PART NO.	ENCLOSURE SIZE	MRP PER UNIT	MOQ
	White cover / Black housing	4005G11	73 mm X 193 mm X 51 mm	650.00	25 nos.
	Yellow cover / Black housing	4006G10	73 mm X 193 mm X 51 mm	650.00	25 nos.
5 WAY CONTROL STATION					
	White cover / Black housing	4005S11	73 mm X 233 mm X 51 mm	735.00	25 nos.
	Yellow cover / Black housing	4006S10	73 mm X 233 mm X 51 mm	735.00	25 nos.
6 WAY CONTROL STATION					
	White cover / Black housing	4005I11	73 mm X 273 mm X 51 mm	795.00	25 nos.
	Yellow cover / Black housing	4006I10	73 mm X 273 mm X 51 mm	795.00	25 nos.
1 WAY PLASTIC CONTROL STATIONS WITH YELLOW COVER / BLACK HOUSING WITH INTEGRAL CANOPY					
	Yellow cover / Black housing	6018A10	75 mm X 75 mm X 85 mm	370.00	25 nos.



GENERAL TERMS AND CONDITIONS

PRICES : Prices are ex-works Mumbai
HSN CODE : 85371000
TAXES : GST 18%

Prices are subject to revision without notice and ruling at the time of delivery.

This price list supersedes all previous Price Lists.

Warranty Policy : TEKNIC equipment is guaranteed under the following terms:

For a period of 12 months from the date of sale, TEKNIC guarantees that its products are free from defects in material and workmanship, with the exception of consumables rendered unserviceable through normal use. During the said period, TEKNIC will replace or repair all parts acknowledged as defective due to factory workmanship and which have been returned in a timely manner by Buyer to TEKNIC and all costs and duties paid, together with a detailed description of the failure and a certified declaration of the number of hours of operation. Repaired or replaced parts will be redelivered FCA (named place) as per INCOTERMS 2000. This warranty is subject to the provision of correct usage, proper maintenance and does not cover defects arising out of fire, faulty operation, accident, inefficient maintenance and willful or accidental damage.

TEKNIC guarantee applies to all equipment, parts and components stored, installed, protected, maintained and used in accordance with TEKNIC specifications and instructions, and respecting the rules for normal use, without any modification by Buyer.

All other conditions or warranties, whether express or implied, relating to the quality and operation of the equipment are excluded, as well as any liability for loss or damage caused directly or indirectly by the equipment or resulting from its use.

Proof of purchase to be provided to avail warranty.

TEKNIC ELECTRIC (I) PVT. LTD.

Head Office : 703/704/705, Madhava, Bandra Kurla Complex, Bandra (E), Mumbai – 400051. Tel : +91-22-42532500
Works : 65, Marol Co-op. Industrial Estate Ltd., M. Vassanji Road, Andheri (East), Mumbai – 400059. Tel : +91-22-42534500
Email : teknice@teknice.co.in mfg@teknice.co.in Website : www.teknice.co.in

CH:MT:27
REV:F